




Dell Pair

User's Guide



Notes, Cautions, and Warnings

-  **NOTE:** A NOTE indicates important information that helps you make better use of your computer.
-  **CAUTION:** A CAUTION indicates potential damage to hardware or loss of data if instructions are not followed.
-  **WARNING:** A WARNING indicates a potential for property damage, personal injury, or death.

Copyright © 2022-2024 Dell Inc. or its subsidiaries. All rights reserved. Dell, EMC, and other trademarks are trademarks of Dell Inc. or its subsidiaries. Other trademarks may be trademarks of their respective owners.

2024-07
Rev. A07

Contents

Overview	4
Supportability	5
Download and installation.	6
User interface.....	8
General Features	9
Accessibility.....	11
Troubleshoot.....	12



Overview

Dell Pair supports the following:

- Detect Dell peripheral devices like mouse and keyboard when they are within detection range to pair via Bluetooth.
- Seamlessly pair devices through Bluetooth.



NOTE: Dell Pair user guide is common to all supported Dell peripherals. For features specific to the device, please refer to the product user guide.



Supportability

Dell Pair comes pre-installed on the following Dell Systems. If you uninstall Dell Pair manually and would like to re-install it again, please follow the instructions mentioned in [Download and installation](#) section of this user guide. Dell Pair is supported on Dell PC with BLE 5.0 configuration and BLE supported Dell Peripherals.

Supported Platforms:

URL [Link](#) to supported platforms:

Supported Peripherals:

Dell Bluetooth Travel Mouse – MS700
Dell Premier Rechargeable Mouse – MS900
Dell Premier Collaboration Keyboard – KB900
Dell Premier Collaboration Keyboard and Mouse– KM900
Dell Wireless Headset – WL3024
Dell Pro Wireless ANC Headset – WL5024
Dell Premier Wireless Adaptive ANC Headset – WL7024
Dell Silent Keyboard - KB555
Dell Silent Mouse - MS355
Dell Silent Keyboard and Mouse - KM555.

Supported OS:

Windows 10, Build version 10.0.19041 and above.
Windows 11



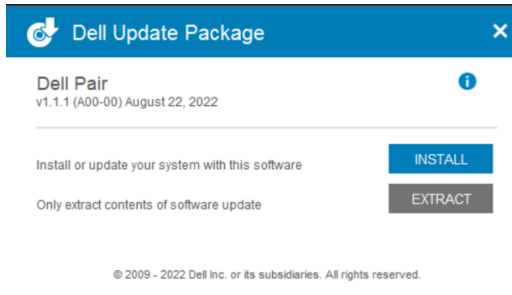
Download and installation.

Dell Pair comes pre-installed on your Dell System. All supporting documents for Dell Pair can be found in [Support for Dell Pair | Documentation | Dell US](#).

To manually download and install, please go to Drivers & Downloads page in [Support for Dell Pair | Drivers & Downloads | Dell US](#)

Installation:

Please follow the installation steps as prompted in the installation screen.



After Installation, 'Dell Pair' can be seen in Windows start menu.

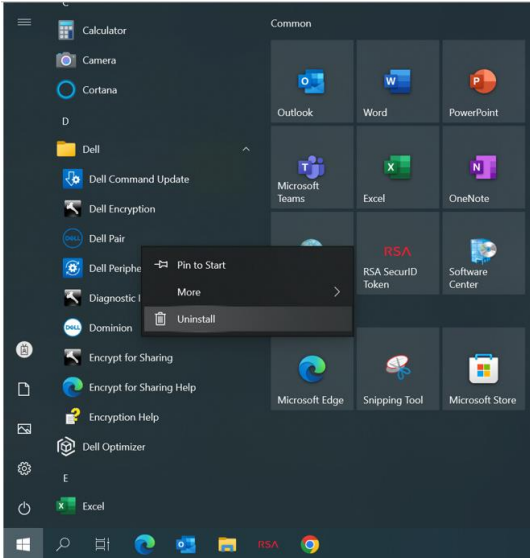
Command line installation:

- Open command prompt
- In command prompt, point to the directory where Dell Pair executable has been downloaded.
- Type the command for installation: DellPair-Setup-x64.exe.
- If installation is required to run silently type the command: DellPair-Setup-x64.exe /S
- To run installer with logging feature, type the command:
 - DellPair-Setup-x64.exe /S /vLOGFILE=" <Full_path_with_Filename>"



Uninstallation:

To uninstall, go to windows start menu and navigate to folder 'Dell'. Select uninstall of Dell Pair after right clicking on it and follow the prompts.



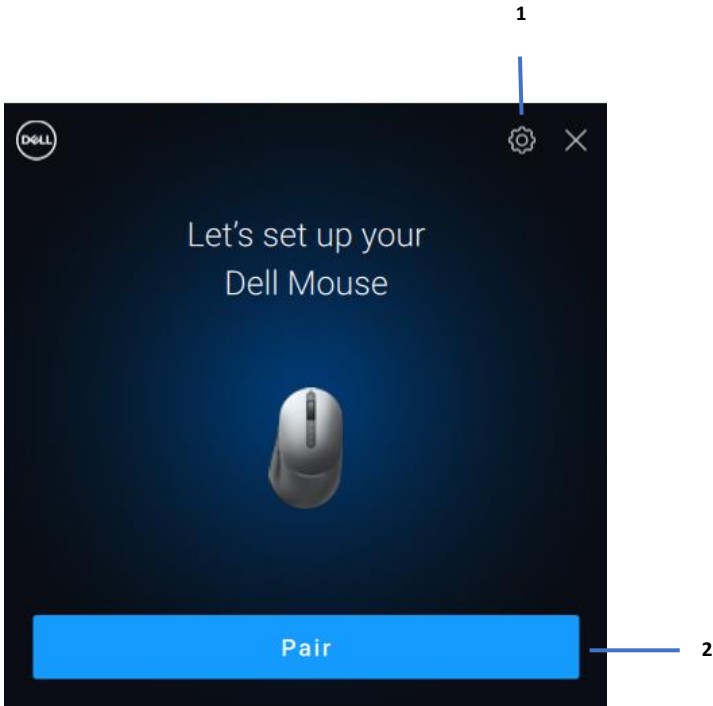
Command line uninstallation:

- Open command prompt
- In command prompt, point to the directory where Dell Pair executable has been Installed.
- Type the command for uninstallation:
 - `C:\Program Files\Dell\Dell Pair\Uninstall.exe`
- If uninstallation is required to run silently type the command:
 - `C:\Program Files\Dell\Dell Pair\Uninstall.exe /S`



User interface

When a device (Mouse, Keyboard etc.) that supports Dell Pair is turned on and brought near the Bluetooth detection range of PC, Dell Pair pops up a notification. It prompts user to connect the device with PC. On clicking 'Pair', the device is seamlessly paired with PC using Bluetooth.

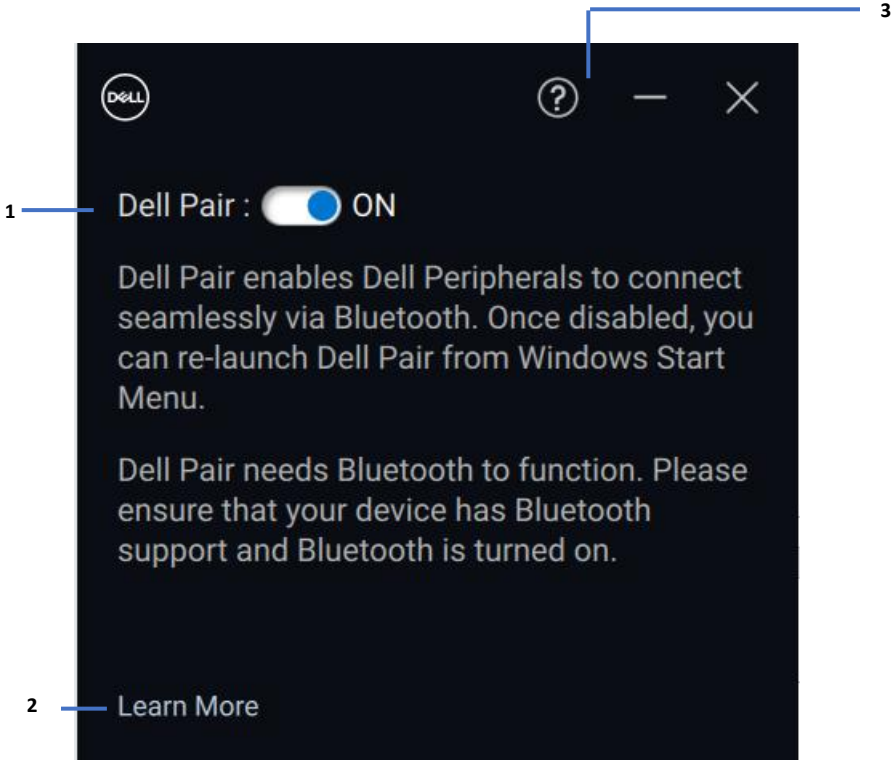


- 1 Dell Pair Settings
- 2 Start Pairing using Bluetooth



General Features

You can click **Start Menu > Dell > Dell Pair** to open the user interface to change Dell Pair setting. You can enable or disable Dell Pair feature from the user interface by sliding the switch to “ON” or “OFF” position.



- 1 Dell Pair ON/OFF Switch
- 2 Learn More
- 3 Software version information



Discover: The Dell Peripheral Manager application helps you personalize various Dell Peripherals connected to your computer. To know more about this software, the models that it supports and to download it, please visit www.dell.com/support/dpem.



Accessibility

Narrator

The app supports Narrator that lets you read and interact with app controls on the screen, like text and buttons, without a mouse.

- Press the Windows logo key + Ctrl + Enter together to start Narrator. Press these keys again to stop Narrator.
- You can also press the Windows logo key + Ctrl + N to open Narrator settings, and then turn on the toggle under Use Narrator.

Keyboard Navigation

The app supports keyboard accessibility. All controls can be accessed via Tab key. To select/invoke a control, press Spacebar key.

Scan Mode

You can navigate through the app using Up and Down arrow keys. To turn scan mode on and off, press Narrator + Spacebar.



NOTE: The Narrator key is a modifier key in the Narrator commands. Both the Caps lock key and the Insert key serve as your Narrator key by default.



Troubleshoot

If Dell Pair notification does not pop up when a device is turned on for the first time, then please check for the possible causes as mentioned below:

Problems	Possible solutions
Dell Pair notification does not open when a Bluetooth device is turned on for the first time	<ul style="list-style-type: none">• Windows 10 (version 19041) is the oldest version to support Dell Pair• Bluetooth version 5.0 or higher is present• Bluetooth is supported on the computer. It is turned ON under Windows settings• The Bluetooth device supports detection by Dell Pair• The Bluetooth device is placed close to the detection range of the computer. If peripheral being connected is mouse/keyboard, lift the device and bring this closer to PC.• Check the computer and the Bluetooth device both have sufficient battery charge to operate• The Bluetooth device has the latest firmware• The Bluetooth controller on the computer is from Intel• Power cycle the Bluetooth device
Dell Pair reports a pairing error	Proceed to reconnect via Dell Pair with following steps:



- | | |
|--|-------------------------------------------------------------------------------------------------------------------------------------------------------------------------------------------------------------------------------------------------------------------------------------------------------------------------------------------------------------------------------------------------------------------------------------------------------------------------------------------------------------------------|
| | <ol style="list-style-type: none">1. If Bluetooth device is<ol style="list-style-type: none">a. brought near PC andb. is in pairing modec. the Dell Pair UI aids pairing.2. Wait for pairing error window to auto-dismiss3. Move the Bluetooth device far away from the computer4. Bring the Bluetooth device closer to the computer slowly5. Ensure that the Bluetooth device is in pairing mode and the pairing LED starts blinking |
|--|-------------------------------------------------------------------------------------------------------------------------------------------------------------------------------------------------------------------------------------------------------------------------------------------------------------------------------------------------------------------------------------------------------------------------------------------------------------------------------------------------------------------------|

