

Dell Peripheral Manager

User's Guide



Notes, Cautions, and Warnings



NOTE: A NOTE indicates important information that helps you make better use of your computer.



CAUTION: A CAUTION indicates potential damage to hardware or loss of data if instructions are not followed.



WARNING: A WARNING indicates a potential for property damage, personal injury, or death.

Contents

Overview	6
OS Compatibility	6
Download and Installation	7
User interface	8
Keyboard and mouse features	10
<i>Device Status</i>	10
<i>Mouse settings</i>	10
<i>Application Specific settings</i>	11
<i>Keyboard settings</i>	12
<i>Activating collaboration touchpad/keys for Microsoft Teams</i>	13
<i>Illumination Settings</i>	14
<i>Assignable Actions</i>	14
<i>Pairing a device</i>	17
<i>Unpairing a device</i>	18
Webcam features	20
<i>First-time Walkthrough</i>	20
<i>Camera Feed/Presets</i>	21
<i>Configuring Your Webcam</i>	22
Camera Control	22
Color and Image	23
Presence Detection	24



Capture.....	25
Audio	26
<i>Quick Access Menu</i>	27
<i>FAQ related to webcam</i>	27
Speakerphone and soundbar features.....	30
<i>Speaker Preset</i>	30
<i>Audio Settings</i>	30
<i>Sounds & Notifications</i>	31
<i>Additional Information</i>	31
Pen features.....	33
<i>Pairing</i>	33
<i>Tip/Tilt Sensitivity</i>	34
<i>Barrel Buttons</i>	35
<i>Radial Menu</i>	36
Headset features	37
<i>Audio Settings</i>	37
Active Noise Cancellation	37
Collaboration.....	38
Multimedia	38
<i>Automated Actions</i>	39
Wear Detection	39
<i>Device Settings</i>	40
<i>Download Dell Audio</i>	42
<i>Additional Information</i>	42
Accessibility.....	43
<i>Narrator</i>	43



<i>Keyboard Navigation</i>	43
<i>Scan Mode</i>	43
Software updates	44



Overview

Dell Peripheral Manager supports the following:

- Pair/unpair devices through RF or Bluetooth, LE Audio.
- Assign shortcuts to customizable action buttons.
- View device information, such as firmware version and battery status.
- Configure webcam and use its features.
- Configure speaker phones and pens.
- Configure headset settings.
- Upgrade software and device(s) firmware



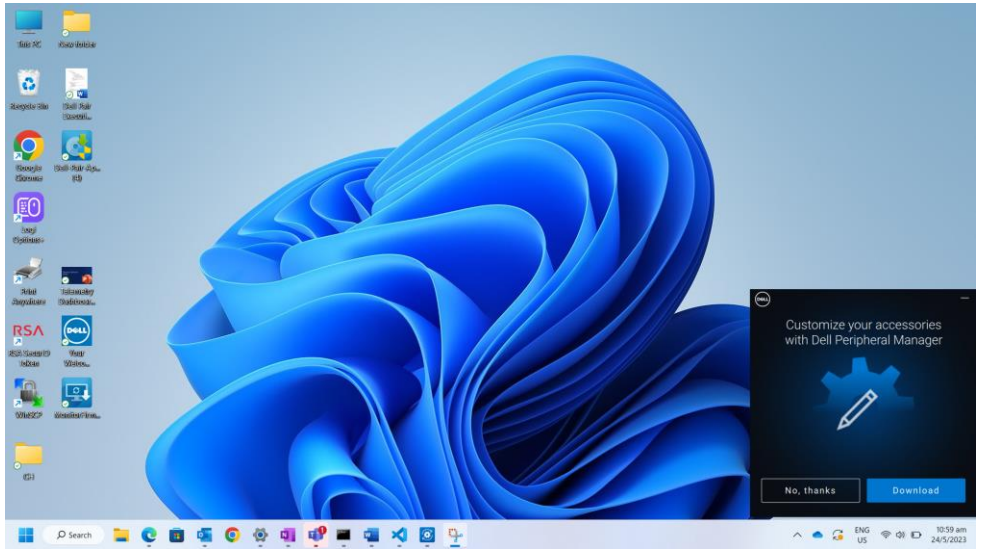
NOTE: Dell Peripheral Manager user guide is common to all supported Dell peripherals. For features specific to the device, please refer to the product user guide.

OS Compatibility

Dell Peripheral Manager is compatible with Windows 10 (64-bit) and higher. ARM-based Dell computers (except Inspiron 14 3420) are also supported by Dell Peripheral Manager from version 1.7.5 onwards. Non-Dell ARM-based computers are not supported.



Download and Installation



When you connect the device/peripheral to your computer for the first time, installer prompt is displayed, and you can choose to download Dell Peripheral Manager or to decline the installation.



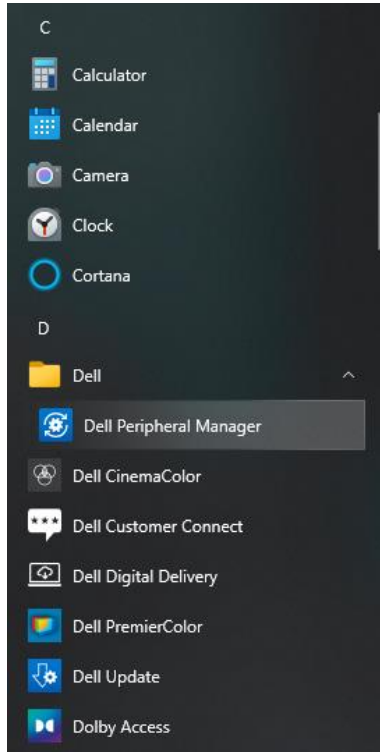
NOTE: If Dell Peripheral Manager does not appear within a few minutes, you can:

- check for updates manually via Windows Update, or
- download the Dell Peripheral Manager application from <https://www.dell.com/support/dpem>.



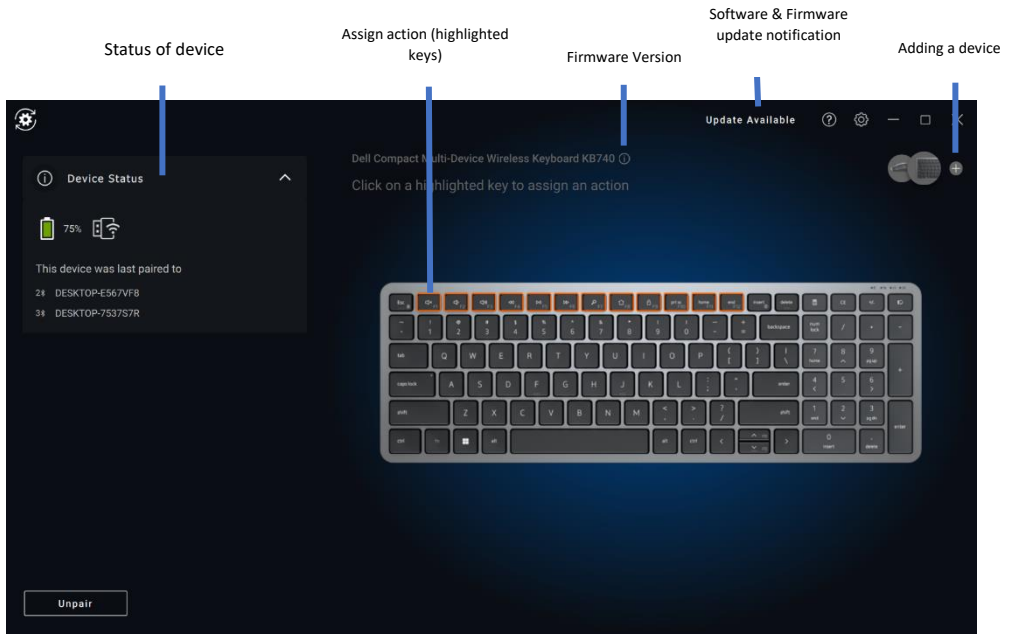
User interface

Dell Peripheral Manager opens automatically when the device is connected to an active USB port on your computer for the first time. You can also click **Start Menu > Dell > Dell Peripheral Manager** to open the user interface.



The Dell Universal USB receiver that is shipped with the wireless device is pre-paired for use with it. You can access the device in the Dell Peripheral Manager window after connecting the USB receiver to an active USB port on your computer.





Unpairing a device

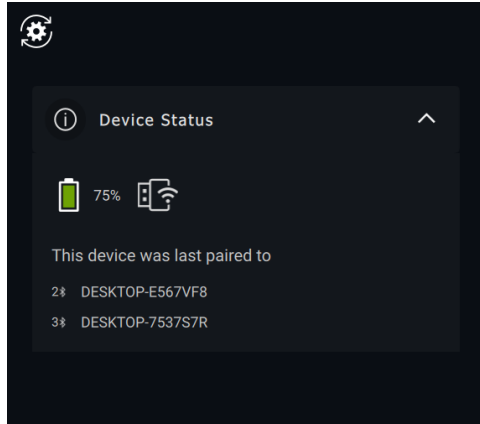


Keyboard and mouse features

Device Status

You can view the following details on the **Device Status**:

- Battery life Indicator
- Connectivity Indicators
- Bluetooth pairing history

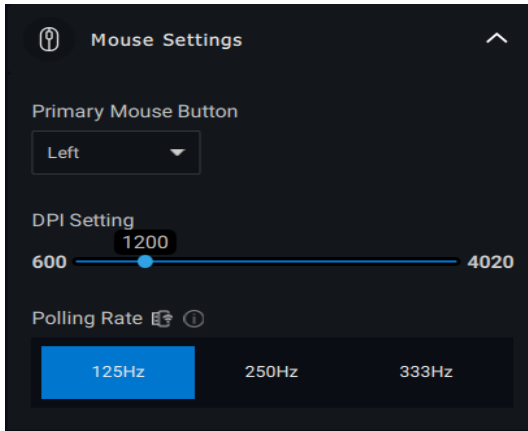


NOTE: You can move the pointer over the RF connectivity indicator to view the USB receiver version.

Mouse settings

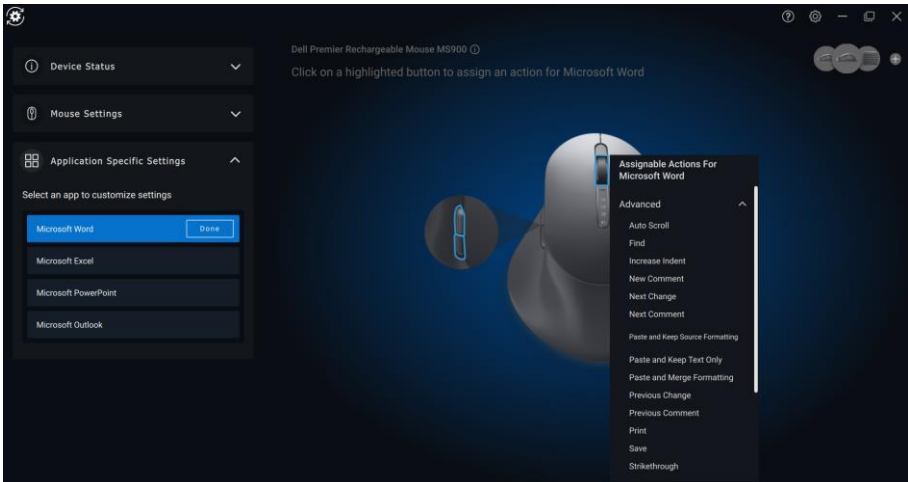
You can expand Mouse settings in the device panel to view or change DPI and Primary Mouse Button settings. Some mouse models have Polling Rate and touch scroll sensitivity adjustment settings to adjust the scroll speed by dragging on the slider.





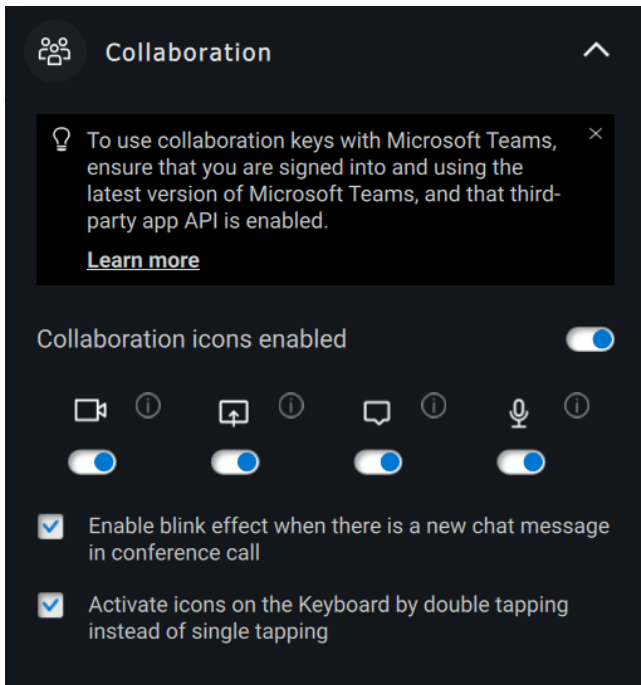
Application Specific settings

You can expand Application Specific Settings in the device panel to select an application to configure the settings. Once selected, you can assign custom actions to applications (for e.g., Microsoft Word, Microsoft Excel, or Microsoft PowerPoint) based on the highlighted button within your mouse.



Keyboard settings

Some high-end keyboard models come with special collaboration touchpad/keys to control Zoom or Microsoft Teams meetings. These keys will light up when Zoom or Microsoft Teams meetings are started and the setting collaboration icons are enabled on the application. Using these buttons, it is possible to toggle video on and off, audio on and off, show chat window and share screen in an active meeting. It is possible to turn the individual feature on or off in the application to get granular control. Enabling the double tap will require user to double tap/keypress on the collaboration touchpad/keys to control the individual Zoom or Microsoft Teams feature.



NOTE: Microsoft Teams touch controls only work with 'Teams for work or school' windows desktop application - version 1.6.00.24078 and above. Collaboration touch control options are not available in Teams for home, Teams on web, slim core version, Teams personal account/free version.





NOTE: Collaboration touch control options work with Zoom MSI installer & Zoom desktop version 5.9.3 and above. Touch control options are not available in Zoom web version.

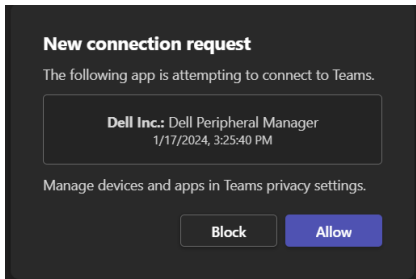


NOTE: If Zoom and Teams are not installed on your system, the collaboration touch controls do not function.

Activating collaboration touchpad/keys for Microsoft Teams

To activate these controls for Teams meeting, do the following:

1. Enable the third-party app API on Teams.
 - a) Open Teams app and click the icon at the upper right.
 - b) Click **Settings**. The settings menu is displayed.
 - c) Click **Privacy**. The privacy settings menu is displayed.
 - d) Scroll down and click **Manage API** under **Third-party app API**. The Third-party app API screen is displayed.
 - a) Slide the switch to the right side on **Enable API**. The third-party app API gets enabled.
 - f) Close the window.
2. Join a Teams meeting. A New connection request screen is displayed.



3. Click Allow.

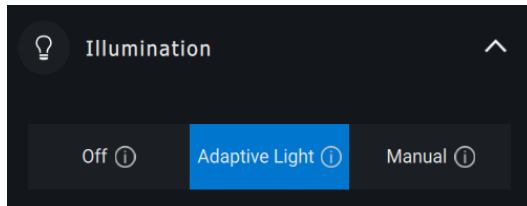


4. Collaboration touchpad/keys will illuminate and remain active during the conference session.

Illumination Settings

These keyboards also have special illumination settings that can be adjusted under the illumination section to control the backlight brightness on the keyboard. You can set one of the following settings for the illumination. With adaptive lighting the keyboard brightness is controlled by ambient sensor based on ambient lighting.

- Off
- Adaptive Light
- Manual

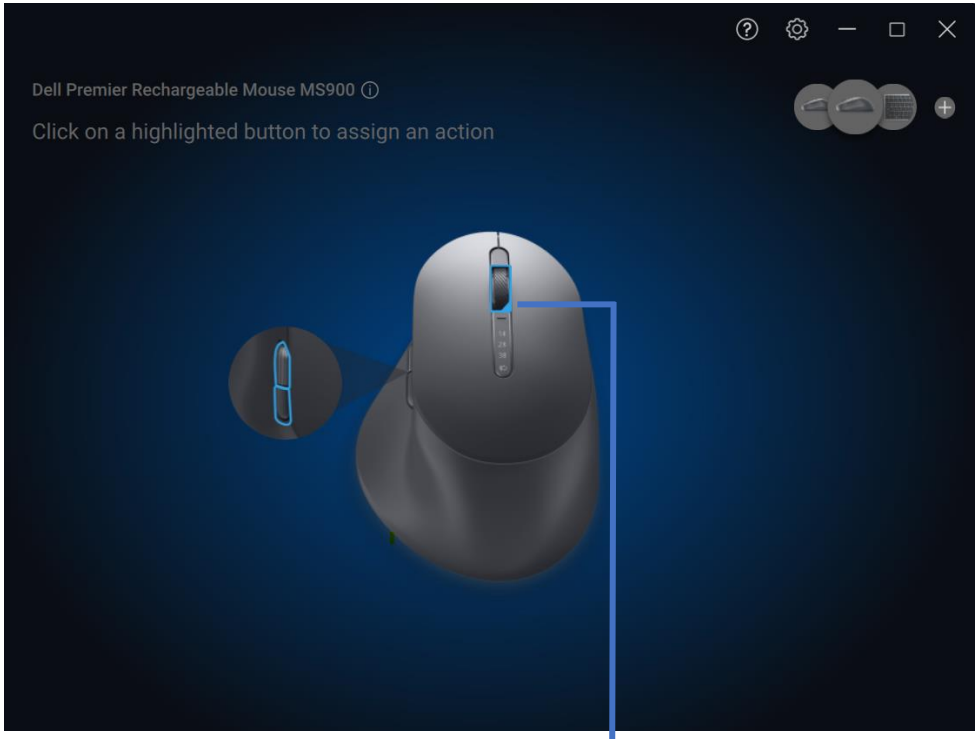


With manual lighting, the keyboard backlight brightness can be controlled using the slider or by pressing the F8 key.

Assignable Actions

Programmable actions can be assigned to highlighted buttons or keys.



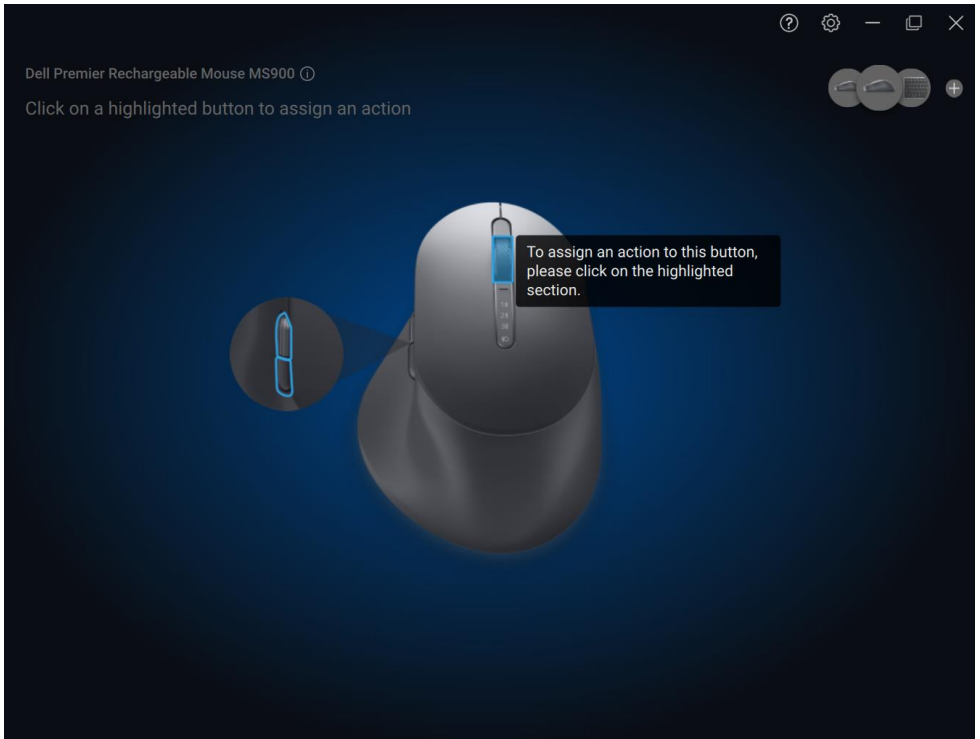


2

The user interface is simple and intuitive.

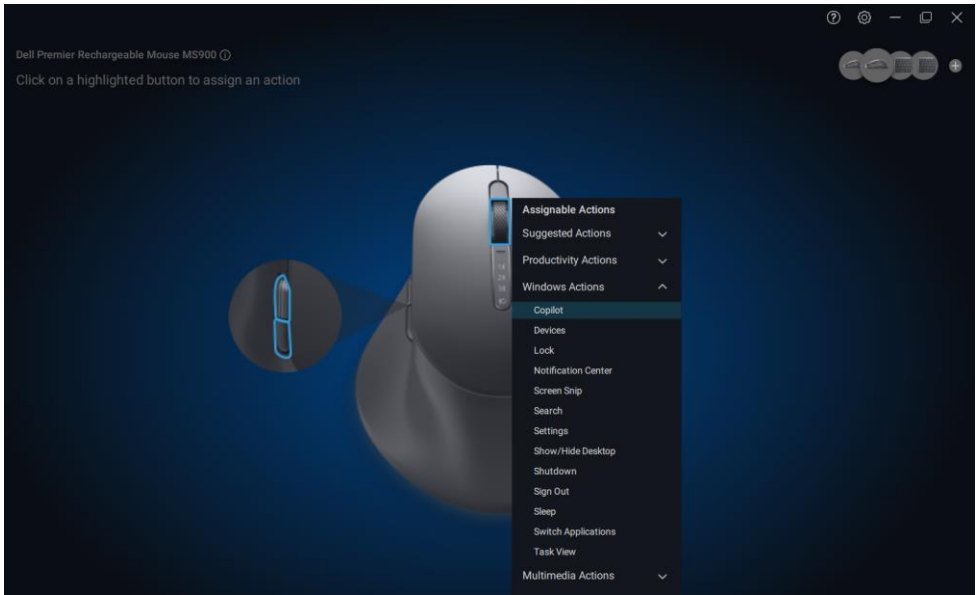
1. The Blue-bordered buttons represent the buttons for which we can assign programmable actions.
2. A Blue “flag” at the bottom-right corner of a button indicates that a custom action is assigned.





To assign an action, click on a highlighted button or key. The “Assignable Actions” box provides a list of selectable actions.

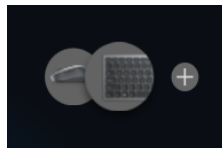




After choosing an action, pressing the corresponding button or key will trigger the action.

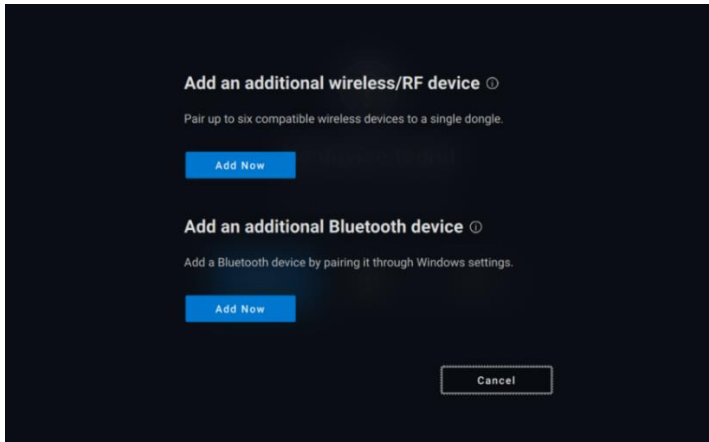
Pairing a device

Using the Dell Peripheral Manager, you can pair additional devices through Bluetooth or RF.

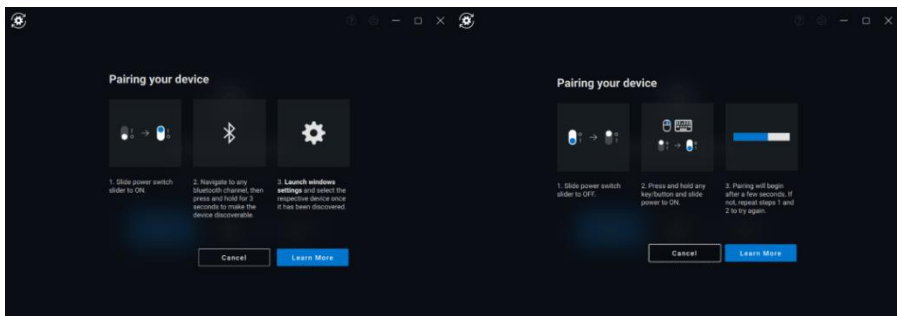


Click on the + sign on the viewing panel. A dialog box appears for connecting a new device.





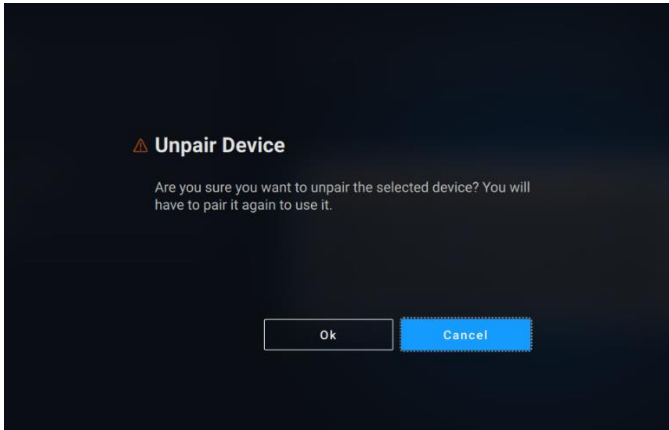
Follow the on-screen instructions for pairing a new device using both RF and Bluetooth options.



Unpairing a device

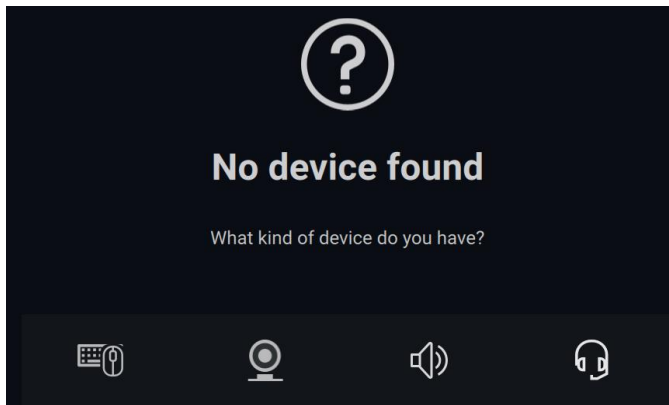
The **Unpair Device** dialog box appears when you click **Unpair**.





CAUTION: The device can no longer be used after unpairing. You will need an additional device to pair an input device again. Ensure that a backup mouse or other input device is available.

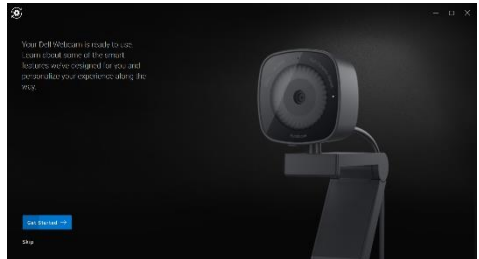
The Dell Peripheral Manager window provides a list of options when there are no Dell devices connected.



Webcam features

First-time Walkthrough

When your webcam is connected for the first time, the Dell Peripheral Manager application opens automatically. The application provides on-screen instructions and a walkthrough to personalize your webcam experience along the way.

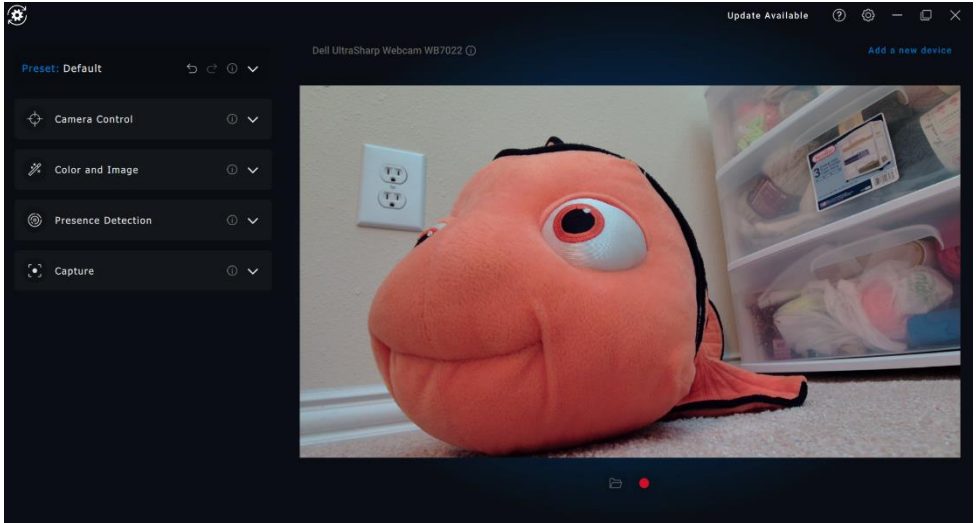


On completion of the walkthrough, you will be taken to the main screen, where a complete list of configurable items becomes available.

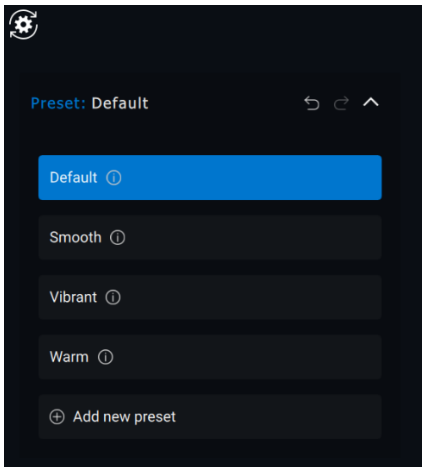


Camera Feed/Presets

A live camera feed is shown on the viewable panel whenever the Dell Webcam is connected to the computer.



You can select a preset that suits your style depending on how you want the image to appear on the camera.



You can also create a custom preset.

Configuring Your Webcam

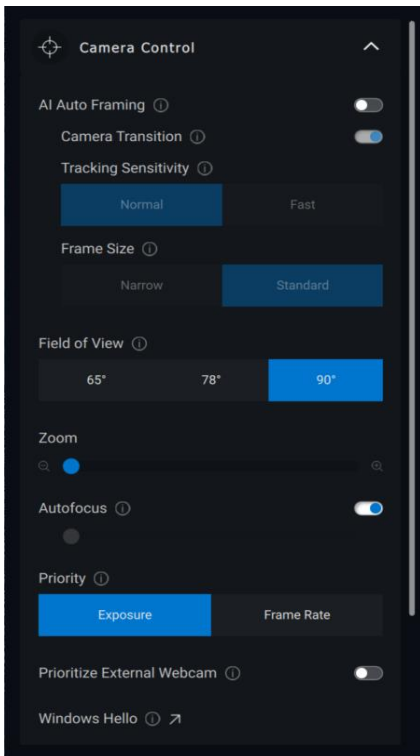
There are various models of Dell Webcam, each with its own set of features. To determine whether your webcam supports a feature, look for the icon indicating your camera model beside the feature name:

Camera Control



You can adjust AI Auto Framing, Field of View, Zoom, Autofocus, Priority and Prioritize External Webcam settings from this section of the user interface.

Prioritize external webcam and Windows Hello options are not available for webcam models WB3023 & WB5023.



- 1 AI Auto-framing
- 2 Field of View (FOV)
- 3 Zoom
- 4 Autofocus
- 5 Priority (Exposure/Frame Rate)
- 6 Prioritize External Webcam (Windows Hello)



AI Auto-framing has 3 different customizations. Users can adjust Camera Transition, Tracking Sensitivity and Frame Size from this section of the user interface.

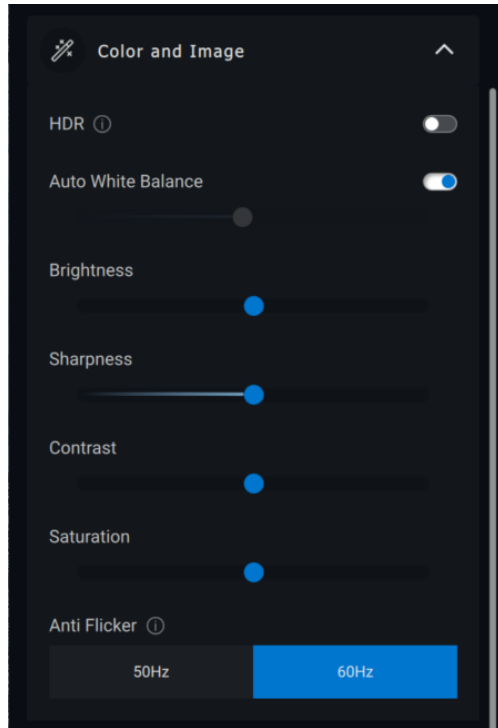
- Camera Transition – Controls how the camera tracks the person
- Tracking Sensitivity – Allows user to adjust timing (on a slider) for how fast they want tracking to take place
- Frame Size – Allows user to set positioning and sizing of face relative to the frame

Color and Image



It is possible to adjust the automatic correction for optimal image quality at various lighting conditions using HDR (High Dynamic Range). Other settings like Auto White Balance, Brightness, Sharpness, Contrast, Saturation, and Anti-Flicker settings for the Dell Webcam makes it easier to get an image of your choice.





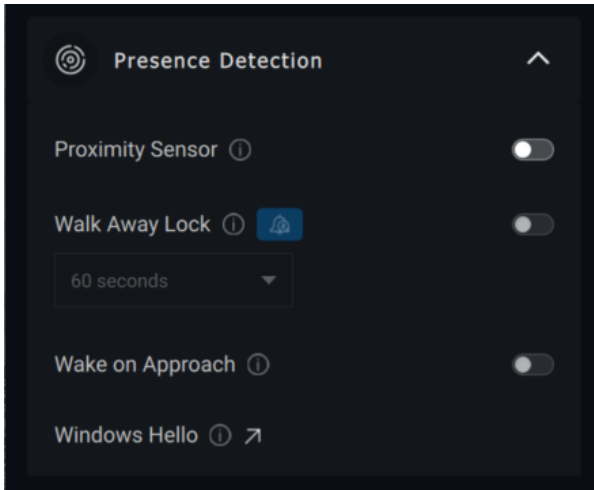
Presence Detection



Some camera models come equipped with a proximity sensor [1] that detects your presence when you are in the field of view of the sensor.

- It can lock the screen when you walk away (Walk Away Lock). [2]
 - Walk Away Lock can be temporarily disabled for a certain period by using the “Snooze” option. [3]
 - The timing for Walk Away Lock can be configured using the respective drop-down box. [4]
- It can respond to your presence by waking up your screen when you are in the field of view (Wake on Approach). [5]
- It can support the Windows Hello feature, which allows for automatic login via facial recognition. [6]





- 1 Proximity Sensor
- 2 Walk Away Lock
- 3 WAL Snooze
- 4 WAL Timer
- 5 Wake on Approach
- 6 Windows Hello

Capture



The Dell Webcam's Capture settings can be tweaked to achieve the ideal recording experience by adjusting the frames per second (FPS) and resolution properties.





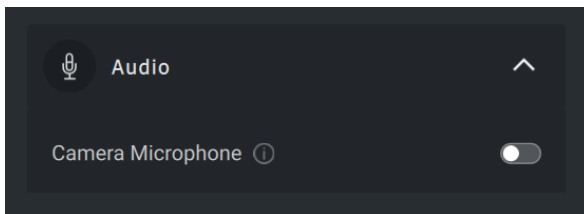
- 1 Resolution
- 2 Frames per second
- 3 Countdown for capture
- 4 Framing Grid
- 5 Media Files location

Audio



Some Dell Webcam models have a built-in microphone, providing finer audio quality during video recording or VoIP sessions.

To enable the built-in microphone, toggle the corresponding option.



NOTE: You can verify the audio enablement under Windows Settings. Navigate to *Computer -> Sound -> Input*.



Quick Access Menu

When entering a Zoom conference call, you can quickly access/control video settings such as Auto-Framing, Zoom, Presets and Field of View, by simply clicking on a small widget icon which will appear at the left side of the screen.

Toggle the corresponding option in Dell Peripheral Manager Settings -> Quick Settings tab, to disable Quick Access Menu.



FAQ related to webcam

- Why does DPM not show 4K UHD option in the user interface?

In order for the webcam to output 4K resolution, USB 3.0 is required. If USB 3.0 connection is not detected, then it is possible you can experience this issue. Check if your computer, monitor or hub has USB 3.0 port and connect the webcam to it.

- Why does DPM not detect my camera when connected via a docking station?



It is possible that the docking station is not delivering sufficient power via USB, or the firmware on the dock may be outdated. Ensure that the dock firmware is updated to the latest version and the USB port on the deck can support full USB 3.0 power.

- Why does DPM not show Presence Detection features?

This feature is only supported on Dell computers. If this issue occurs on a Dell computer, check that your computer BIOS and drivers are updated to the latest versions from the Dell Support site.

- Why is the Internal webcam or other webcam connected to my computer disabled?

To support Windows Hello facial recognition using the external webcam, Dell Peripheral Manager software may have disabled the internal webcam or other non-Dell webcams. To use other webcams please deselect the "Prioritize External Webcam" option under the "Camera Control" section in DPM.

- Why does my computer lock down shortly after a countdown is initiated?

Your webcam is equipped with a presence detection sensor. If the sensor does not detect human presence in its field of view for a specified period of time, it can lock the computer. This feature is the "Walk Away Lock" and can be enabled/disabled under "Proximity Detection" in Dell Peripheral Manager.

Note: Certain models of Dell computer are equipped with a built-in proximity sensor. In such case, it is recommended to disable Proximity Detection feature under Dell Peripheral Manager to avoid conflicting behavior.

If Proximity Detection is enabled, do not cover the lens of the webcam or else the webcam will not be able to detect human presence.



- Why am I not able to install Dell Peripheral Manager on my computer?

Please check the OS compatibility for Dell Peripheral manager

- Why does my computer not activate “Wake on Approach” (WOA) even when I enter the Field of View (FOV) of the Proximity Sensor?

If the user has not left the FOV for more than 20 seconds before reappearing, then Wake on Approach is not triggered. Wake on Approach will also not work:

- on S3 computers with battery mode
 - if USB wake-up is not enabled under BIOS
 - if computer is in hibernate or shutdown mode
- Why am I unable to see the webcam feed after a quick hot-plug of the camera?

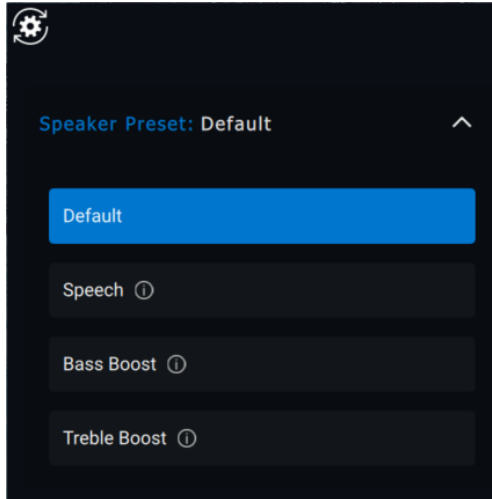
When the webcam is disconnected and reconnected too quickly, the Microsoft frame server is using the webcam resources and locks the device. In this state, no other application can access the webcam for 5-10 minutes. Please wait at least 10 seconds after unplugging the webcam before re-plugging it to the computer.



Speakerphone and soundbar features

Speaker Preset

You can select from speaker preset modes of Default, Speech, and Treble/Bass Boost, depending on the desired sound enhancements in your Dell Peripheral Manager supported speakerphone or soundbar.

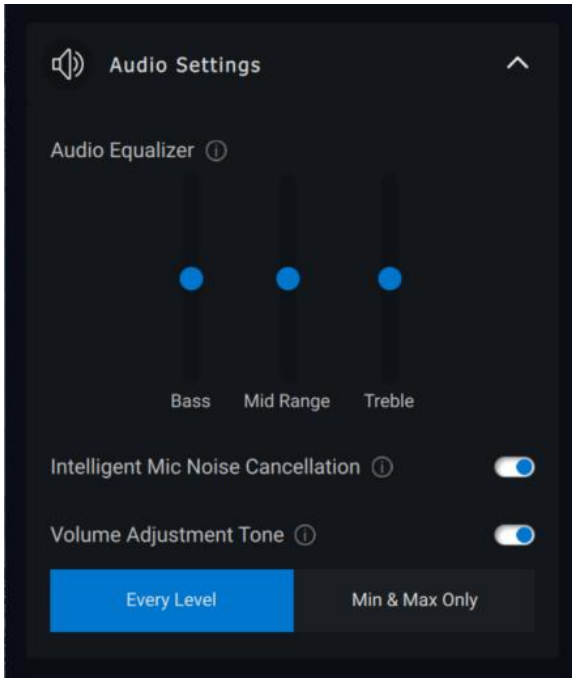


Audio Settings

You can view or change the speakerphone or soundbar settings under **Audio Settings**.

- You can change the bass, mid-range and treble levels by moving the slider to achieve the desired audio range under Audio Equalizer. [1]
- Turn on the intelligent microphone noise cancellation feature to remove any background noise to allow your voice to be clearly heard. [2]
- A tone can be played when volume is adjusted for every level or only for minimum and maximum levels under Volume Adjustment Tone setting. [3]

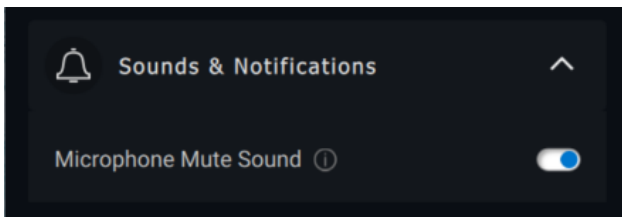




- 1 Audio Equalizer
- 2 Noise Cancellation
- 3 Volume Adjustment Tone

Sounds & Notifications

Turn on the Microphone mute sound notifications under Sounds and Notifications to play a sound when microphone is muted or un-muted.



Additional Information

By selecting “Reset To Default” in the audio device user interface, it is possible to restore the default settings related to audio equalizer, intelligent microphone noise suppression, and volume level.



Your Dell audio device also comes equipped with hardware buttons. Hover the mouse pointer over each application in the user interface to see which applications are available to use with each button.



Some common applications that may be available are:

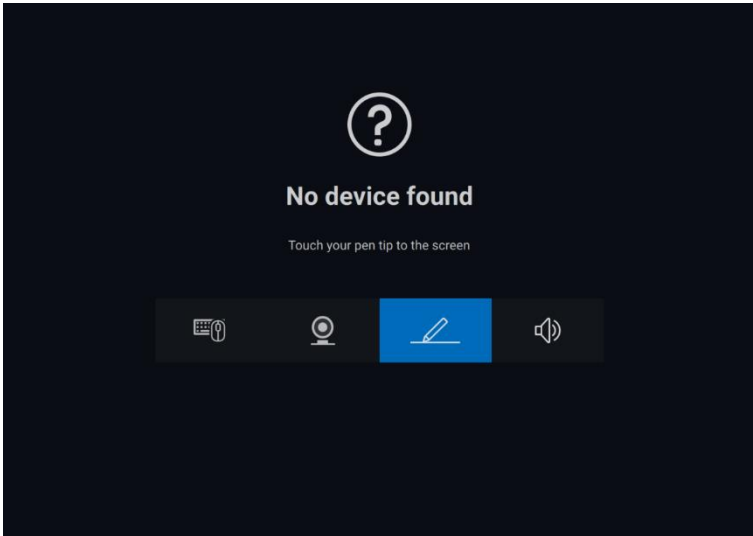
- Microsoft Teams
- Zoom
- Google Meet



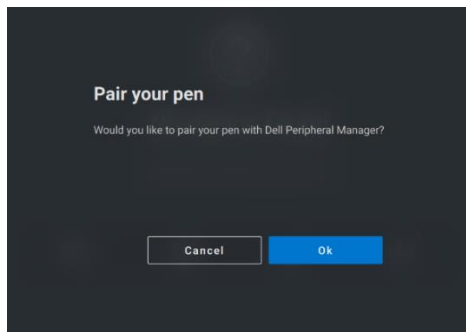
Pen features

Pairing

The pairing process for the Dell Active Pen is different from the other wireless devices.

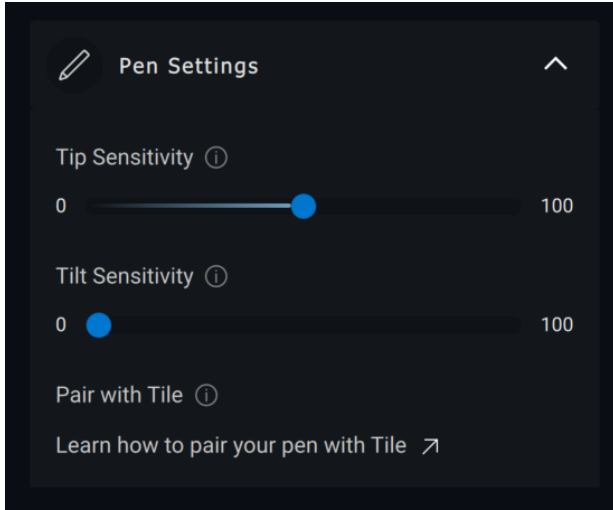


After selecting the appropriate icon, pressing the pen tip to the screen will activate a special pop-up window to allow pairing of the device.

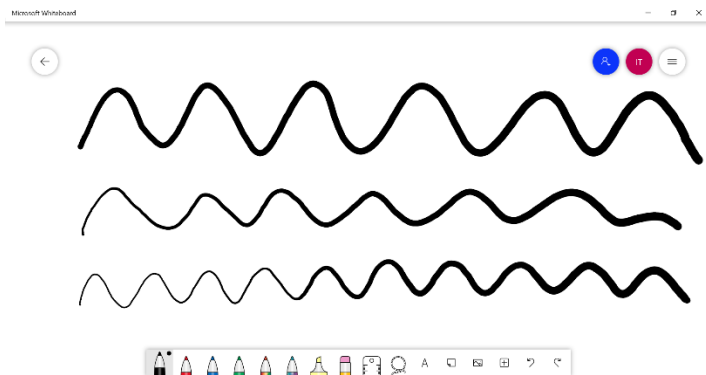


Tip/Tilt Sensitivity

The Dell Active Pen has pressure (tip) and angle (tilt) detection capabilities. These settings can be adjusted via slider bars in the respective Dell Peripheral Manager panel.

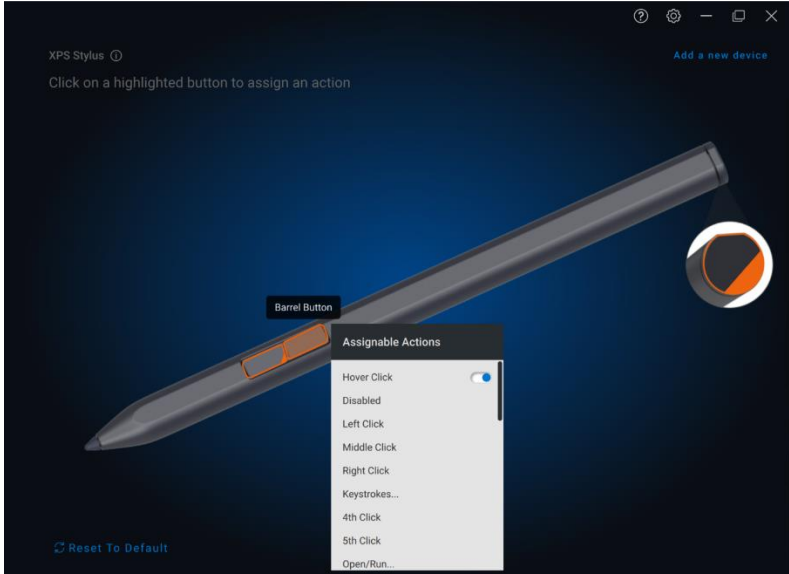


For supported applications such as Microsoft Whiteboard, the sensitivity settings will vary the brush width based on the amount of pressure and angle of the pen tip applied to the screen.

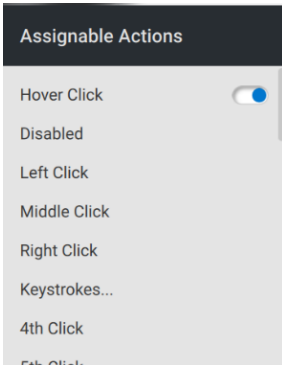


Barrel Buttons

The buttons along the cylindrical core of the Dell Active Pen are called “barrel buttons.” Actions can be assigned to these buttons by clicking on the respective regions of the pen preview (outlined in orange).



NOTE: An assigned action will be indicated by an orange dot in the dropdown list.

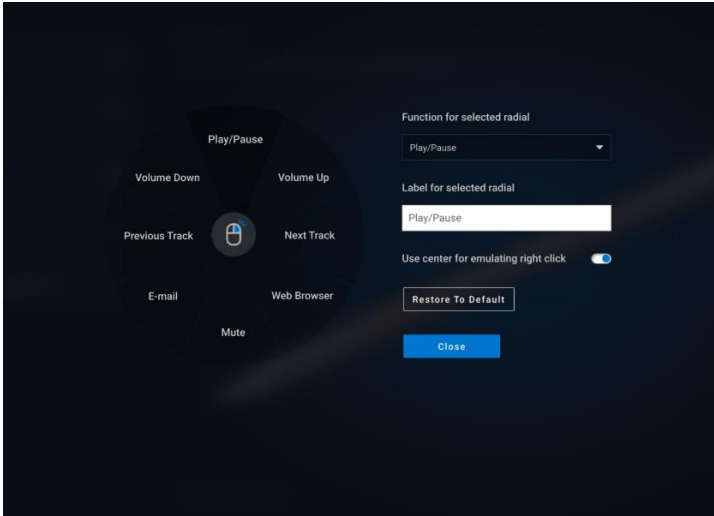


Of particular note is the “Hover Click” option, which enables the user to execute the action with the pen tip hovering near the screen instead of directly touching it.

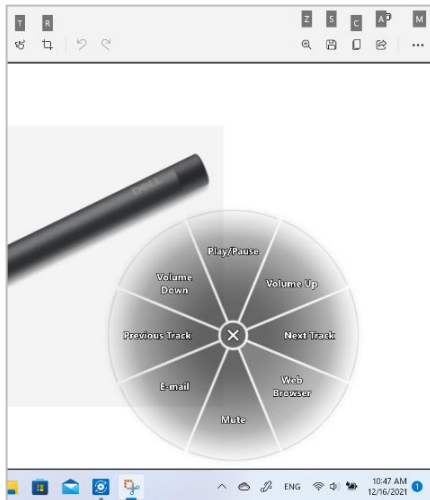


Radial Menu

The Radial Menu is a special action that can be assigned to either barrel button. It allows several actions to be configured at once.



Now, pressing the barrel button will present the pinwheel as it was customized. Any region selected will execute the action as labeled.

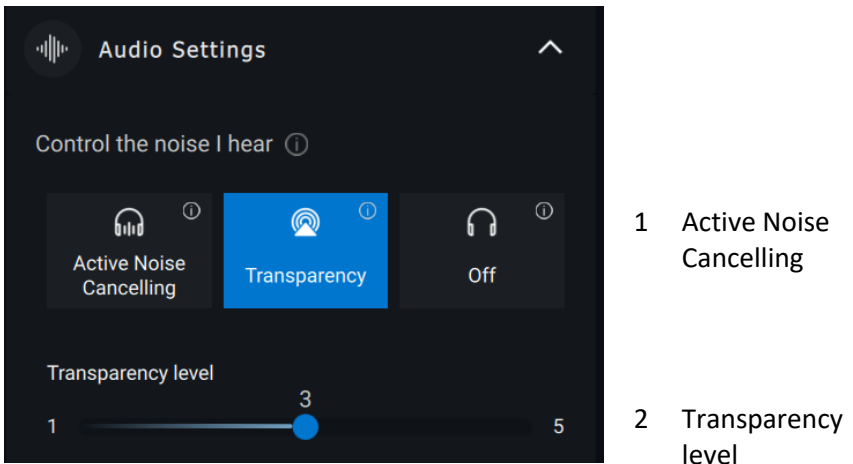


Headset features

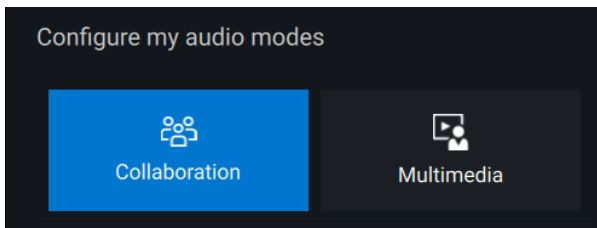
Audio Settings

Active Noise Cancellation

- Turn on the active noise cancellation feature to eliminate background and surrounding noises. [1]
- Adjust the transparency to control the level of ambient sound heard. [2]



You can view or change other headset settings stored as Modes under **Audio Settings**.

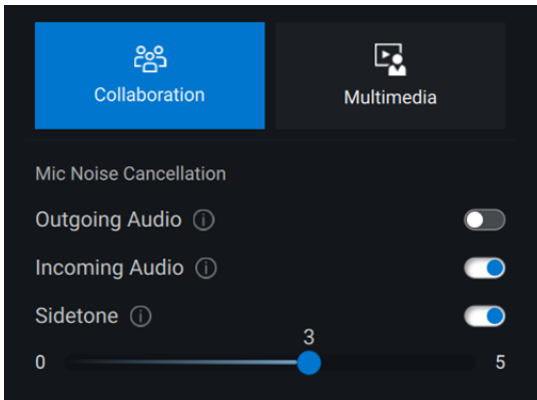


Collaboration

- Turn on the intelligent microphone Outgoing Audio noise cancellation feature that limits your near-end mic noise to create a better audio experience for other. [1]
- Turn on the intelligent microphone Incoming Audio noise cancellation feature that limits far-end mic noise to create a better audio experience for other.[2]
- Control how much you can hear your own voice while on a call, by adjusting the Sidetone slider. [3]



NOTE: These features will apply only during a call.



- 1 Outgoing Audio Noise Cancellation
- 2 Incoming Audio Noise Cancellation
- 3 Sidetone

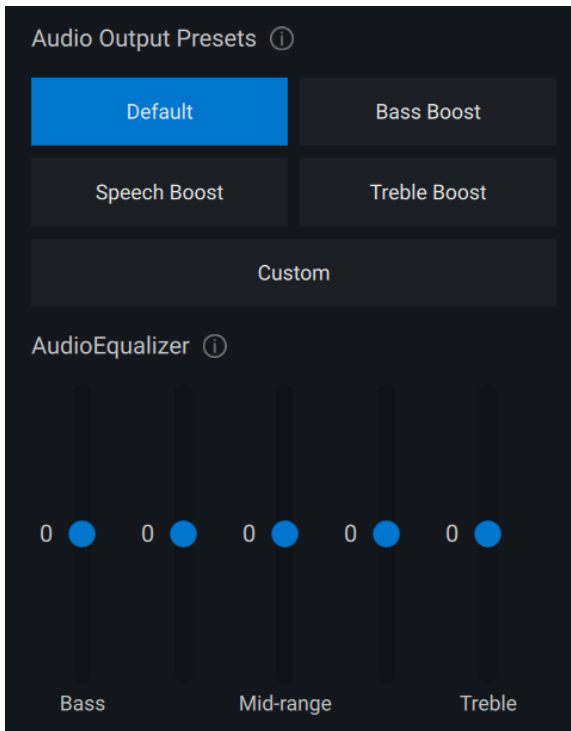
Multimedia

- You can select from speaker preset modes of Default, Bass Boost, Speech Boost, Treble Boost and Custom, depending on the desired sound enhancements in your Dell Peripheral Manager supported headset. [1]
- You can change the bass, mid-range, and treble levels by moving the slider to achieve the desired audio range under Audio Equalizer. [2]



NOTE: This feature will apply only when streaming music.





1 Audio Output Presets

2 Audio Equalizer

Automated Actions

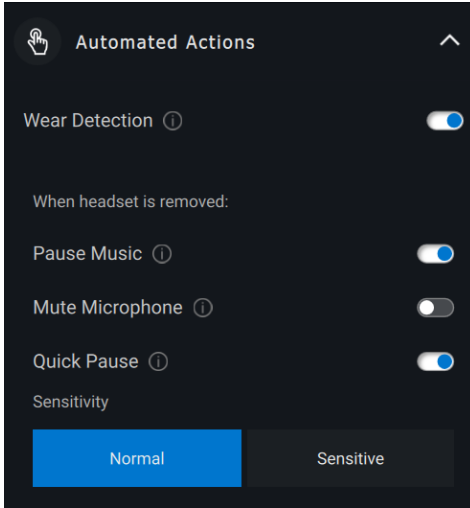
Wear Detection

You can turn on wear detection to enable automatic actions when you remove your headset.[1]

- Turn on the pause music feature to automatically pause music playback when you take them off, and resume playback when you put them back on. [2]
- Turn on the mute microphone music feature to automatically mute the microphone when the headset is removed. [3]



- You can turn on quick pause to enable automatic pause of music when you move an ear cup off your ear [4]. The sensitivity for the feature can be set to Normal or Sensitive.

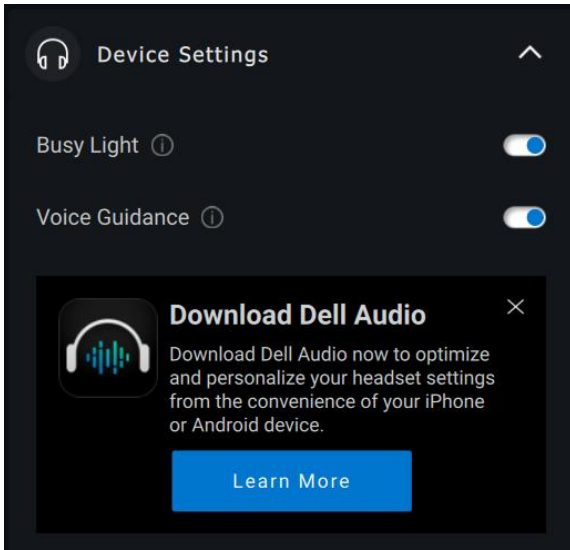


- 1 Wear Detection
- 2 Pause Music
- 3 Mute Microphone
- 4 Quick Pause

Device Settings

- Turn on the busy light feature to enable indicator light when on a call. [1]
- Turn on the voice guidance feature to hear audio prompts and announcements for device features: [2]
 - Full: Full set of voice prompts
 - Minimal: Essential voice prompts only





5 Busy Light

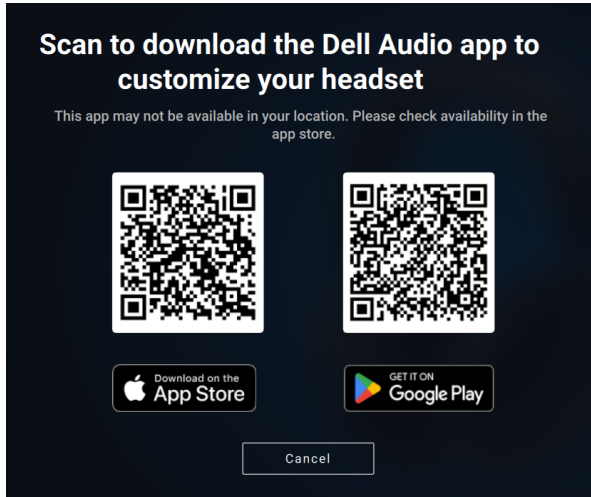
6 Voice Guidance

7 Download Dell Audio



Download Dell Audio

- Click Learn More [7] and follow instructions to download the Dell Audio mobile app to optimize and personalize wireless headset settings.



Additional Information



By selecting “Reset To Default” in the audio device user interface, it is possible to restore the default settings related to collaboration and multimedia modes.



Accessibility

Narrator

The app supports Narrator that lets you read and interact with app controls on the screen, like text and buttons, without a mouse.

- Press the **Windows logo key**  + **Ctrl** + **Enter** together to start Narrator. Press these keys again to stop Narrator.
- You can also press the **Windows logo key**  + **Ctrl** + **N** to open Narrator settings, and then turn on the toggle under Use Narrator.

Keyboard Navigation

The app supports keyboard accessibility. All controls can be accessed via Tab key. To select/invoke a control, press Spacebar key.

Scan Mode

You can navigate through the app using Up and Down arrow keys. To turn scan mode on and off, press **Narrator** + **Spacebar**.



NOTE: The Narrator key is a modifier key in the Narrator commands. Both the Caps lock key and the Insert key serve as your Narrator key by default.




Software updates

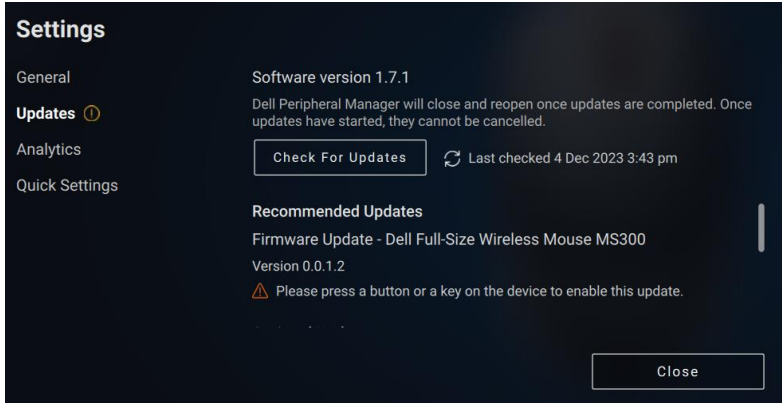
The Software update feature is used for upgrading:

- The software running on the peripheral device.
- The Dell Peripheral Manager application itself.

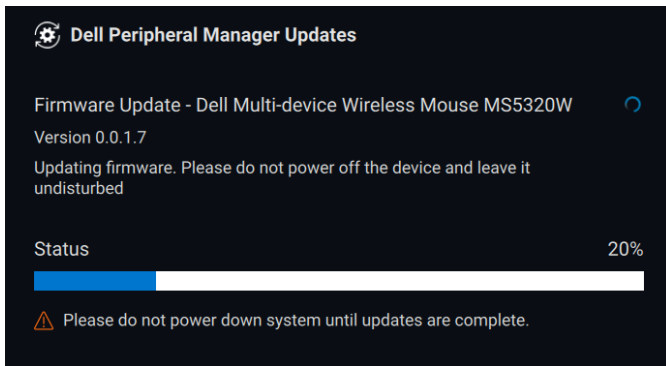
When a software update is available and the user launches DPeM, an **Update Available** screen will appear with descriptions of new hardware launches, software feature additions, and the latest bug fixes. After clicking Update button, the update process will begin.



Or you can go to  → **Updates** to view a list of available updates.



After selecting the desired updates, the update process will begin.



NOTE: Software update for RF devices requires user input. Be sure to follow the prompt.

