



CX500M RGB

CX500M RGB WHITE

Mini-Tower Gaming Case

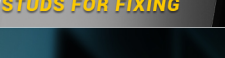
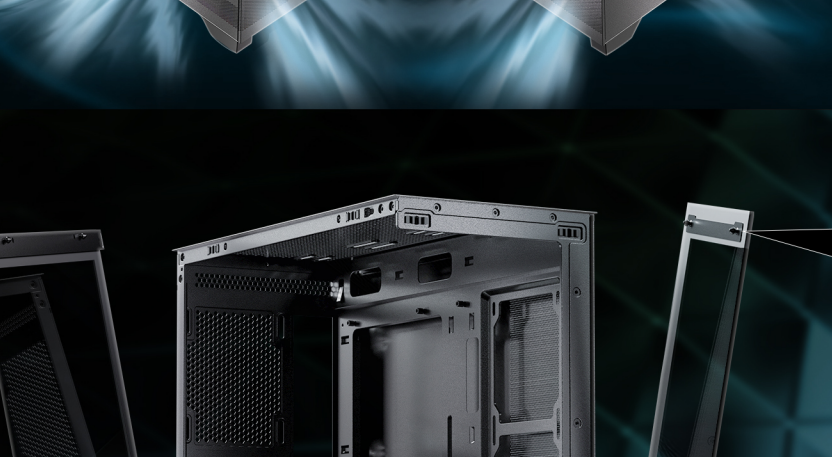


PANORAMIC 270° VIEW

Standing out with full-view design on the seamless steel-tempered glass, CX500M RGB's left and front panel offer an unobstructed view of your build, creating a stunning showcase for your components.

VERTICAL COOLING WITH MASSIVE AIR INTAKE

Bottom-up vertical airflow via mesh on lower front, lower left, and right side accelerates the heat dissipation.



Right Side



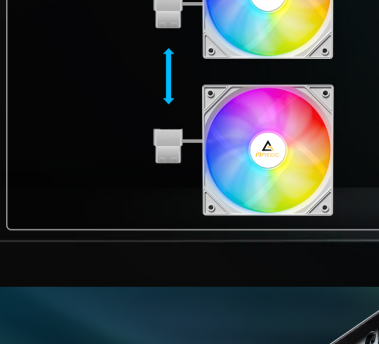
STUDS FOR FIXING

TOOL-FREE PANELS

Front and side panel adopt fixing stud design, which makes assembly and disassembly easier and helps avoid possible glass breakage.

PRE-INSTALLED 3 x 120mm FIXED MODE RGB FANS

Daisy-chained to PSU.



REAR
1 x 120mm fixed mode RGB fan



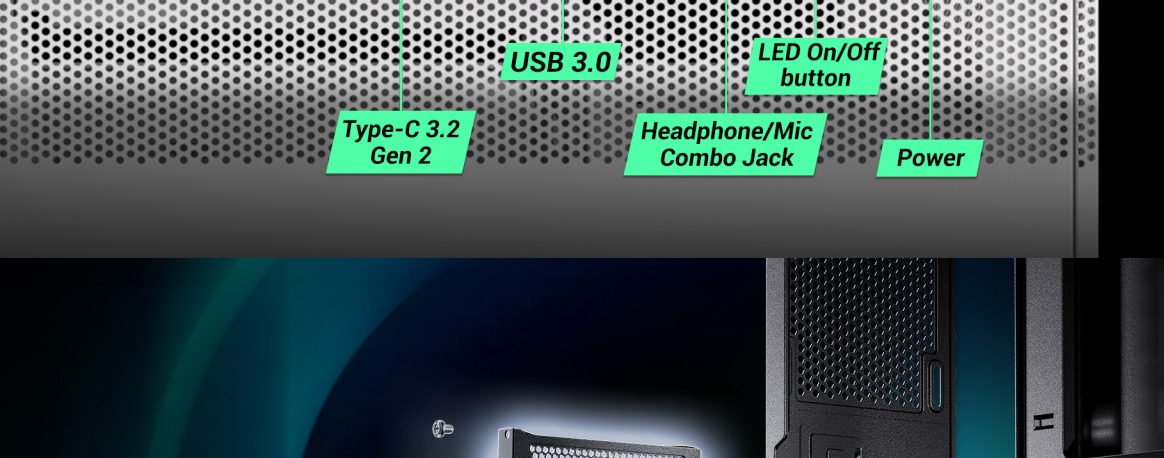
SIDE
2 x 120mm fixed mode RGB reverse fans



360mm Radiator

SUPPORT TOP 360MM WATER COOLER

I/O PANEL



Type-C 3.2 Gen 2

USB 3.0

LED On/Off button

Power

FULL REUSABLE PCI SLOT COVERS

Reusable PCI slot covers fulfill an optimal build experience.



EVA PSU CUSHION PADS

With EVA anti-vibration foams on the power supply mount position, your lovely PC hardware is well protected against any jar or resonance caused by PSU operation.

UP TO 9 FANS SIMULTANEOUSLY

TOP: 3 x 120mm / 2 x 140mm (Fans Compatibility)

TOP: Up to 360mm Radiator (Radiators Compatibility)



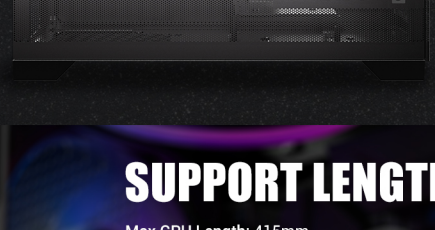
POWERFUL AIR COOLING COMPATIBILITY

Max. CPU Cooler Height: 165mm



COMPATIBILITY

- Motherboard support: Micro-ATX, ITX
- CPU cooler max height: ≤ 165mm
- GPU max length: ≤ 415mm
- 2.5" : 1
- 3.5" / 2.5" Drive Mounts: 2 / 1
- Power Supply max length: (Include cable) ≤ 210mm (With HDD), (Not include cable) ≤ 209mm (Without HDD)



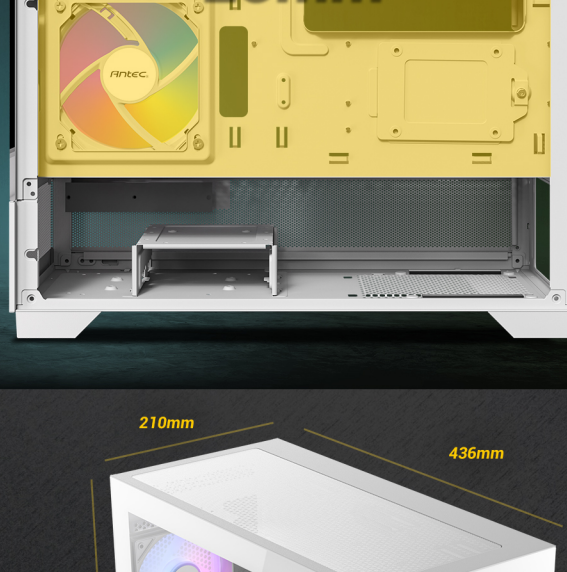
SUPPORT LENGTHY RTX 40 SERIES GPU

Max GPU Length: 415mm



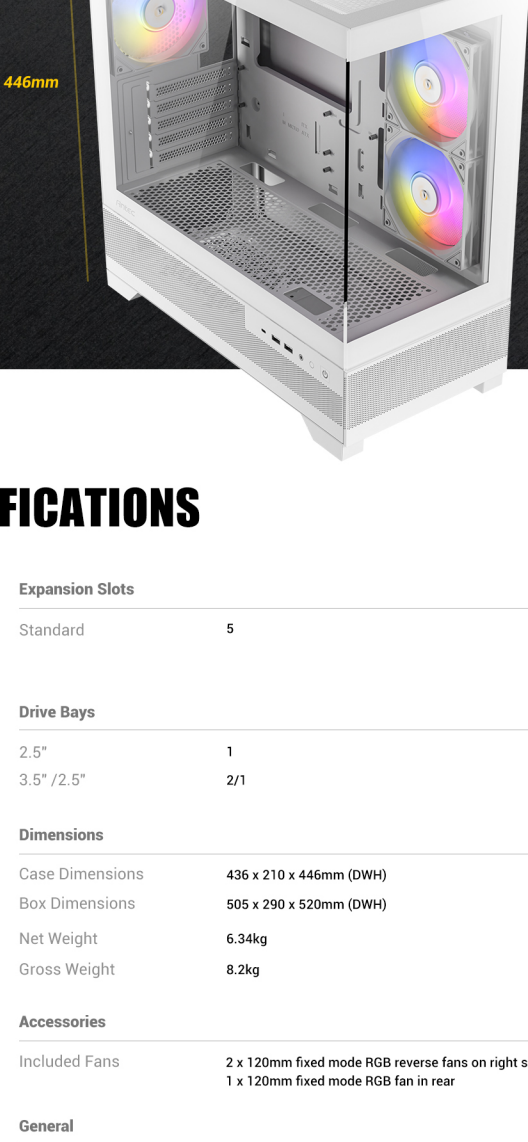
AMPLE CABLE MANAGEMENT SPACE

23mm of cable management space ensures your PC build looks neat.



DIMENSIONS

436 x 210 x 446mm (DWH)



SPECIFICATIONS

Main Spec		Expansion Slots	
Motherboard Support	Micro-ATX, ITX	Standard	5
Form Factor	Mini Tower	Drive Bays	
Case Material	Steel + Glass	2.5"	1
Side & Front Panel	4mm Tempered Glass	3.5" / 2.5"	2/1
I/O Ports	Power, LED On/Off, USB3.0 x 2, Type-C 3.2 Gen 2 x 1, Headphone/Mic Combo Jack	Dimensions	
Compatibility & Clearances		Case Dimensions	436 x 210 x 446mm (DWH)
CPU Cooler Max Height	≤ 165mm	Box Dimensions	505 x 290 x 520mm (DWH)
GPU Max Length	≤ 415mm	Net Weight	6.34kg
Power Supply Max Length	(Include cable) ≤ 210mm (With HDD), (Not include cable) ≤ 209mm (Without HDD)	Gross Weight	8.2kg
Cable Routing Space	≤ 23mm	Accessories	
Fan Support		Included Fans	2 x 120mm fixed mode RGB reverse fans on right side + 1 x 120mm fixed mode RGB fan in rear
Top	3 x 120mm / 2 x 140mm	General	
Side	2 x 120mm	Dust Filter	Top / Bottom
Power Supply Shroud	3 x 120mm	Warranty	1 year
Rear	1 x 120mm	UPC#	0-761345-10099-1 CX500M RGB 0-761345-10110-3 CX500M RGB White
Radiator Support			
Top	120/140/240/280/360mm		

