

msi

Cubi NUC 1M Infokit

V1.0



reddot winner 2024



AI ERA
OF COMPUTING

Cubi NUC 1M

msi

Cubi NUC Series

Business & Productivity PC



reddot winner 2024

Cubi NUC 1M Series

Business & Productivity PC

msi

Utilising
environment-
friendly Materials

Small in size,
without hindering
performance

Reliable
for Business

Feature packed
to enhance
productivity



Cubi NUC 1M



reddot winner 2024

The Essence of Productivity

<p>Up to Intel® Core™ 7 Processor 150U</p>			<p>AI Engine Power Meter MSI Cloud Center</p>

Cubi NUC Series

msi



PCR
(Post-Consumer
Recycled Plastic)



0.826-Liters



VESA
Mountable



reddot winner 2024

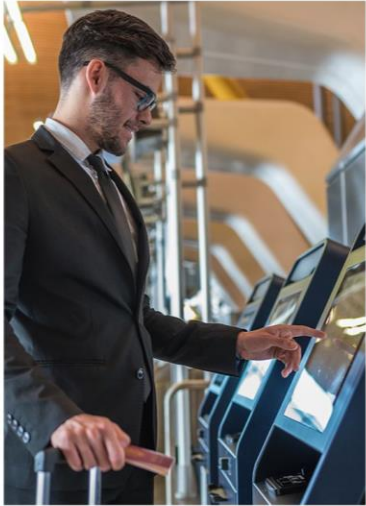


Sleek & Elegant

Resilient and Pioneering Spirit of Your Business

Your business should be empowered to stop at nothing while navigating your journey with the MSI Business & Productivity Series products.

Find more details about many of these projects on: <https://www.msi.com/pro-projects/global>



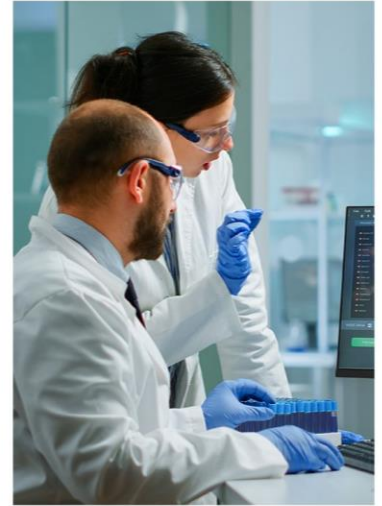
Digital Signage &
Public Service



Business &
Restaurant



Education



Medical & Science

Environment-friendly Materials



By utilizing green materials like post-consumer recycled (PCR) plastic and sourcing renewable energy for our factory,

we ensure the durability of our products and demonstrate a strong commitment to creating a greener world.

Built for Sustainability

msi

The Cubi NUC Series blends business-centric design with environmental responsibility - an embodiment of MSI's dedication to sustainability. By utilizing green material, PCR (Post-Consumer Recycled) plastic, ensures not only the products' durability but also commits to a greener world.

Our commitment extends to incorporating sustainable materials in both our product design and packaging, all of which hold certification from ENERGY STAR®. The Cubi NUC Series embodies sustainable value and heightened productivity.



The mark of
responsible forestry
FSC® N004460



PCR (Post-consumer Recycled) Plastic

msi



42.9%

Post-consumer Recycled (PCR) Plastic

The Cubi NUC mini PC contains 42.9% PCR plastic, reducing plastic waste sent to landfills and contributing to environmental conservation.

Sustainably Sourced Wood Pulp

FSC-certified cartons are made from sustainably sourced wood pulp, ensuring responsible forest management. This certification guarantees that the materials are renewable and low-carbon, promoting environmental sustainability.

By using FSC-certified cartons, MSI supports sustainable practices and contributes to the preservation of forests for future generations.



Renewable Energy - Solar and Wind Power

MSI has installed solar panels on the entire factory roof, resulting in a 64.53% reduction in TCO_{2e} compared to the data from 2021.

Additionally, by purchasing wind power, the factory now uses renewable energy for 92% of its energy needs. This demonstrates MSI's commitment to environmental protection and sustainable development.



Renewable Energy

MSI Power Meter

msi

Power Meter can track power usage and implement energy-saving measures for AIO PCs and Desktop PCs. Users can monitor real-time power consumption, or activate one-click power-saving modes, carbon emissions calculation and energy cost analysis.



Power Meter



One-click
Power Saving

Calculator

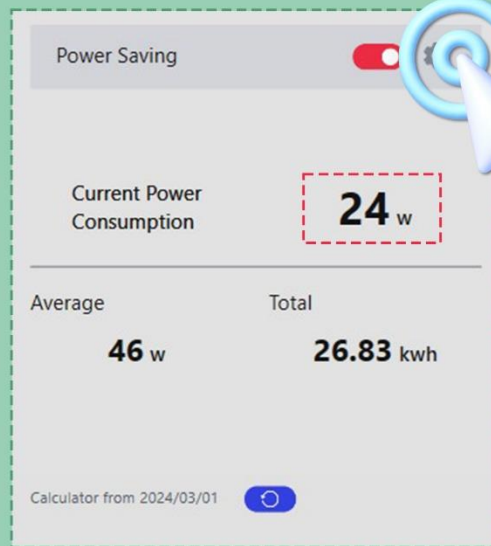
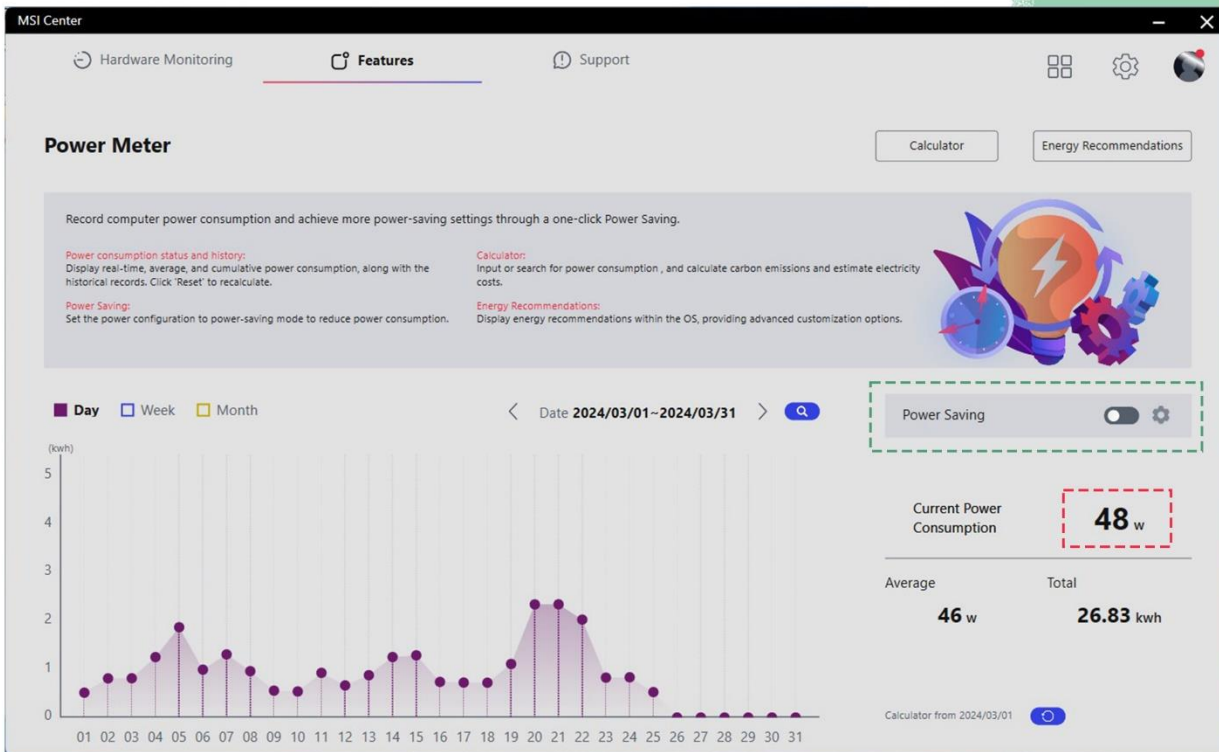
Energy
Recommendations



One-click Power Saving

The MSI Power Meter can record the computer power consumption and achieve more power-saving settings through a One-click Power Saving button.

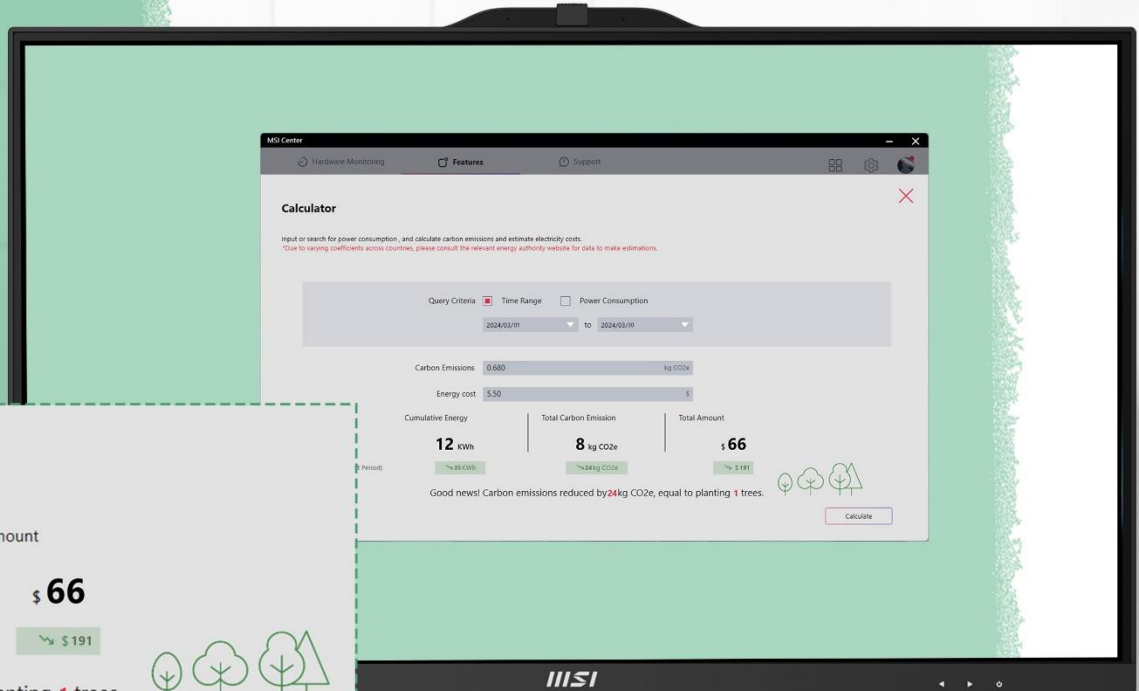
One-click
Power Saving



Consumption Calculator

By analyzing computer usage and energy costs, users can gain insights into their carbon footprint and the environmental benefits, such as trees saved.

Calculator



Carbon Emissions 0.680 kg CO2e

Energy cost 5.50 \$

Cumulative Energy

12 kWh

↘ 35 kWh

Total Carbon Emission

8 kg CO2e

↘ 24 kg CO2e

Total Amount

\$ 66

↘ \$ 191

Good news! Carbon emissions reduced by 24kg CO2e, equal to planting 1 trees.



Customizable Power-saving Settings

Energy recommendations collect settings that have an outsized impact on power consumption in one place, making it easy to reduce the power consumption.

Customizable Power-Saving Settings

The screenshot shows the MSI Center interface with the 'Power Saving' section active. It features four adjustable settings:

- CPU Usage Limit:** A slider set to 50, with a range from 0 to 100.
- Screen Brightness:** A slider set to 36, with a range from 0 to 100.
- Screen Timeout:** A dropdown menu set to 'Never'.
- Sleep Timeout:** A dropdown menu set to 'Never'.

&

Energy Recommendations



System > Power > Energy recommendations



Great start—keep going!

Apply energy saving recommendations to lower your carbon footprint
[Learn more](#)

Apply all

- Set the power mode for best energy efficiency
- Set the screen brightness for best energy efficiency
- Put my device to sleep after 10 minutes
When you apply this change, we'll also update the timeout setting for your screen.
- Turn off my screen after 3 minutes
- Help improve battery by optimizing the content shown and brightness
- Turn off my screen saver

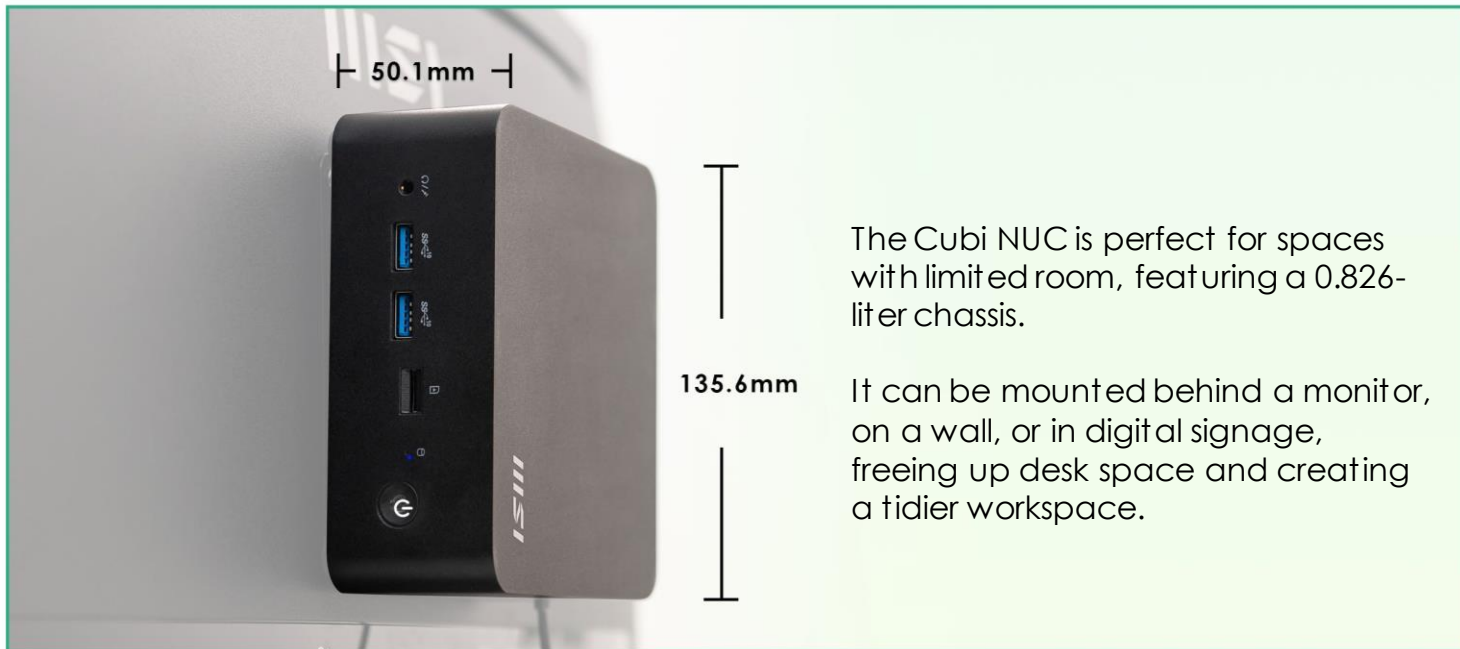
Mini Yet Powerful

msi



The Cubi NUC is the ideal solution for confined spaces. It confidently handles a myriad of tasks, from basic computing to multimedia streaming and multitasking, leveraging their compact size.

Maximize Space with the Versatile Cubi NUC



Tailored for Professional Users

Equipped with up to Intel® Core™ 7 Processor 150U with 10 cores and 12 threads, it provides faster and more reliable performance. It also features 5.40 GHz with Intel Turbo Boost Max Technology 3.0, which allows users to multitask a variety of applications with ease.

Up to
**Core 7 Processor
150U**

Support
Windows 11 Pro

Up to 5200MHz
DDR5 64GB
Dual Channel Memory

intel CORE 5 intel CORE 7 intel CORE 3

*The actual specification will vary by model.

DDR5 Dual-Channel Memory

DDR5 memory with dual-channel can enhance work efficiency and quality, processing large amounts of data and complex multitasking quickly and reducing waiting times and delays.

*The actual specification will vary by model.



Thunderbolt 4: A Single Cable to Serve All



Quadruple Display Support



msi

Supporting up to 4 displays with HDMI™-out and Thunderbolt 4 allows for increased productivity by providing more screen space to manage multiple applications simultaneously.



VESA Mountable Design

With its VESA Mountable design, the Cubi NUC Series can be easily installed in any location, providing users with greater flexibility and efficient space management in both home and office settings.



MSI Power Link



The Cubi NUC Series can be powered on using the power button on the MSI-selected monitor to bring the most convenient user experience.



24 / 7 Qualified Reliability Test

msi



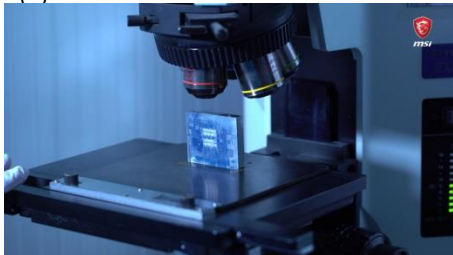
Our relentless commitment to quality is reflected in our extensive reliability testing, which generates over 246,000 hours of MTBF (Mean Time Between Failures). We assure 24/7 reliability and availability, delivering an effort less user experience.

Quality is not just a buzzword for us, it's our top priority to deliver a hassle-free and high-quality product.



Intensive Quality testing

(1) PCBA test



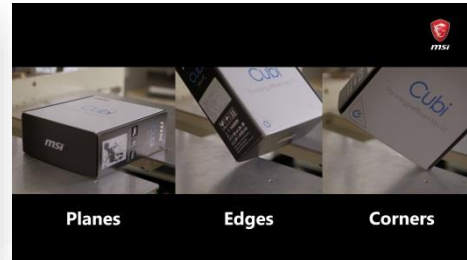
(2) Motherboard test



(3) Vibration test (X & Y Axis)



(4) Drop test



(5) Chamber test (Temp. & Humidity)



(6) Infrared (IR) test



(7) Acoustic test



(8) Signal test



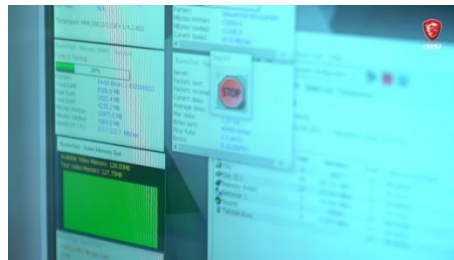
(9) I/O port life test



(10) Power test



(11) System performance test



Uncompromising Product Quality

msi

MSI products exemplify uncompromising quality.

Through strict adherence to the MIL-STD-1916 testing standard in our factory inspections, we consistently achieve excellence in performance, durability, precision, and reliability.

This commitment places MSI at the forefront, enabling us to consistently deliver outstanding designs to customers.

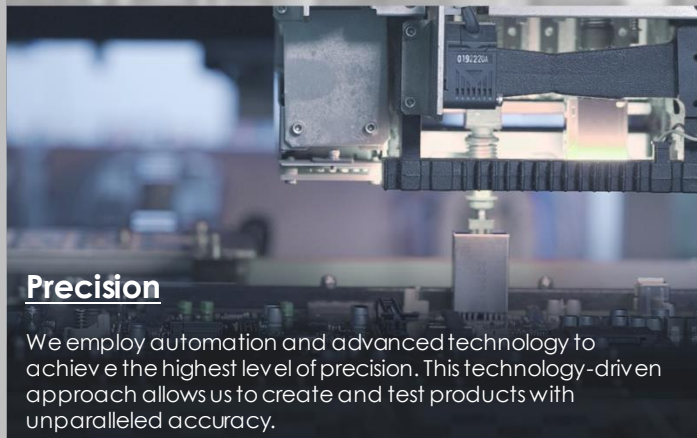
MSI modernized factory offering high-quality products Video:

<https://www.youtube.com/watch?v=7v72GPn7CMc>



Performance Assurance

MIL-STD-1916 testing guarantees MSI products meet high-performance standards, providing reliable and professional experiences with desktop PCs at their best.



Precision

We employ automation and advanced technology to achieve the highest level of precision. This technology-driven approach allows us to create and test products with unparalleled accuracy.



Durability

MIL-STD-1916 testing ensures every component meets strict durability standards, making MSI products capable of lasting through extended gaming and work sessions while delivering reliable performance.

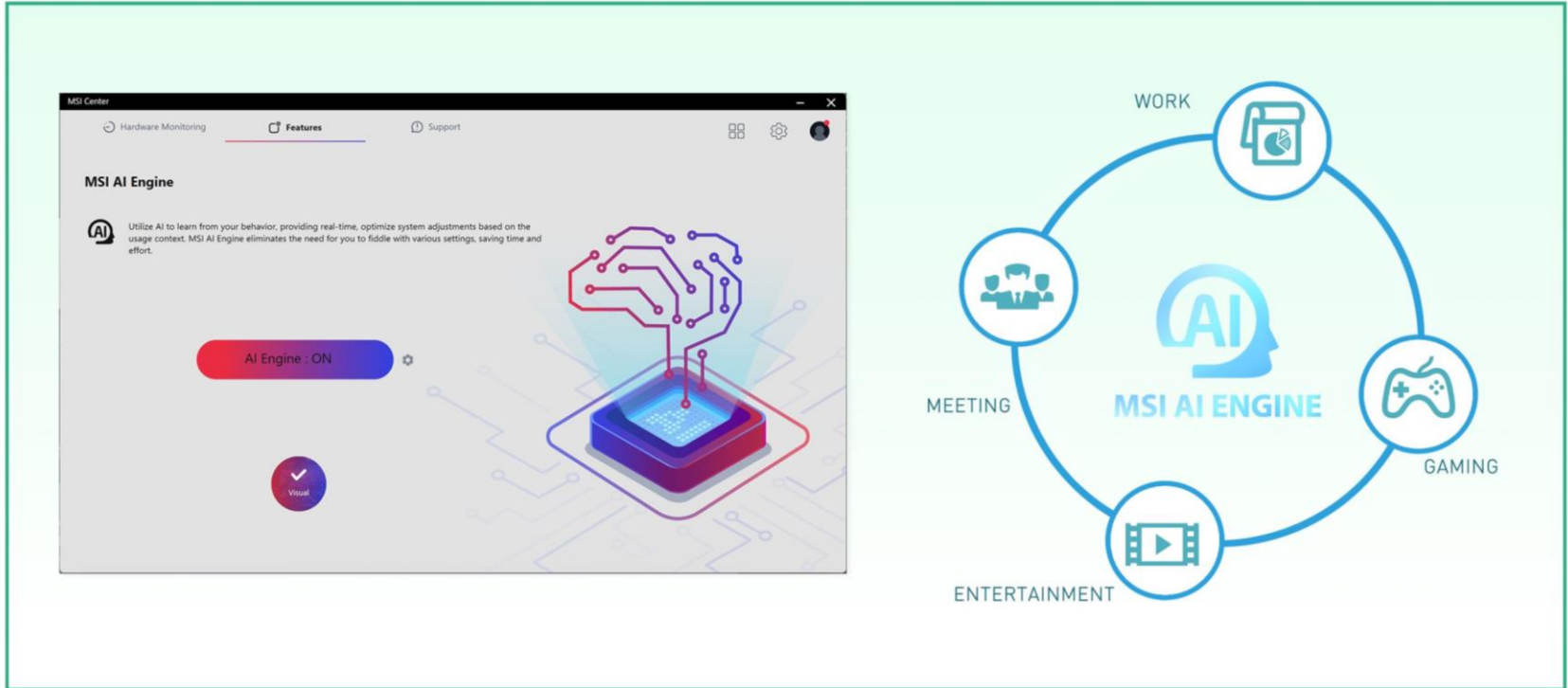


Reliability

In the world of business, reliability and dependability are crucial. MSI products go through rigorous testing and quality checks to minimize the chances of failure, ensuring an uninterrupted workflow.

MSI AI Engine

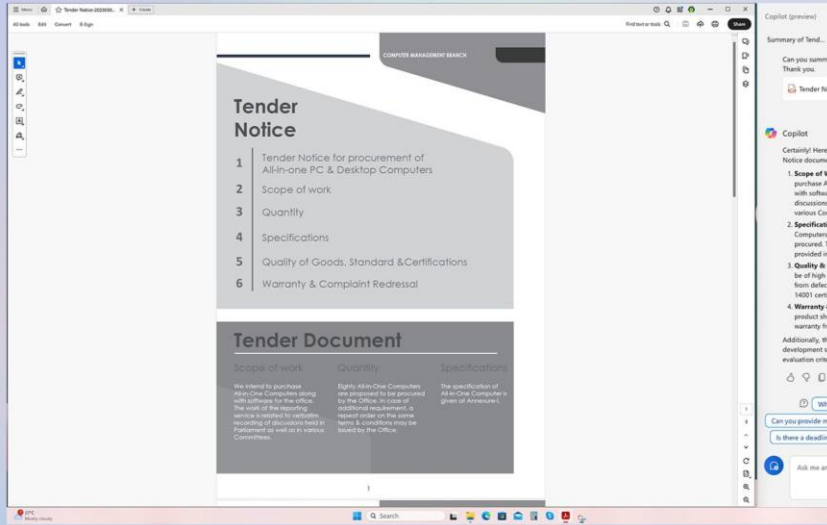
Experience the convenience of MSI AI Engine automatically detecting user scenarios to provide the optimal display mode, eliminating the need for manual adjustments.



Microsoft Copilot

msi

Work smarter, be more productive, boost creativity, and stay connected to the people and things in your life with Copilot—an AI companion that works everywhere you do and intelligently adapts to your needs.



Copilot

Certainly! Here's a summary of the Tender Notice document:

- 1. Scope of Work:** The office intends to purchase All-in-One Computers along with software for verbatim recording of discussions held in Parliament and various Committees.
- 2. Specifications:** Eighty All-in-One Computers are proposed to be procured. The specification details are provided in Annexure-I.
- 3. Quality & Certifications:** Goods must be of high quality, unused, and free from defects. OEM certifications and ISO 14001 certification are required.
- 4. Warranty & Complaint Redressal:** The product should have a 3-year onsite warranty from the OEM.

Additionally, the document outlines website



Copilot

Your everyday AI companion

MSI Cloud Center

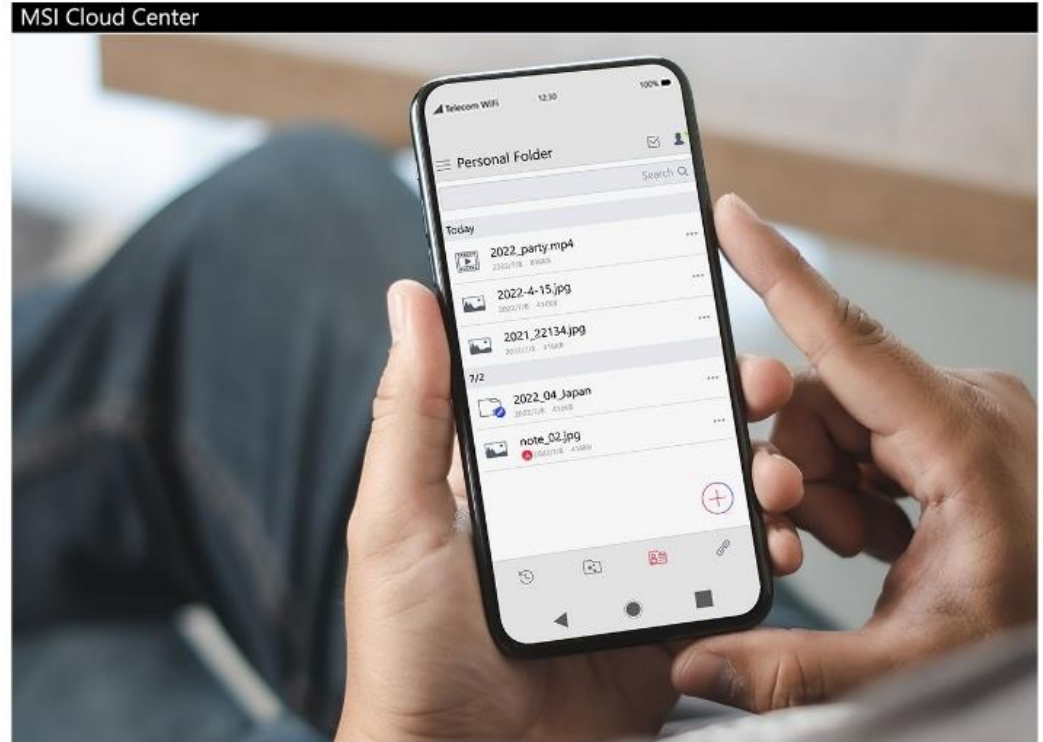
msi



Fast, secure & wireless backup
between PC, Android & iOS Devices

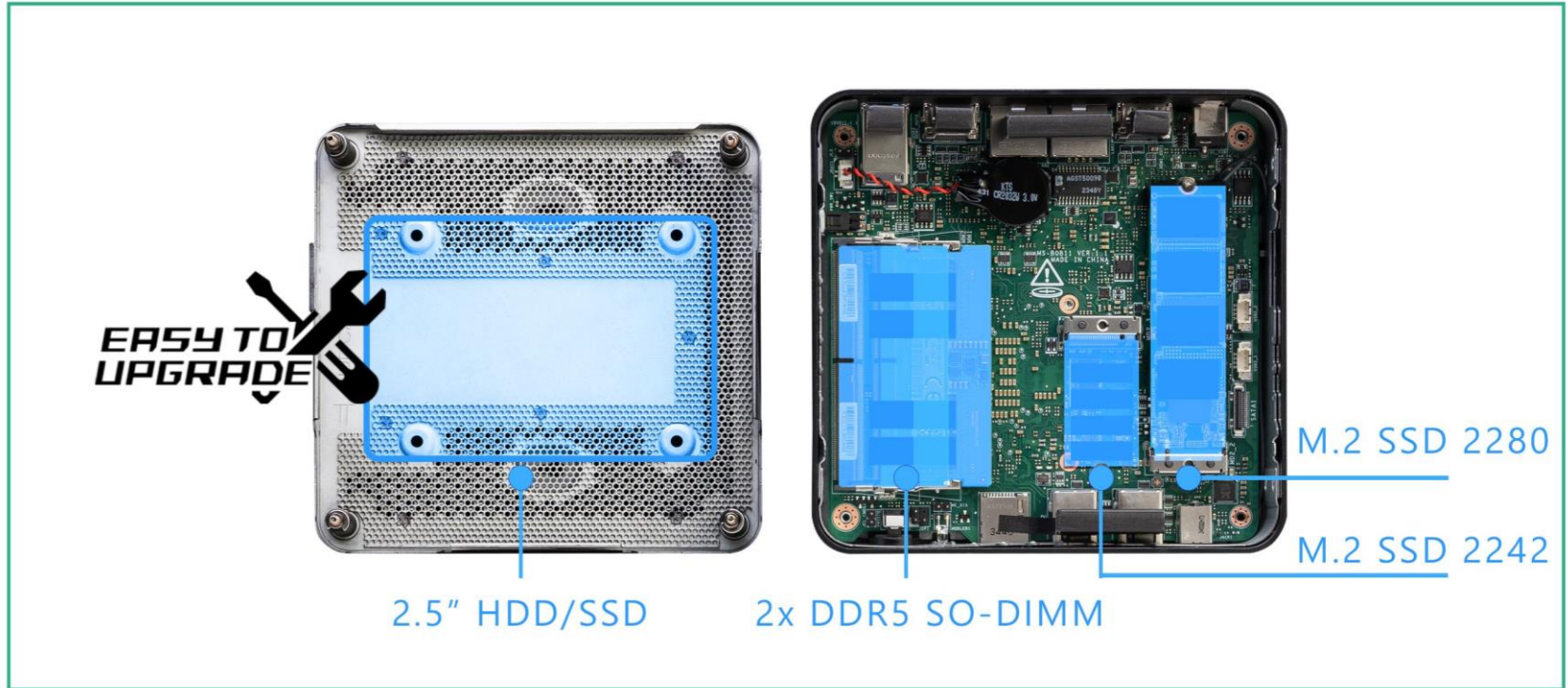
More information, please visit:

<https://www.msi.com/Landing/MSI-Cloud-Center>



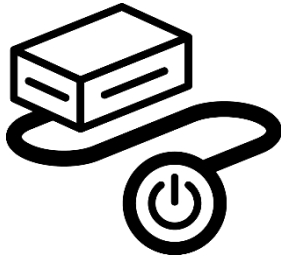
Easy to Upgrade

Users can easily upgrade two SO-DIMM, two M.2 SSDs (2280 & 2242), or one 2.5" HDD/SSD by disassembling the cover. This makes Cubi NUC an even more flexible desktop and also reduces the time wasted on upgrading.



External Power Switch

The external power switch significantly enhances the convenience of turning on the computer. In cases where the computer is situated in a hard-to-reach area, opting for the external power switch on the desk is far superior to bending down to turn it on.

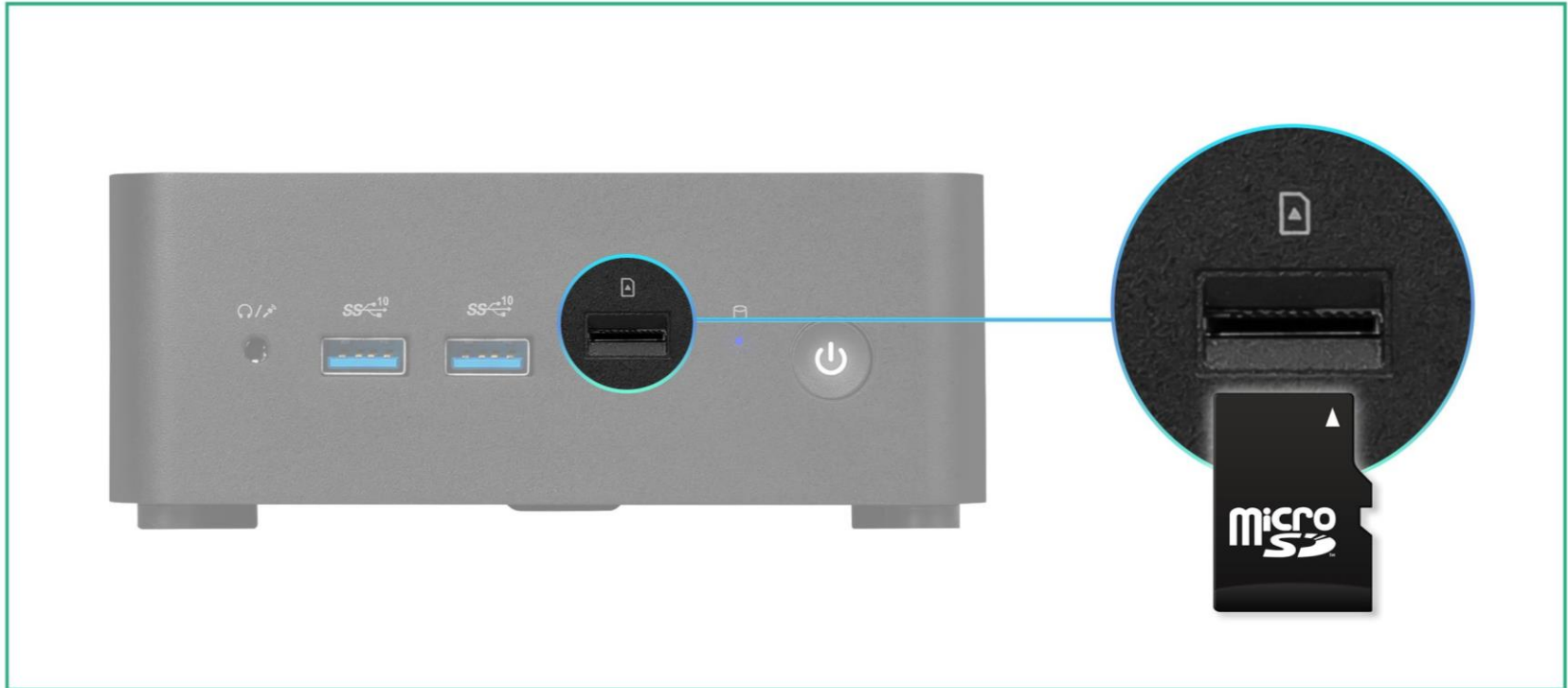


External Power Switch



Built-in Card Reader

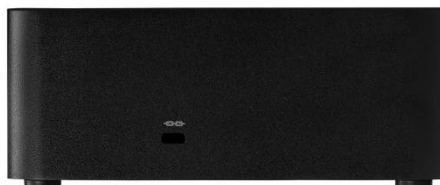
The Cubi NUC Series features a built-in card reader, enabling easy file transfers using a Micro SD card.



Cubi NUC 1M I/O Port

With a various array of I/O ports, it can connect all devices users need at the same time so they can multi-task with those devices to make them work more efficiently.

Front:



Front:

1. 1x Mic-in / Headphone-out combo
2. 2x USB 10Gbps Type A
3. 1x Micro-SD card Reader

Side / Rear:

4. 1x External Power Switch Slot
5. 2x USB 10Gbps Type A
6. 1x HDMI out (supports 4K @60Hz as specified in HDMI 2.1)
7. 1x RJ45 LAN (2.5G)
8. 1x HDMI out (supports 4K @60Hz as specified in HDMI 2.1) which supports the MSI Power Link
9. 1x DC Jack
10. 1x Thunderbolt 4 (DP 2.1 alt-mode up to 8K@60Hz / PD-out 15W)
11. 1x Thunderbolt 4 (DP 2.1 alt-mode up to 8K@60Hz / PD-out 15W / PD-in up to 100W)
12. 1x Kensington Lock Slot

Operating System	Recommended with Windows 11 Pro (No OS with Barebone Version)
CPU	Intel® Core™ 7 processor 150U (12M Cache, 1.80 GHz up to 5.40 GHz) Intel® Core™ 5 processor 120U (12M Cache, 1.40 GHz up to 5.00 GHz) Intel® Core™ 3 processor 100U (10M Cache, 1.20 GHz up to 4.70 GHz)
Chipset	Intel® SoC
Storage	1x M.2 2280 SSD (PCIe), 1x M.2 2242 SSD (PCIe), 1x 2.5" HDD/SSD (No Storage with Barebone Version)
System Memory	2x DDR5 up to 5200MHz SO-DIMMs, up to 64GB (No RAM with Barebone Version)
Graphics	CORE 7 & CORE 5 : Intel® IRIS XE Graphics CORE 3 : Intel® UHD Graphics
Sound	Realtek® ALC256
I/O (Front)	2x USB 10Gbps Type A, 1x Mic-in / Headphone-out combo, 1x Micro-SD Card Reader
I/O (Rear)	2x Thunderbolt 4 (DP 1.4 alt-mode up to 4K@60Hz / PD-out 15W / One of TBT supports PD-in), 2x USB 10Gbps Type A, 2x RJ45, 2x HDMI out (supports 4K @60Hz as specified in HDMI 2.1)
I/O (Side)	1x Kensington Lock, 1x External Power Switch Pin Header
TPM	dTPM 2.0
Wireless LAN	Intel WiFi 6E AX211
Bluetooth	5.3 (for AX211)
LAN	2x Intel® I226V
AC Adapter / PSU	120W
Cooling System	Fan Cooler
Volume	0.826 Liter (1.75 pint)
Dimension (WxDxH)	135.60 x 132.50 x 50.10 mm (5.34 x 5.22 x 1.97 inch)
Weight (N.W./ G.W.)	0.6257 kg (1.38 lbs) / 1.439 kg (3.17lbs)
VESA Mount	75 x 75 mm and 100 x 100 mm
Kensington Lock	Yes, Supported
External Power Switch	Yes, Supported
Accessory	1x Quick Guide, 1x Power Cord, 1x Mount Bracket, 1x External Power Switch

Cubi NUC 1M Specification



red dot winner 2024



Successful & Stylish B2B projects

msi

Over the past years, MSI has successfully supported Countless of commercial projects, including government tenders, restaurant & hotel facilitation, shopping mall navigation projects, school & university developments and professional office projects.

Find more details about many of these projects on: <https://www.msi.com/pro-projects/global>



msi

AI ERA OF COMPUTING



msi



Official Partner

AMG
MOTORSPORT

