

## 1. Disassembly Procedures:

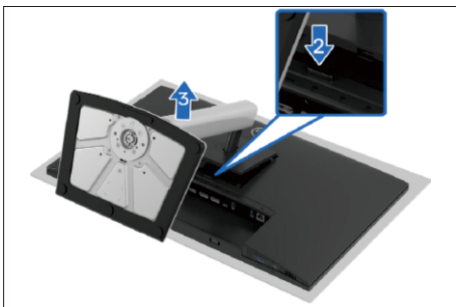
**S1** Turn off power..



**S2** Unplug external cables(power cable and video cable) from the monitor.



**S3** Remove stand from the product.(Press the stand release button, lift the stand up and away from the monitor)



**S4** Use a Philips-head screwdriver to remove four screws for unlocking mechanisms.  
(No.1~4 screw size=M4x10; Torque=10±1kgfxcM)

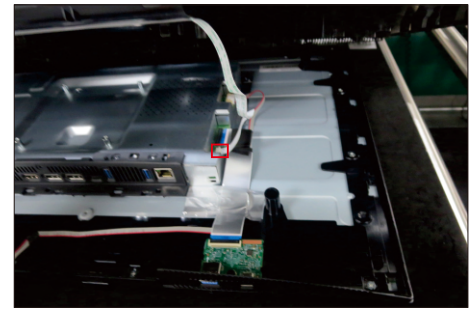


Wedge your fingers between the rear cover and the middle bezel on the corners of the top side of the monitor to release the rear cover, then use one hand to press the middle bezel, the other hand to pull up carefully the rear cover in order of arrow preference for unlocking mechanisms of rear cover.

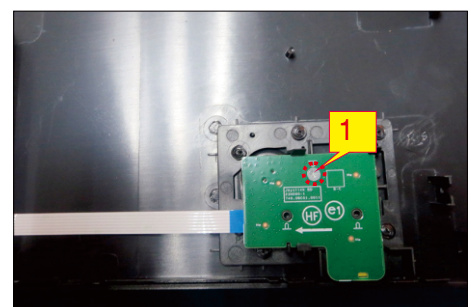
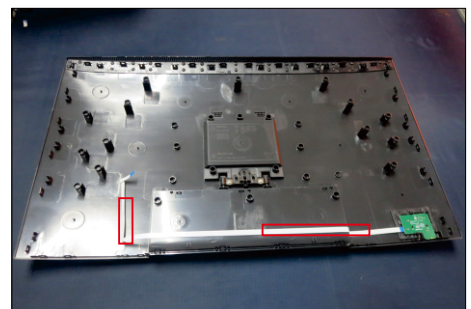
**S5**

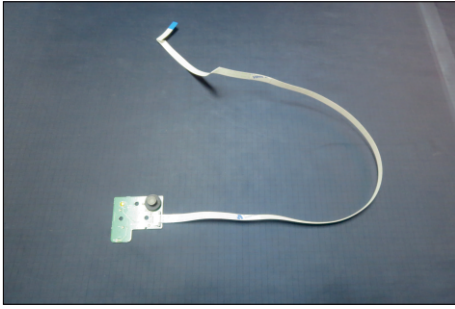


**S6** Lift the rear cover up carefully. Disconnect the joystick cable from the connector of the interface board, and then remove the rear cover.



**S7** Put the rear cover into a fixture jig, then release the key cable by tearing off the tapes. Use a Philips-head screwdriver to remove 1pcs screws for unlocking the joystick key board with the rear cover.  
(No.1 screw size=M2x3.3,Torque=1±0.2kgfxcM)

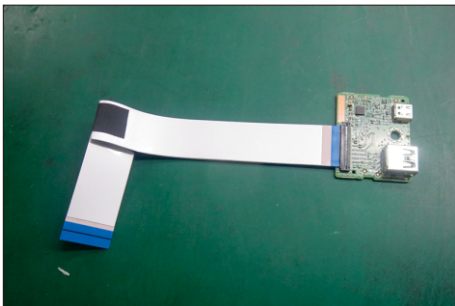
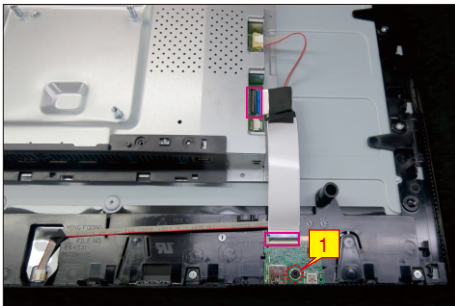
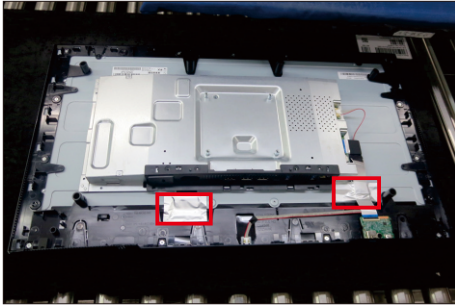




S8

Tear off 2pcs aluminum foil, then use a Philips-head screwdriver to remove 1pcs screw for unlocking the USB unit, then disconnect the USB cable away from the board and release the USB board unit.

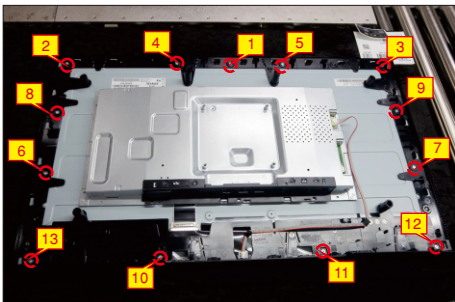
(No.1 screw size=M3x6, Torque=4±1kgfxcM)



S9

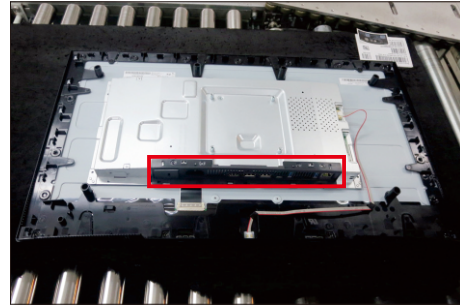
Use a Philips-head screwdriver to remove 13pcs screws for unlocking the middle frame with the panel.

(No.1~13 screw size=M3x4, Torque=5±1kgfxcM)



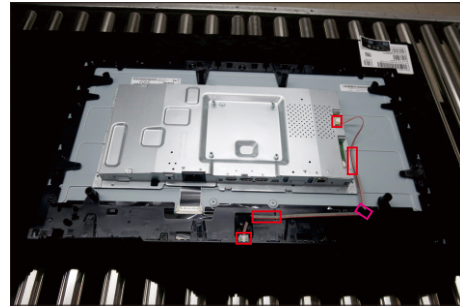
S10

Release the IO cover from the hooks of the main bracket chassis and put it aside.



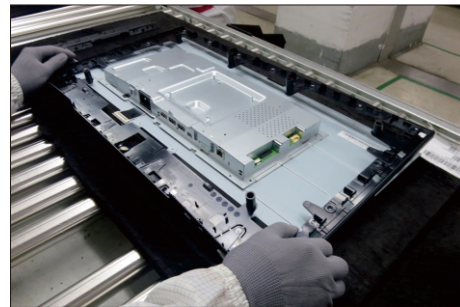
S11

Disconnect the panel lamp cable from the connectors of the panel and interface board, then tear off the tapes and release the lamp cable from the hook of middle frame.



S12

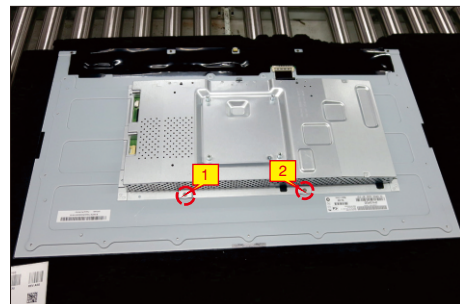
Lift up the middle frame away from the panel module and put it aside.



S13

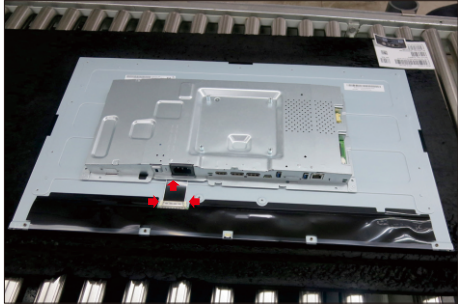
Use a Philips-head screwdriver to remove 2pcs screws for unlocking the bracket chassis with the panel.

(No.1~2 Screw size= M3x3, Torque=5±1kgfxcM)



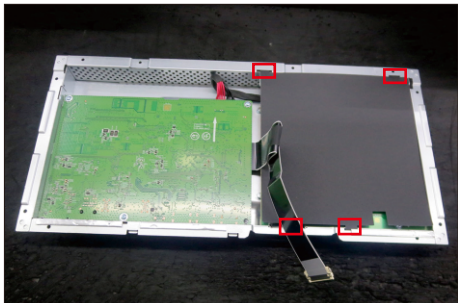
S14

Push the earing -locks and disconnect the LVDS cable from the connector of the panel module, then lift up and take away the bracket chassis module and then put it on a cushion for later disassembling.



S15

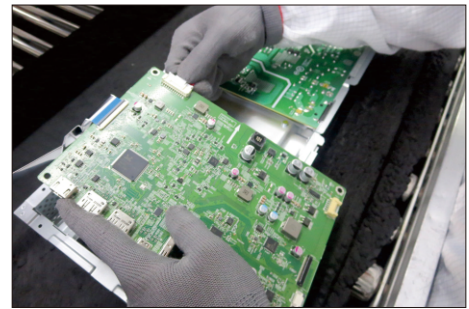
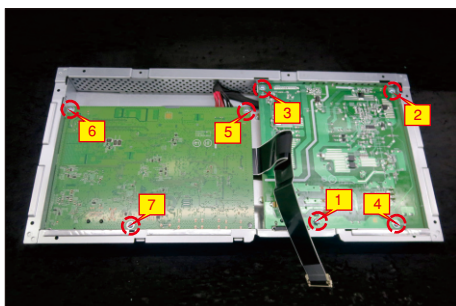
Remove the black Mylar sheet from the hooks of the main bracket as the picture below shown.



S16

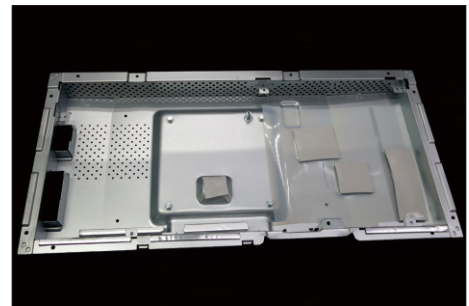
Use a Philips-head screwdriver to remove 5pcs screws for unlocking the power board and interface board, and then release all the cables from the hooks.

(No.1~4 screw size=M3x6, Torque=5±1kgfxcM;  
No.5 screw size=M4x8, Torque=5±1kgfxcM)



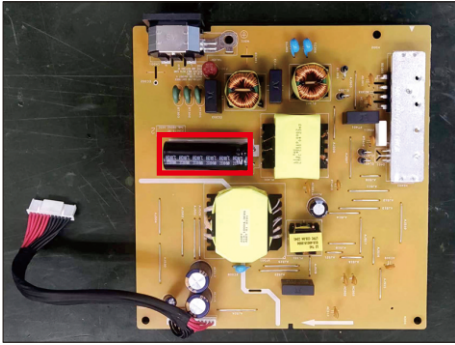
S17

Remove the interface board and power board from the bracket chassis module carefully, and disconnect all the cables.

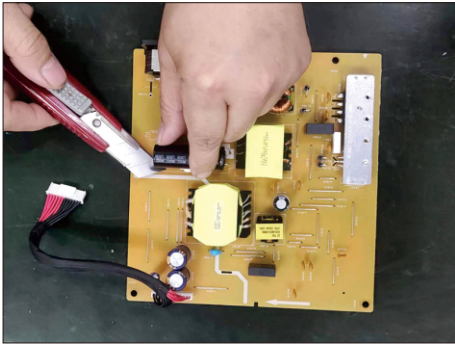


S18

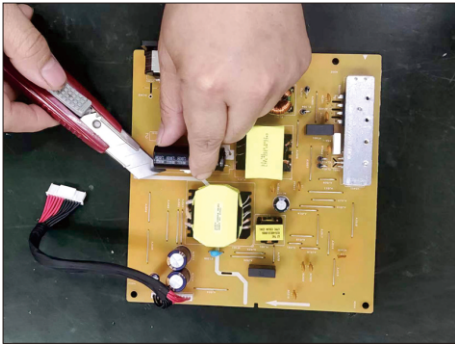
Remove electrolyte capacitors (red mark) from printed circuit boards.



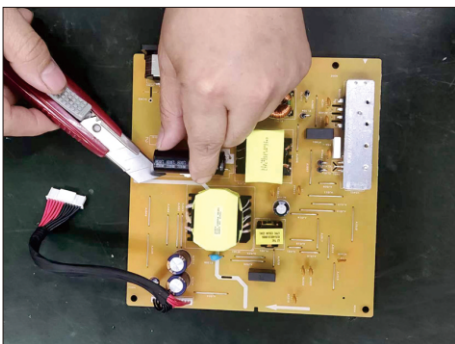
S18-1 Cut the glue between bulk cap. and PCB with a knife.



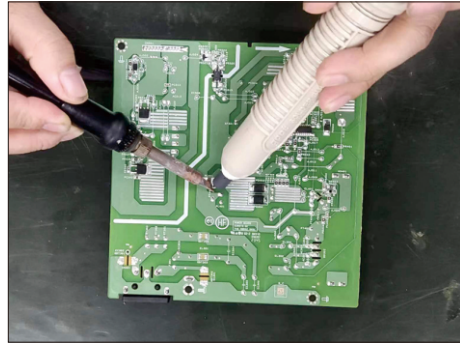
S18-2 Ensure cutting path within the glue, don't touch bulk cap. or PCB.



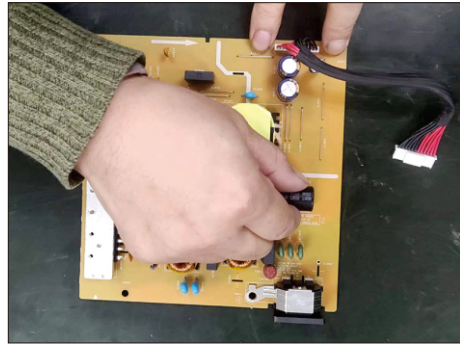
S18-3 Cut into the bottom of bulk cap. and pullit up carefully.



S18-4 Take out bulk cap. pin solder with soldering iron and absorber.



S18-5 Lift the bulk cap. up and away from the PCB.



## 2. Product material information

The following substances, preparations, or components should be disposed of or recovered separately from other WEEE in compliance with Article 4 of EU Council Directive 75/442/EEC.

Capacitors / condensers (containing PCB/PCT)	No used
Mercury containing components	No used
Batteries	No used
Printed circuit boards (with a surface greater than 10 square cm)	Product has printed circuit boards (with a surface greater than 10 square cm)
Component contain toner, ink and liquids	No used
Plastic containing BFR	No used
Component and waste contain asbestos	No used
CRT	No used
Component contain CFC, HCFC, HFC and HC	No used
Gas discharge lamps	No used
LCD display > 100 cm <sup>2</sup>	Product has an LCD greater than 100 cm <sup>2</sup>
External electric cable	Product has external cables
Component contain refractory ceramic fibers	No used
Component contain radio-active substances	No used
Electrolyte capacitors (height > 25mm, diameter > 25mm)	Product has electrolyte capacitors (height > 25mm, diameter > 25mm)

## 3. Tools Required

List the type and size of the tools that would typically can be used to disassemble the product to a point where components and materials requiring selective treatment can be removed.

Tool Description:

- Screwdriver (Phillip head) #1
- Screwdriver (Phillip head) #2
- Penknife
- Soldering iron and absorber