

1. Disassembly Procedures

S1 Turn off the monitor.

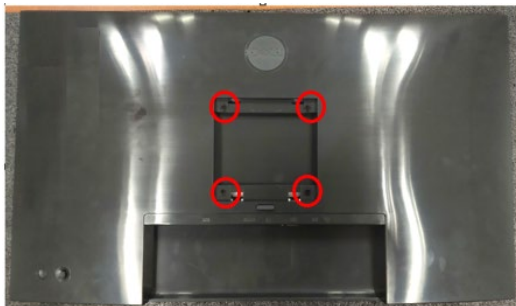
S2 Place the monitor on a soft cloth or cushion

Press and hold the stand release button at the back of the display

Lift the stand assembly up and away from the monitor

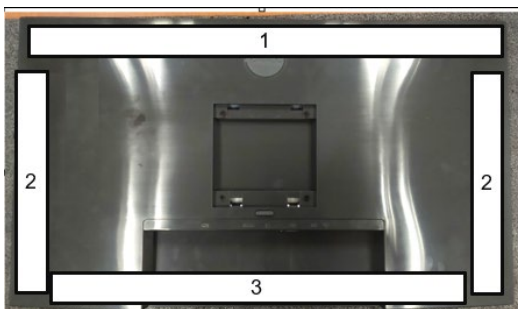


S3 Unlock 4 screws on "Rear Cover"

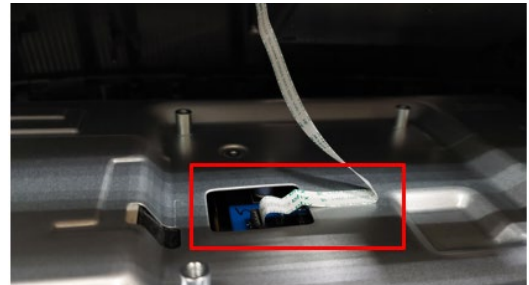


(Screw Torque: 9±1 kgf)

S4 Use hands or "Bar Scraper" to disassemble "Rear Cover" from "Middle Frame" according to the sequence shown in the picture

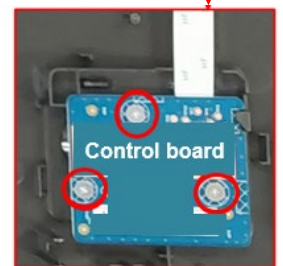
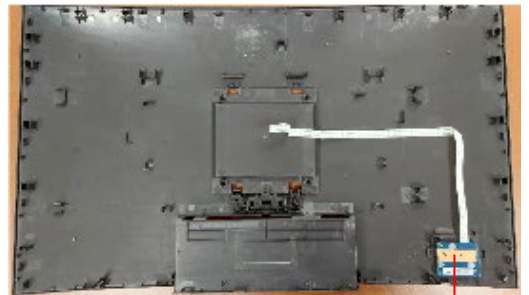


S5 Pull out "Control board FFC" from "Interface board" and tear off it from Main Shielding to take off "Rear Cover"



S6 Unlock 3 screws to disassemble "Control board" from "Rear Cover"

Tear off "Control board FFC" from "Rear Cover" and take off "Control board" from "Rear Cover"



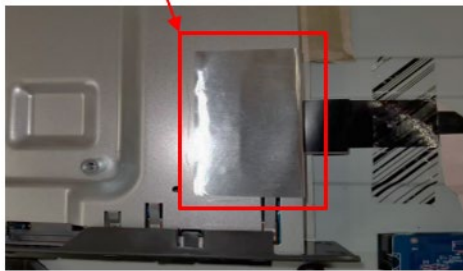
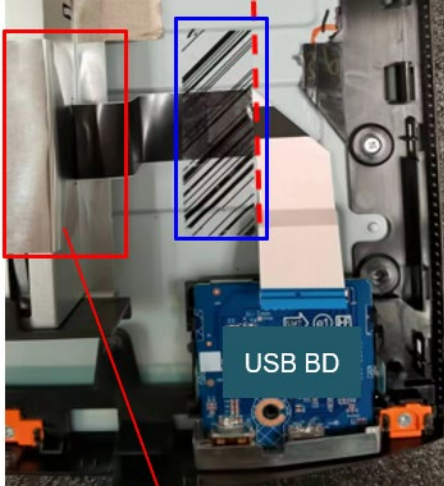
(Screw Torque: 1.6-1.8 kgf)

S7 Disassemble "Control board FFC" from "Control board"



S8 Tear off an aluminum foil mylar from “Main Shielding”

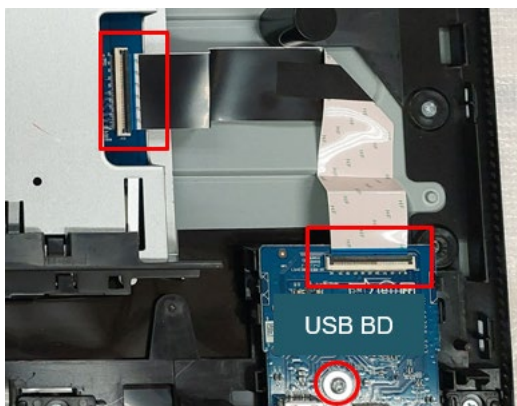
Tear off a black tape from “USB board FFC” and “Panel”



S9 Disassemble “USB board FFC” from “USB board” and “Interface board”

Unlock 1 screw on “USB board”

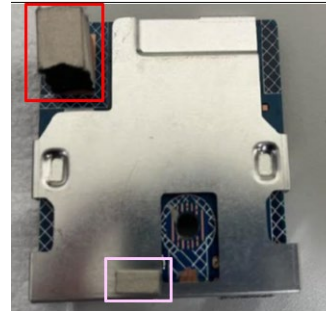
Disassemble “USB board” from “Middle Frame”



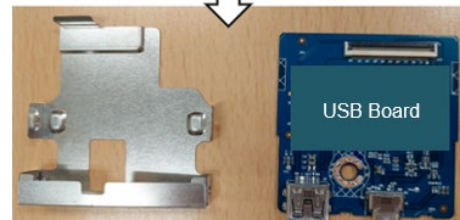
(Screw Torque: 4.5±0.5 kgf)

S10 Tear off a gasket from “USB Shielding” (see pink mark)

Tear off a gasket from “USB board” (see red mark)

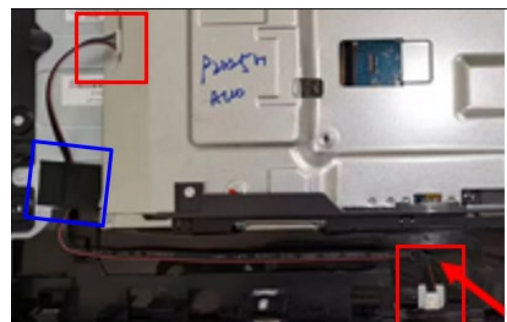


S11 Disassemble “USB board” from “USB Shielding”



S12 Tear off a tape from “Backlight wire” on “Panel”

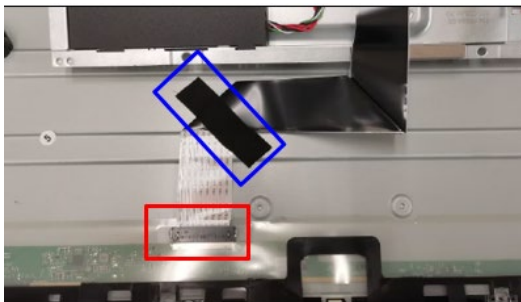
Unplug “Backlight wire” from “Panel” and “Power Board”



- S13** Tear off 3 conductive tapes from “Main Shielding and “Panel”

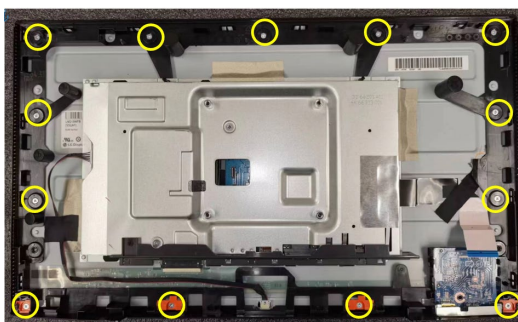


- S14** Tear off a long tape from “LVDS FFC”
Disassemble “LVDS FFC” from “Panel”
Take off “Main Shielding” from “Panel”



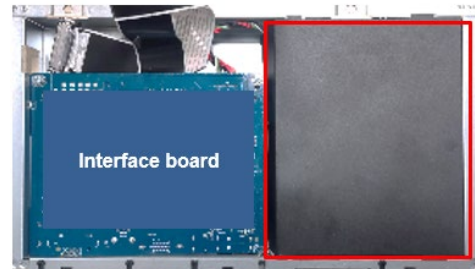
- S15** Unlock 13 screws to disassemble “Middle Frame” from “Panel”

Take off “Middle Frame” from “Panel”

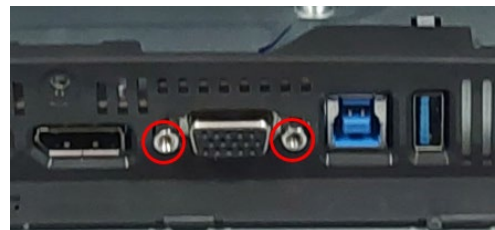


(Screw Torque: 4.5-5.0 kgf)

- S16** Disassemble “MYLAR” from “Main Shielding”

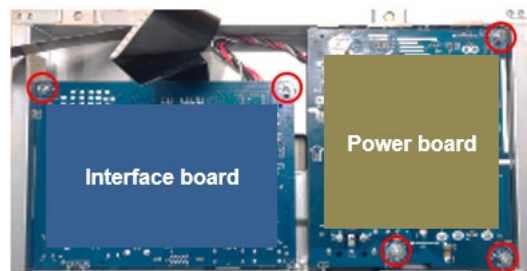


- S17** Unlock 2 hexagonal screws



(Screw Torque: 5.0±0.6 kgf)

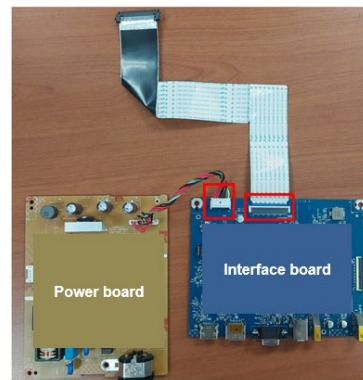
- S18** Unlock 5 PCBA screws



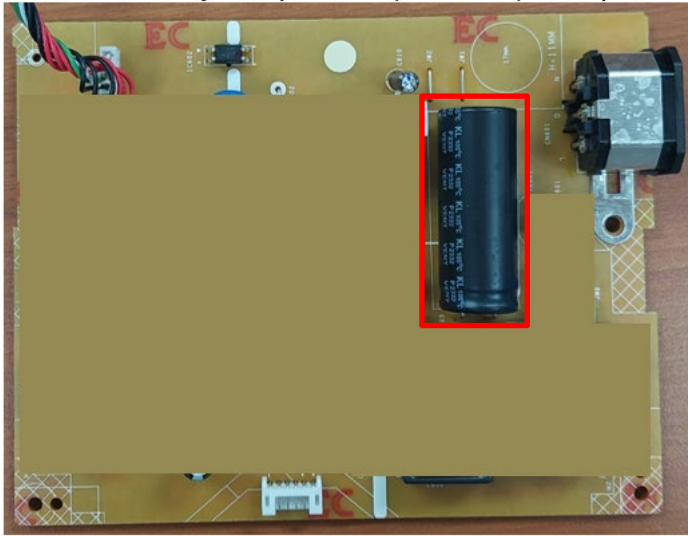
(Screw Torque: 9±1 kgf)

- S19** Disassemble “Interface board” and “Power board” from “Main Shielding”

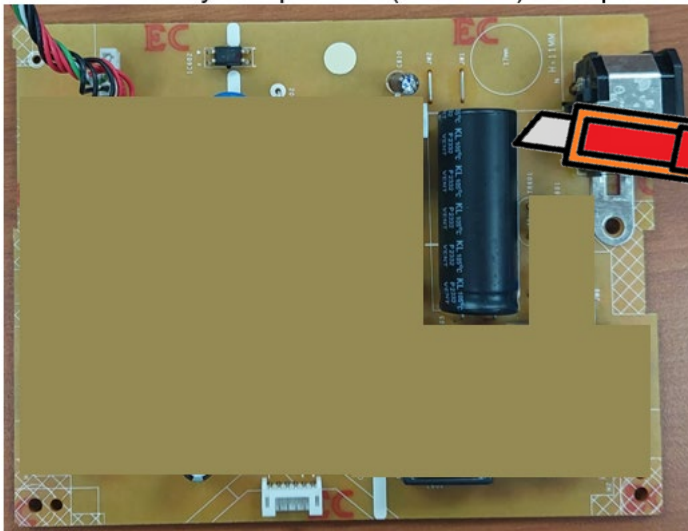
Unplug all cables from “Interface board”



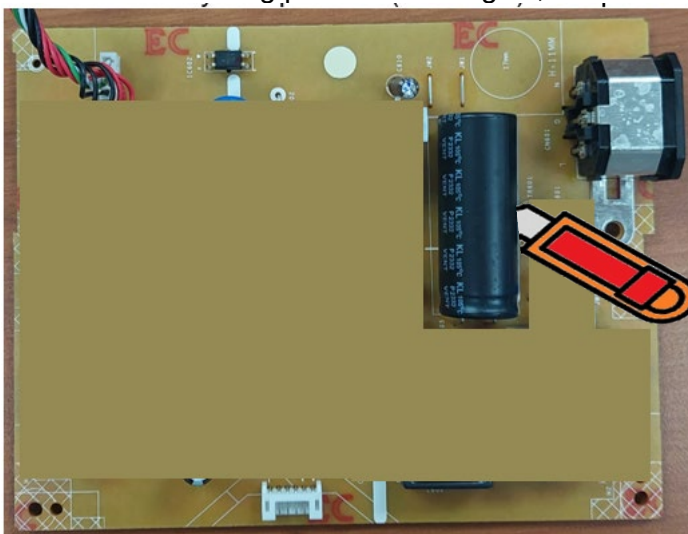
S20 Remove electrolyte capacitors (red mark) from printed circuit boards



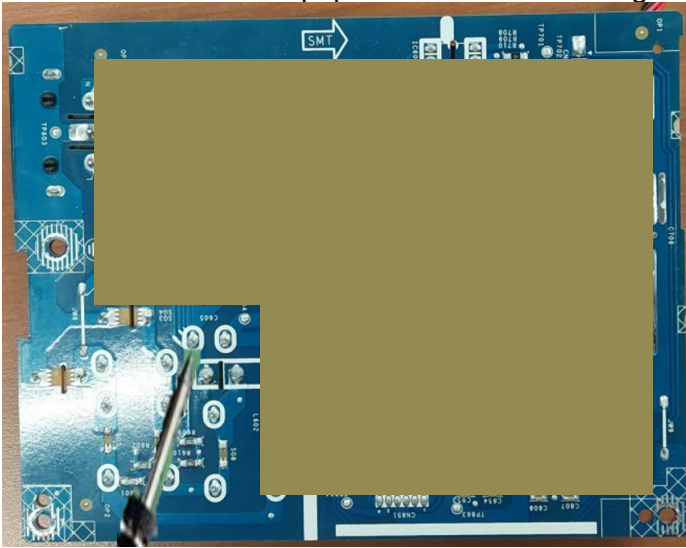
S20-1 Cut the glue between bulk cap. and PCB with a knife



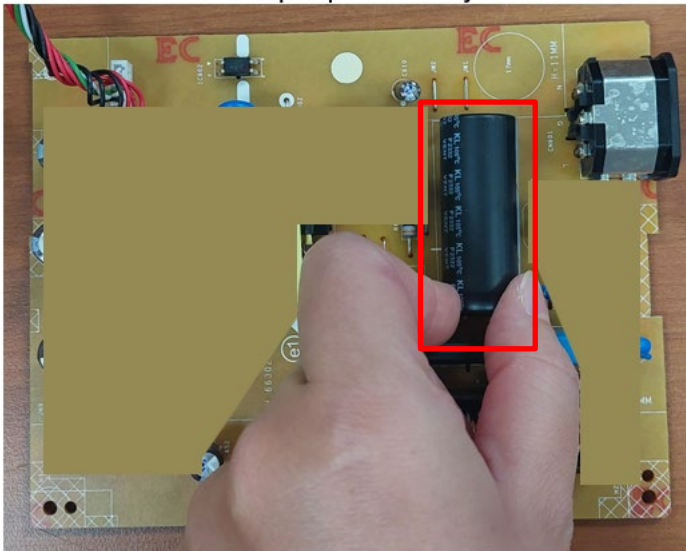
S20-2 Ensure cutting path within the glue, don't touch bulk cap. or PCB



S20-3 Take out bulk cap. pin solder with soldering iron and absorber



S20-4 Lift the bulk cap. up and away from the PCB



2. Product material information

The following substances, preparations, or components should be disposed of or recovered separately from other WEEE in compliance with Article 4 of EU Council Directive 75/442/EEC.

| | |
|-------------------------------------------------------------------|-------------------------------------------------------------------------------|
| Capacitors / condensers (containing PCB/PCT) | No used |
| Mercury containing components | No used |
| Batteries | No used |
| Printed circuit boards (with a surface greater than 10 square cm) | Product has printed circuit boards (with a surface greater than 10 square cm) |
| Component contain toner, ink and liquids | No used |
| Plastic containing BFR | No used |
| Component and waste contain asbestos | No used |
| CRT | No used |
| Component contain CFC, HCFC, HFC and HC | No used |
| Gas discharge lamps | No used |
| LCD display > 100 cm ² | Product has an LCD greater than 100 cm ² |
| External electric cable | Product has external cables |
| Component contain refractory ceramic fibers | No used |
| Component contain radio-active substances | No used |
| Electrolyte capacitors (height > 25mm, diameter > 25mm) | Product has electrolyte capacitors (height >25mm, diameter > 25mm) |

3. Tools Required

List the type and size of the tools that would typically can be used to disassemble the product to a point where components and materials requiring selective treatment can be removed.

Tool Description:

- Screwdriver
- Scraper Bar
- Penknife
- Soldering iron and absorber