



Wi-Fi 7

BE19000

Tri-Band Wi-Fi 7 Gaming Router

Redefining Wi-Fi Routers



Archer GE800

Two 10G Ports
for Blazing-Fast Connectivity

Unprecedented Speeds
up to 19 Gbps^{†*}

Highlights

Wi-Fi 7 — Wi-Fi Like Never Before

Own the Fast Lane with a Dedicated Gaming Band

Keep your game on track with the dedicated gaming band freeing you from competing with your family's Netflix 4K streaming. With a 20% faster gaming band than a Wi-Fi 6 gaming router, it's always your turn on the network.[□]

6 GHz  11520 Mbps

GAMING BAND
5 GHz  5760 Mbps 

2.4 GHz  1376 Mbps



Command an Army of Devices

The powerful quad-core processor with 2 GB RAM handles massive throughput to numerous devices, eliminating buffering and maximizing entertainment. Get your crew together for the smoothest LAN party you've ever experienced.



Game at Warp Speed with Wi-Fi 7

Experience online gaming like never before with Multi-Link Operation (MLO) technology using all the 6 GHz, 5 GHz, and 2.4 GHz bands simultaneously for blazing-fast Wi-Fi throughput up to 19 Gbps.^{‡Δ*}



Lightning Attack to Demolish Latency

Never worry about latency again with a 4× reduction compared to Wi-Fi 6/6E routers. Take advantage of incredibly low latency to demolish your opponents.[☆]

Highlights



8× Pre-Optimized Antennas

Quad-Core CPU

One-Click Acceleration Button

10 Gbps
WAN/LAN Port

10 Gbps
SFP+/RJ45 WAN/LAN Combo Port

USB 3.0 Port

4× 2.5 Gbps LAN Ports
(5 Gbps Aggregated Speed)

Two 10G Ports for Blazing-Fast Connectivity

Archer GE800 comes equipped with two 10 Gbps WAN/LAN ports. Leverage your ISP's ultra-fast speeds, or utilize 10G LAN to deliver up to 10× faster data-transfer speeds, providing gaming laptops with lightning-fast connectivity to conquer any game.[§]

Obliterate Dead Zones

Enjoy uninterrupted gaming in every corner of your home with 8× optimally positioned antennas, proprietary Wi-Fi optimization, and Beamforming technology. Turn every corner into your personal gaming arena.

Highlights



Prioritize Game Applications with QoS

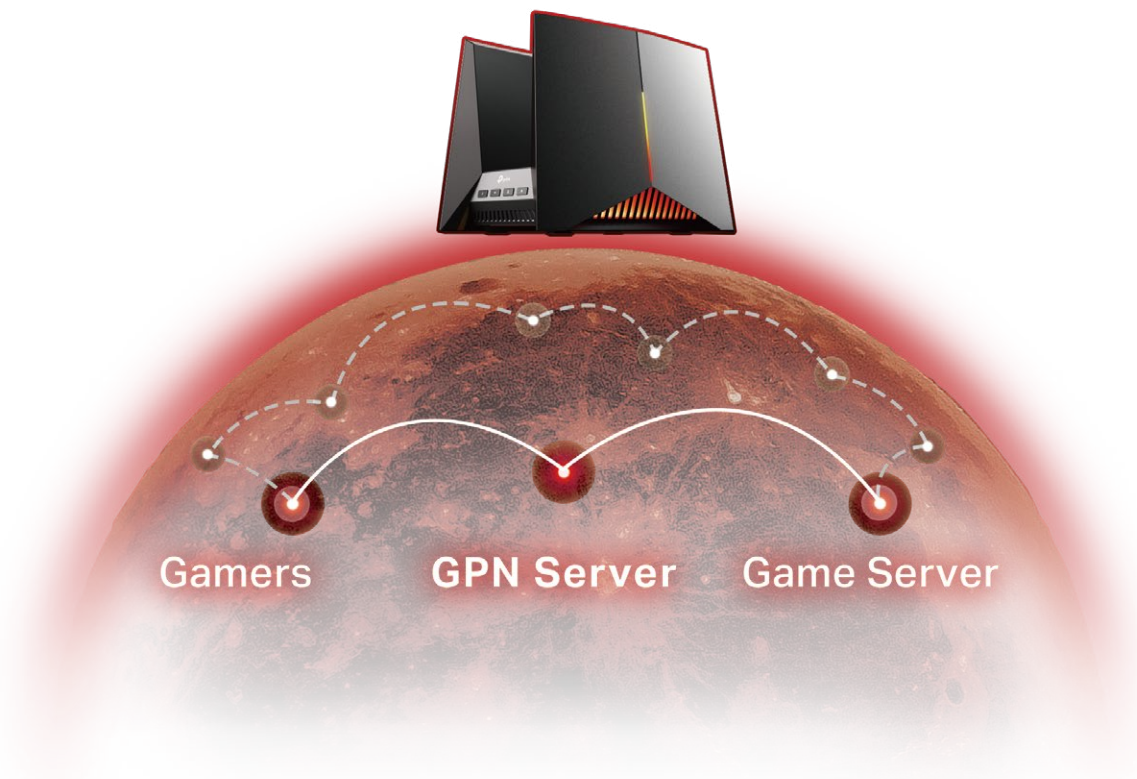
Automatically detects and optimizes gaming streams to accelerate your game applications to run at high speeds, even on a crowded network.



Prioritize Game Devices with the Gaming Port

Automatically prioritizes your game device traffic, letting you focus on play, not battling for bandwidth.

Highlights



Game Server Acceleration by GPN

Slash your game ping and packet loss with GPN (Gamers Private Network). A shorter path from gamers to game servers driven by real-time measurements and AI is your secret weapon for winning.



Mobile Game Acceleration

Minimize lag and latency for mobile gaming during network congestion to give yourself the edge whether you're playing solo or on a team.

Features



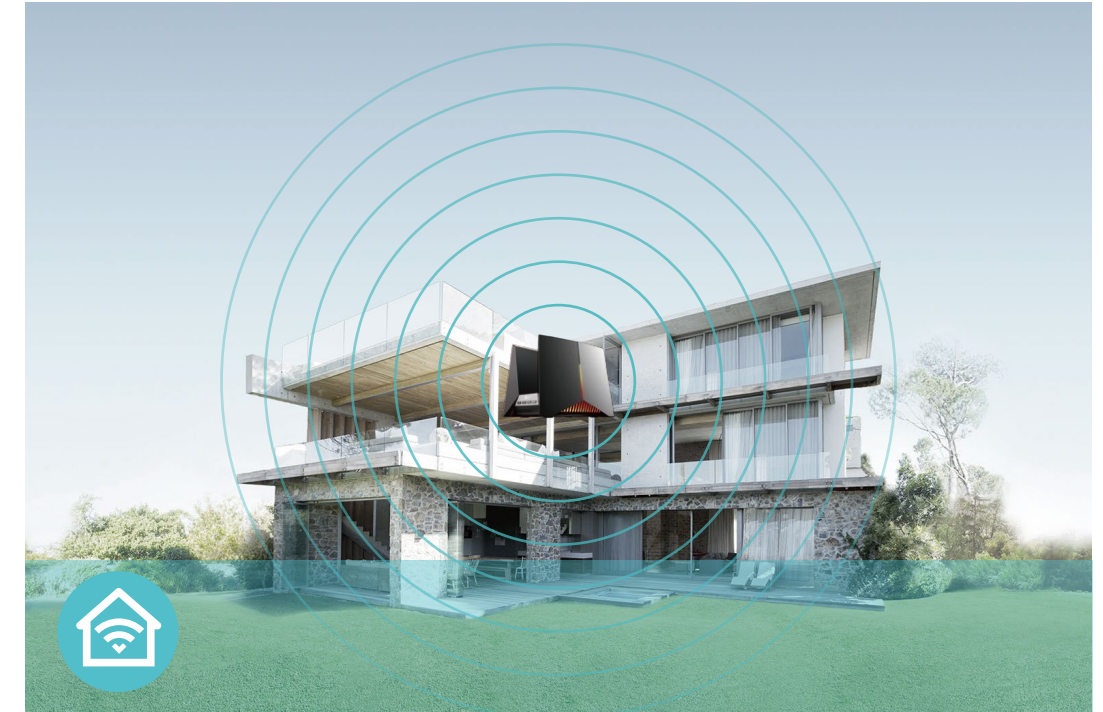
Ultra-Fast Speed

- **Warp-Speed BE19000 Wi-Fi** – Up to 19 Gbps tri-band Wi-Fi 7 enables gaming, streaming and high-speed downloading on multiple devices—all at the same time.†
- **Two 10G Ports** – 1× 10 Gbps WAN/LAN port + 4× 2.5 Gbps LAN ports + 1× 10 Gbps SFP+/RJ45 WAN/LAN Combo Port +1× USB 3.0 ports ensure max flexibility and boosted throughput.
- **Greenfield 6 GHz Band** – Provides robust high-speed connections with a brand-new expansive and congestion-free band.
- **Wi-Fi 7** – Wi-Fi 7 (802.11be) features advanced technologies, including 320MHz channels and 4K QAM, drastically increasing the speed and efficiency of your entire network.‡
- **Smart Connect** – Intelligently assigns each device to the best Wi-Fi band for optimal performance.



High Capacity and Reliable Connections

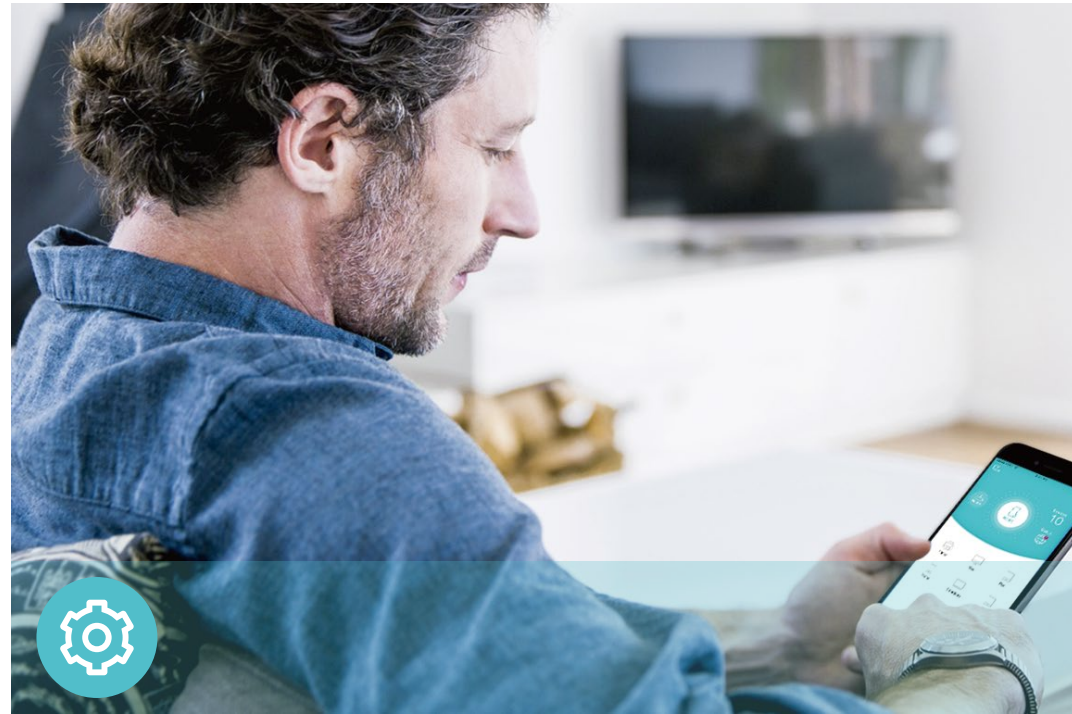
- **Maximized Capacity** – Communicates with multiple devices via 12 streams and tri-band simultaneously. Combined with OFDMA and MU-MIMO, 12 streams won't affect your online gaming.‡
- **19 Gbps Tri-Band WiFi 7** – Enables your devices to run at full speed. Enjoy fluent 4K/8K streaming, immersive AR/VR gaming, and lightning-fast downloads.†‡
- **Airtime Fairness** – Balances bandwidth of connected devices to improve overall throughput and efficiency.



Broad Wi-Fi Range

- **Maximized Coverage** – Proprietary WiFi optimization and 8× optimally positioned antennas along with Beamforming deliver more capacity, stronger and more reliable connections, and less interference.
- **Beamforming Technology** – Concentrates Wi-Fi signals towards individual devices to ensure stronger connections.
- **Seamless EasyMesh network** – Transfer between seamless whole-home Wi-Fi without any drops or lag and manage your whole network using a centralized panel.

Features



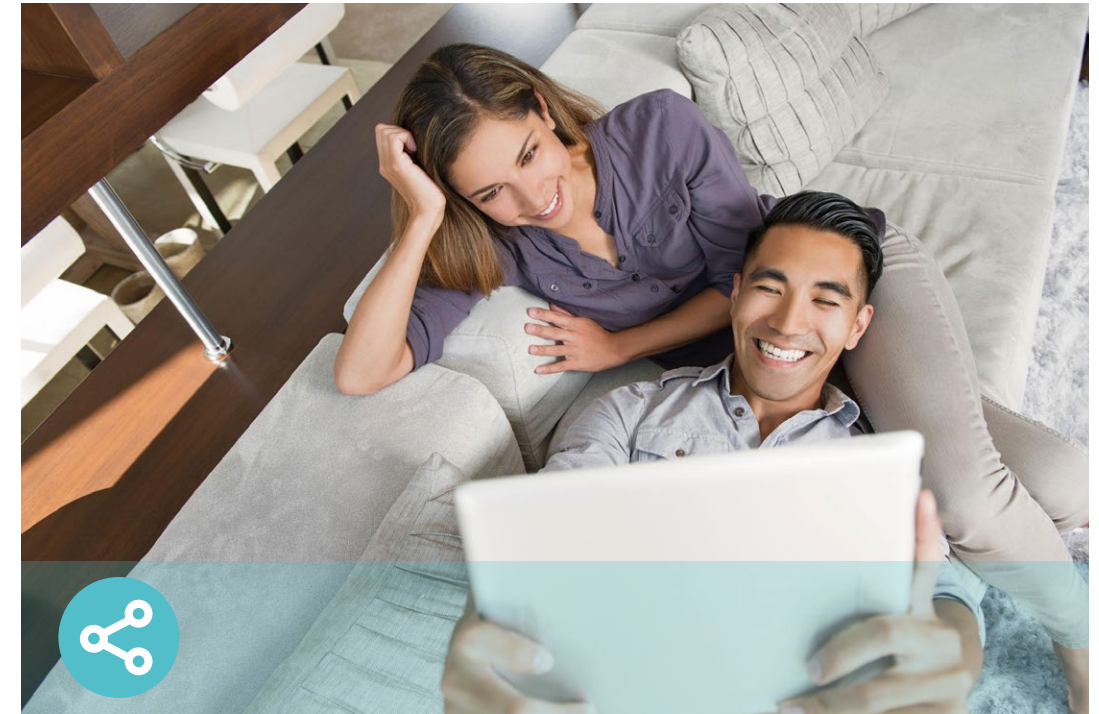
Ease of Use

- Hassle-free Management with Tether App – Network management is made easy with the TP-Link Tether app, available on any Android and iOS device.
- Intuitive Web UI – Ensures quick and simple installation without hassle.
- WPS (Wi-Fi Protected Setup) – Help you to quickly and securely connect your devices to the router's network with a tap.
- Backwards Compatible – Take your Wi-Fi to the next level while being backwards compatible with existing 802.11 a/b/g/n/ac/ax Wi-Fi standards.
- Works with Amazon Alexa and Google Assistant – Utilize Amazon Alexa and Google Assistant to control everything via voice commands to enjoy truly intelligent life.



Robust Security

- HomeShield – TP-Link's premium security services keep your home network safe with cutting-edge features for network and IoT protection.*
- Parental Controls – Manage online time and block inappropriate content to control your family's digital habits.
- Guest Network – Provides separate access for guests to secure the home network.
- Advanced WPA3 Encryptions – The latest WiFi security protocol, WPA3, brings new capabilities to improve cybersecurity in personal networks.**
- Access Control – Establishes a whitelist or blacklist to allow or restrict certain devices to access the internet.



Value-Added Features

- VPN Clients and Server Supported – With VPN client support, GE800 allows specified devices in your home network to access remote VPN servers without needing to install VPN software on every device.
- USB Ports – Connect external storage devices to rapidly share files, photos, and videos.
- Built-in Media Server – Allows you to play music, watch videos and view photos from any device on your network.
- More Values – Advanced functions like IPTV, IPv6 compatibility, and Access Point mode bring more values.

Specifications

Wireless

- **Standards:** IEEE 802.11be/ax 6 GHz, IEEE 802.11be/ax/ac/n/a 5 GHz, IEEE 802.11be/ax/n/g/b 2.4 GHz
- **WiFi Speeds:** 6 GHz: 11520 Mbps (802.11be), 5 GHz: 5760 Mbps (802.11be), 2.4 GHz: 1376 Mbps (802.11be)†
- **WiFi Range:** 8× High-Performance Antennas with Optimized Layout
- **WiFi 7 Features:** Multi-Link Operation (MLO), 320 MHz Bandwidth, 4K-QAM, and Multi-RUs[‡]
- **Working Modes:** Router Mode, Access Point Mode

Hardware

- **Ethernet Ports:** 1× 10 Gbps SFP+/RJ45 Combo WAN/LAN Port, 1× 10 Gbps WAN/LAN Port, 4× 2.5 Gbps LAN Ports
- **USB Support:** 1× USB 3.0 Port[§]
- **Buttons:** Power On/Off Button, Reset Button, WPS Button, Wi-Fi Button, LED Button, One-click Acceleration Button
- **Antennas:** 8× High-Performance Antennas with Optimized Layout

Physical

- **Dimensions:** 11.5 × 8.1 × 8.8 in (292 × 207 × 224 mm)
- **Package Contents:**
 - Wi-Fi Gaming Router Archer GE800
 - Power Adapter
 - RJ45 Ethernet Cable
 - Quick Installation Guide
 - Reset Tool

Security

- **WiFi Encryption:** WPA, WPA2, WPA3, WPA/WPA2-Enterprise (802.1x)
- **Network Security:** SPI Firewall, Access Control, IP & MAC Binding, Application Layer Gateway, HomeShield Security
- **Guest Network:** 6 GHz Guest Network, 5GHz Guest Network, 2.4 GHz Guest Network
- **VPN Server:** OpenVPN, PPTP, L2TP VPN Server, Wireguard VPN
- **VPN Client:** OpenVPN, PPTP, L2TP VPN Client, Wireguard VPN

Software

- **Protocols:** IPv4, IPv6
- **Service Kits:** HomeShield
- **EasyMesh:** Supported
- **Parental Controls:** HomeShield Parental Controls
- **WAN Types:** Dynamic IP, Static IP, PPPoE, PPTP, L2TP
- **Quality of Service:** QoS by Device
- **Cloud Service:** Auto Firmware Upgrade, TP-Link ID, DDNS
- **NAT Forwarding:** Port Forwarding, Port Triggering, DMZ, UPnP
- **DDNS:** TP-Link, NO-IP, DynDNS
- **Gaming Features:** Game Statistics, Game Port Forwarding, Game Panel (Network Status, Router Performance, RGB settings, Accelerated Games and Gears)
- **Gaming Acceleration:** Accelerate Game Applications with QoS, Accelerate Game Devices with the Gaming Port, Game Server Acceleration by GPN, Accelerate Mobile Games, One-Click Acceleration Button

Specifications

Test Data

- WiFi Transmission Power:

CE: ≤ 20 dBm (2.4 GHz), ≤ 30 dBm (5 GHz), ≤ 23 dBm EIRP (6GHz)

FCC: ≤ 30 dBm (2.4 GHz), ≤ 30 dBm (5 GHz), ≤ 30 dBm EIRP (6GHz)

- WiFi Reception Sensitivity:

2.4 GHz:

11ax HE20 MCS0:-96dBm, 11ax HE20 MCS11:-68dBm

11ax HE40 MCS0:-93dBm, 11ax HE40 MCS11:-65dBm

11be EHT20 MCS13:-62dBm, 11be EHT40 MCS13:-58dBm

5 GHz:

11ax HE20 MCS0:-95dBm, 11ax HE20 MCS11:-66dBm

11ax HE40 MCS0:-93dBm, 11ax HE40 MCS11:-64dBm

11ax HE80 MCS0:-89dBm, 11ax HE80 MCS11:-61dBm

11ax HE160 MCS0:-85dBm, 11ax HE160 MCS11:-58dBm

11be EHT20 MCS13:-59dBm, 11be EHT40 MCS13:-57dBm

11be EHT80 MCS13:-55dBm, 11be EHT160 MCS13:-52dBm

6 GHz:

11ax HE20 MCS0:-95dBm, 11ax HE20 MCS11:-65dBm

11ax HE40 MCS0:-93dBm, 11ax HE40 MCS11:-63dBm

11ax HE80 MCS0:-90dBm, 11ax HE80 MCS11:-60dBm

11ax HE160 MCS0:-87dBm, 11ax HE160 MCS11:-58dBm

11be EHT20 MCS13:-60dBm, 11be EHT40 MCS13:-58dBm

11be EHT80 MCS13:-54dBm, 11be EHT160 MCS13:-52dBm

11be EHT320 MCS13:-48dBm

Other

- System Requirements:

Edge, Firefox, Chrome, Safari, or other JavaScript-enabled browser

*You are recommended to use the latest version

Cable or DSL Modem (if needed)

Subscription with an internet service provider (for internet access)

- Certifications: CE, FCC, RoHS

- Environment:

Operating Temperature: 0°C ~ 40°C (32°F ~ 104°F)

Operating Humidity: 10%~90% non-condensing



For more information, please visit

https://www.tp-link.com/products/details/?model=Archer+GE800_V1

or scan the QR code left

Attention: This device may only be used indoors in all EU member states, EFTA countries, and Northern Ireland.

Attention: This device may only be used indoors in Great Britain.

This device complies with part 15 of the FCC Rules. Operation is subject to the following two conditions: (1) This device may not cause harmful interference, and (2) this device must accept any interference received, including interference that may cause undesired operation.

Specifications are subject to change without notice. All the brands and product names are trademarks or registered trademarks of their respective holders.

¹Maximum wireless signal rates are the physical rates derived from IEEE Standard 802.11 specifications. Actual wireless data throughput, wireless coverage, and number of connected devices are not guaranteed and will vary as a result of internet service provider factors, network conditions, client limitations, and environmental factors, including building materials, obstacles, volume and density of traffic, and client location.

²Use of Wi-Fi 7 (802.11be), Wi-Fi 6 (802.11ax), and features including Multi-Link Operation (MLO), 320 MHz Bandwidth, 4K-QAM, Multi-RUs, OFDMA, and MU-MIMO requires clients to also support the corresponding features.

³The 320 MHz bandwidth is only available on the 6 GHz band. Simultaneously, the 320 MHz bandwidth on the 6 GHz band and 160 MHz bandwidth on the 5 GHz band may be unavailable in some regions/countries due to regulatory restrictions. Double channel width and speed refer to 320 MHz compared to 160 MHz for Wi-Fi 6 routers.

⁴10 Gbps internet speeds require compatible service plans and equipment. The two 10 Gbps ports cannot be concurrently configured as WAN ports.

⁵19 Gbps Wi-Fi speed refers to the theoretical speeds of Wi-Fi 7 clients when connected to Archer GE800. Wi-Fi 7 clients need to support Multi-Link Operation (MLO) and the 6 GHz band to reach up to 19 Gbps when connected to Archer GE800's 2.4 GHz, 5 GHz, and 6 GHz bands simultaneously.

⁶4x lower latency refers to the latency improvement of Wi-Fi 7 routers compared to Wi-Fi 6/6E routers, based on laboratory test data. The test conditions had the same 5 GHz or 6 GHz single-frequency wireless interference and tested the maximum latencies of Wi-Fi 7 clients (with MLO turned on) connecting to the 5 GHz and 6 GHz bands of Archer GE800 (with MLO turned on) simultaneously and to the 5 GHz or 6 GHz bands of a Wi-Fi 6/6E router (without the MLO function).

⁷20% faster and 2.7x faster Wi-Fi speed refers to the speed increase when the device is connected to Archer GE800's 5 GHz gaming band, compared to Wi-Fi 6 routers and Wi-Fi 5 routers, respectively, based on laboratory test data. The region/country where the device is located needs to support the 5 GHz band, reaching up to 5760 Mbps when connected to the 5 GHz gaming band of Archer GE800. Wi-Fi 6 and Wi-Fi 5 gaming routers may only provide 4804 Mbps and 2167 Mbps on the gaming band, respectively.

⁸HomeShield includes the Free Basic Plan. Fees apply for the Pro Plan. Visit [tp-link.com/homeshield](https://www.tp-link.com/homeshield) for more information.

⁹Use of WPA3 requires clients to also support the corresponding feature.

¹⁰Wi-Fi generations represent the wireless standard IEEE 802.11a/b/g/n/ac/ax/be. All devices need to support 802.11 Wi-Fi protocols.

¹¹A separate modem or gateway may be required. PPPoE, Static IP, and Dynamic IP are supported. PPTP and L2TP may also be supported under certain configurations.

Actual network speed may be limited by the rate of the product's Ethernet WAN or LAN port, the rate supported by the network cable, internet service provider factors, and other environmental conditions.

TP-Link EasyMesh-compatible products can network with other devices that use EasyMesh. Failed connections may be due to firmware conflicts of different vendors. The EasyMesh-compatible function is still being developed on some models and will be supported in subsequent software updates.

This router may not support all the mandatory features as ratified in the IEEE 802.11be specification.

Further software upgrades for feature availability may be required.

Copyright © 2023