

msi



Cubi N ADL S

Business & Productivity PC

Infokit V1.0

msi



Cubi N ADL S

Business & Productivity PC

Cubi N ADL S - Feature Overview




Small Size
0.66 Liter




Fanless Design

4K UHD
3840 x 2160


4K UHD Support



Matrix Display




Dual LAN




dTPM 2.0 Module



24/7 Qualified Reliability



MSI Cloud Center



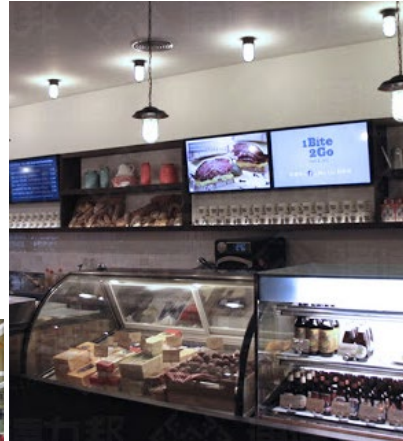
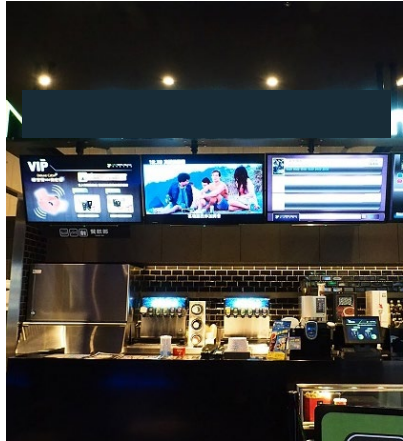
MSI Center



VESA Mountable & External Power Switch (Optional)



Ready For Various Scenarios



Our unwavering focus is to enhance efficiency, stability, and flexibility for our users in every conceivable situation. We strive to provide an unparalleled user experience that empowers you to accomplish your goals with ease and confidence.

Wavy Meshed Design

msi

Compact and versatile, this 0.66-liter mini PC is ideal for small workspaces, home entertainment sets, and a variety of industries.



THE CHANGED EDGE
Underestimate the power of the dark side

Cubi N ADL S

Efficient, Stable, and Energy-Saving Solution



Up to

Intel® Alder Lake
N200 Processor

Up to

16GB

DDR4 3200MHz

Support

Windows 11 Pro

A made-to-measure Cubi N mini desktop equipping Intel® Alder Lake N200 processor (Alder Lake) with built-in UHD Graphics, 4 cores, and 4 threads save more power and energy source while satisfying your usage requirements with only 6W TDP.

Fanless Design

The Fanless Design of Cubi N ADL S ensures that it operates silently, consumes less energy, and is resistant to dust accumulation. As a result, it experiences reduced downtime and enjoys an extended life cycle.



Up To 4K Resolution Support

msi

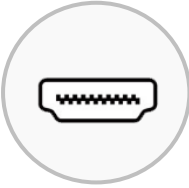
Cubi N ADL S allows you to enjoy the best experience of watching movie with your family or attending online conference call while working from home or learning professional tasks at home.



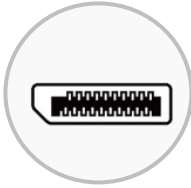
See More, Do More



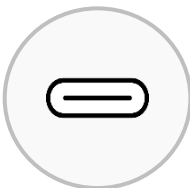
With HDMI, DP, and Type-C port, Cubi N allows you to extend to three monitors to preview your E-commerce content & data at home or in the office, enhancing your efficiency.



HDMI



DP



Type-C

Dual LAN Design



If one of the LAN ports fails, you can still access the network using the other port. Utilizing two LAN ports provides redundancy to the network connection, significantly enhancing data transfer reliability and availability.

More information about the Dual LAN:
<https://www.msi.com/blog/dual-lan-on-a-computer-what-is-it-and-what-are-the-benefits>

dTPM 2.0 Support



msi

dTPM 2.0 (Trusted Platform Module) technology is designed to provide hardware-based, security-related functions. You can store your sensitive data & passwords by encryption keys for advanced security.

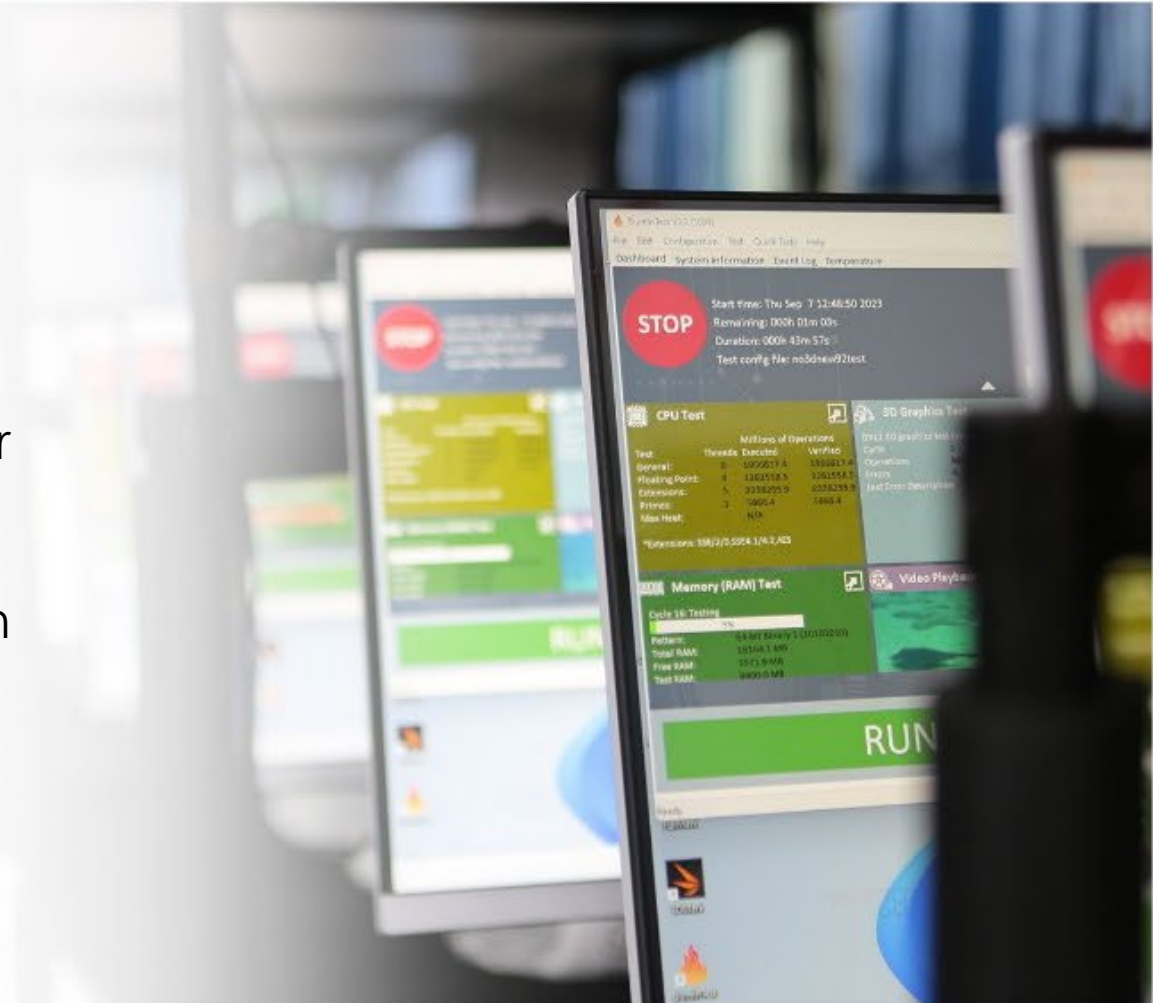


24 / 7 Qualified Reliability Test



Our relentless commitment to quality is reflected in our extensive reliability testing, which generates over 246,000 hours of MTBF (Mean Time Between Failures). We assure 24/7 reliability and availability, delivering an effortless user experience.

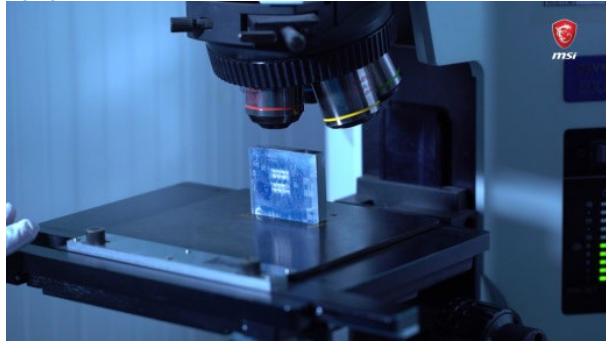
Quality is not just a buzzword for us, it's our top priority to deliver a hassle-free and high-quality product.



Intensive Quality testing



(1) PCBA test



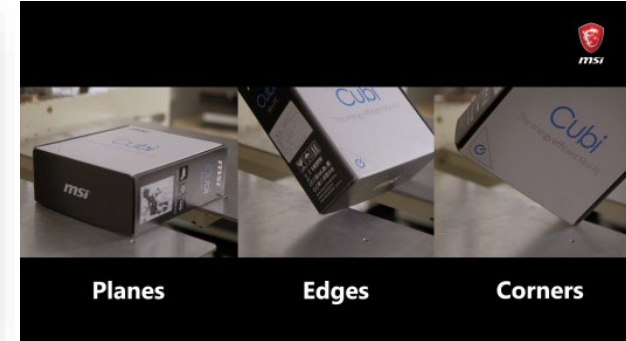
(2) Motherboard test



(3) Vibration test (X & Y Axis)



(4) Drop test



(5) Chamber test (Temp. & Humidity)



(6) Infrared (IR) test



(7) Acoustic test



(8) Signal test



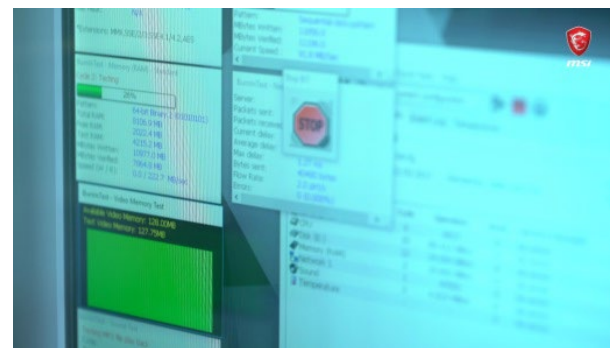
(9) I/O port life test



(10) Power test



(11) System performance test



Uncompromising Product Quality

msi

MSI products exemplify uncompromising quality.

Through strict adherence to the MIL-STD-1916 testing standard in our factory inspections, we consistently achieve excellence in performance, durability, precision, and reliability.

This commitment places MSI at the forefront, enabling us to consistently deliver outstanding designs to customers.

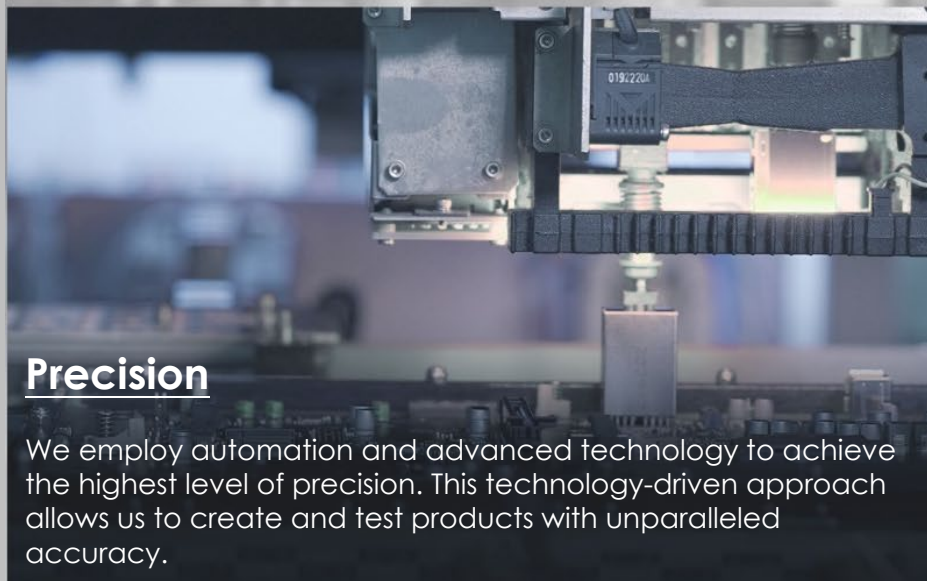
MSI modernized factory offering high-quality products Video:

<https://www.youtube.com/watch?v=ZvZ2G Pn7CMc>



Performance Assurance

MIL-STD-1916 testing guarantees MSI products meet high-performance standards, providing reliable and professional experiences with desktop PCs at their best.



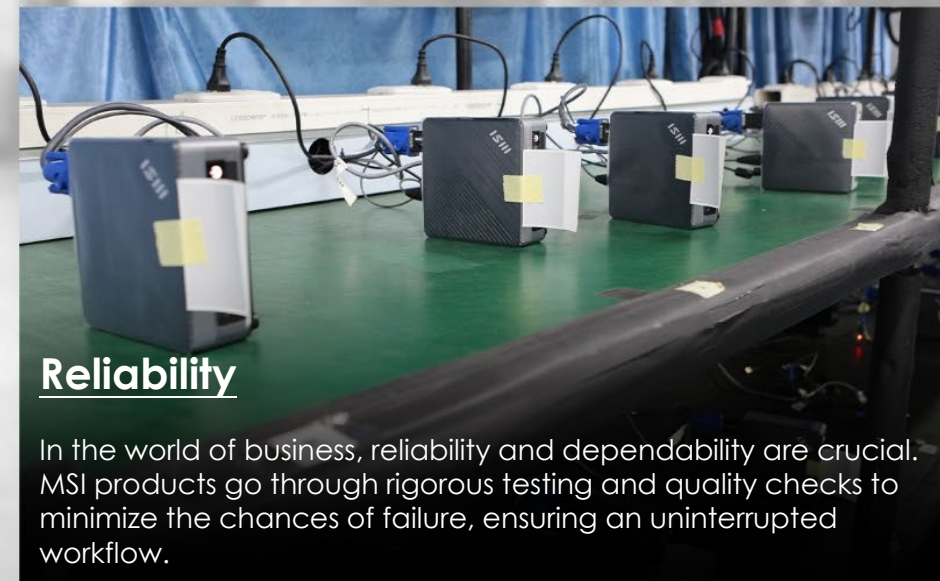
Precision

We employ automation and advanced technology to achieve the highest level of precision. This technology-driven approach allows us to create and test products with unparalleled accuracy.



Durability

MIL-STD-1916 testing ensures every component meets strict durability standards, making MSI products capable of lasting through extended gaming and work sessions while delivering reliable performance.



Reliability

In the world of business, reliability and dependability are crucial. MSI products go through rigorous testing and quality checks to minimize the chances of failure, ensuring an uninterrupted workflow.

USB 3.2 Gen 2 Type C & Type A



USB 3.2 TYPE-A
GEN 2 **TYPE-C**

With data transfer speeds up to 10Gbps, one USB 3.2 Gen 2 Type-C and two Type-A ports in the front I/O offer twice the bandwidth of the older USB 3.1 Gen 1 ports, effectively halving any data delay or waiting time.

Type C offers a universal solution for connecting devices with high-speed data transfer, display capabilities, and charging functionality.

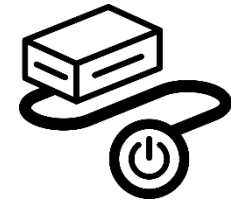
VESA Mountable Design

With its VESA Mountable design, the Cubi N can be easily installed in any location, providing users with greater flexibility and efficient space management in both home and office settings.



External Power Switch Support (Optional)

msi



Cubi N has been designed to support an external power switch, making it much easier to use. If you have placed your computer in a hard-to-reach area, this convenient switch on your desk will allow you to turn it on and off without having to bend down to reach it.



MSI Cloud Center

msi

Fast, Secure & Wireless Backup

Fast, secure, and wireless backup & download between your PC and mobile devices. Transfer files, photos, videos, and more between your PC, Android, and iOS device faster and easier than a cabled connection. You can make these files accessible to your family or team members or make files as private as you want. The decision is in your hands.

More information about the MSI Cloud Center:

<https://www.msi.com/Landing/MSI-Cloud-Center>

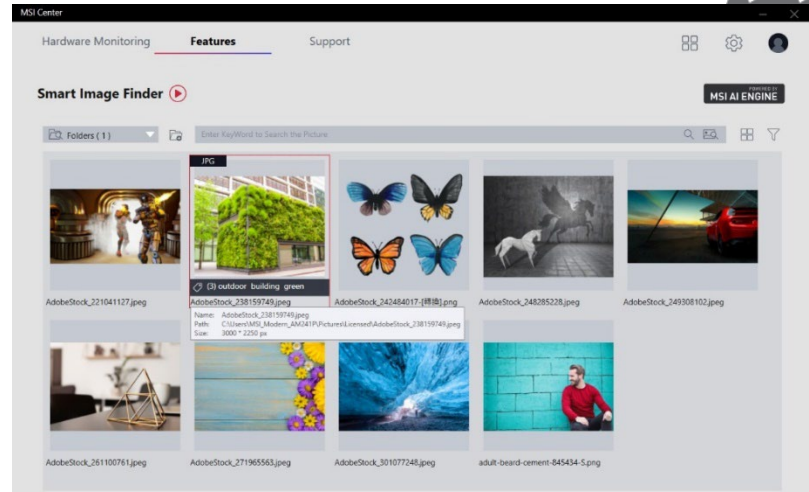
MSI Cloud Center



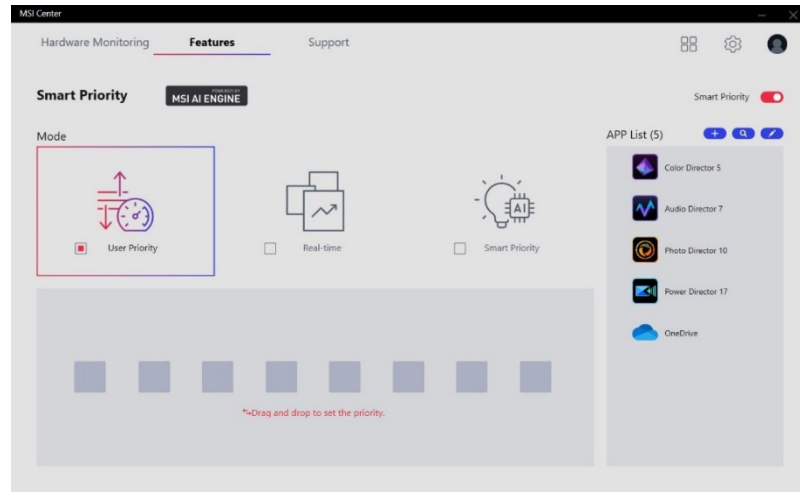


MSI Center

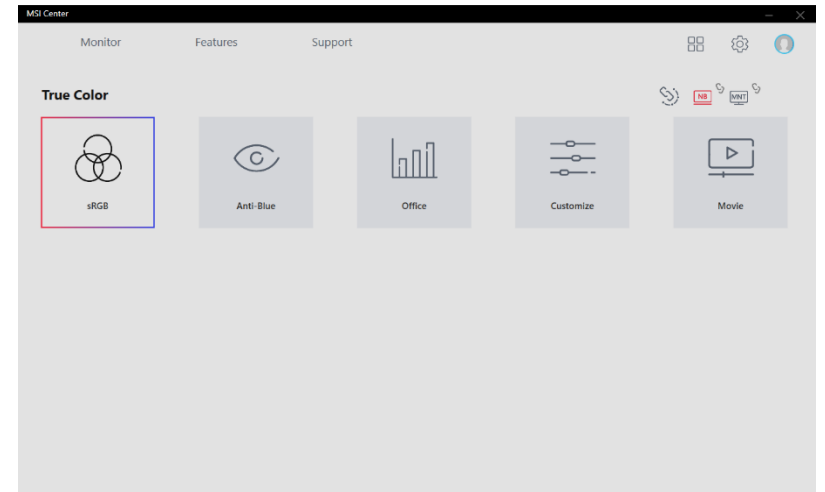
The MSI Center takes optimization to the next level with customizable UI that avoid unnecessary workload for your system and easily adjustable system modes; it helps to prioritize & allocate the resource on your hand and accelerate the performance of those software which you work with every day.



Easily organize and find your pictures with Smart Image Finder



Prioritize your work with Smart Priority

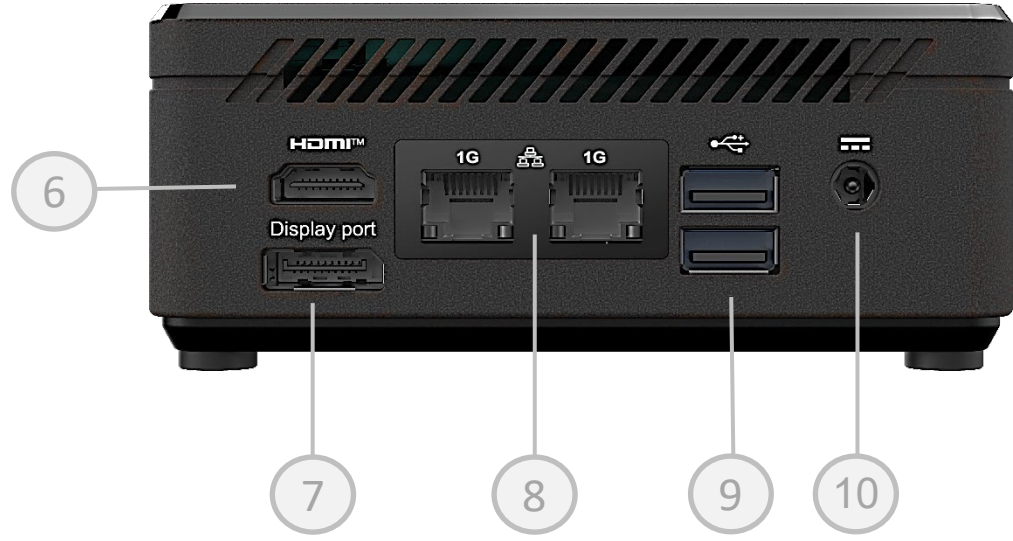
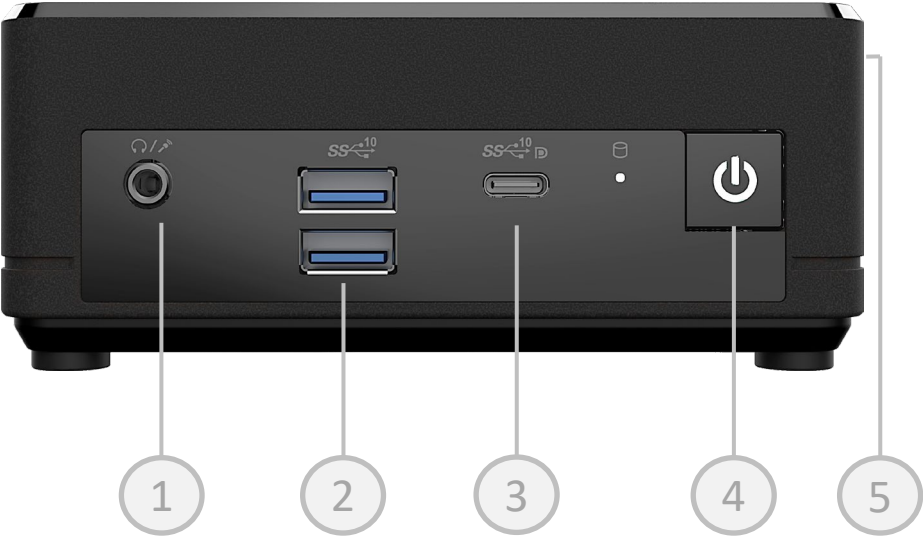


Setup your monitor color for different use

*Features blocked(will not show on UI): User Scenario/ Game Highlights/ Mystic Light/ Ambient Link/ Duet Display

*The interface and functionality may differ due to version change. Please download the latest MSI Center APP through Microsoft Store.

Cubi N ADL S - I/O Connection



Front:

- 1. 1x Mic-in / Headphone-out combo
- 2. 2x USB 3.2 Gen 2 Type A
- 3. 1x USB 3.2 Gen 2 Type-C (DP Alt.)
- 4. Power Button
- 5. Kensington Lock

Rear:

- 6. 1x HDMI™-out (supports 4K @60Hz as specified in HDMI™ 2.1)
- 7. 1x DP-out (1.4)
- 8. 2x RJ45 (LAN)
- 9. 2x USB 2.0 Type A
- 10. DC Jack



Cubi N ADL S - Specification

msi

Operating System	Windows 11 Home and Windows 11 Pro
CPU	Intel® Processor N200 (6M Cache, 1.0 GHz up to 3.7 GHz) Intel® Processor N100 (6M Cache, 0.8 GHz up to 3.4 GHz)
Chipset	Intel® SoC
Storage	1x M.2 SSD (auto switch)
System Memory	1x DDR4 3200MHz SO-DIMMs, up to 16GB
Graphics	Intel UHD Graphics
Sound	Realtek® ALC256
I/O (Front)	2x USB 3.2 Gen 2 Type A 1x USB 3.2 Gen 2 Type-C (DP Alternate) 1x Mic-in / Headphone-out combo
I/O (Rear)	2x USB 2.0 Type A 2x RJ45 1x DP out(1.4) 1x HDMI™ out (supports 4K @60Hz as specified in HDMI™ 2.1)
TPM	dTPM 2.0
Wireless LAN	Intel Wireless AC 3168 or Intel Wireless AC 9462
Bluetooth	4.2 (for AC 3168) / 5.1 (for AC 9462)
LAN	2x Realtek® RTL8111H
AC Adapter / PSU	65W
Kensington Lock	Yes
Cooling System	Fanless Design
Volume	0.66L
Dimension (WxDxH)	124 X 124 X 53.7 mm (4.88 X 4.88 X 2.11 inch)
Weight (N.W./ G.W.)	0.55 kg (1.21 lbs) / 1.4 kg (3.09 lbs)
VESA Mount	75 x 75 mm and 100 x 100 mm
External Power Switch	Optional



Industry



Retail



Hospitality



Transportation



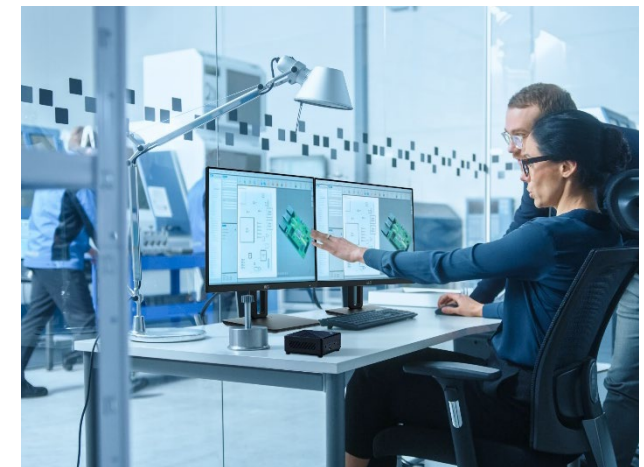
Enterprise



Education



Factory



Successful & Stylish B2B projects

Over the past years, MSI has successfully supported Countless of commercial projects, including government tenders, restaurant & hotel facilitation, shopping mall navigation projects, school & university developments and professional office projects.

Find more details about many of these projects on:

<https://www.msi.com/pro-projects/global>

