

Installation Guide

PoE Injector and PoE Splitter

To ask questions, find answers, and communicate with TP-Link users or engineers, please visit <https://community.tp-link.com> to join TP-Link Community.

For technical support and other information, please visit <https://www.tp-link.com/support>, or simply scan the QR code.

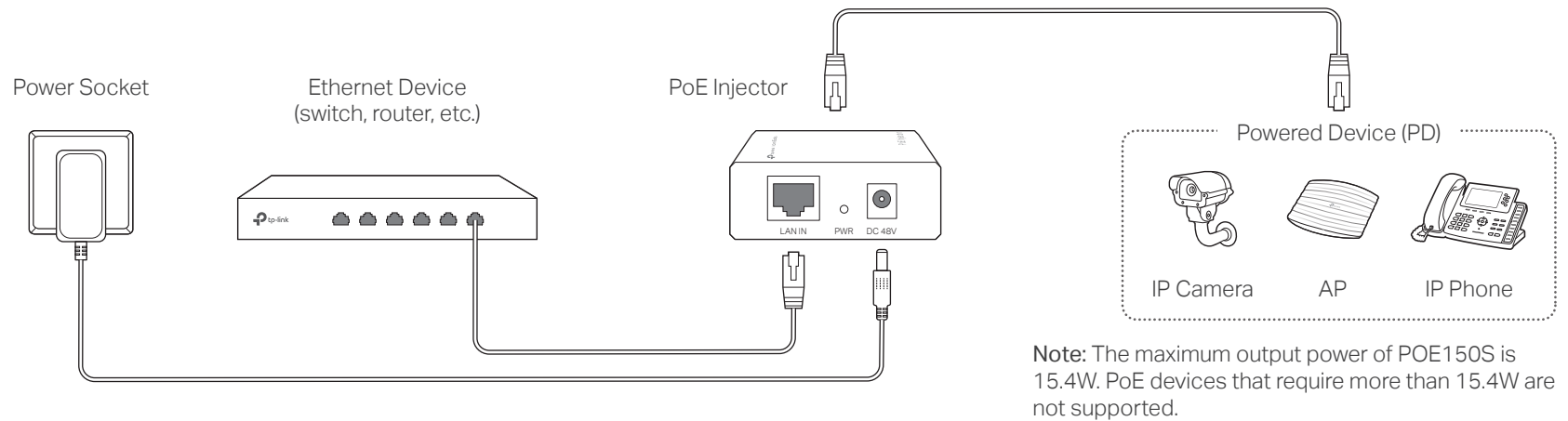


© 2023 TP-Link 7106510639 REV6.20.0

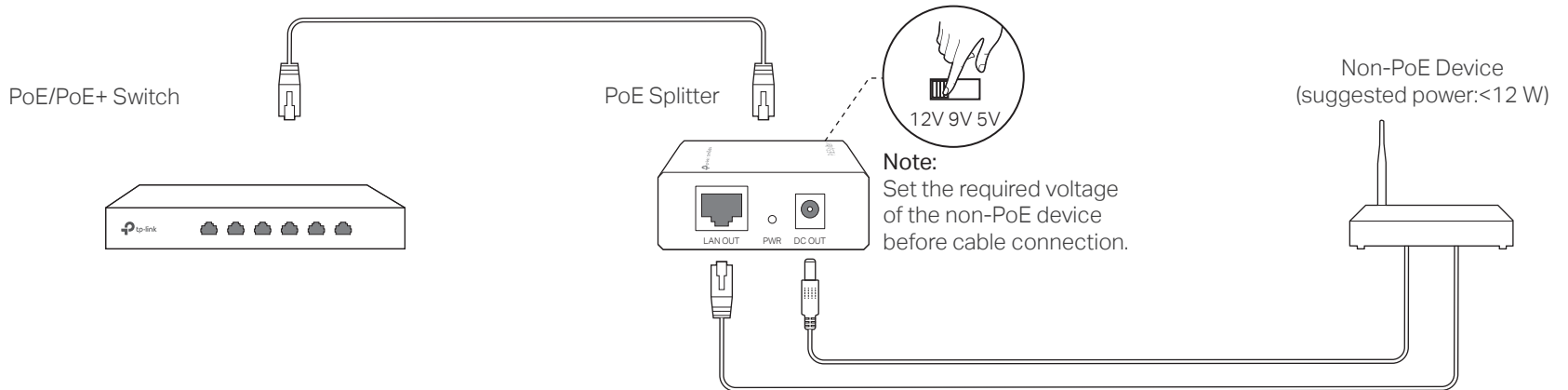
Some models featured in this guide may be unavailable in your country or region. For local sales information, visit <https://www.tp-link.com>.

For simplicity, we will take POE150S and POE10R for example throughout the Guide, other models may differ in appearance.

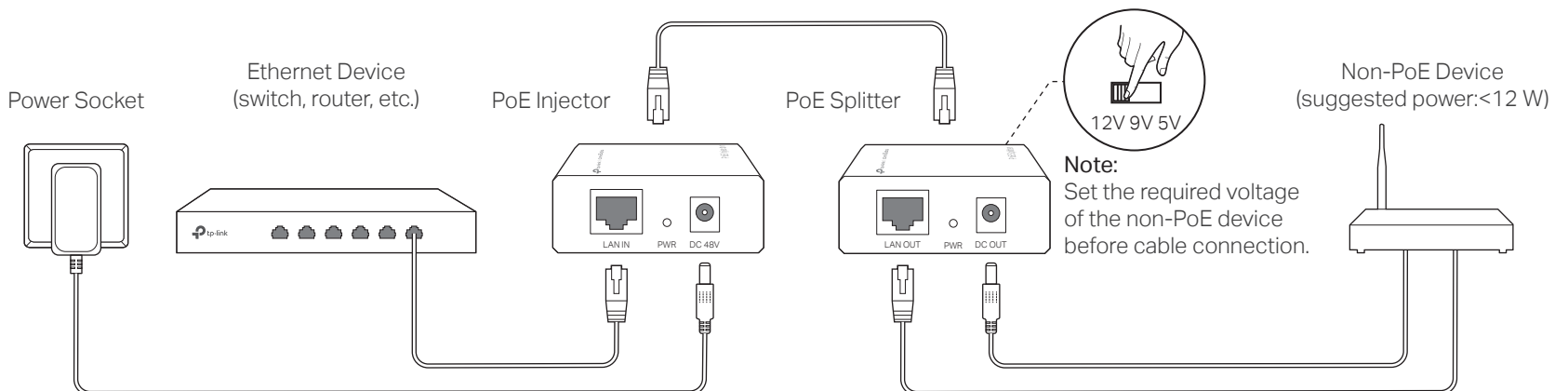
PoE Injector Only The PoE Injector supplies steady power and data connectivity to a powered device such as PoE IP Camera, PoE AP and PoE IP Phone through an Ethernet cable.



PoE Splitter Only The PoE Splitter can be used with a PoE/PoE+ switch to deliver direct current (DC) power and data to a Non-PoE device.

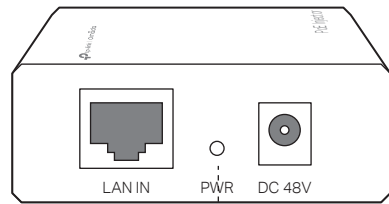


PoE Injector & Splitter The PoE injector and PoE splitter can be used as a kit to supply power and transmit data to a Non-PoE device.



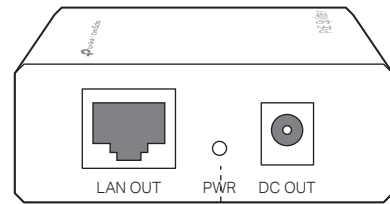
Power LED Explanation

PoE Injector:



On: Supplying power normally
Off: No power supply

PoE Splitter:



On: Connected to PSE correctly
Off: No PSE is connected

FAQ

Q1. Can the PoE injector supply power to a PoE device which doesn't have a gigabit PoE port?

A: Yes. All RJ45 ports of the PoE injector support 10/100/1000 Mbps auto-negotiation.

Q2. What can I do if my PoE injector doesn't supply power to the powered device or the supplied power is unstable?

- A1: Ensure the PD is PoE-compliant and its connecting port supports the PoE function.
- A2: Ensure the power consumption of the PD doesn't exceed 15.4 W, otherwise the overload protection of the PoE injector will be activated. The quality and length of the Ethernet cable may influence the reception of the power supply.

Q3. Must I use the PoE injector together with the PoE splitter?

A: No. The PoE injector can supply power to all PDs support PoE function. The PoE splitter is used with a PoE switch or the PoE injector to supply power to a non-PoE device.

Q4. The Power LED of PoE injector is not lit.

- A1: Ensure the power cord is connected the PoE injector with power source properly.
- A2: Ensure the power consumption of the PD doesn't exceed 15.4 W, otherwise the PoE injector will activate the overload protection and the power will be cut off.

Safety Information

- Keep the device away from water, fire, humidity or hot environments.
- Do not attempt to disassemble, repair, or modify the device. If you need service, please contact us.
- Do not use any other chargers than those recommended.
- Do not use damaged charger or USB cable to charge the device.
- Adapter shall be installed near the equipment and shall be easily accessible.

Please read and follow the above safety information when operating the device. We cannot guarantee that no accidents or damage will occur due to improper use of the device. Please use this product with care and operate at your own risk.

FCC compliance information statement

Product Name: PoE Injector
 Model Number: POE150S

Component Name	Model
I.T.E. POWER SUPPLY	T480038-2B1

Product Name: PoE Splitter
 Model Number: POE10R
 Responsible party:
 TP-Link USA Corporation
 Address: 10 Mauchly, Irvine, CA 92618
 Website: <https://www.tp-link.com/us/>
 Tel: +1 626 333 0234
 Fax: +1 909 527 6804
 E-mail: sales.usa@tp-link.com

This equipment has been tested and found to comply with the limits for a Class B digital device, pursuant to part 15 of the FCC Rules. These limits are designed to provide reasonable protection against harmful interference in a residential installation. This equipment generates, uses and can radiate radio frequency energy and, if not installed and used in accordance with the instructions, may cause harmful interference to radio communications. However, there is no guarantee that interference will not occur in a particular installation. If this equipment does cause harmful interference to radio or television reception, which can be determined by turning the equipment off and on, the user is encouraged to try to correct the interference by one or more of the following measures:

- Reorient or relocate the receiving antenna.
- Increase the separation between the equipment and receiver.
- Connect the equipment into an outlet on a circuit different from that to which the receiver is connected.
- Consult the dealer or an experienced radio/TV technician for help.

This device complies with part 15 of the FCC Rules. Operation is subject to the following two conditions:

- This device may not cause harmful interference.
- This device must accept any interference received, including interference that may cause undesired operation.

Any changes or modifications not expressly approved by the party responsible for compliance could void the user's authority to operate the equipment.

We, TP-Link USA Corporation, has determined that the equipment shown as above has been shown to comply with the applicable technical standards, FCC part 15. There is no unauthorized change is made in the equipment and the equipment is properly maintained and operated.

Issue Date: 2024.01.24

FCC compliance information statement

Product Name: I.T.E. POWER SUPPLY
 Model Number: T480038-2B1

Responsible party:
 TP-Link USA Corporation
 Address: 10 Mauchly, Irvine, CA 92618
 Website: <https://www.tp-link.com/us/>
 Tel: +1 626 333 0234
 Fax: +1 909 527 6804
 E-mail: sales.usa@tp-link.com

This equipment has been tested and found to comply with the limits for a Class B digital device, pursuant to part 15 of the FCC Rules. These limits are designed to provide reasonable protection against harmful interference in a residential installation. This equipment generates, uses and can radiate radio frequency energy and, if not installed and used in accordance with the instructions, may cause harmful interference to radio communication. However, there is no guarantee that interference will not occur in a particular installation. If this equipment does cause harmful interference to radio or television reception, which can be determined by turning the equipment off and on, the user is encouraged to try to correct the interference by one or more of the following measures:

- Reorient or relocate the receiving antenna.
- Increase the separation between the equipment and receiver.
- Connect the equipment into an outlet on a circuit different from that to which the receiver is connected.
- Consult the dealer or an experienced radio/TV technician for help.

This device complies with part 15 of the FCC Rules. Operation is subject to the following two conditions:

- This device may not cause harmful interference.
- This device must accept any interference received, including interference that may cause undesired operation.

Any changes or modifications not expressly approved by the party responsible for compliance could void the user's authority to operate the equipment.

We, TP-Link USA Corporation, has determined that the equipment shown as above has been shown to comply with the applicable technical standards, FCC part 15. There is no unauthorized change is made in the equipment and the equipment is properly maintained and operated.

Issue Date: 2024.01.24



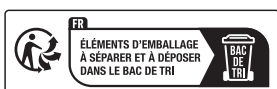
Продукт сертифіковано згідно з правилами системи УкрСЕПРО на відповідність вимогам нормативних документів та вимогам, що передбачені чинними законодавчими актами України.



Industry Canada Statement
 CAN ICES-3 (B)/NMB-3(B)

CE Mark Warning

This is a class B product. In a domestic environment, this product may cause radio interference, in which case the user may be required to take adequate measures.



BSMI Notice (For POE150S)

安全諮詢及注意事項

- 請使用原裝電源供應器或只能按照本產品註明的電源類型使用本產品。
- 清潔本產品之前請先拔掉電源線。請勿使用液體、噴霧清潔劑或濕布進行清潔。
- 注意防潮，請勿將水或其他液體潑灑到本產品上。
- 插槽與開口供通風使用，以確保本產品的操作可靠並防止過熱，請勿堵塞或覆蓋開口。
- 請勿將本產品置放於靠近熱源的地方。除非有正常的通風，否則不可放在密閉位置中。
- 請不要私自拆開機殼或自行維修，如產品有故障請與原廠或代理商聯繫。

限用物質含有情況標示聲明書

產品元件名稱	限用物質及其化學符號					
	鉛 Pb	鎘 Cd	汞 Hg	六價鉻 Cr ⁶⁺	多溴聯苯 PBB	多溴二苯醚 PBDE
PCB	○	○	○	○	○	○
外殼	○	○	○	○	○	○
電源供應器	-	○	○	○	○	○
其他及其配件	-	○	○	○	○	○
備考1: "○"系指該項限用物質之百分比含量未超出百分比含量基準值。 備考2: "-"系指該項限用物質為排除項目。						

Specifications

General Specifications

Standards	IEEE 802.3i, IEEE802.3u, IEEE 802.3ab, IEEE 802.3af
LED	PWR
Cable Type	UTP/STP of Cat. 5 or above (based on the standards that the connected devices comply with)
Ports	POE150S: <ul style="list-style-type: none"> 10/100/1000 Mbps Auto-Negotiation RJ45 LAN IN Port 10/100/1000 Mbps Auto-Negotiation RJ45 POWER+DATA OUT Port DC 48 V Power Input Port POE10R: <ul style="list-style-type: none"> 10/100/1000 Mbps Auto-Negotiation RJ45 POWER+DATA IN Port 10/100/1000 Mbps Auto-Negotiation RJ45 LAN OUT Port 5V / 9V / 12V DC OUT Power Output Port

Environmental and Physical Specifications

Operating Temperature	0 °C to 40 °C (32 °F to 104 °F)
Storage Temperature	-40 °C to 70 °C (-40 °F to 158 °F)
Operating Humidity	10% to 90% non-condensing
Storage Humidity	5% to 90% non-condensing

EU Declaration of Conformity

TP-Link hereby declares that the device is in compliance with the essential requirements and other relevant provisions of directives 2014/30/EU, 2014/35/EU, 2009/125/EC, 2011/65/EU and (EU)2015/863.

The original EU declaration of conformity may be found at <https://www.tp-link.com/en/ce>.

UK Declaration of Conformity

TP-Link hereby declares that the device is in compliance with the essential requirements and other relevant provisions of the Electromagnetic Compatibility Regulations 2016 and Electrical Equipment (Safety) Regulations 2016.

The original UK Declaration of Conformity may be found at <https://www.tp-link.com/support/ukca>

Продукт сертифіковано згідно з правилами системи УкрСЕПРО на відповідність вимогам нормативних документів та вимогам, що передбачені чинними законодавчими актами України.

Explanation of the symbols on the product label

Symbols may vary from products. The label is at the bottom of the product.

Symbol	Explanation
	Class II equipment
	Class II equipment with functional earthing
	Alternating current
	Direct current
	Polarity of d.c. power connector
	For indoor use only
	Dangerous voltage
	Caution, risk of electric shock
	Energy efficiency Marking
	Protective earth
	Earth
	Frame or chassis
	Functional earthing
	Caution, hot surface
	Caution
	Operator's manual
	Stand-by
	"ON"/"OFF" (push-push)
	Fuse
	Fuse is used in neutral N
	RECYCLING This product bears the selective sorting symbol for Waste electrical and electronic equipment (WEEE). This means that this product must be handled pursuant to European directive 2012/19/EU in order to be recycled or dismantled to minimize its impact on the environment. User has the choice to give his product to a competent recycling organization or to the retailer when he buys a new electrical or electronic equipment.
	Caution, avoid listening at high volume levels for long periods
	Disconnection, all power plugs
m	Switch of mini-gap construction
μ	Switch of micro-gap construction (for US version) Switch of micro-gap /micro-disconnection construction (for other versions except US)
ε	Switch without contact gap (Semiconductor switching device)