

msi

Cubi 5 12M

Be Your Window To The World



Feature Overview



Small Size

4K UHD
3840 x 2160

4K UHD Support

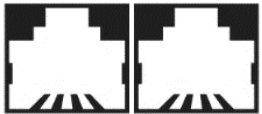


Thunderbolt™ 4

Thunderbolt 4



Matrix Display



Dual LAN



MSI Cloud Center



MSI Center



VESA Mountable

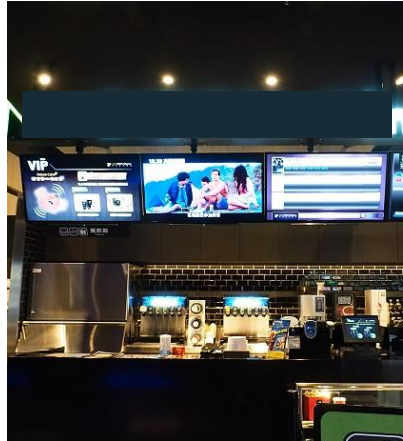


Cubi 5

Be Your Window To The World



Ready For Various Scenarios



We always focus on how to improve the efficiency, stability and flexibility for users in any kinds of situations.

Wavy Meshed Design

MSI Cubi 5 is a mini PC in its kind. With a less than 0.7 liter case that still provides all the elements of a desktop-worthy PC. With a wavy meshed design, Cubi 5 is not just a mini PC but a fashion house decoration.





MSI Cloud Center

Fast, Secure & Wireless Backup

Fast, secure, and wireless backup & download between your PC and mobile devices. Transfer files, photos, videos, and more between your PC, Android, and iOS device faster and easier than a cabled connection. You can make these files accessible to your family or team members or make files as private as you want. The decision is in your hands.

MSI Cloud Center



Support Up To 8K Resolution

msi

Cubi 5 allows you to enjoy the best experience of watching movie with your family or attending online conference call while working from home or learning professional tasks at home.



Bolt To The Next Power

Thunderbolt™ 4* brings Thunderbolt to USB-C at speeds up to 40 Gbps, creating one compact port that does it all – delivering the fastest, most versatile connection to any dock, display, or data device & NAS. Embracing a wide array of interface compatibilities so that you can edit, collaborate and share seamlessly

Up to
40Gbps
Data Transmission Speed

Up to
10GbE
LAN Speed
*With Thunderbolt to 10GbE Switch

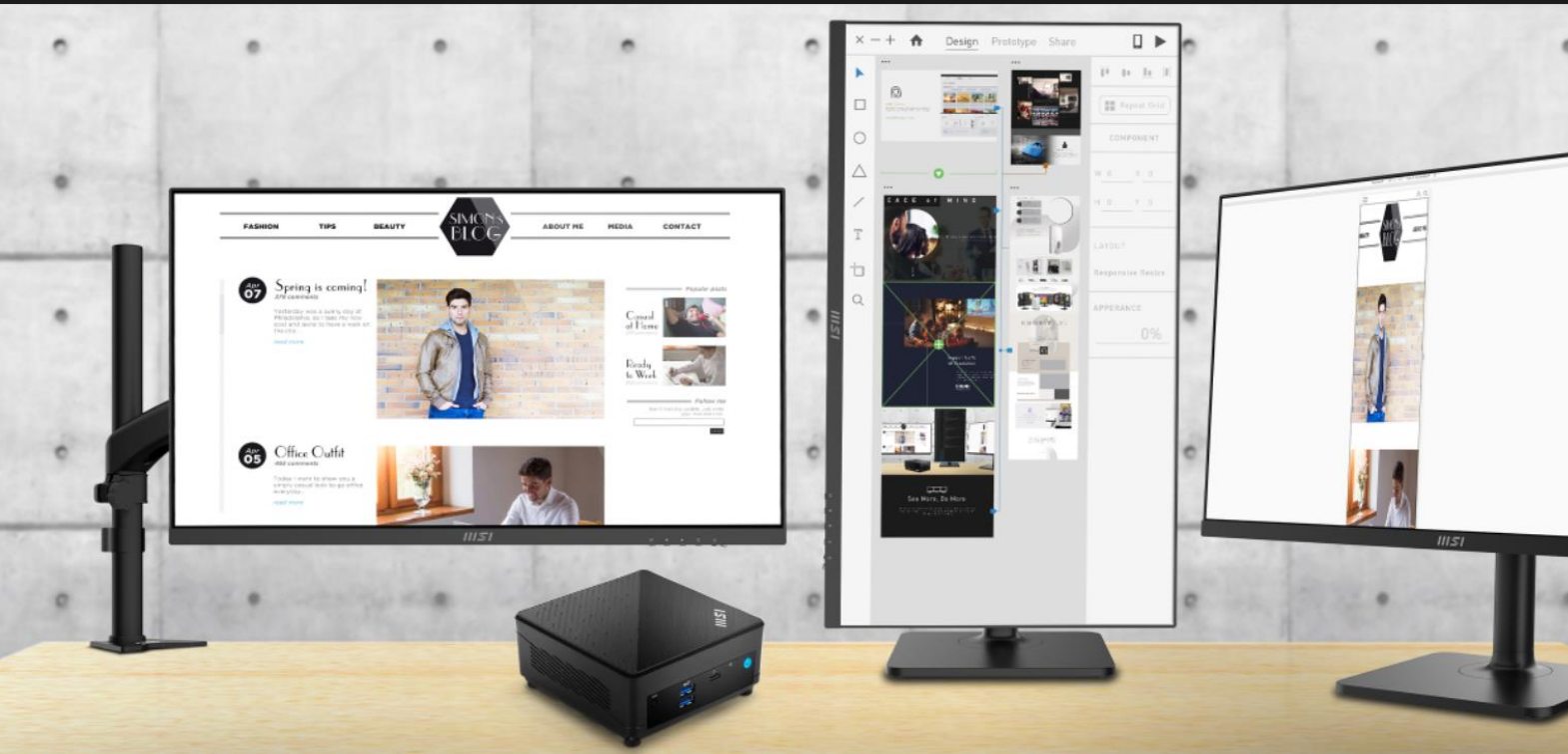
Support
USB-C
Protocols



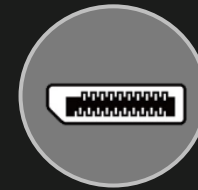
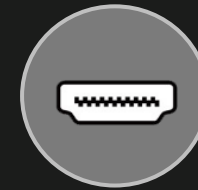
Actual features may vary by configuration.

See More, Do More

msi



With HDMI, DP, and Thunderbolt 4, Cubi 5 allows you to extend to three monitors to preview your E-commerce content & data at home or in the office, enhancing your efficiency.

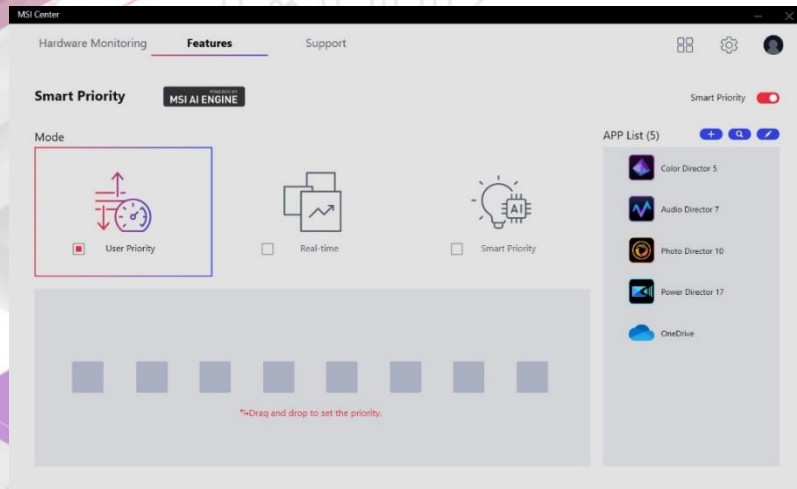




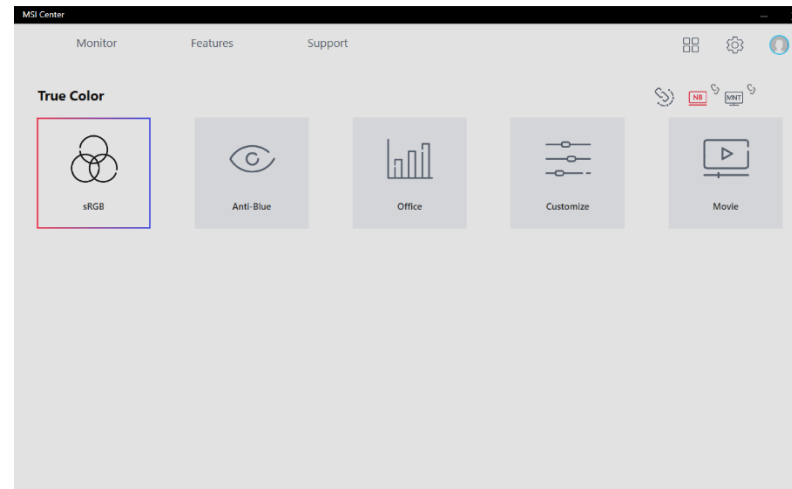
MSI Center



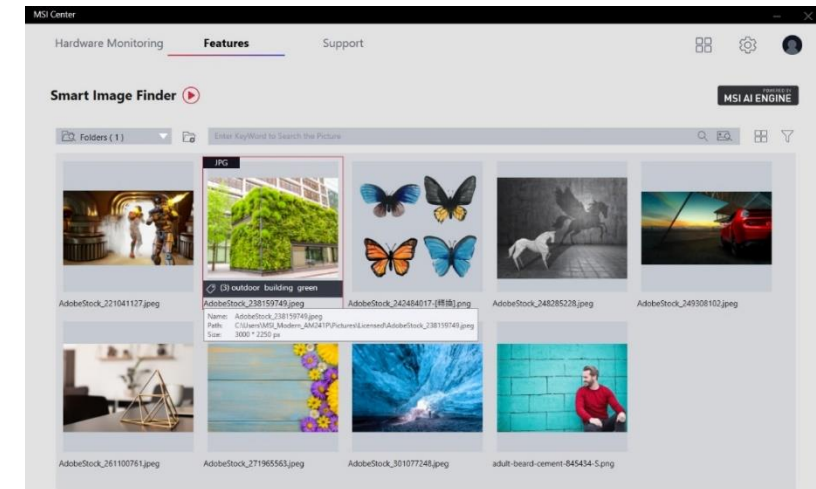
The MSI Center takes optimization to the next level with customizable UI that avoid unnecessary workload for your system and easily adjustable system modes; it helps to prioritize & allocate the resource on your hand and accelerate the performance of those software which you work with every day.



Prioritize your work with Smart Priority



Setup your monitor color for different use

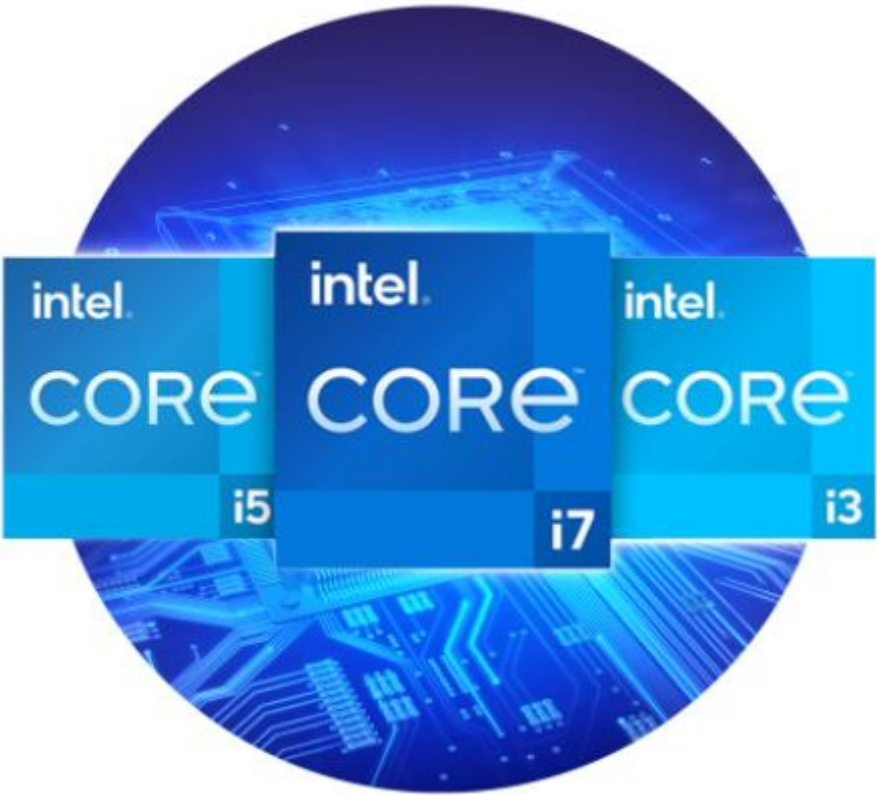


Easily organize and find your pictures with Smart Image Finder

*Features blocked(will not show on UI): User Scenario/ Game Highlights/ Mystic Light/ Ambient Link/ Duet Display

*The interface and functionality may differ due to version change. Please download the latest MSI Center APP through Microsoft Store.

Stable and Powerful



Up to
Core i7-1255U

With 12 Cores

Up to
64GB

Dual Channel Memory

Support

Windows 11 Pro

Equips up to 12th Gen Intel® Core™ i7 processor (Alder Lake) with 10 cores and 12 threads, delivering computing capability and keeping you in the flow, wherever you go. Also, enjoy more detailed, immersive viewing experience with Intel® Iris® Xe Graphics.



Connect All of Your Productive Devices



Wi-Fi 6E puts more emphasis on transmission security and improves the signal between the interference problem can also be connected to more devices at the same time, thereby meeting the trend of higher and higher data transmission bandwidth requirements with speed up to 2.4Gbps.

*SPEC varies by model.

Up to
3X
Faster
Gigabit Speeds

Up to
75%
Lower Latency

Support
MU-MIMO
Protocols

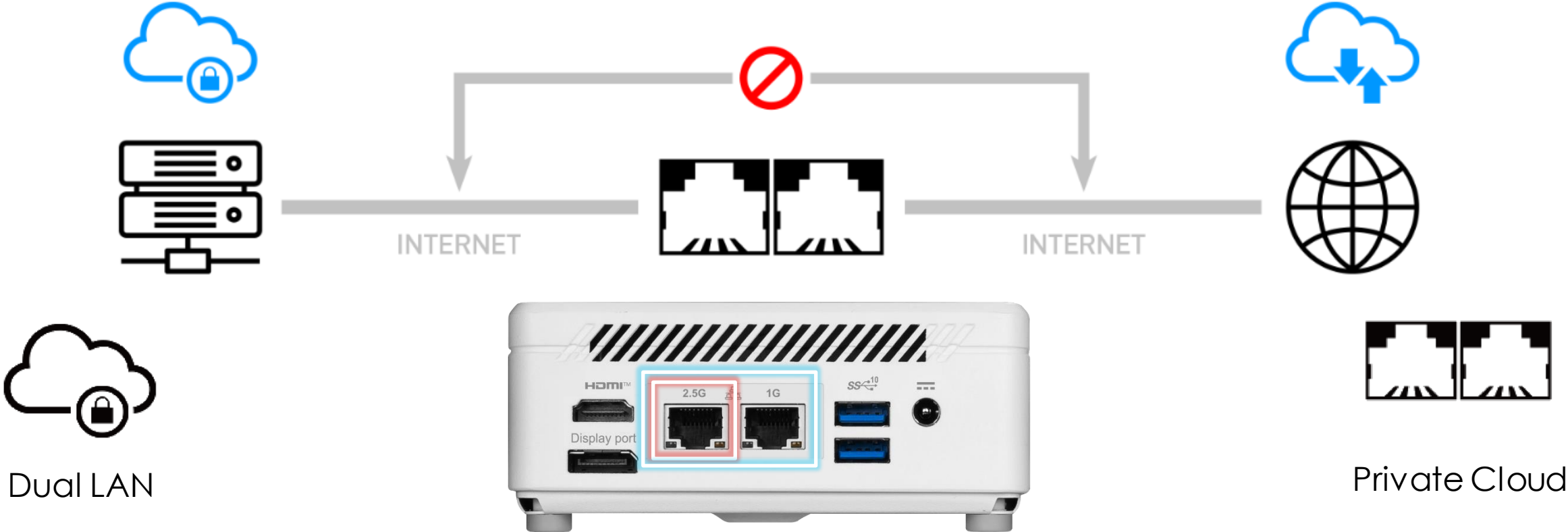


USB 3.2 Gen 2 Type A



With data transfer speeds up to 10Gbps, dual USB 3.2 Gen 2 Type A ports in the front I/O offer twice the bandwidth of the older USB 3.1 Gen 1 Type A ports, effectively halving any data delay or waiting time.

Dual LAN & 2.5G LAN



More than Dual LAN, the best way to secure your data and prevent the Hacker. Dual premium network solution for both Intranet and Internet, offering a smooth gaming experience for effective network connection. Users can also connect and rapidly transfer data over a network with the high-bandwidth and low-latency 2.5Gbps Ethernet LAN.

Easy Maintenance

Users can easily upgrade two SO-DIMM, one M.2 SSD or one 2.5" HDD/SSD by disassembling the cover. Made Cubi 5 an even flexible desktop and also reduce the time wasting on upgrading.



SPEC varies by model.

FW TPM Support

msi



TPM Support

FW TPM (Trusted Platform Module) technology is designed to provide hardware-based, security-related functions. You can store your sensitive data & passwords by encryption keys for advanced security.

VESA Mount Support

msi



VESA Mountable design allows users to hook Cubi 5 up anywhere you like. Not only improve the flexibility of using Cubi 5, but also let users make good use of their space at home or at office.

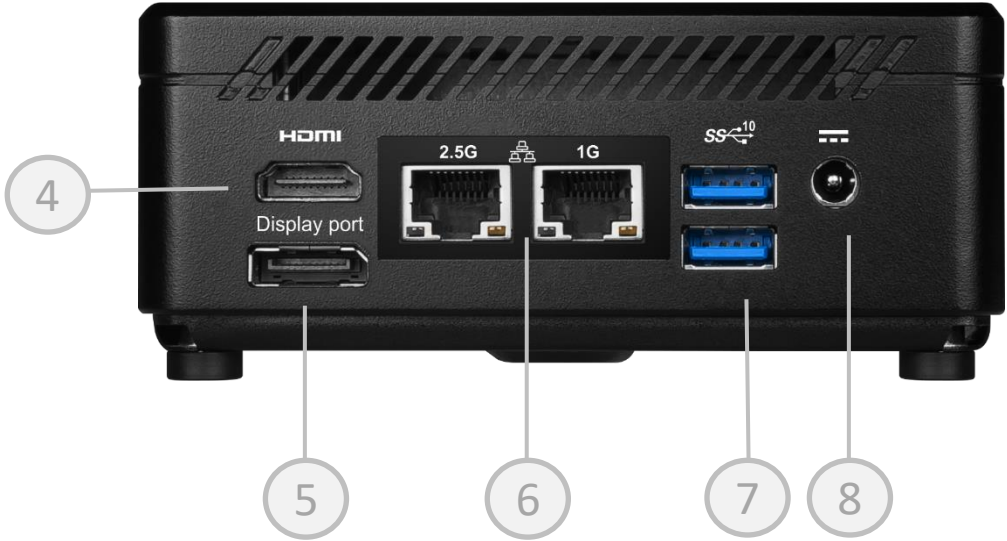


I/O Connection



Front:

- 1. 1x Mic-in / Headphone-out combo
- 2. 2x USB 3.2 Gen 2 Type A
- 3. 1x ThunderBolt 4 (USB Type-C)



Rear:

- 4. 1x HDMI out (2.0b)
- 5. 1x DP out(1.4)
- 6. 2x RJ45
- 7. 2x USB 3.2 Gen 2 Type A
- 8. DC Jack



Specification

msi

Processor	Intel® Core™ i7-1255U / Intel® Core™ i5-1235U / Intel® Core™ i3-1215U
Operating System	Recommended : Windows 11 Home and Windows 11 Pro
Chip Set	Intel SoC
Graphic	Intel® Iris® Xe Graphics (i5 above)
Memory	2x DDR4 3200MHz SO-DIMMs, up to 64GB
SSD / HDD	1x M.2 SSD (auto switch) 1x 2.5" HDD
Wireless	Intel WiFi 6 AX201 or Intel Wi-Fi 6E AX211
Bluetooth	5.2 (AX201) / 5.3 (AX211)
I/O	Front: 2x USB 3.2 Gen 2 Type A, 1x ThunderBolt 4 (USB Type-C), 1x Mic-in / Headphone-out combo Rear: 2x USB 3.2 Gen 2 Type A, 2x RJ45, 1x DP out(1.4), 1x HDMI out (2.0b)
Wall Mount	Support standard 75x75 & 100x100 VESA Wall Mount
External Power Switch	Optional
Dimension (W x D x H)	124 x 124 x 53.7 mm / 4.88 x 4.88 x 2.11 inch
Weight (N.W./ G.W.)	0.55 kg / 1.4 kg ; 1.21 lbs / 3.09 lbs
Volume	0.66 liters / 1.39 pints
Power	65W



Successful & Stylish B2B projects

Over the past years, MSI has successfully supported Countless of commercial projects, including government tenders, restaurant & hotel facilitation, shopping mall navigation projects, school & university developments and professional office projects.

Find more details about many of these projects on:

<https://www.msi.com/pro-projects/global>

