

# AXIS TQ5001-E Wall-and-Pole Mount

## Robust mount for PTZ cameras

With this wall-and-pole mount, installers can choose between using an RJ45 or IDC (insulation-displacement contact) connector for the installation. It features a built-in cable with an Ethernet IP66-rated RJ45 connector to facilitate installation and prevent water and dust from entering the camera. Made from impact-resistant, outdoor-ready material, AXIS TQ5001-E is suited for both indoor and outdoor environments. Flipping the mounting bracket makes it possible to turn AXIS TQ5001-E from a wall mount to a pole mount (AXIS Steel Straps TX30 are required). The mount is also suitable for corner mounting with an optional accessory.

- > **Robust, IK10-rated**
- > **For indoor and outdoor use**
- > **Versatile connection with IDC connector**
- > **Built-in IP66-rated RJ45 connector**
- > **5-year warranty**



# AXIS TQ5001-E Wall-and-Pole Mount

## Approvals

**Product markings** CSA, UL/cUL, UKCA, CE, KC, VCCI, RCM

**Supply chain** TAA compliant

**EMC** CISPR 35, CISPR 32 Class A, EN 55035, EN 55032 Class A, EN 50121-4, EN 61000-6-1, EN 61000-6-2  
**Australia/New Zealand:** RCM AS/NZS CISPR 32 Class A  
**Canada:** ICES-3(A)/NMB-3(A)  
**Japan:** VCCI Class A  
**Korea:** KS C 9835, KS C 9832 Class A  
**USA:** FCC Part 15 Subpart B Class A  
**Railway:** IEC 62236-4

**Safety** CAN/CSA C22.2 No. 62368-1 ed. 3, IEC/EN/UL 62368-1 ed. 3

**Environment** IEC 60068-2-1, IEC 60068-2-2, IEC 60068-2-6, IEC 60068-2-27, IEC/EN 60529 IP66, IEC/EN 62262 IK10, NEMA 250 Type 4X, MIL-STD 810G 509.5

## General

**Supported products** AXIS P55 Series  
AXIS P56 Series  
AXIS Q37 Series  
AXIS Q60 Series  
AXIS Q61 Series  
For a complete list of compatible cameras, go to [axis.com/products/axis-tq5001-e-wall-and-pole-mount#compatible-products](https://axis.com/products/axis-tq5001-e-wall-and-pole-mount#compatible-products)

**Casing** IP66-, NEMA 4X- and IK10-rated  
Aluminum casing  
Color: white NCS S 1002-B

**Mounting** Back: Cable hole  
Bottom: 3/4" (M25) conduit side entries

**Connectors** Output: IP66, RJ45 Ethernet (male)  
Input: RJ45 Ethernet (female), IDC

**Operating conditions** -50 °C to 65 °C (-58 °F to 149 °F)  
Humidity 10–100% RH (non-condensing)

**Storage conditions** -40 °C to 65 °C (-40 °F to 149 °F)  
Humidity 10–100% RH (non-condensing)

**Dimensions** For the overall product dimensions, see the dimension drawing in this datasheet.

**Weight** 1960 g (4.3 lb)  
Maximum load: 40 kg (88.2 lb)

**Box content** Mount, wall bracket, installation guide, cable ties, RJ45 mounting tool

**Optional accessories** AXIS ACI Conduit Adapters  
AXIS T91A64 Corner Bracket  
AXIS Steel Straps TX30 570 mm  
AXIS Steel Straps TX30 1450 mm  
For more accessories, go to [axis.com/products](https://axis.com/products)

**Warranty** 5-year warranty, see [axis.com/warranty](https://axis.com/warranty)

**Part numbers** Available at [axis.com/products/axis-tq5001-e-wall-and-pole-mount#part-numbers](https://axis.com/products/axis-tq5001-e-wall-and-pole-mount#part-numbers)

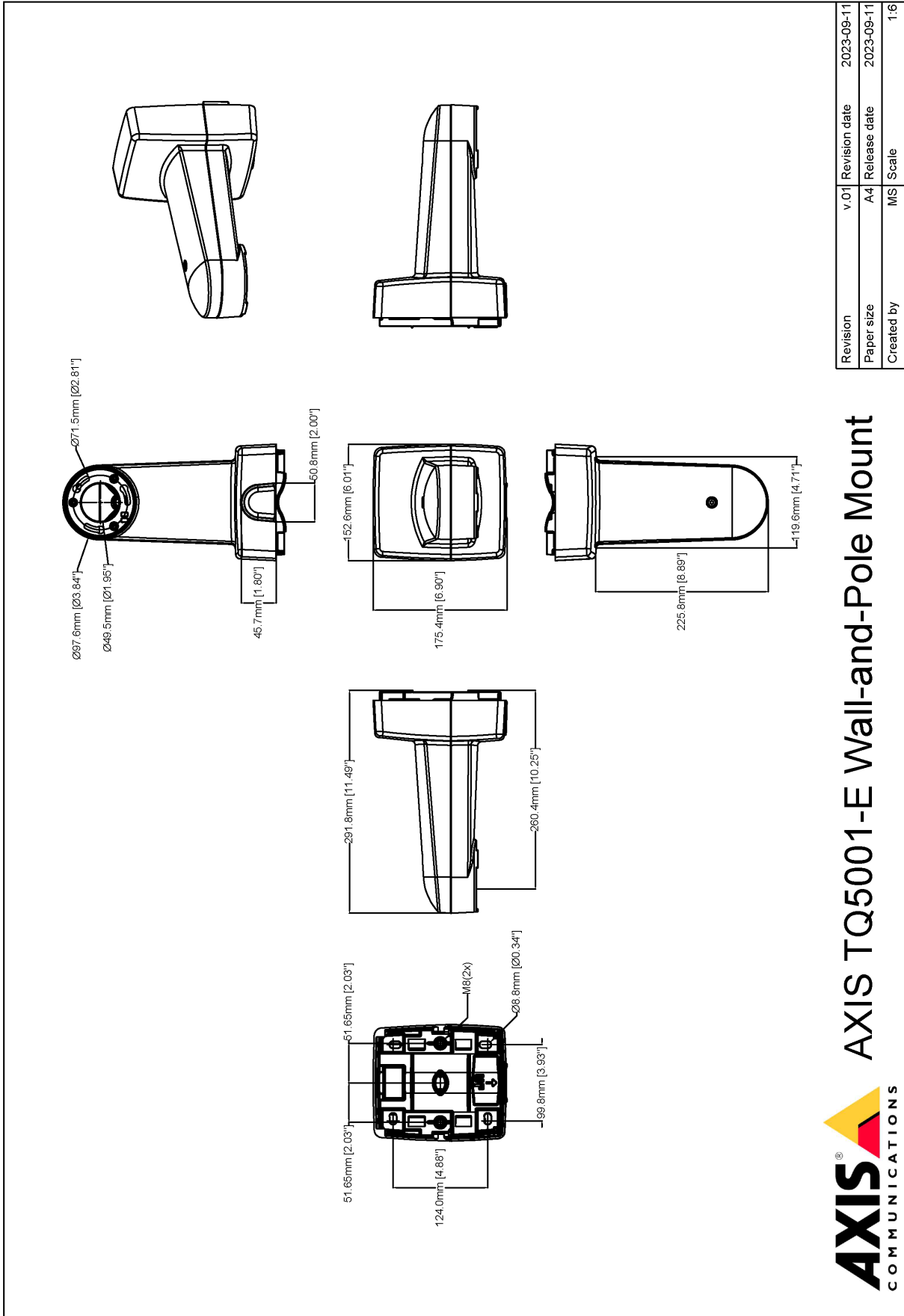
## Sustainability

**Substance control** PVC free

**Materials** Screened for conflict minerals in accordance with OECD guidelines  
To read more about sustainability at Axis, go to [axis.com/about-axis/sustainability](https://axis.com/about-axis/sustainability)

**Environmental responsibility** [axis.com/environmental-responsibility](https://axis.com/environmental-responsibility)  
Axis Communications is a signatory of the UN Global Compact, read more at [unglobalcompact.org](https://unglobalcompact.org)

# Dimension drawing



Revision	v.01	Revision date	2023-09-11
Paper size	A4	Release date	2023-09-11
Created by	MS	Scale	1:6

© 2023 Axis Communications

**AXIS** COMMUNICATIONS  
**AXIS TQ5001-E Wall-and-Pole Mount**

www.axis.com