

1. Disassembly Procedures

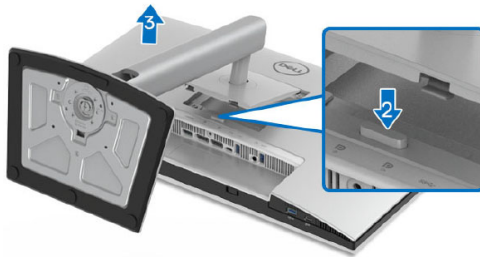
S1 Turn off power

S2 To remove the stand:

Place the monitor on a soft cloth or cushion

Press and hold the stand release button

Lift the stand up and away from the monitor

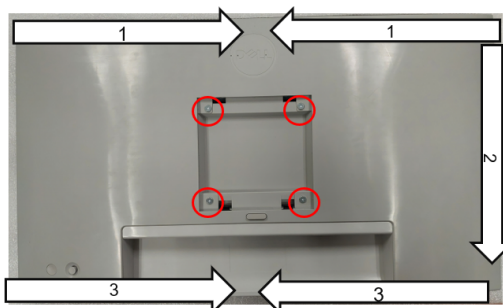


S3 Unlock 4 screws on Rear Cover

Use hands or scraper bar to disassemble Rear Cover from monitor

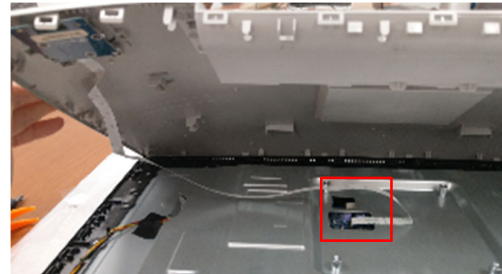
Notice the disassembly order:

Top Side=>Right/ Left Side=>Bottom Side

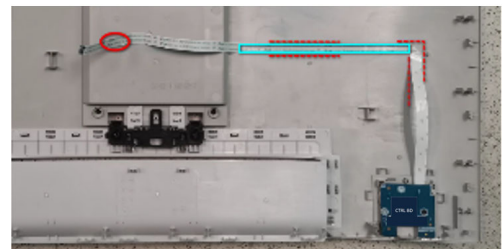


(Screw Torque:8-9Kgf)

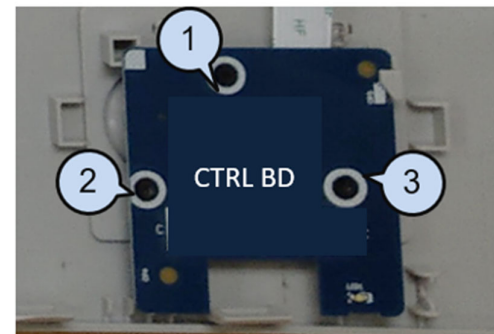
S4 Pull out CTRL BD FFC from I/F BD and tear off it from Main SHD to take off Rear Cover



S5 Tear off a tape from CTRL BD FFC and Rear Cover

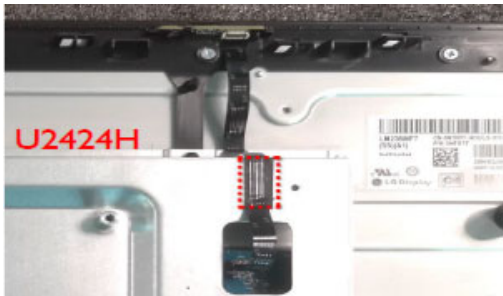


S6 Unlock screw*3 to disassemble CTRL BD from Rear Cover

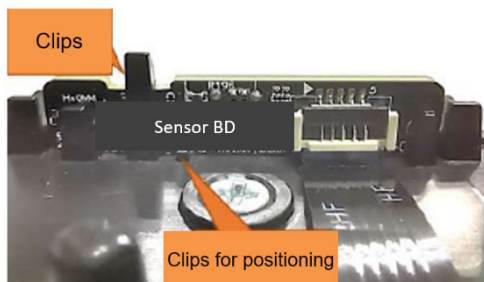


(Screw Torque: 1.6-1.8Kgf)

- S7** Pull out ALS FFC from I/F BD
Tear off tape from ALS FFC and panel
Tear off ALS FFC from Main SHD



- S8** Disassemble "SENSOR BD" from Middle Frame

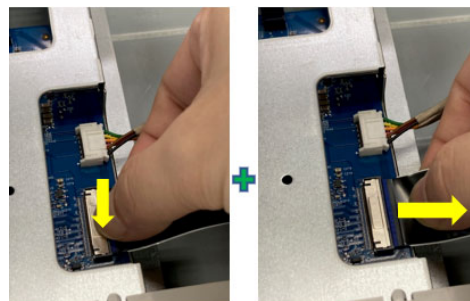


- S9** Unplug ALS FFC from "SENSOR BD"

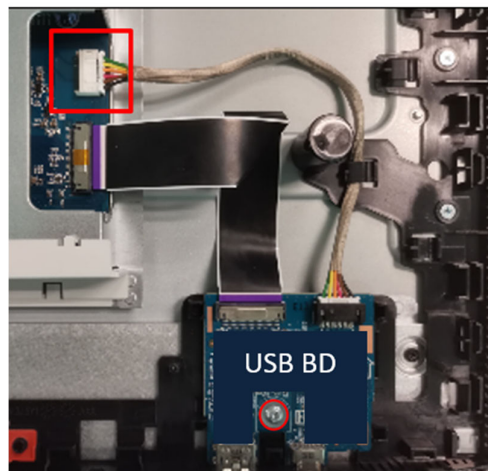


- S10** Press and pull on the lock of connector to disassemble USB FFC from I/F BD

Attention:
USB FFC may be damaged if you pull out it from I/F BD directly without pressing the lock



- S11** Pull out USB wire from I/F BD
Unlock 1 screws to disassemble USB BD from Middle Frame

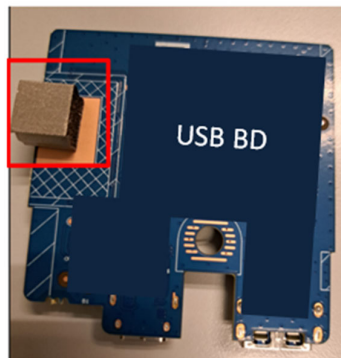


(Screw Torque: 4-5 Kgf)

- S12** Pull out USB FFC and USB wire from USB BD

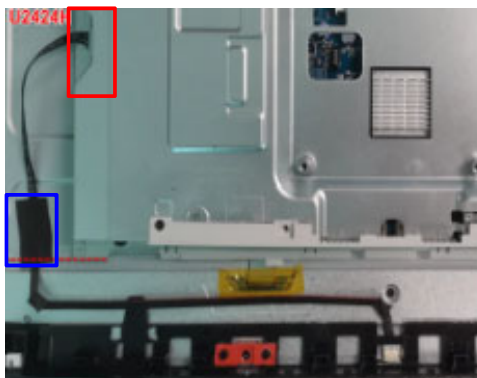


- S13** Take off gasket from USB BD



- S14** Tear off a tape from Backlight wire and panel

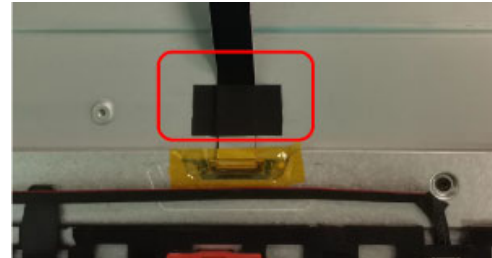
Pull out Backlight wire from SPS BD



- S15** Tear off the yellow tape and acetate tape from the panel

Disassemble EDP cable from Panel

Take off Main SHD from panel



- S16** Unlock 13 screws to disassemble Middle Frame (See red mark)

Unlock 4 screws in the bottom side of Middle Frame (See blue mark)

Take off Middle frame from Panel



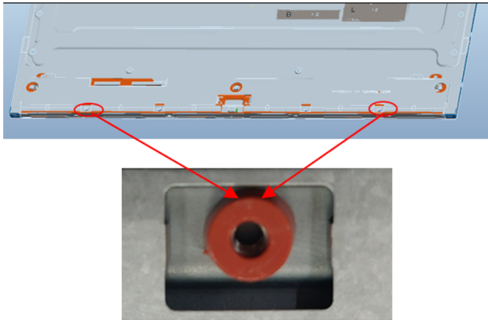
(Screw Torque: 4-5 Kgf)

- S17** Unplug Backlight wire from panel

Tear off the acetate tape from panel



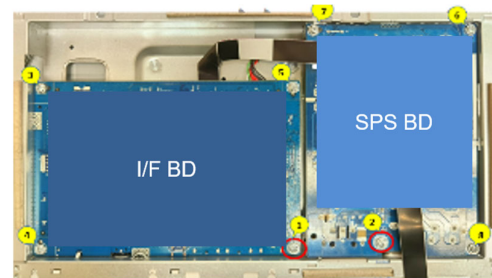
S18 Disassemble 2 plastic BOSS from panel



S19 Disassemble mylar from Main SHD



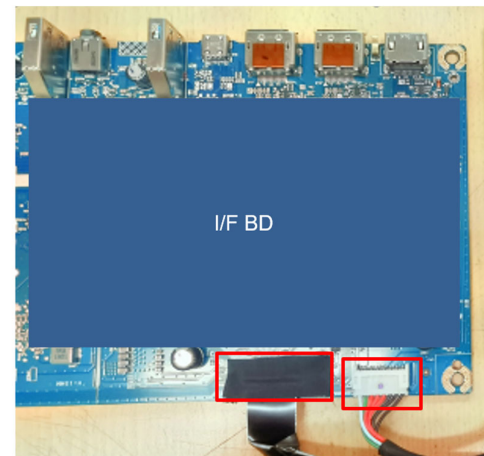
S20 Unlock 8 PCBA screws to disassemble I/F BD, SPS BD from Main SHD



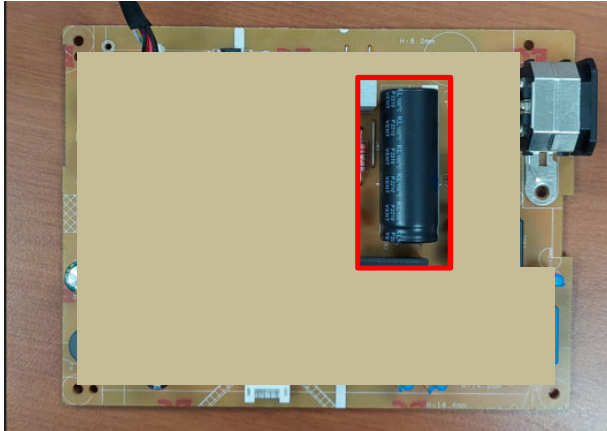
(Screw Torque: 8-9 Kgf)

S21 Tear off the tape from I/F BD

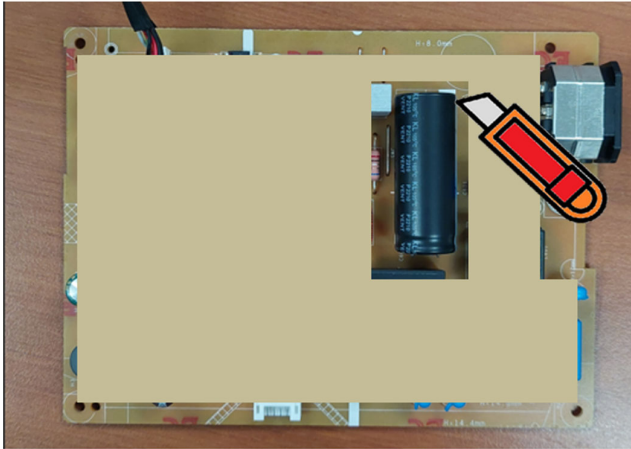
Remove all cables from I/F BD



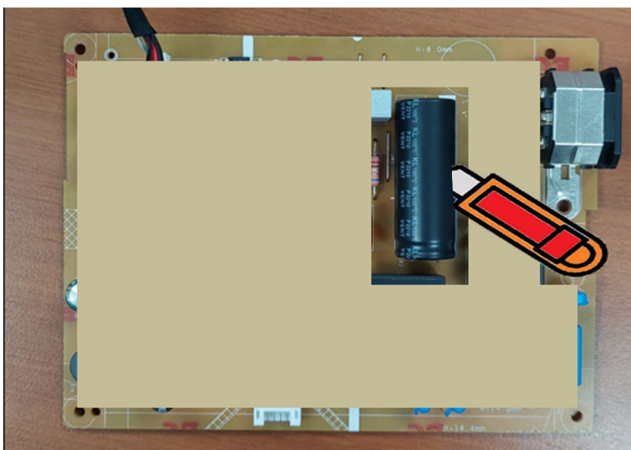
S22 Remove electrolyte capacitors (red mark) from printed circuit boards



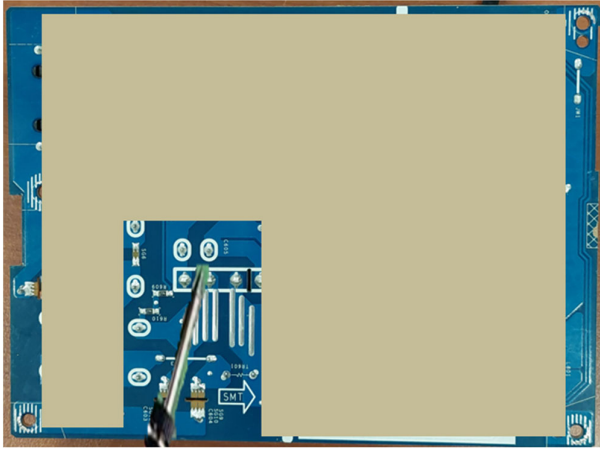
S22-1 Cut the glue between bulk cap. and PCB with a knife



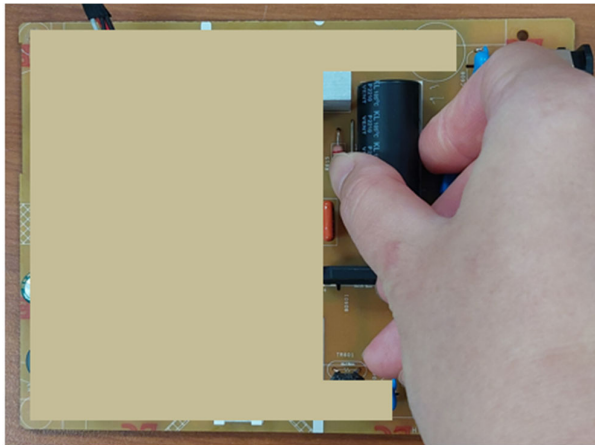
S22-2 Ensure cutting path within the glue, don't touch bulk cap. or PCB



S22-3 Take out bulk cap. pin solder with soldering iron and absorber



S22-4 Lift the bulk cap. up and away from the PCB



2. Product material information

The following substances, preparations, or components should be disposed of or recovered separately from other WEEE in compliance with Article 4 of EU Council Directive 75/442/EEC.

Capacitors / condensers (containing PCB/PCT)	No used
Mercury containing components	No used
Batteries	No used
Printed circuit boards (with a surface greater than 10 square cm)	Product has printed circuit boards (with a surface greater than 10 square cm)
Component contain toner, ink and liquids	No used
Plastic containing BFR	No used
Component and waste contain asbestos	No used
CRT	No used
Component contain CFC, HCFC, HFC and HC	No used
Gas discharge lamps	No used
LCD display > 100 cm ²	Product has an LCD greater than 100 cm ²
External electric cable	Product has external cables
Component contain refractory ceramic fibers	No used
Component contain radio-active substances	No used
Electrolyte capacitors (height > 25mm, diameter > 25mm)	Product has electrolyte capacitors (height >25mm, diameter > 25mm)

3. Tools Required

List the type and size of the tools that would typically can be used to disassemble the product to a point where components and materials requiring selective treatment can be removed.

Tool Description:

- Philips-head Screwdriver
- Penknife
- Bar scraper