

AXIS TP3004-E Wall Mount Black

Wall mount with 1.5" NPS thread

AXIS TP3004-E Wall Mount Black 1.5" NPS is compatible with Axis fixed dome pendant kits and ACI ¾" conduit adapters. The cables can be routed through the back or from the side using a conduit connection.

- > [Flexible cable routing](#)
- > [AXIS T91A6 Pipe Seal included](#)
- > [Aluminum](#)



AXIS TP3004-E Wall Mount Black

General

Supported products AXIS P32 Series (requires camera-specific pendant kit)
AXIS P37 Series (requires camera-specific pendant kit)
AXIS Q35 Series (requires camera-specific pendant kit)
AXIS Q36 Series (requires camera-specific pendant kit)

Dimensions 137.2 x 244.2 x 196.1 mm (5.40 x 9.61 x 7.72 in)

Weight 1.4 kg (3.1 lb)

Maximum load 15 kg (33 lb)

Cable routing Back: Cable hole
Side: Cable conduit holes M20 (3/4")

Material IK10-rated power-coated aluminum mount
Color: black NCS S 9000-N

Interface: 1.5" NPS

Environment Indoor
Outdoor

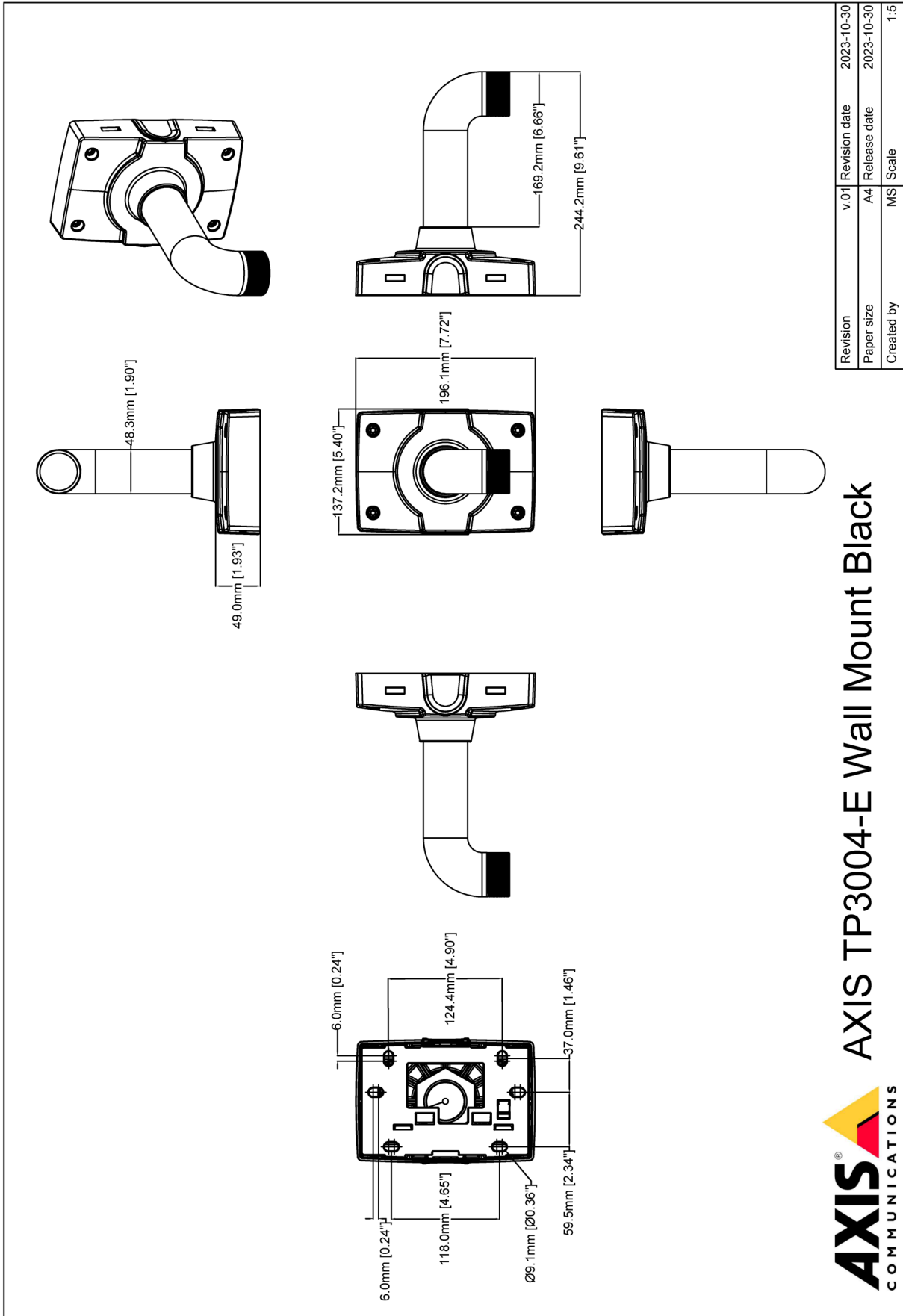
Approvals **Impact**
IEC 62262 IK10

Included accessories Installation Guide
AXIS T91A6 Pipe Seal

Optional accessories Axis network cable couplers, AXIS Conduit Adapter U-shape
30 mm A
For more accessories, see www.axis.com

Warranty 3-year warranty, see axis.com/warranty

General PVC free



Revision	v.01	Revision date	2023-10-30
Paper size	A4	Release date	2023-10-30
Created by	MS	Scale	1:5

© 2023 Axis Communications

AXIS COMMUNICATIONS **AXIS TP3004-E Wall Mount Black**

www.axis.com