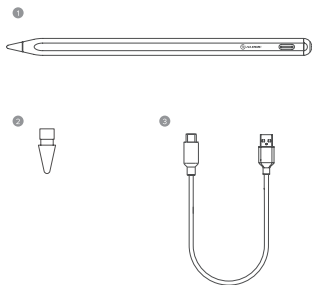
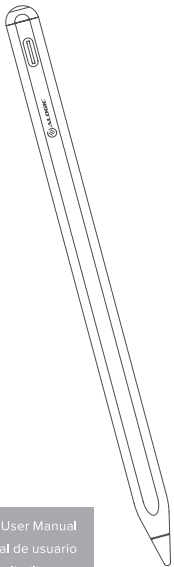




iPad™

Stylus Pen

with Wireless Charging



Package Contents | Contenido del Paquete | Contenu du Colis | Packungsinhalt | تايوت حوم | تايوت حوم | تايوت حوم | تايوت حوم | تايوت حوم | تايوت حوم

1	<ul style="list-style-type: none"> EN iPad™ Stylus Pen ES Lápiz óptico para iPad FR stylet pour iPad AR قلم إلكتروني للإيباد™ 	<ul style="list-style-type: none"> DE iPad™ Eingabestift IT penna stilo per iPad JP iPad™ スタイラスペン
2	<ul style="list-style-type: none"> EN Replaceable Tip ES Punta reemplazable FR Pointe remplaçable AR طرف قابل للتبديل 	<ul style="list-style-type: none"> DE Austauschbare Spitze IT Punta sostituibile JP 交換可能なチップ
3	<ul style="list-style-type: none"> EN USB Charging Cable ES Cable de carga USB FR Câble de charge USB AR كابل شحن يو إس بي (USB-C) 	<ul style="list-style-type: none"> DE USB-Ladekabel IT Cavo di ricarica USB JP USB充電ケーブル

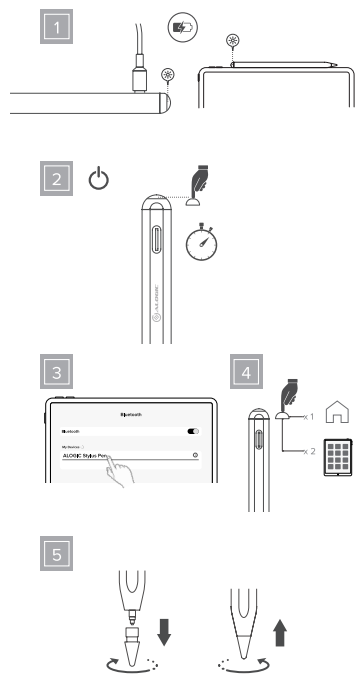
User Manual
Manual de usuario
Manual de l'utilisateur
Benutzerhandbuch
Manuale d'uso
دليل الاستخدام
ユーザーマニュアル



1	<ul style="list-style-type: none"> EN Quick Action Button ES Botón de acción rápida FR Bouton d'action rapide AR زر الإجراء السريع 	<ul style="list-style-type: none"> DE Schnellaste IT Pulsante di azione rapida JP クイックアクションボタン
2	<ul style="list-style-type: none"> EN LED Indicator ES Indicador LED FR Indicateur LED AR مؤشر الـ LED 	<ul style="list-style-type: none"> DE LED-Anzeige IT Indicatore LED JP LEDインジケータ
3	<ul style="list-style-type: none"> EN USB-C Charging Port ES Puerto de carga USB-C FR Port de chargement USB-C AR منفذ شحن يو إس بي (USB-C) 	<ul style="list-style-type: none"> DE USB-C Ladeanschluss IT Porta di ricarica USB-C JP USB-C充電ポート
4	<ul style="list-style-type: none"> EN Replaceable Tip ES Punta reemplazable FR Pointe remplaçable AR طرف قابل للتبديل 	<ul style="list-style-type: none"> DE Austauschbare Spitze IT Punta sostituibile JP 交換可能なチップ

Specifications | Especificación | Spécification | Spezifikation | Specificazione | 仕様 | 仕様 | 仕様 | 仕様 | 仕様 | 仕様

Model Modeli Modelo Modèle Modello 原形	ALIPSW
Device Compatibility Gerätekompatibilität Compatibilità de dispositivos Appareils Compatibles Compatibilità apparecchi 互換 互換 互換 互換 互換 互換	iPad Air (3rd Generation or later), iPad Mini (5th Generation or later), iPad (6th Generation or later), iPad Pro 11 inch, iPad Pro 12.9 inch (3rd Generation or later)



EN

Instructions

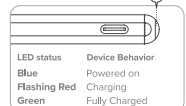
Important Note

Requires an iPad with iOS 12.2 or above. We recommend unpairing other Apple Pencils or styluses before use.

1 Charging

Before first use, charge the stylus via USB-C or by attaching to the side of an iPad that supports wireless charging.*

*iPad™ (6th Gen or later), iPad™ Mini 5, iPad™ Pro 7th Gen and iPad™ Air 3rd and 6th Gen do not support Wireless Charging.



Note:

The stylus will turn itself off after 5 minutes of inactivity.

2 Turning Stylus On and Off

Press and hold the button at the end of the stylus to switch it on or off, or connect it to the side of your wireless charging iPad.

3 Pairing

If your iPad supports Wireless Charging, simply attach the stylus to pair.

If not, select "ALOGIC Stylus Pen" in your iPad's Bluetooth menu.

4 iPad Shortcuts

Single Tap Button: Open Task Manager

Double Tap Button: Quick Screenshot

Press and hold the key: Turns the stylus on/off.

5 Replacing the Tip

Turn the tip counter clockwise to remove it, and clockwise to reinstall.

Warning

- This pen and its accessories include small parts which may create a choking hazard. Keep away from small children.
- This product contains a rechargeable battery and must not be disposed of with general waste. Dispose of the product through a local e-waste recycling program. Do not attempt to access or replace it - this is hazardous and will void its warranty.
- Do not expose the pen and battery to prolonged sunlight, water or excess heat - the battery may overheat and shorten its useful life, catch fire or explode.
- Avoid contact with skin or eyes if the battery leaks. If contact is made, please rinse with clean water immediately and seek proper medical treatment.
- ALOGIC bears no responsibility for damage to the device or incidental damages arising from improper use or lack of care and is not liable for repair/replacement of the device or other damages in these circumstances.

Regulatory notices

FCC Compliance Statement

FC This product complies with Part 15 of the FCC Rules. Operation is subject to the following two conditions:

- (1) this device may not cause harmful interference, and
- (2) this device must accept any interference received, including interference that may cause undesired operation.

NOTE: Changes or modifications not expressly approved by the party responsible for compliance could void the user's authority to operate the equipment.

The contact for US regulatory matters is ALOGIC USA LLC, 3730 Parish Ave, Fremont CA, 94536, USA

FCCID: 2ATCA-ALIPSW

Declaración de Cumplimiento FCC

FC Este dispositivo cumple con la Parte 15 de las reglas de la FCC. El funcionamiento está sujeto a las dos condiciones siguientes:

- (1) Este dispositivo puede no causar interferencias perjudiciales y
- (2) Este dispositivo debe aceptar cualquier interferencia recibida, incluidas las interferencias que puedan causar un funcionamiento no deseado.

NOTA: Cambios o modificaciones no aprobados expresamente por la parte responsable del cumplimiento pueden invalidar la autoridad del usuario para operar el equipo.

El contacto para asuntos regulatorios de EE. UU. es ALOGIC USA LLC, 3730 Parish Ave, Fremont CA, 94536, EE. UU.

Declaration of Conformity

CE This product complies with EU Directive 2014/53/EU and related UK statutory instruments as may be applicable.

The full text of the EU Declaration of Conformity can be obtained by visiting www.alogic.co and clicking on the Compliance Documentation link.

The contact for EU regulatory matters is ALOGIC Europe B.V., Krajenhofstraat 137A, 1018RG Amsterdam, Netherlands.

The contact for UK regulatory matters is ALOGIC UK Pvt Ltd, Level 3, Belmont, Belmont Road, Uxbridge, United Kingdom, UB8 3HE.

iPad™ is a trademark of Apple Inc., registered in the U.S. and other countries and regions.

© ALOGIC. All rights reserved. Reproduction in whole or in part without permission is prohibited. All other trademarks are the properties of their owners. Tested to comply with FCC and CE Standards. HOME OR OFFICE USE.

ALOGIC is the trademark of ALOGIC Corporation

ALOGIC USA LLC, California, United States
ALOGIC Electronics India Pvt Ltd, Mumbai, India
ALOGIC Corp Pty Ltd, Melbourne, VIC 3000, Australia
ALOGIC UK Pvt Ltd Belmont Road, Uxbridge, UB8 3HE, United Kingdom
ALOGIC International Ltd, 3A Chater Road, Central, Hong Kong
ALOGIC Electronics Canada Inc, British Columbia, Canada
ALOGIC Europe B.V., Amsterdam, Netherlands



Designed in Australia. Manufactured in China

