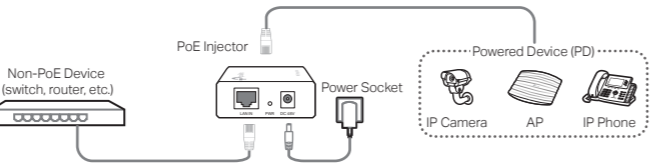


CONTENTS

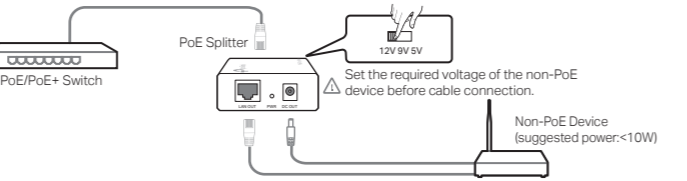
- 1 / English
- 3 / Español
- 5 / Français
- 7 / Português

English

PoE Injector Only The PoE Injector supplies steady power and data connectivity to a powered device through an Ethernet cable.



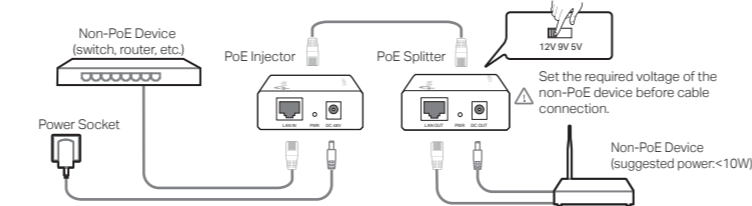
PoE Splitter Only The PoE Splitter can be used with a PoE/PoE+ switch to deliver direct current (DC) power and data to a Non-PoE device.



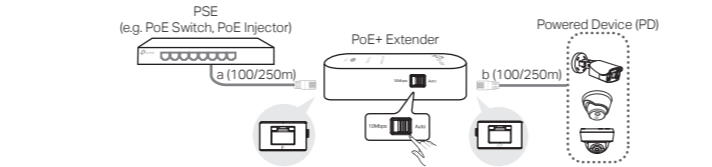
1

English

PoE Injector & Splitter The PoE injector and PoE splitter can be used as a kit to supply power and transmit data to a Non-PoE device.



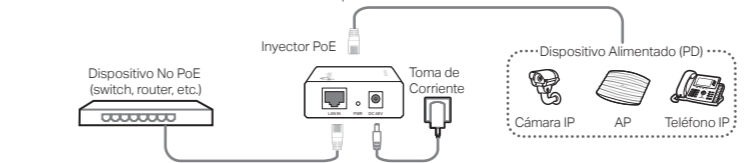
PoE Extender PoE Extender is used to extend the network connection from the PoE power source equipment.



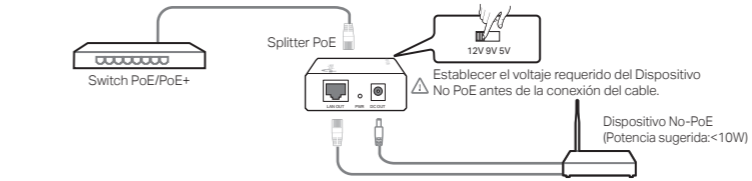
2

Español

Únicamente Inyector PoE El inyector PoE suministra corriente eléctrica estable y conectividad de datos a un dispositivo alimentado mediante un cable Ethernet.



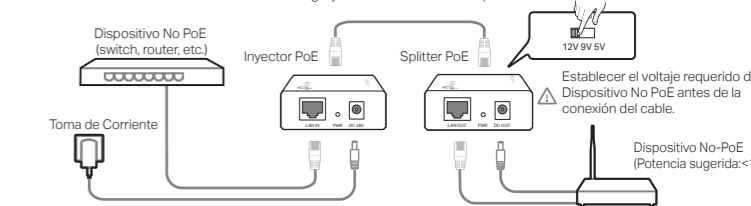
Únicamente Splitter PoE El Splitter PoE puede ser usado con un switch PoE/PoE+ para entregar corriente directa (DC) y datos a un Dispositivo No PoE.



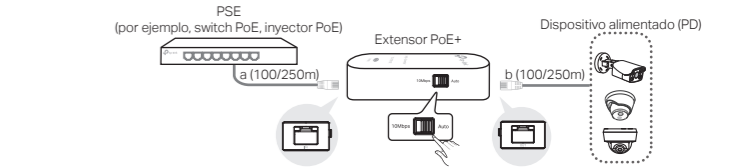
3

Español

Inyector y Splitter PoE El inyector PoE y el Splitter PoE pueden ser usados como un kit para suministrar energía y transmitir datos a un Dispositivo No PoE.

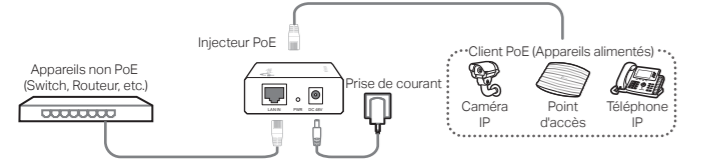


Extensor PoE El Extensor PoE se utiliza para ampliar la conexión de red desde el equipo de fuente de alimentación PoE.

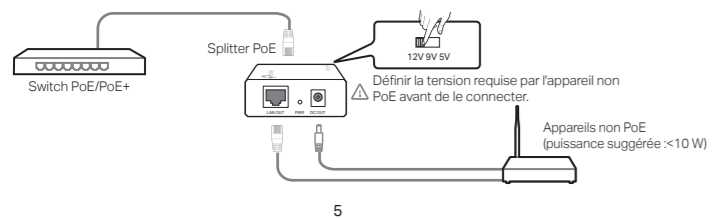


4

Injecteur PoE L'injecteur PoE fournit une alimentation stable et la connectivité réseau à un appareil alimentable par un cordon Ethernet.

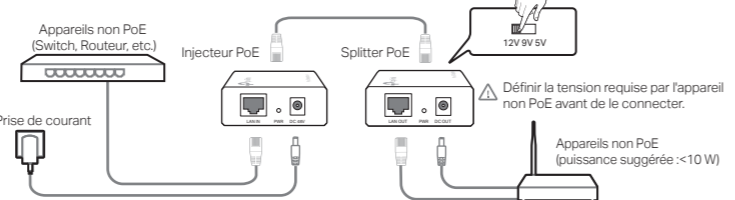


Splitter PoE Le splitter PoE (...) peut être utilisé avec un switch PoE/PoE+ pour alimenter un appareil réseau non PoE en données et en courant continu (CC).

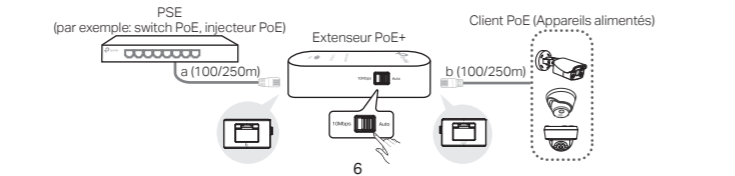


5

Injecteur et Splitter PoE L'injecteur et le splitter PoE peuvent être utilisés tel un kit pour alimenter et relier un appareil réseau non PoE.

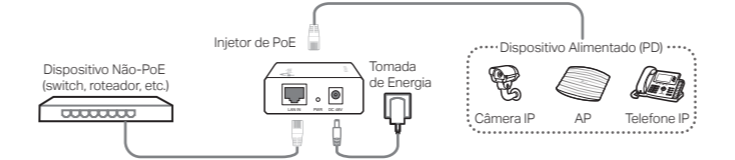


Extenseur PoE L'extenseur PoE est utilisé pour étendre la connexion réseau à partir de l'équipement de source d'alimentation PoE.

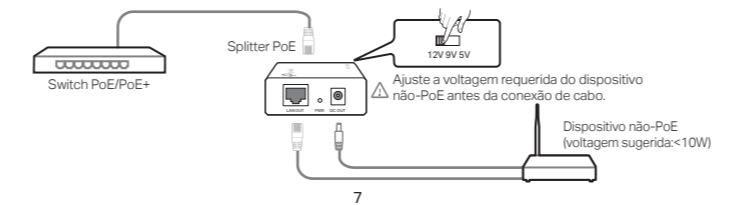


6

Somente Injetor PoE O Injetor PoE oferece energia estável e conectividade de dados à um dispositivo alimentado por um cabo Ethernet.

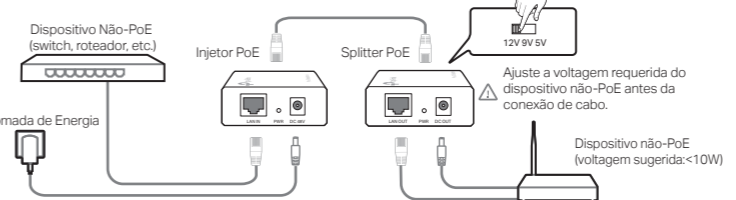


Somente Splitter PoE O Splitter PoE pode ser utilizado com um switch para oferecer corrente direta (DC) e dados para um dispositivo não-PoE.

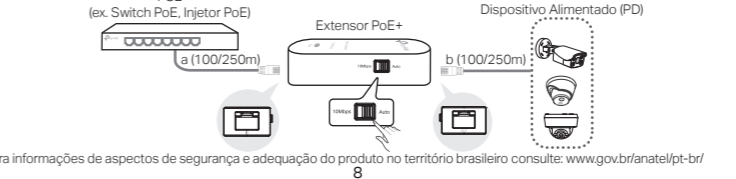


7

Splitter e Injetor PoE O injetor e o splitter PoE podem ser utilizados como um kit para suprir energia e transmitir dados para um dispositivo não-PoE.



Extensor PoE Extensor PoE é usado para estender a conexão de rede a partir de um dispositivo com fonte PoE.



8

Para informações de aspectos de segurança e adequação do produto no território brasileiro consulte: www.gov.br/anatel/pt-br/



Installation Guide Guía de Instalación Guide d'installation Guia de Instalação

PoE Injector
PoE Splitter
PoE Extender

*Images may differ from actual products.
©2023 TP-Link 7106510594 REV1.1.1