

USER MANUAL

ProLite

LCD Monitor

ENGLISH

ProLite T1532MSC
ProLite T1732MSC
ProLite T1932MSC

Thank you very much for choosing the iiyama LCD monitor.

We recommend that you take a few minutes to read this comprehensive manual carefully before installing and switching on the monitor. Please keep this manual in a safe place for your future reference.



Dear user, we congratulate you on the purchase of your iiyama LCD.

For details on warranty and locally used pixel policies that apply directly after installation of your product please check the iiyama website.

To report a fault, please contact your local support centre found at <https://iiyama.com>

Things to check before you call the iiyama information line

- | if the power cable is connected securely and turned on?
- | if the display has been turned on?
- | if the signal cable is connected securely and the correct input selected?
- | if the computer has been restarted with the display connected?
- | if the graphics card is correctly installed with the latest drivers possible?
- | if the correct native resolution has been selected via 'Display Properties'?
- | If the R/G/B signal configuration is correct?
- | if the displays On Screen Menu is shown?
- | if the correct brightness and contrast settings have been set?
- | if given display tolerances and compatibility have been considered?
- | if via the On Screen Menu you have performed a Factory Reset/Recall?

Before reporting the screen defect, please prepare the following information/evidence:

- | model number *
- | purchase receipt and serial number *
- | name and address for collection
- | telephone/fax number, for availability during the day
- | convenient collection date (date, time)
- | short description of the defect

Important Note:

If there is no fault found in the collected equipment after inspection, the transferring party shall incur charges for transport and administration.

If you have checked all of the above and there is still no picture, call our information line for assistance in your country.

* see the identification plate on the back of the case.

CE MARKING DECLARATION OF CONFORMITY

This LCD monitor complies with the requirements of the EC/EU Directive 2014/30/EU "EMC Directive", 2014/35/EU "Low Voltage Directive", 2009/125/EC "ErP Directive" and 2011/65/EU "RoHS Directive".

The electro-magnetic susceptibility has been chosen at a level that gives correct operation in residential areas, business and light industrial premises and small-scale enterprises, inside as well as outside of the buildings. All places of operation are characterised by their connection to the public low voltage power supply system.

IYYAMA CORPORATION: Wijkemeerstraat 8, 2131 HA Hoofddorp, The Netherlands

Model No. : PLT1532M / PLT1732M / PLT1932M



We recommend recycling of used product. Please contact your dealer or iiyama service center. Recycle information is obtained via the Internet, using the address: <https://iiyama.com>

You can access the Web page of different countries from there.

- We reserve the right to change specifications without notice.
- All trademarks used in this user manual are the property of their respective owners.
- Eprel registration number

T1532MSC-B1S : 1547232, T1532MSC-B1SAG : 1547271

T1732MSC-B1S : 1518676, T1732MSC-B1SAG : 1518684, T1732MSC-W1SAG : 1552276

T1932MSC-B1S : 1519005, T1932MSC-B1SAG : 1519095, T1932MSC-W1SAG : 1519102

TABLE OF CONTENTS

| | |
|---|----|
| FOR YOUR SAFETY..... | 1 |
| SAFETY PRECAUTIONS..... | 1 |
| SPECIAL NOTES ON LCD MONITORS..... | 3 |
| CUSTOMER SERVICE..... | 3 |
| CLEANING..... | 3 |
| BEFORE YOU OPERATE THE MONITOR..... | 4 |
| FEATURES..... | 4 |
| CHECKING THE CONTENTS OF THE PACKAGE..... | 5 |
| SPECIAL NOTES ON TOUCH PANEL..... | 5 |
| INSTALLATION..... | 6 |
| CONTROLS AND CONNECTORS..... | 7 |
| CONNECTING YOUR MONITOR..... | 8 |
| COMPUTER SETTING..... | 9 |
| ADJUSTING THE VIEWING ANGLE..... | 11 |
| OPERATING THE MONITOR..... | 12 |
| ADJUSTMENT MENU CONTENTS..... | 14 |
| SCREEN ADJUSTMENTS..... | 18 |
| STANDBY FEATURE..... | 21 |
| TROUBLE SHOOTING..... | 22 |
| RECYCLING INFORMATION..... | 23 |
| APPENDIX..... | 24 |
| SPECIFICATIONS : ProLite T1532MSC..... | 24 |
| SPECIFICATIONS : ProLite T1732MSC..... | 26 |
| SPECIFICATIONS : ProLite T1932MSC..... | 27 |
| DIMENSIONS : ProLite T1532MSC..... | 29 |
| DIMENSIONS : ProLite T1732MSC..... | 29 |
| DIMENSIONS : ProLite T1932MSC..... | 29 |
| COMPLIANT TIMING..... | 30 |

FOR YOUR SAFETY

SAFETY PRECAUTIONS

WARNING

STOP OPERATING THE MONITOR WHEN YOU SENSE TROUBLE

If you notice any abnormal phenomena such as smoke, strange sounds or fumes, unplug the monitor and contact your dealer or iiyama service center immediately. Further use may be dangerous and can cause fire or electric shock.

NEVER REMOVE THE CABINET

High voltage circuits are inside the monitor. Removing the cabinet may expose you to the danger of fire or electric shock.

DO NOT PUT ANY OBJECT INTO THE MONITOR

Do not put any solid objects or liquids such as water into the monitor. In case of an accident, unplug your monitor immediately and contact your dealer or iiyama service center. Using the monitor with any object inside may cause fire, electric shock or damage.

INSTALL THE MONITOR ON A FLAT, STABLE SURFACE

The monitor may cause an injury if it falls or is dropped.

DO NOT USE THE MONITOR NEAR WATER

Do not use where water may be splashed or spilt onto the monitor as it may cause fire or electric shock.

OPERATE UNDER THE SPECIFIED POWER SUPPLY

Be sure to operate the monitor only with the specified power supply. Use of an incorrect voltage will cause malfunction and may cause fire or electric shock.

PROTECT THE CABLES

Do not pull or bend the power cable and signal cable. Do not place the monitor or any other heavy objects on the cables. If damaged, the cables may cause fire or electric shock.

ADVERSE WEATHER CONDITIONS

It is advisable not to operate the monitor during a heavy thunder storm as the continual breaks in power may cause malfunction. It is also advised not to touch the plug in these circumstances as it may cause electric shock.

CAUTION

INSTALLATION LOCATION

Do not install the monitor where sudden temperature changes may occur, or in humid, dusty or smoky areas as it may cause fire, electric shock or damage. You should also avoid areas where the sun shines directly on the monitor.

DO NOT PLACE THE MONITOR IN A HAZARDOUS POSITION

The monitor may topple and cause injury if not suitably located. Please also ensure that you do not place any heavy objects on the monitor, and that all cables are routed such that children may not pull the cables and possibly cause injury.

MAINTAIN GOOD VENTILATION

Ventilation slots are provided to keep the monitor from overheating. Covering the slots may cause fire. To allow adequate air circulation, place the monitor at least 10cm (or 4 inches) from any walls.

When removing the tilt stand, the ventilation slots on the back side of the monitor can be blocked. This may overheat the monitor and may cause fire or damage. Make sure to allow enough ventilation when removing the tilt stand. Operating the monitor on its back, side, upside down or on a carpet or any other soft material may also cause damage.

DISCONNECT THE CABLES WHEN YOU MOVE THE MONITOR

When you move the monitor, turn off the power switch, unplug the monitor and be sure the signal cable is disconnected. If you do not disconnect them, it may cause fire or electric shock.

UNPLUG THE MONITOR

If the monitor is not in use for a long period of time it is recommended that it is left unplugged to avoid accidents.

HOLD THE PLUG WHEN DISCONNECTING

To disconnect the power cable or signal cable, always pull it by the plug. Never pull on the cable itself as this may cause fire or electric shock.

DO NOT TOUCH THE PLUG WITH WET HANDS

Pulling or inserting the plug with wet hands may cause electric shock.

WHEN YOU INSTALL THE MONITOR ON YOUR COMPUTER

Be sure the computer is strong enough to hold the weight of the monitor, otherwise, you may damage your computer.

REMARK FOR 24/7 USAGE

This product is not specifically designed for 24/7 usage in all environments.

OTHERS

ERGONOMIC RECOMMENDATIONS

To eliminate eye fatigue, do not operate the monitor against a bright background or in a dark room. For optimal viewing comfort, the monitor should be just below eye level and 40-60 cm (16-24 inches) away from your eyes. When using the monitor over a prolonged time, a ten minute break every hour is recommended as looking at the screen continuously can cause eye strain.

SPECIAL NOTES ON LCD MONITORS

The following symptoms are normal with LCD monitors and do not indicate a problem.

NOTE

- When you first turn on the LCD monitor, the picture may not fit in the display area because of the type of computer that is used. In this case, adjust the picture position to the correct position.
- You may find slightly uneven brightness on the screen depending on the desktop pattern you use.
- Due to the nature of the LCD screen, an afterimage of the previous screen may remain after switching the image, when the same image is displayed for hours. In this case, the screen is recovered slowly by changing the image or turning off the Power Switch for hours.
- Contact your dealer or iiyama service center for the backlight replacement when the screen is dark, flickering or not lighting up. Never attempt to replace it by yourself.

CUSTOMER SERVICE

NOTE

- The fluorescent light used in the LCD monitor may have to be periodically replaced. For the warranty coverage on this component, please check with local iiyama service center.
- If you have to return your unit for service and the original packaging has been discarded, please contact your dealer or iiyama service center for advice or replacement packaging.

CLEANING

WARNING

- If you drop any materials or liquids such as water into the monitor when cleaning, unplug the power cable immediately and contact your dealer or iiyama service center.

NOTE

- To protect the Touch screen surface, do not scratch or rub the screen with a hard object.
- Never use any of the following strong solvents. These will damage the cabinet and the Touch screen surface.
Abrasive cleaner Wax Solvent
- Touching the cabinet with any product made from rubber or plastic for a long time may cause degeneration or loss of paint on the cabinet.

CABINET

Stains can be removed with a cloth lightly moistened with a mild detergent solvent. Then wipe the cabinet with a soft dry cloth.

TOUCH SCREEN

Touch screen surface may be cleaned using a soft clean cloth moistened with mild window glass commercial cleaners or 50/50 mixture of water and isopropyl alcohol.

BEFORE YOU OPERATE THE MONITOR

FEATURES

- ◆ Supports Resolutions up to 1024 × 768 : ProLite T1532MSC
- ◆ Supports Resolutions up to 1280 × 1024 : ProLite T1732MSC / ProLite T1932MSC
- ◆ High Contrast 800:1 (Typical) / Brightness 315cd/m² (Typical: with Touch panel) : ProLite T1532MSC-B1S
- ◆ High Contrast 800:1 (Typical) / Brightness 330cd/m² (Typical: with Touch panel) : ProLite T1532MSC-B1SAG
- ◆ High Contrast 1000:1 (Typical) / Brightness 225cd/m² (Typical: with Touch panel) : ProLite T1732MSC-B1S / ProLite T1932MSC-B1S
- ◆ High Contrast 1000:1 (Typical) / Brightness 215cd/m² (Typical: with Touch panel) : ProLite T1732MSC-B1SAG / ProLite T1732MSC-W1SAG / ProLite T1932MSC-B1SAG / ProLite T1932MSC-W1SAG
- ◆ Digital Character Smoothing
- ◆ Automatic Set-up
- ◆ Stereo Speakers
2 × 1W Stereo Speakers
- ◆ Standby Feature
- ◆ VESA Mounting Standard (100mm×100mm) Compliant
- ◆ Keyhole for Security Lock
- ◆ IP54 Standard Compliant (Only front face)
- ◆ Glass with AG coating :
ProLite T1532MSC-B1SAG / ProLite T1732MSC-B1SAG / ProLite T1732MSC-W1SAG /
ProLite T1932MSC-B1SAG / ProLite T1932MSC-W1SAG

■ Windows 8/8.1/10 touch environment

Basic touch operations can be performed under Windows 8/8.1/10.

However, please be informed that full touch functionality and normal operational performance are not guaranteed.

CHECKING THE CONTENTS OF THE PACKAGE

The following accessories are included in your package. Check to see if they are enclosed with the monitor. If anything is missing or damaged, please contact your local iiyama dealer or regional iiyama office.

- Power Cable*
- USB Cable
- Stand-Base with a screw
- Safety Guide
- HDMI Cable
- Audio Cable
- Cable Cover Screw (M3x6mm 1pcs)
- Quick Start Guide
- DisplayPort Cable
- Stand-Neck with a screw
- Screwdriver

CAUTION

* The rating of the Power Cable enclosed in 120V area is 10A/125V. If you are using a power supply higher than this rating, then a power cable with a rating of 10A/250V must be used. However, all guarantees and warranties are void for any problems or damage caused by a power cable not supplied by iiyama.
An approved power cable greater or equal to H05VVf, 3G, 0.75mm² must be used.

SPECIAL NOTES ON TOUCH PANEL

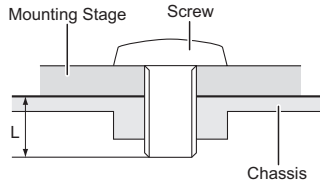
Permanent damage can occur if Sharp Edged, Pointed or Metal items are used to activate Touch. This could invalidate any remaining warranty.
We recommend to use a plastic stylus (tip R0.8 or over) or finger.

INSTALLATION

- CAUTION** ■ Before installation, make sure the wall, ceiling or desktop arm is strong enough to hold the necessary weight of the display and the mount.

< WALL MOUNTING >

- CAUTION** When you use with the wall mounting, in consideration of thickness of the mounting stage, tighten the M4 Screws (4pcs) which “L” length is 8mm to fasten the monitor. Using the screw longer than this may cause electric shock or damage because it may contact with the electrical parts inside the monitor.

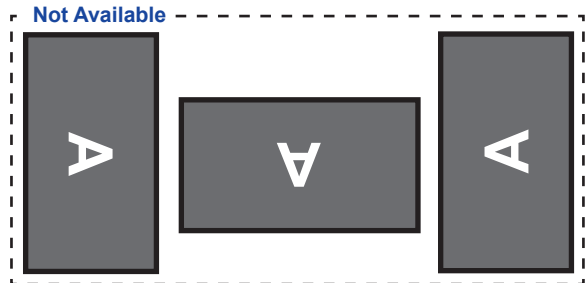
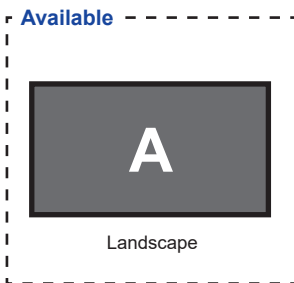


< BUILT-IN EQUIPMENT >

- CAUTION** This product is not designed for the purpose of being used in high temperature environment.
- If the product is placed in an external cabinet, you need to design cooling fans and vents to keep the temperature low enough to fit in the product temperature specification.

< ROTATING THE MONITOR >

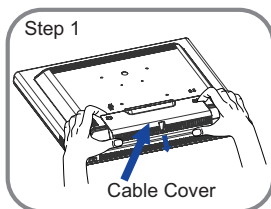
It is designed to be compatible in landscape mode.



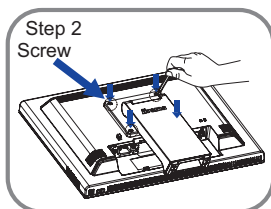
FITTING AND REMOVAL OF STAND AND CABLE COVER

< Fitting >

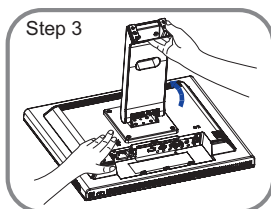
- ① Put a piece of soft cloth on the table beforehand to prevent the monitor from being scratched.
Lay the monitor flat on a table with front face down.
- ② As shown in Step1, remove the cable cover.



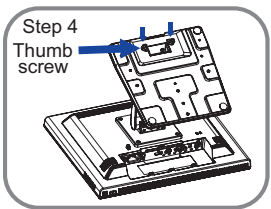
- ③ As shown in Step2, attach the Stand-Neck to the monitor and then tighten the 'screw' with the provided screwdriver to secure them.



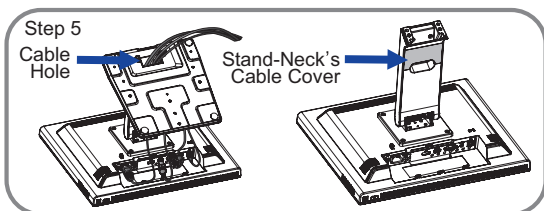
- ④ As shown in Step3, move the stand-neck into position.



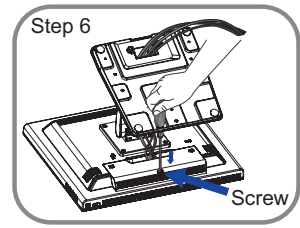
- ⑤ As shown in Step4, install the Stand-Base to the Stand-Neck and then tighten the 'thumb screw' to secure them.



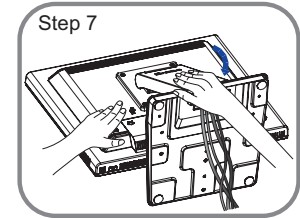
- ⑥ As shown in Step5, connect the cables and put those through the cable hole.
Removing the stand-neck's cable cover makes it easier to pass through.



- ⑦ As shown in Step6, place the cable cover and then tighten the 'screw' with screwdriver to secure them.



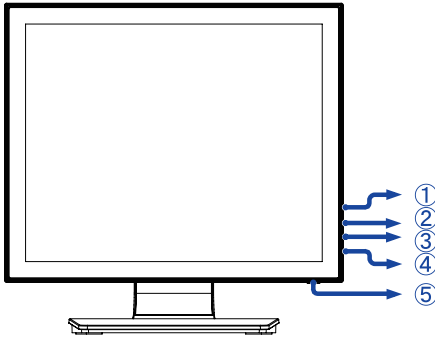
- ⑧ As shown in Step7, pressing the stand back.



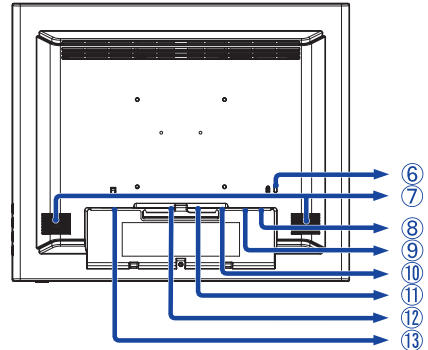
< Removal >

- ① Put a piece of soft cloth on the table beforehand to prevent the monitor from being scratched. Lay the monitor flat on a table with front face down.
- ② Lift the stand.
- ③ Loosen the screw and remove the cable cover.
- ④ Remove the cables.
- ⑤ Loosen the 'thumb screw' to remove the Stand-Base from the stand-neck.
- ⑥ Loosen the 'screw' with screwdriver to remove the Stand-Neck from the monitor.
- ⑦ Place the cable cover and then tighten the 'screw' with screwdriver to secure them.





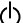
CONTROLS AND CONNECTORS



<Front>



<Back>

- ① Menu Button ()
- ② Scroll Up / Brightness Button ()
- ③ Scroll Down / Mute Button ()
- ④ Select Button ()
- ⑤ Power Switch ()
- ⑥ Keyhole for Security Lock

NOTE You can fasten a security lock and cable to prevent the monitor from being removed without your permission.

- ⑦ Speakers
- ⑧ USB Connector (USB)
- ⑨ Audio Connector (AUDIO)
- ⑩ VGA Connector (VGA)
- ⑪ HDMI Connector (HDMI)
- ⑫ DisplayPort Connector (DP)
- ⑬ AC Connector (~ : Alternating current) (AC IN)

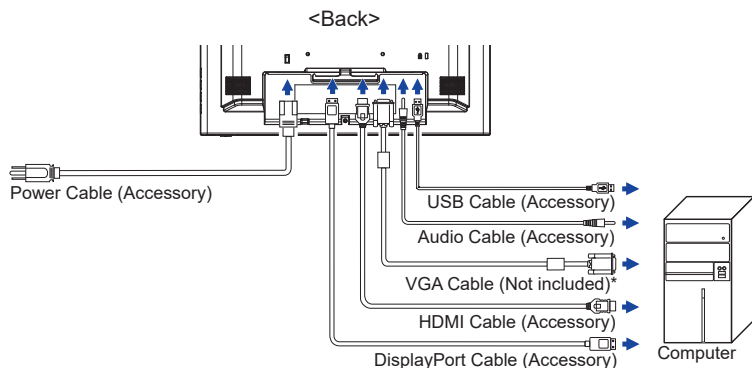
CONNECTING YOUR MONITOR

- ① Ensure that both the computer and the monitor are switched off.
- ② Connect the computer to the monitor with the signal cable.
- ③ Connect the computer to the monitor with the USB Cable.
- ④ Connect the monitor to the audio equipment with the Audio Cable for computer when using the audio features.
- ⑤ Connect the Power Cable to the monitor first and then to the power source.
- ⑥ Turn on your monitor and computer.

NOTE

- Make sure that the building installation has a circuit breaker of 120/240V, 20A (maximum).
- The signal cables used for connecting the computer and monitor may vary with the type of computer used. An incorrect connection may cause serious damage to both the monitor and the computer. The cable supplied with the monitor is for a standard connector. If a special cable is required please contact your local iiyama dealer or regional iiyama office.
- Make sure you tighten the finger screws at each end of the Signal Cable.
- The Class I pluggable equipment Type A must be connected to protective earth.
- The socket-outlet shall be installed near the equipment and shall be easily accessible.

[Example of Connection]



* VGA cable is not supplied with the monitor. If you use low quality VGA cable, it may cause a result of electro-magnetic interference. Please contact the iiyama Support Centre in your country if you wish to connect the monitor via the VGA input.

COMPUTER SETTING

■ Signal Timing

Change to the desired signal timing listed on page 30: COMPLIANT TIMING.

■ Windows XP/Vista/7/8/8.1/10 Plug & Play

The iiyama LCD monitor complies with DDC2B of VESA standard. The Plug & Play function runs on Windows XP/Vista/7/8/8.1/10 by connecting the monitor to DDC2B compliant computer with the Signal Cable supplied.

For installation on Windows XP: The monitor Information File for iiyama monitors may be necessary for your computer and obtained via the Internet, using the address:

<https://iiyama.com>

NOTE

- For additional information on how to download the driver for your touch screen monitor, please access the internet site noted above.
- Monitor Drivers are not required in most cases for Macintosh or Unix operating systems. For further information, please contact your computer dealer first for advice.

■ Procedure for turning ON the Power Switch

Turn ON the monitor first, and then the computer.

■ Touch screen driver software

Touch screen driver software and system may not start when you start your computer while touching the screen.

Touch screen driver software may not run due to the power saving function depending on the BIOS of your computer. In this case, set the power saving function to off.

■ TOUCH support operation system

Microsoft Windows XP (64 bit and 32 bit)

Microsoft Windows Vista (64 bit and 32 bit)

Microsoft Windows 7 (64 bit and 32 bit)

Microsoft Windows 8 / 8.1 / 10 (64 bit and 32 bit)

Microsoft Windows CE 2.13 / 3.0, net 6.0

Mac OS X V10.4/10.5/10.6 & above

Linux (Kernel2.4, 2.6x) & above

Not support earlier versions.

| | Windows8/8.1/10 | Windows7* ⁵ | Windows7* ⁴ | Vista | XP |
|---------------------------------|-----------------|------------------------|------------------------|-------|----|
| Default mouse* ¹ | ○ | ○ | ○ | ○ | ○ |
| Touch digitizer* ² | ○ | ○ | ○ | ○ | × |
| Windows7 gestures* ³ | ○ | ○ | × | × | × |

| | 2K | Windows CE | XP Embedded | Mac OS X | Linux |
|---------------------------------|----|------------|-------------|----------|-------|
| Default mouse* ¹ | ○ | ○ | ○ | ○ | ○ |
| Touch digitizer* ² | × | × | × | × | × |
| Windows7 gestures* ³ | × | × | × | × | × |

*¹ Default mouse (click, drag, double-click and right-click)

*² Touch digitizer (click, drag /selection, double-click, right-click, flick and visual feedback)

*³ Digitizer with Windows7 touch gestures

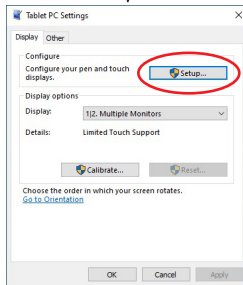
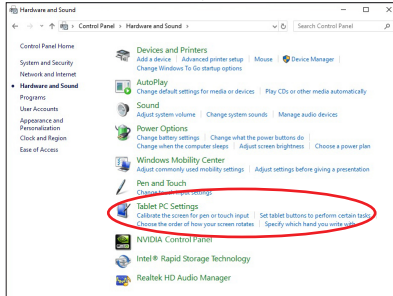
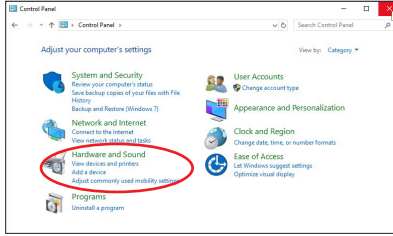
*⁴ Windows 7 - Starter and Home Basic version

*⁵ Windows 7 - Home Premium, Professional, Enterprise and Ultimate versions

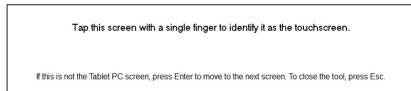
■ Touch Input Settings in Dual Screen Mode

① Connect the primary monitor to the computer first.

Set Control Panel > Hardware and Sound > Tablet PC Settings > Display > Setup.



The following message will appear on the screen. Please follow the instructions.



② After setting ①, connect a second monitor and perform the setup as in ①.

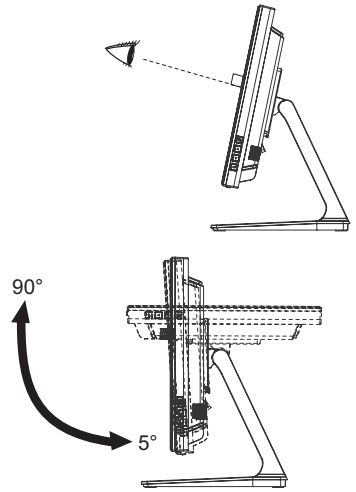
NOTE The monitors are recognized as dual-display, and touch operation cannot be performed on two monitors at the same time.
You can perform touch operation on only one of the monitors.

ADJUSTING THE VIEWING ANGLE

- For optimal viewing it is recommended to look at the full face of the monitor.
- Hold the panel so that the monitor does not topple when you change the monitor's angle.
- You are able to adjust the monitor's angle up to 90 degrees upward, 5 degrees downward.


NOTE

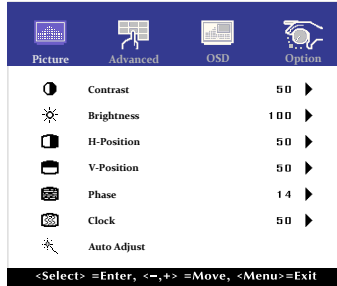
- Do not touch the LCD screen when you change the angle. It may cause damage or break the LCD screen.
- Careful attention is required not to pinch your fingers or hands into the moving part of the stand when you change the angle.






OPERATING THE MONITOR

To create the best picture, your iiyama LCD monitor has been preset at the factory with the COMPLIANT TIMING shown on page 30. You are also able to adjust the picture by following the button operation shown below. For more detailed adjustments, see page 18 for SCREEN ADJUSTMENTS.

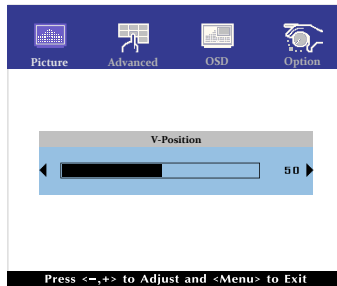
- 1 Press the  Button to start the On Screen Display feature. There are additional Menu items which can be switched by using the Δ / ∇ Buttons.




- 2 Select the Menu item which contains the adjustment icon relating to the adjustment you want to make. Use the  Button to highlight the desired adjustment icon.
- 3 Use the Δ / ∇ Buttons to make the appropriate adjustment or setting.
- 4 Press the  Button to leave the menu, and the settings you just made would be automatically saved.


For example, to correct for vertical position, select Menu item of Picture. Then, select V-Position by using the  Button.

Use the Δ / ∇ Buttons to change the vertical position settings. The vertical position of the overall display should be changing accordingly while you are doing this.




Press the  Button lastly, it ends, all changes are saved in the memory.



NOTE

- When button operations are aborted during adjustment, On-Screen Display disappears when the time set for the OSD Timeout has passed.
-  button can be used to return previous menu item.
- Any changes are automatically saved in the memory when the On Screen Display disappears. Turning off the power should be avoided while using the Menu.
- Adjustments for H/V-Position, Clock and Phase are saved for each signal timing. Except for these adjustments, all other adjustments have only one setting which applies to all signal timings.

Direct

- LOCK MODE:

Simultaneously press the  button and the  button when an image is displayed through VGA, HDMI or DisplayPort.



* The OSD menu is not displayed when the OSD is locked. Press the  button and the  button simultaneously again.



The following OSD menu is displayed.

| Adjustment Item | Problem / Option | |
|-----------------|------------------|-------------------------------|
| POWER | Active | The POWER SWITCH is Locked. |
| | Inactive | The POWER SWITCH is Unlocked. |
| OSD | Active | The OSD menu is Locked. |
| | Inactive | The OSD menu is Unlocked. |

NOTE When the lock function is enabled and there is no signal (standby mode), pressing the menu button displays the input selection menu and enables input selection.

- TOUCH FUNCTION DISABLE:

ON: Pressing and holding of the  Button and the  Button at the same time when the Menu is not displayed, message "TOUCH DISABLE" will appear on the top right corner.

OFF: Pressing and holding of the  Button and the  Button at the same time for about 5 seconds when the Menu is not displayed, till "TOUCH DISABLE" disappears.

ADJUSTMENT MENU CONTENTS

| Picture | | | |
|-----------------------------|---|-----------------|--|
| Adjustment Item | Problem / Option | Button to Press | |
| Contrast | Too dull Too intense | | |
| | | | |
| Brightness* ¹ | Too dark Too bright | | |
| | | | |
| H-Position* ⁴ | Too left Too right | | |
| | | | |
| V-Position* ⁴ | Too low Too high | | |
| | | | |
| Phase* ^{2,4} | To correct flickering text or lines | | |
| | | | |
| Clock* ^{2,4} | Too narrow Too wide | | |
| | | | |
| Auto Adjust* ^{3,4} | Adjust H/V-Position, Clock and Phase automatically. | | |

*¹ Adjust the Brightness when you are using the monitor in a dark room and feel the screen is too bright.

*² See page 18 for SCREEN ADJUSTMENTS.

*³ For best results, use the Auto Adjust in conjunction with the adjustment pattern. See page 18 for SCREEN ADJUSTMENTS.

*⁴ Only Analog Input.

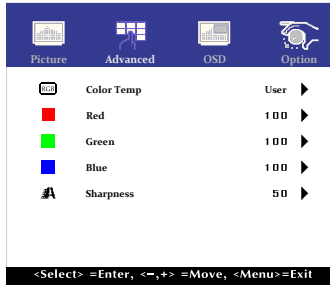
Direct

You can skip the Menu items and directly display an adjustment scale by using the following button operations.

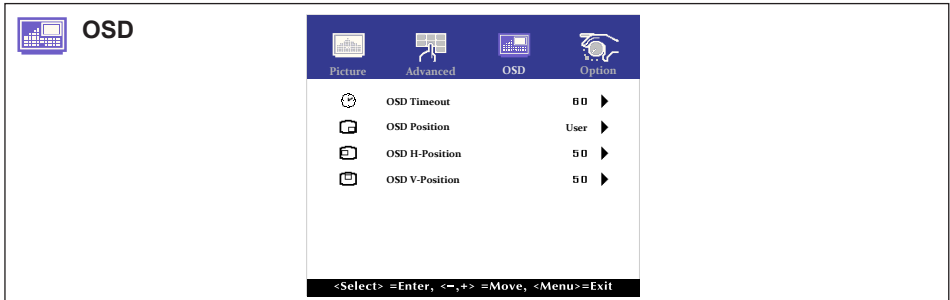
- Brightness: Press the Button when the Menu is not displayed.



Advanced



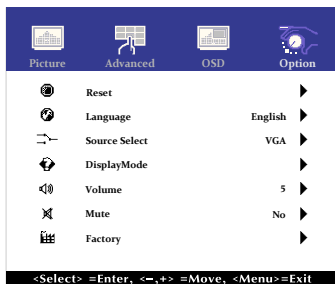
| Adjustment Item | Problem / Option | | Button to Press | | | |
|-----------------|---|---|-----------------|----------|--|-------|
| Color Temp | 5500 | Greenish white | | | | |
| | 6500 | Reddish white | | | | |
| | 7500 | Yellowish white | | | | |
| | 9300 | Bluish white | | | | |
| | User | <table border="1"> <tr> <td>Red</td> <td rowspan="3">Too weak</td> <td rowspan="3"> </td> </tr> <tr> <td>Green</td> </tr> <tr> <td>Blue</td> </tr> </table> | Red | Too weak | | Green |
| Red | Too weak | | | | | |
| Green | | | | | | |
| Blue | | | | | | |
| | Too strong | | | | | |
| Sharpness | <p>You can change the picture quality from 0 to 100 (soft to sharp). Press the Button to change the picture quality in numerical order. Press the Button to change the picture quality in reverse numerical order. Adjust the picture quality at resolutions of less 1024 x 768(ProLite T1532MSC),1280 x 1024(ProLite T1732MSC/ProLite T1932MSC). You can change the picture quality.</p> | | | | | |



| Adjustment Item | Problem / Option | Button to Press |
|-----------------|---|-----------------|
| OSD Timeout | You can set the OSD display duration time between 5 and 60 seconds. | |
| OSD Position | You can set the OSD position. User (Upper left / Lower left / Upper right / Lower right / Center) | |
| OSD H-Position | OSD is too left OSD is too right | |
| OSD V-Position | OSD is too low OSD is too high | |



Option



| Adjustment Item | Problem / Option | | Button to Press | |
|-----------------------------|---|--|-----------------|---------------------|
| Reset | No | Return to Menu. | | |
| | Yes | Factory-preset data is restored. | | |
| Language | English | English | Español | Spanish |
| | Français | French | 日本語 | Japanese |
| | Deutsch | German | 繁體中 | Traditional Chinese |
| | Italiano | Italian | 簡中 | Simplified Chinese |
| Source Select Direct | Auto | Search for an available input source and select automatically. | | |
| | VGA | Select the analog input. | | |
| | HDMI | Select the digital(HDMI) input. | | |
| | DP | Select the digital(DisplayPort) input. | | |
| Display Mode | Displays information regarding the current input signal coming from the graphic card in your computer. | | | |
| | NOTE See your graphic card user guide for more information about changing the resolution and refresh. | | | |
| Volume | Too soft | | | |
| | Too loud | | | |
| Mute Direct | No | Return the sound volume to the previous level. | | |
| | Yes | Turn off the sound temporarily. | | |
| Factory | This function is for service personnel only and therefore the operation is not available. | | | |

Direct

You can skip the Menu items and directly display an option setting screen by using the following button operations.

- Source Select : Pressing the Button during standby mode, the Source selected menu will be displayed.
- Mute : Press the Button when the Menu is not displayed.

SCREEN ADJUSTMENTS

Adjust the image by following the procedure below to get the desired picture when selecting Analog input.

- The screen adjustments described in this manual are designed to set image position and minimize flicker or blur for the particular computer in use.
- ProLite T1532MSC is designed to provide the best performance at resolution of 1024 × 768, but can not provide the best at resolutions of less than 1024 × 768 because the picture is automatically stretched to fit the full screen. It is recommended to operate at resolution of 1024 × 768 in normal use.
- ProLite T1732MSC and ProLite T1932MSC are designed to provide the best performance at resolution of 1280 × 1024, but can not provide the best at resolutions of less than 1280 × 1024 because the picture is automatically stretched to fit the full screen. It is recommended to operate at resolution of 1280 × 1024 in normal use.
- Displayed text or lines will be blurred or irregular in thickness when the picture is stretched due to the screen enlargement process.
- It is preferable to adjust the image position and frequency with the monitor controls, rather than the computer software or utilities.
- Perform adjustments after a warm-up period of at least thirty minutes.
- Additional adjustments may be required after the Auto Adjust depending on the resolution or signal timing.
- The Auto Adjust may not work correctly when displaying the picture other than the screen adjustment pattern. In this case, manual adjustments are required.

There are two ways to adjust the screen. One way is automatic adjustment for H/V-POSITION, H-SIZE and FINE. The other way is performing each adjustment manually.

Perform the Auto Adjust first when the monitor is connected to a new computer, or resolution is changed. If the screen has a flicker or blur, or the picture does not fit in the display area after performing the Auto Adjust, manual adjustments are required. Both adjustments should be made by using the screen adjustment pattern (Test.bmp) obtained via the iiyama web site (<https://iiyama.com>).

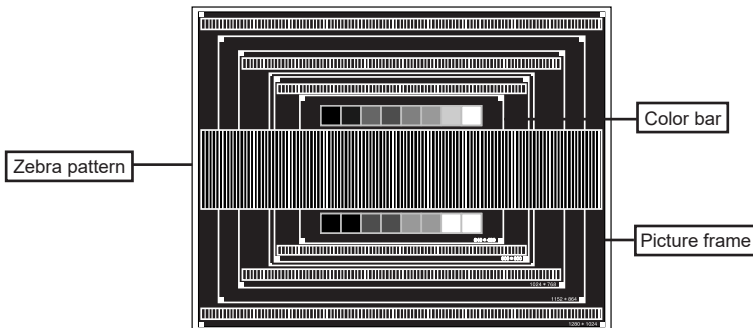
Adjust the image by following the procedure below to get the desired picture.
This manual explains adjustment under Windows® OS.

- ① **Display the picture at the optimum resolution.**
- ② **Enter the Test.bmp (screen adjustment pattern) to wallpaper.**

NOTE

- Consult the appropriate documentation for doing this.
- Set the display position to center in the wallpaper setting dialogue box.

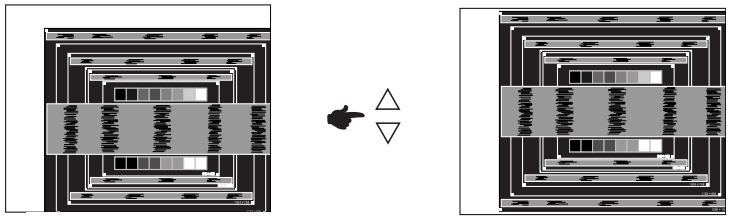
[Adjustment pattern]



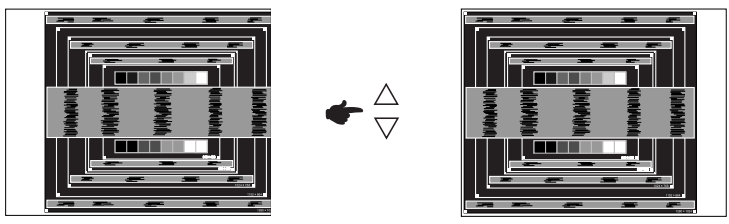
③ Press the  Button. (AUTO ADJUST)

④ Adjust the image manually by following procedure below when the screen has a flicker or blur, or the picture does not fit in the display area after performing the Auto Adjust.

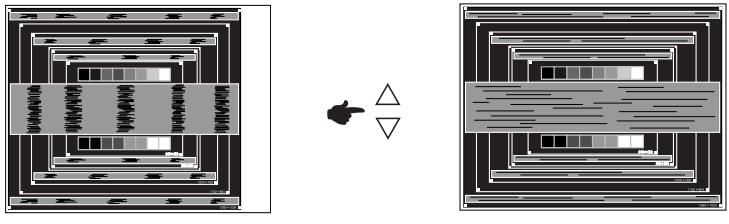
⑤ Adjust the V-POSITION so that the top and bottom of the picture frame will fit to the display area.



⑥ 1) Adjust the H-POSITION so that the left side of the picture frame will move to the left edge of the display area.



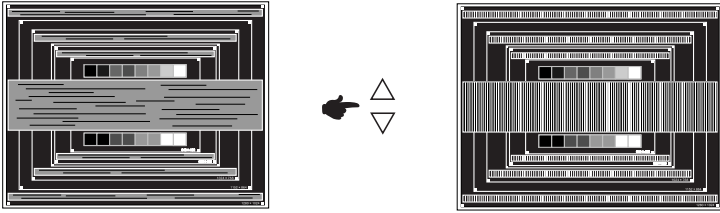
2) Stretch the right side of the picture frame to the right edge of the display area by adjusting the H-SIZE.



NOTE

- When the left side of the picture frame moves apart from the left edge of the display area during the H-SIZE adjustment, adjust steps 1) and 2).
- Another way to make the H-SIZE adjustment is to correct the vertical wavy lines in the zebra pattern.
- The picture may flicker during the H-SIZE, H/V-POSITION adjustment.
- In case the picture frame is bigger or smaller than the data display area after the H-SIZE adjustment, repeat steps from ③.

- ⑦ Adjust the FINE to correct horizontal wavy noise, flicker or blur in the zebra pattern.



NOTE

- In case the strong flicker or blurs remain on a part of the screen, repeat steps ⑥ and ⑦ because the H-SIZE may not be adjusted correctly.
 - Adjust the H-POSITION after the FINE adjustment if the horizontal position moves during the adjustment.
- ⑧ Adjust the Brightness and Color to get the desired picture after you complete the H-SIZE and FINE adjustments.
Put back your favorite wallpaper.

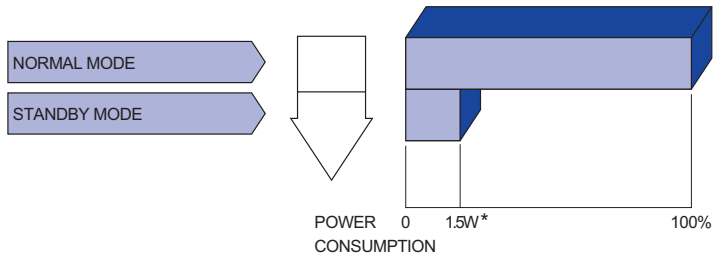
STANDBY FEATURE

This product features the standby function. When activated, it automatically reduces unnecessary power consumption of the monitor when your computer is not in use.

There is a standby step the monitor takes as described below. The standby function, including any timer settings is configured by the operating system. Check your operating system manual for information on how this can be configured.

■ Standby Mode

When the video signal from the computer is off, the monitor enters into Standby Mode which reduces the power consumption to less than 1.5W*. The screen becomes dark. From Standby Mode, the image reappears in several seconds when either the keyboard or the mouse are touched again.



* When the USB devices are not connected.

TROUBLE SHOOTING

If the monitor fails to operate correctly, please follow the steps below for a possible solution.

1. Perform the adjustments described in OPERATING THE MONITOR, depending on the problem you have. If the monitor does not get a picture, skip to 2.
2. Consult the following items if you cannot find an appropriate adjustment item in OPERATING THE MONITOR or if the problem persists.
3. If you are experiencing a problem which is not described below or you cannot correct the problem, discontinue using the monitor and contact your dealer or iiyama service center for further assistance.

Problem

Check

- | | |
|---|---|
| ① The picture does not appear. | <input type="checkbox"/> The Power Cable is firmly seated in the socket. <input type="checkbox"/> The Power Switch is turned ON. <input type="checkbox"/> The AC socket is live. Please check with another piece of equipment. <input type="checkbox"/> If the blank screen saver is in active mode, touch the keyboard or the mouse. <input type="checkbox"/> Increase the Contrast and/or Brightness. <input type="checkbox"/> The computer is ON. <input type="checkbox"/> The Signal Cable is properly connected. <input type="checkbox"/> The signal timing of the computer is within the specification of the monitor. <input type="checkbox"/> If the monitor is in standby mode, touch the keyboard or the mouse. |
| ② The screen is not synchronized. | <input type="checkbox"/> The Signal Cable is properly connected. <input type="checkbox"/> The signal timing of the computer is within the specification of the monitor. |
| ③ The screen position is not in the center. | <input type="checkbox"/> The signal timing of the computer is within the specification of the monitor. |
| ④ The screen is too bright or too dark. | <input type="checkbox"/> The video output level of the computer is within the specification of the monitor. |
| ⑤ The screen is shaking. | <input type="checkbox"/> The power voltage is within the specification of the monitor. <input type="checkbox"/> The signal timing of the computer is within the specification of the monitor. |
| ⑥ No sound. | <input type="checkbox"/> The audio equipment (computer etc.) is ON. <input type="checkbox"/> The Audio Cable is properly connected. <input type="checkbox"/> The Volume is turned up. <input type="checkbox"/> The Mute is OFF. <input type="checkbox"/> The audio output level of the audio equipment is within the specification of the monitor. |
| ⑦ The sound is too loud or too quiet. | <input type="checkbox"/> The audio output level of the audio equipment is within the specification of the monitor. |
| ⑧ A strange noise is heard. | <input type="checkbox"/> The Audio Cable is properly connected. |
| ⑨ The touch screen shows no response. | <input type="checkbox"/> The USB Cable is firmly seated in the socket. <input type="checkbox"/> Touch screen driver software is installed. |
| ⑩ The touch position does not deviate. | <input type="checkbox"/> The calibration function set up correctly. |

RECYCLING INFORMATION

For better environment protection please don't dispose your monitor.
Please visit our web site: <https://iiyama.com> for monitor recycling.

APPENDIX

Design and specifications are subject to change without prior notice.

SPECIFICATIONS : ProLite T1532MSC

| | | ProLite T1532MSC-B1S | ProLite T1532MSC-B1SAG |
|---------------------------------|-----------------------------------|--|---|
| Touch Screen | Technology | Projected capacitive 10pt touch | |
| | Light transmission | 90% | 85% |
| | Communication system | USB | |
| Size Category | | 15" | |
| LCD Panel | Panel technology | TN | |
| | Size | Diagonal: 15" (38cm) | |
| | Pixel pitch | 0.297mm H × 0.297mm V | |
| | Brightness | 350cd/m ² (Typical: without Touch panel), 295cd/m ² (Default / Energy Saving, with Touch panel) | |
| | | 315cd/m ² (Typical: with Touch panel) | 300cd/m ² (Typical: with Touch panel + AG coating) |
| | Contrast ratio | 800 : 1 (Typical) | |
| | Viewable angle | Horizontal : 176 degrees, Vertical: 176 degrees (Typical) | |
| Response time | 8ms (Black, White, Black Typical) | | |
| Display Colors | | Approx. 16.2M | |
| Sync Frequency | | Horizontal: 31.47-60.02kHz, Vertical: 56-70Hz | |
| Maximum Resolution | | 1024 × 768, 0.8 MegaPixels | |
| Input Connector | | VGA, HDMI, DisplayPort | |
| Input Sync Signal | | Separate sync: TTL, Positive or Negative | |
| Input Video Signal | | Analog: 0.7Vp-p (Standard), 75Ω, Positive Digital: HDMI, DisplayPort | |
| Input Audio Connector | | ø 3.5mm mini jack (Stereo) | |
| Input Audio Signal | | 1.0Vrms maximum | |
| Speakers | | 1W × 2 (Stereo speakers) | |
| Maximum Screen Size | | 304.1mm W × 228.1mm H / 12.0" W × 9.0" H | |
| Power Source | | 100-240VAC, 50-60Hz, 1A | |
| Power Consumption* ¹ | | 16W typical Standby mode: 1.5W maximum, Off mode: 0.3W maximum | |
| Dimensions / Net Weight | | 351.0 × 306.5 × 200.0mm / 13.8 × 12.1 × 7.9" (W×H×D) 3.7kg / 8.2lbs | |
| Tilt Angle | | Upward: 90 degrees Downward: 5 degrees | |
| Environmental Considerations | | Operating: Temperature 0 to 40°C / 32 to 104°F Humidity 20 to 80% (No condensation) Storage: Temperature -20 to 60°C / -4 to 140°F Humidity 10 to 90% (No condensation) | |
| Approvals | | CE, UKCA, EAC, cULus, VCCI, IP54* ² | |

NOTE *¹ When the USB devices are not connected.

*² IP54 Standard Compliant : Only front face

SPECIFICATIONS : ProLite T1732MSC

| | | | |
|---------------------------------|-----------------------------------|--|---|
| | | ProLite T1732MSC-B1S | ProLite T1732MSC-B1SAG / ProLite T1732MSC-W1SAG |
| Touch Screen | Technology | Projected capacitive 10pt touch | |
| | Light transmission | 90% | 85% |
| | Communication system | USB | |
| Size Category | | 17" | |
| LCD Panel | Panel technology | TN | |
| | Size | Diagonal: 17" (43cm) | |
| | Pixel pitch | 0.264mm H × 0.264mm V | |
| | Brightness | 250cd/m ² (Typical: without Touch panel), 230cd/m ² (Default / Energy Saving, with Touch panel) | |
| | | 225cd/m ² (Typical: with Touch panel) | 215cd/m ² (Typical: with Touch panel + AG coating) |
| | Contrast ratio | 1000 : 1 (Typical) | |
| | Viewable angle | Horizontal : 170 degrees, Vertical: 160 degrees (Typical) | |
| Response time | 5ms (Black, White, Black Typical) | | |
| Display Colors | | Approx.16.7M | |
| Sync Frequency | | Horizontal: 31.0-80.0kHz, Vertical: 50-75Hz | |
| Maximum Resolution | | 1280 × 1024, 1.3 MegaPixels | |
| Input Connector | | VGA, HDMI, DisplayPort | |
| Input Sync Signal | | Separate sync: TTL, Positive or Negative | |
| Input Video Signal | | Analog: 0.7Vp-p (Standard), 75Ω, Positive Digital: HDMI, DisplayPort | |
| Input Audio Connector | | ø 3.5mm mini jack (Stereo) | |
| Input Audio Signal | | 1.0Vrms maximum | |
| Speakers | | 1W × 2 (Stereo speakers) | |
| Maximum Screen Size | | 337.920mm W × 270.336mm H / 13.3" W × 10.6" H | |
| Power Source | | 100-240VAC, 50-60Hz, 1A | |
| Power Consumption* ¹ | | 20W typical Standby mode: 1.5W maximum, Off mode: 0.3W maximum | |
| Dimensions / Net Weight | | 387.0 × 378.0 × 239.5mm / 15.2 × 14.9 × 9.4" (W×H×D) 4.9kg / 10.8lbs | |
| Tilt Angle | | Upward: 90 degrees Downward: 5 degrees | |
| Environmental Considerations | | Operating: Temperature 0 to 40°C / 32 to 104°F Humidity 20 to 80% (No condensation) Storage: Temperature -20 to 60°C / -4 to 140°F Humidity 10 to 90% (No condensation) | |
| Approvals | | CE, UKCA, EAC, cULus, VCCI, IP54* ² | |

NOTE *¹ When the USB devices are not connected.

*² IP54 Standard Compliant : Only front face

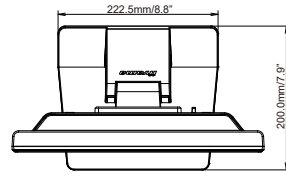
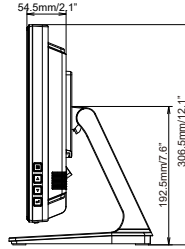
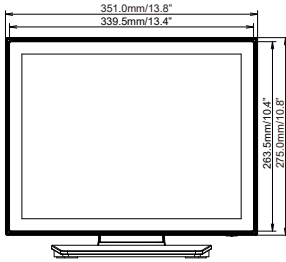
SPECIFICATIONS : ProLite T1932MSC

| | | | |
|---------------------------------|-----------------------------|--|---|
| | | ProLite T1932MSC-B1S | ProLite T1932MSC-B1SAG / ProLite T1932MSC-W1SAG |
| Touch Screen | Technology | Projected capacitive 10pt touch | |
| | Light transmission | 90% | 85% |
| | Communication system | USB | |
| Size Category | | 19" | |
| LCD Panel | Panel technology | IPS | IPS (In-Plane-Switching) |
| | Size | Diagonal: 19" (48cm) | |
| | Pixel pitch | 0.2928mm H × 0.2928mm V | |
| | Brightness | 250cd/m ² (Typical: without Touch panel), 190cd/m ² (Default / Energy Saving, with Touch panel) | |
| | | 225cd/m ² (Typical: with Touch panel) | 215cd/m ² (Typical: with Touch panel + AG coating) |
| | Contrast ratio | 1000 : 1 (Typical) | |
| | Viewable angle | Horizontal : 178 degrees, Vertical: 178 degrees (Typical) | |
| Response time | 14ms (Gray to Gray Typical) | | |
| Display Colors | | Approx. 16.7M | |
| Sync Frequency | | Horizontal: 31.0-80.0kHz, Vertical: 50-75Hz | |
| Maximum Resolution | | 1280 × 1024, 1.3 MegaPixels | |
| Input Connector | | VGA, HDMI, DisplayPort | |
| Input Sync Signal | | Separate sync: TTL, Positive or Negative | |
| Input Video Signal | | Analog: 0.7Vp-p (Standard), 75Ω, Positive Digital: HDMI, DisplayPort | |
| Input Audio Connector | | ø 3.5mm mini jack (Stereo) | |
| Input Audio Signal | | 1.0Vrms maximum | |
| Speakers | | 1W × 2 (Stereo speakers) | |
| Maximum Screen Size | | 374.78mm W × 299.83mm H / 14.7" W × 11.8" H | |
| Power Source | | 100-240VAC, 50-60Hz, 1A | |
| Power Consumption* ¹ | | 20W typical Standby mode: 1.5W maximum, Off mode: 0.3W maximum | |
| Dimensions / Net Weight | | 432.0 × 413.5 × 239.5mm / 17.0 × 16.3 × 9.4" (W×H×D) 5.4kg / 11.8lbs | |
| Tilt Angle | | Upward: 90 degrees Downward: 5 degrees | |
| Environmental Considerations | | Operating: Temperature 0 to 40°C / 32 to 104°F Humidity 20 to 80% (No condensation) Storage: Temperature -20 to 60°C / -4 to 140°F Humidity 10 to 90% (No condensation) | |
| Approvals | | CE, UKCA, EAC, cULus, IP54* ² | |

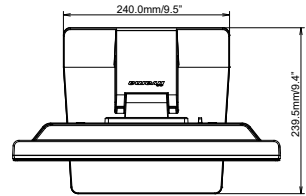
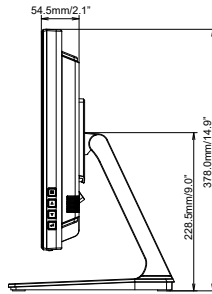
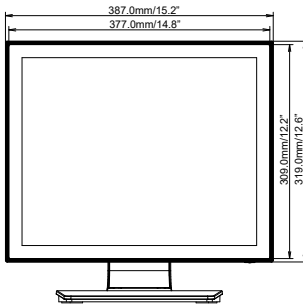
NOTE *¹ When the USB devices are not connected.

*² IP54 Standard Compliant : Only front face

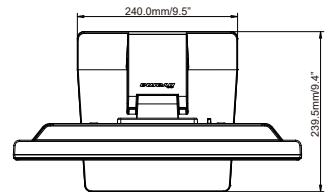
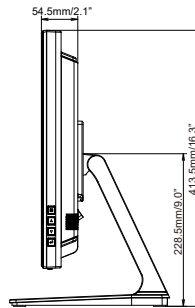
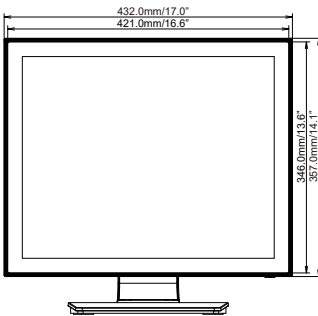
DIMENSIONS : ProLite T1532MSC



DIMENSIONS : ProLite T1732MSC



DIMENSIONS : ProLite T1932MSC



COMPLIANT TIMING

| Video Mode | Horizontal Frequency | Vertical Frequency | Dot Clock |
|-------------|----------------------|--------------------|------------|
| 640 × 480 | 31.469kHz | 59.940Hz | 25.175MHz |
| | 37.500kHz | 75.000Hz | 31.500MHz |
| | 37.861kHz | 72.809Hz | 31.500MHz |
| 800 × 600 | 35.156kHz | 56.250Hz | 36.000MHz |
| | 37.879kHz | 60.317Hz | 40.000MHz |
| | 46.875kHz | 75.000Hz | 49.500MHz |
| | 48.077kHz | 72.188Hz | 50.000MHz |
| 1024 × 768 | 48.363kHz | 60.004Hz | 65.000MHz |
| | 56.476kHz | 70.069Hz | 75.000MHz |
| | 60.023kHz | 75.029Hz | 78.750MHz |
| 1280 × 1024 | 63.981kHz | 60.020Hz | 108.000MHz |
| | 79.976kHz | 75.025Hz | 135.000MHz |

NOTE

* Not compliant to ProLite T1532MSC.