

CT30 XP & CT30 XP HC MOBILE COMPUTERS ACCESSORIES GUIDE

Accessories Guide

Honeywell

TABLE OF CONTENTS

3	CHARGERS
3	Chargers for non-booted terminals
6	Chargers for booted terminals
9	Chargers for batteries
10	Healthcare chargers
10	POWER SUPPLIES
11	SCAN HANDLES
12	OTHER ACCESSORIES
13	SD CARDS
13	AC LINE CORDS

CHARGERS

Chargers for non-booted terminals



CT30P-CB-UVN-0

CT30 XP non-booted charging base, standard

Kit includes 4 bay charging base, power supply, must order power cord separately. For recharging up to 4 computers.



CT30P-CB-UVN-1

CT30 XP non-booted charging base, for US

Kit includes 4 bay charging base, power supply, US power cord. For recharging up to 4 computers.



CT30P-CB-UVN-2

CT30 XP non-booted charging base, for EU

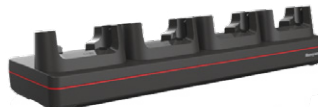
Kit includes 4 bay charging base, power supply, EU power cord. For recharging up to 4 computers.



CT30P-CB-UVN-3

CT30 XP non-booted charging base, for UK

Kit includes 4 bay charging base, power supply, UK power cord. For recharging up to 4 computers.



CT30P-NB-UVN-0

CT30 XP non-booted net base, standard

Kit includes net base and power supply, must order power cord separately. For Ethernet comms and recharging up to 4 computers.



CT30P-NB-UVN-1

CT30 XP non-booted net base, for US

Kit includes net base and power supply, US power cord. For Ethernet comms and recharging up to 4 computers.



CT30P-NB-UVN-2

CT30 XP non-booted net base, for EU

Kit includes net base and power supply, EU power cord. For Ethernet comms and recharging up to 4 computers.



CT30P-NB-UVN-3

CT30 XP non-booted net base, for UK

Kit includes net base and power supply, UK power cord. For Ethernet comms and recharging up to 4 computers.



CT30P-HB-UVN-0

CT30 XP non-booted home base, standard

Kit includes home base, power supply, must order power cord separately. For recharging one computer and a spare battery. Support USB client via USB Type B connector.

CHARGERS, Continued

Chargers for non-booted terminals



CT30P-HB-UVN-1

CT30 XP non-booted home base, for US

Kit includes home base, power supply, US power cord. For recharging one computer and a spare battery. Support USB client via USB Type B connector.



CT30P-HB-UVN-2

CT30 XP non-booted home base, for EU

Kit includes home base, power supply, EU power cord. For recharging one computer and a spare battery. Support USB client via USB Type B connector.



CT30P-HB-UVN-3

CT30 XP non-booted home base, for UK

Kit includes home base, power supply, UK power cord. For recharging one computer and a spare battery. Support USB client via USB Type B connector.



CT30P-EB-UVN-0

CT30 XP non-booted ethernet base, standard

Kit includes ethernet home base, power supply, must order power cord separately. For recharging one computer and one spare battery. Includes Ethernet communications. Supports USB client via USB Type B connector.



CT30P-EB-UVN-1

CT30 XP non-booted ethernet base, for US

Kit includes ethernet home base, power supply, US power cord. For recharging one computer and one spare battery. Includes Ethernet communications. Supports USB client via USB Type B connector.



CT30P-EB-UVN-2

CT30 XP non-booted ethernet base, for EU

Kit includes ethernet home base, power supply, EU power cord. For recharging one computer and one spare battery. Includes Ethernet communications. Supports USB client via USB Type B connector.



CT30P-EB-UVN-3

CT30 XP non-booted ethernet base, for UK

Kit includes ethernet home base, power supply, UK power cord. For recharging one computer and one spare battery. Includes Ethernet communications. Supports USB client via USB Type B connector.



CT30P-DB-UVN-0

CT30 XP non-booted display base, standard

Kit includes display base, power supply, must order power cord separately. For Charging one computer, connection with an external display, and extending I/O for HDMI, Ethernet comm and 3 USB ports.



CT30P-DB-UVN-1

CT30 XP non-booted display base, for US

Kit includes display base, power supply, US power cord. For Charging one computer, connection with an external display, and extending I/O for HDMI, Ethernet comm and 3 USB ports.

CHARGERS, Continued

Chargers for non-booted terminals



CT30P-DB-UVN-2

CT30 XP non-booted display base, for EU

Kit includes display base, power supply, EU power cord. For Charging one computer, connection with an external display, and extending I/O for HDMI, Ethernet comm and 3 USB ports.



CT30P-DB-UVN-3

CT30 XP non-booted display base, for UK

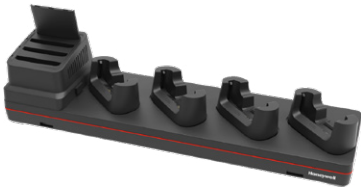
Kit includes display base, power supply, UK power cord. For Charging one computer, connection with an external display, and extending I/O for HDMI, Ethernet comm and 3 USB ports.



CT30-5CB-UVN-BAT-0

CT30 XP 5-bay charging base, standard

Kit includes 5-bay charging base, power supply, no power cord. Charge up to 4 pcs computers and 4 pcs of CT30 XP batteries.



CT30-5CB-UVN-BAT-1

CT30 XP 5-bay charging base, US power cord

Kit includes 5-bay charging base, power supply, US power cord. Charge up to 4 pcs computers and 4 pcs of CT30 XP batteries.



CT30P-UCP-N

CT30 XP non-booted universal cup

Kit includes a cup to be used for CT30 XP. Charging docks, power supply and cables must be ordered separately.



CT30P-5CB-UVN-0

CT30 XP non-booted charging base, standard

Kit includes 5 bay charging base, power supply, must order power cord separately. For recharging up to 5 computers.



CT30P-5CB-UVN-1

CT30 XP non-booted charging base, for US

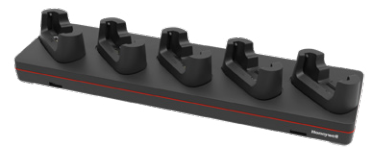
Kit includes 5 bay charging base, power supply, US power cord. For recharging up to 5 computers.



CT30P-5CB-UVN-2

CT30 XP non-booted charging base, for EU

Kit includes 5 bay charging base, power supply, EU power cord. For recharging up to 5 computers.



CT30P-5CB-UVN-3

CT30 XP non-booted charging base, for UK

Kit includes 5 bay charging base, power supply, UK power cord. For recharging up to 5 computers.

CHARGERS, Continued

Chargers for booted terminals



CT30P-CB-UVB-0

CT30 XP booted charging base, standard

Kit includes 4 bay charger, power supply, must order power cord separately. For recharging up to 4 computers with protective boot (CT30P-PB-XP) attached.



CT30P-CB-UVB-1

CT30 XP booted charging base, for US

Kit includes 4 bay charger, power supply, US power cord. For recharging up to 4 computers with protective boot (CT30P-PB-XP) attached.



CT30P-CB-UVB-2

CT30 XP booted charging base, for EU

Kit includes 4 bay charger, power supply, EU power cord. For recharging up to 4 computers with protective boot (CT30P-PB-XP) attached.



CT30P-CB-UVB-3

CT30 XP booted charging base, for UK

Kit includes 4 bay charger, power supply, UK power cord. For recharging up to 4 computers with protective boot (CT30P-PB-XP) attached.



CT30P-NB-UVB-0

CT30 XP booted net base, standard

Kit includes net base, power supply, must order power cord separately. For Ethernet communications and recharging up to 4 computers with protective boot (CT30P-PB-XP) attached.



CT30P-NB-UVB-1

CT30 XP booted net base, for US

Kit includes net base, power supply, US power cord. For Ethernet communications and recharging up to 4 computers with protective boot (CT30P-PB-XP) attached.



CT30P-NB-UVB-2

CT30 XP booted net base, for EU

Kit includes net base, power supply, EU power cord. For Ethernet communications and recharging up to 4 computers with protective boot (CT30P-PB-XP) attached.



CT30P-NB-UVB-3

CT30 XP booted net base, for UK

Kit includes net base, power supply, UK power cord. For Ethernet communications and recharging up to 4 computers with protective boot (CT30P-PB-XP) attached.



CT30P-HB-UVB-0

CT30 XP booted home base, standard

Kit includes home base, power supply, must order power cord separately. For recharging computer with protective boot (CT30P-PB-XP) attach and a spare battery. Support USB client via USB Type B connector.



CT30P-HB-UVB-1

CT30 XP booted home base, for US

Kit includes home base, power supply, US power cord. For recharging computer with protective boot (CT30P-PB-XP) attached and a spare battery. Support USB client via USB Type B connector.



CT30P-HB-UVB-2

CT30 XP booted home base, for EU

Kit includes home base, power supply, EU power cord. For recharging computer with protective boot (CT30P-PB-XP) attached and a spare battery. Support USB client via USB Type B connector.



CT30P-HB-UVB-3

CT30 XP booted home base, for UK

Kit includes home base, power supply, UK power cord. For recharging computer with protective boot (CT30P-PB-XP) attached and a spare battery. Support USB client via USB Type B connector.

CHARGERS, Continued

Chargers for booted terminals



CT30P-EB-UVB-0

CT30 XP booted ethernet base, standard

Kit includes ethernet home base, power supply, must order power cord separately. For recharging computer with protective boot (CT30P-PB-XP).



CT30P-EB-UVB-1

CT30 XP booted ethernet base, for US

Kit includes ethernet home base, US power cord. For recharging computer with protective boot (CT30P-PB-XP).



CT30P-EB-UVB-2

CT30 XP booted ethernet base, for EU

Kit includes ethernet home base, EU power cord. For recharging computer with protective boot (CT30P-PB-XP).



CT30P-EB-UVB-3

CT30 XP booted ethernet base, for UK

Kit includes ethernet home base, UK power cord. For recharging computer with protective boot (CT30P-PB-XP).



CT30P-DB-UVB-0

CT30 XP booted display base, standard

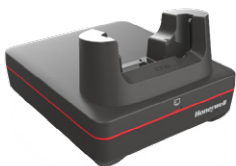
Kit includes display base, power supply, must order power cord separately. For Charging CT30 XP with protective boot (CT30P-PB-XP) attached, connection with an external display, extending I/O for HDMI, Ethernet comm and 3 USB ports.



CT30P-DB-UVB-1

CT30 XP booted display base, for US

Kit includes display base, power supply, US power cord. For Charging CT30 XP with protective boot (CT30P-PB-XP) attached, connection with an external display, extending I/O for HDMI, Ethernet communications and 3 USB ports.



CT30P-DB-UVB-2

CT30 XP booted display base, for EU

Kit includes display base, power supply, EU power cord. For Charging CT30 XP with protective boot (CT30P-PB-XP) attached, connection with an external display, extending I/O for HDMI, Ethernet communications and 3 USB ports.



CT30P-DB-UVB-3

CT30 XP booted display base, for UK

Kit includes display base, power supply, UK power cord. For Charging CT30 XP with protective boot (CT30P-PB-XP) attached, connection with an external display, extending I/O for HDMI, Ethernet communications and 3 USB ports.



CT30-5CB-UVB-BAT-0

CT30 XP booted 5-bay charging base, standard

Kit includes 5-bay charging base, power supply, no power cord. Charge up to 4 pcs computers with protective boot (CT30P-PB-XP) and 4 pcs of CT30 XP batteries or up to 5 pcs of computers with protective boot (CT30P-PB-XP).

CHARGERS, Continued

Chargers for booted terminals



CT30-5CB-UVB-BAT-1

CT30 XP booted 5-bay charging base, US

Kit includes 5-bay charging base, power supply, US power cord. Charge up to 4 pcs computers with protective boot (CT30P-PB-XP) and 4 pcs of CT30 XP batteries or up to 5 pcs of computers with protective boot (CT30P-PB-XP).



CT30P-UCP-B

CT30 XP universal cup

Kit includes a cup to be used for CT30 XP with protective boot. Charging docks, power supply and cables must be ordered separately.



CT30P-5CB-UVB-0

CT30 XP booted charging base, standard

Kit includes 5 bay charging base, power supply, must order power cord separately. For recharging up to 5 computers.



CT30P-5CB-UVB-1

CT30 XP booted charging base, for US

Kit includes 5 bay charging base, power supply, US power cord. For recharging up to 5 computers.



CT30P-5CB-UVB-2

CT30 XP booted charging base, for EU

Kit includes 5 bay charging base, power supply, EU power cord. For recharging up to 5 computers.



CT30P-5CB-UVB-3

CT30 XP booted charging base, for UK

Kit includes 5 bay charging base, power supply, UK power cord. For recharging up to 5 computers.

CHARGERS, Continued

Chargers for batteries



CT30P-QBC-0

CT30 XP quad battery charger, Standard

Kit includes quad battery charger, power supply, power cord must be ordered separately. For recharging up to four CT30 XP batteries.



CT30P-QBC-1

CT30 XP quad battery charger, for US

Kit includes quad battery charger, power supply, US power cord. For recharging up to four CT30 XP batteries.



CT30P-QBC-2

CT30 XP quad battery charger, for EU

Kit includes quad battery charger, power supply, EU power cord. For recharging up to four CT30 XP batteries.



CT30P-QBC-3

CT30 XP quad battery charger, for UK

Kit includes quad battery charger, power supply, UK power cord. For recharging up to four CT30 XP batteries.

CHARGERS, Continued

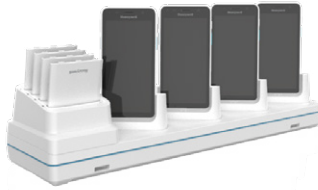
Healthcare chargers



CT30-5CB-UVN-HC0

CT30 XP HC non-booted 5-bay charging base

Kit includes 5-bay charging base and power supply. Must order power cord separately. Charge up to 4 pcs computers and 4 pcs of CT30 XP batteries.



CT30-5CB-UVB-HC0

CT30 XP HC booted 5-bay charging base

Kit includes 5-bay charging base and power supply. Must order power cord separately. Charge up to 4 pcs computers with protective boot and 4 pcs of CT30 XP batteries.



CT30P-DB-UVN-HC0

CT30 XP HC non-booted display base

Kit includes display base, power supply, must order power cord separately. For Charging one computer, connection with an external display, and extending I/O for HDMI, Ethernet comm and 3 USB ports.



CT30P-DB-UVB-HC0

CT30 XP HC booted display base

Kit includes display base, power supply, must order power cord separately. For Charging CT30 XP with protective boot (CT30P-PB-XP) attached, connection with an external display, extending I/O for HDMI, Ethernet comm and 3 USB ports.



CT30P-QBC-HC0

CT30 XP HC quad battery charger

Kit includes healthcare quad battery charger and power supply. Must order power cord separately. For recharging up to four CT30 XP batteries.



CT30P-UCP-NHC

CT30 XP HC non-booted universal cup

Kit includes a cup to be used for CT30 XP. Charging docks, power supply and cables must be ordered separately.



CT30P-UCP-BHC

CT30 XP HC booted universal cup

Kit includes a cup to be used for CT30 XP with protective boot. Charging docks, power supply and cables must be ordered separately.

POWER SUPPLIES



CT30P-BTSC-001

Spare Battery Pack, DRH

CT30 XP disinfectant ready battery pack, 3400mAh, for use with CT30 XP disinfectant-ready configurations (last two digits in part number begin with D or N: CT30P-xxx-xxxxDx or CT30P-xxx-xxxxNx)



CT30P-BTSC-002

Spare Battery Pack, HC

CT30 XP healthcare battery pack, 3400mAh, for use with CT30 XP healthcare configurations (last two digits in part number begin with H: CT30P-xxx-xxxxHx)



50121666-001

Desktop Power Supply

A 36 W power supply for use with Ethernet home base, charge-only home base, and quad battery charger. Requires country-specific line cord to be ordered separately.



50121667-001

Quad Base Power Supply

An 84 W power supply for use with four-bay charging base and four-bay net base. Requires country-specific line cord to be ordered separately.



50136024-001

Power Plug Adapter Kit

KIT, 5V/2A Power supply, Scanpal EDA 50k / 51 / 60 / 61K / 70 / 71. Mobility Edge CT40 / CT60. Includes 5 PLUGS PACKED US, UK, AU, EU, IN adapters.

SCAN HANDLES



CT30P-SH-00

CT30 XP Scan Handle

CT30 XP scan handle, compatible with CT30 XP without protective boot; compatible with non-booted chargers.



CT30P-SH-UVB

CT30 XP Scan Handle

CT30 XP scan handle compatible with CT30 XP with protective boot; compatible with booted chargers.

OTHER ACCESSORIES



CT30P-HS-3PK

CT30 XP Hand Strap

CT30 XP hand strap, 3pcs

CT30P-PB-XP

CT30XP Protective Boot

CT30 XP protective boot. It is compatible with booted universal docks (CT30P-XX-UVB-X).

CT30P-WS-KIT

CT30P Wearable Kit

CT30 XP wearable kit. Not compatible with protective boot.



CT30P-CLIP-HC

CT30 XP Healthcare Carrying Clip

CT30 XP healthcare carrying clip. Snaps on top of CT30 XP healthcare terminal of WLAN configuration (CT30P-XON-30D10HG). Built with disinfectant-ready, healthcare grade plastic. 1 piece is included in the kit.

CT30P-CLIP-STD

CT30 XP Carrying Clip

CT30 XP carrying clip. Snaps on top of CT30 XP terminal of WLAN configuration (CT30P-LON-XXXXXXX and CT30P-XON-XXXXXXX). 1 piece is included in the kit.

CT30P-IH40-BR

IH40 bracket for CT30 XP

IH40 bracket for non-booted CT30 XP. Not compatible with protective boot.



MBL-HDST-USBC

Mobility USBC Headset

Mobility headset with PTT, USB-C interface

CT30P-SP-1PK

CT30 XP Screen Protector

CT30 XP screen protector, 1 piece per pack. Can be used with stylus.

SD CARDS

856-065-004

Industrial-Grade Micro-SD Card*
Micro-SD card, 1 GB, AFIGUDI, RoHS

856-065-005

Industrial-Grade Micro-SD Card*
Micro-SD card, 2 GB, AFIGUDI, RoHS

856-065-006

Industrial-Grade Micro-SD Card*
Micro-SD card, 4 GB, AFIGUDI, RoHS

856-065-007

Industrial-Grade Micro-SD Card*
Micro-SD card, 8 GB, AFIGUDI, RoHS

* Micro-SD cards are required when databases are stored on the device. The database should be stored on the SD card.

AC LINE CORDS

50127245-001

Power Cord – India
Power cord, India, 1.5 m (4.9 ft)

50117501-001

Power Cord – Australia
Power cord, Australia, 2.5 m (8.2 ft)

50117503-001

Power Cord – CB
Power cord, Argentina, Isled CB

77900506E

Power Cord – U.S
Power cord, U.S., IEC320-C13, 1.85 m (6.07 ft)

77900507E

Power Cord – UK
Power cord, UK, IEC320-C13, 2.5 m (8.2 ft)

77900508E

Power Cord – EU
Power cord, Europe, IEC320-C13, 2.5 m (8.2 ft)

19-19807

Power Cord – China
Cable, China cord set (CCC), 2.5 m (8.2 ft)

130063

Power Cord – U.S.
Cable, power cord/IEC, U.S., 2.5 m (8.2 ft)

For more information

sps.honeywell.com

**Honeywell Safety and
Productivity Solutions**

855 S Mint Street,
Charlotte, NC 28202
800-582-4263
www.honeywell.com