

msi



Cubi N

Be Your Window To The World

Feature Overview



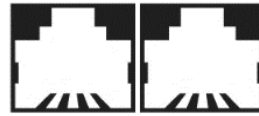
Small Size

4K UHD
3840 x 2160

4K UHD Support



Matrix Display



Dual LAN



MSI Cloud Center



TPM Support

dTPM 2.0 Module



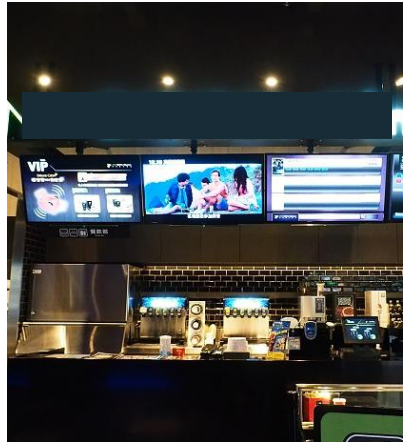
MSI Center



VESA Mountable



Ready For Various Scenarios



We always focus on how to improve the efficiency, stability and flexibility for users in any kinds of situations.

Wavy Meshed Design

Compact and versatile, this 0.66-liter mini PC is ideal for small workspaces, home entertainment sets, and a variety of industries.



THE CHANGED EDGE

Underestimate the power of the dark side



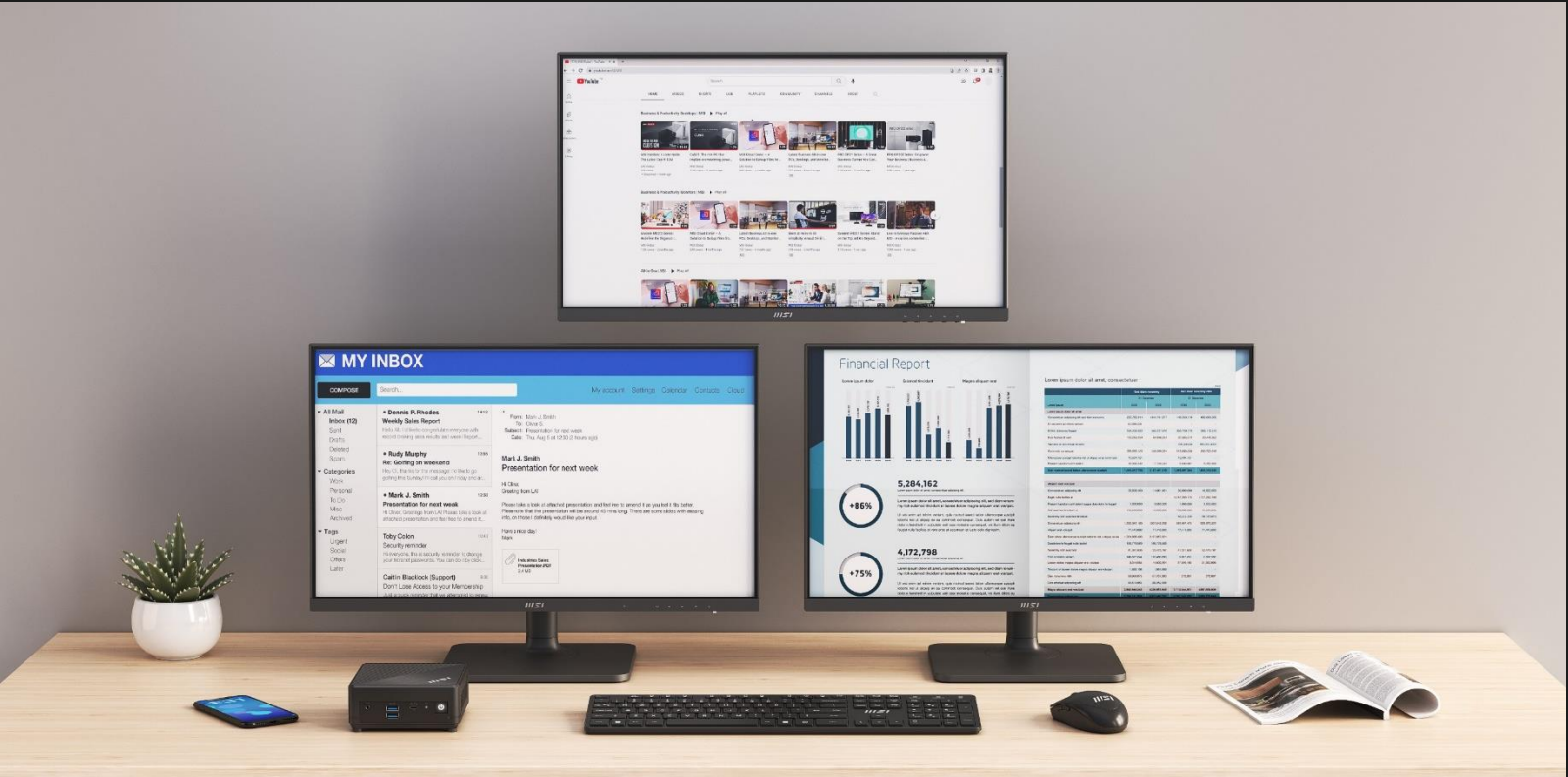
Support Up To 4K Resolution

msi

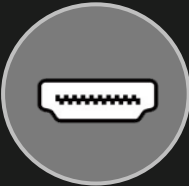
Cubi N ADL allows you to enjoy the best experience of watching movie with your family or attending online conference call while working from home or learning professional tasks at home.



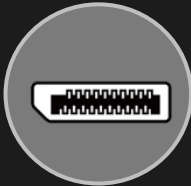
See More, Do More



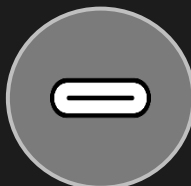
With HDMI, DP, and Type-C port, Cubi N allows you to extend to three monitors to preview your E-commerce content & data at home or in the office, enhancing your efficiency.



HDMI

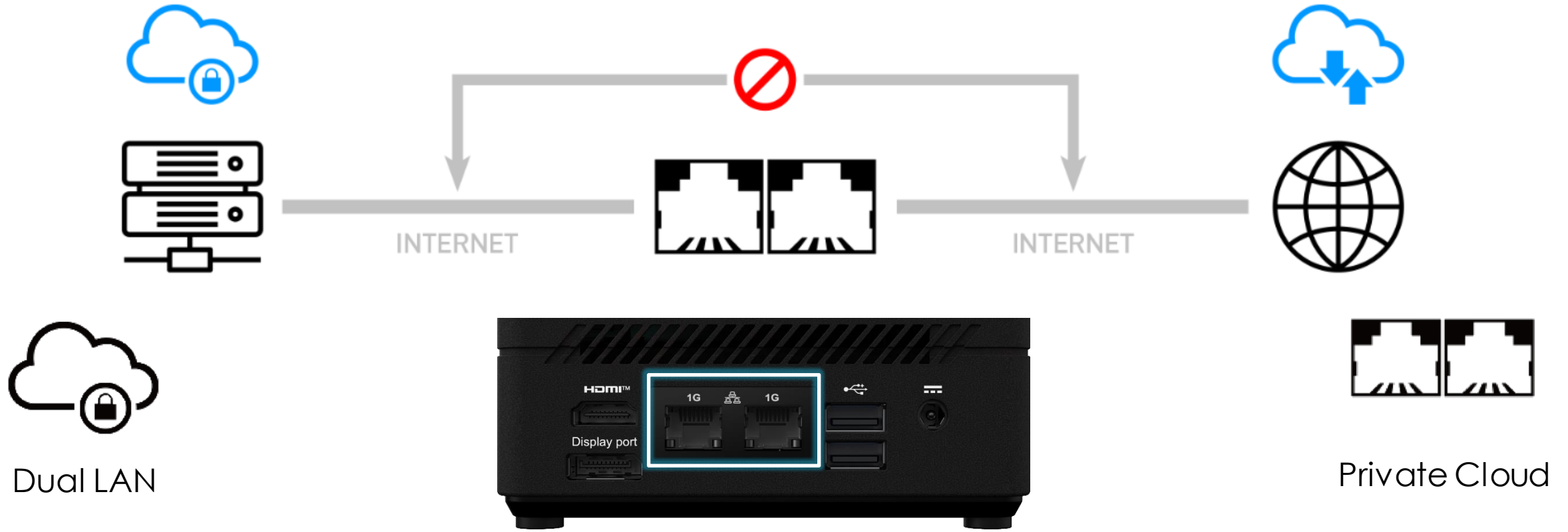


DP



Type-C

Dual LAN & 2.5G LAN



More than Dual LAN, the best way to secure your data and prevent the hacker (with MSI exclusive BIOS). With the Dual LAN Design, the Cubi Series will always be your backup if one of the internet was down and can also support the Internet/Intranet dual network environments.



MSI Cloud Center

Fast, Secure & Wireless Backup

Fast, secure, and wireless backup & download between your PC and mobile devices. Transfer files, photos, videos, and more between your PC, Android, and iOS device faster and easier than a cabled connection. You can make these files accessible to your family or team members or make files as private as you want. The decision is in your hands.

MSI Cloud Center



HW TPM 2.0 Support

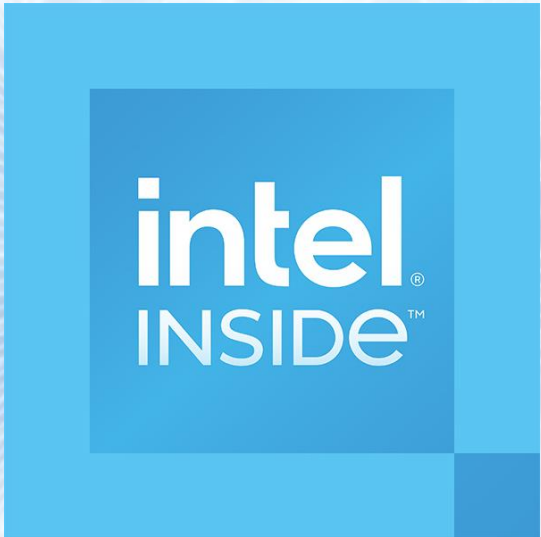
msi



TPM Support

dTPM 2.0 (Trusted Platform Module) technology is designed to provide hardware-based, security-related functions. You can store your sensitive data & passwords by encryption keys for advanced security.

Efficient and Stable: Cubi N, the Energy-Saving Solution



Up to
Intel® Alder Lake
N200 Processor

Up to
16GB
DDR4 3200MHz

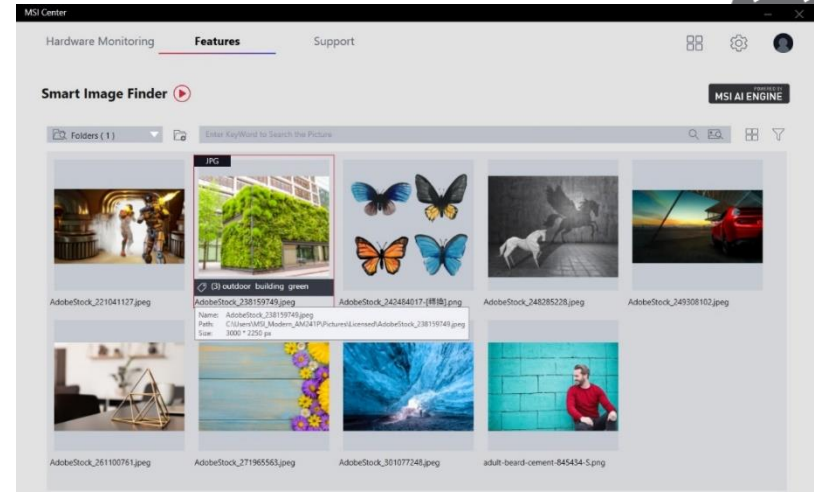
Support
Windows 11 Pro

A made-to-measure Cubi N mini desktop equipping Intel® Alder Lake N200 processor (Alder Lake) with built-in UHD Graphics, 4 cores, and 4 threads save more power and energy source while satisfying your usage requirements with only 6W TDP.

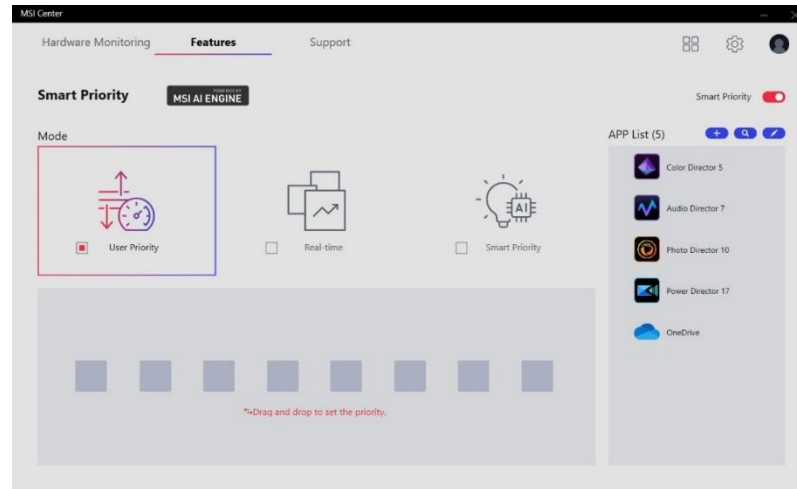


MSI Center

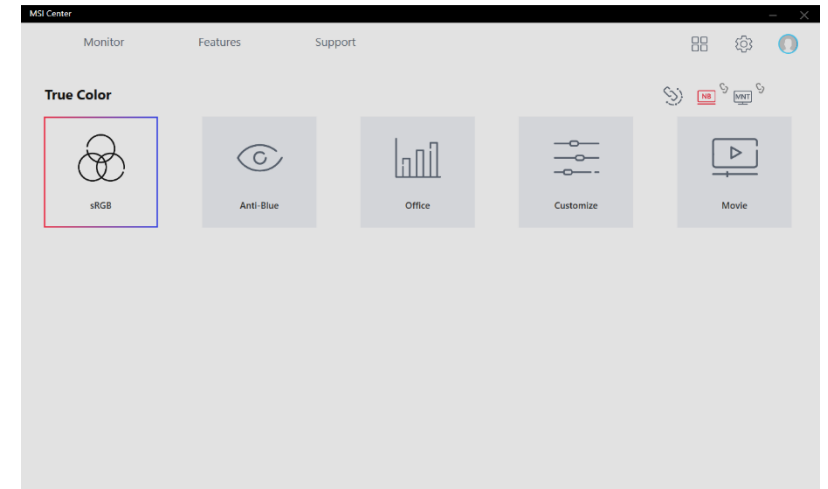
The MSI Center takes optimization to the next level with customizable UI that avoid unnecessary workload for your system and easily adjustable system modes; it helps to prioritize & allocate the resource on your hand and accelerate the performance of those software which you work with every day.



Easily organize and find your pictures with Smart Image Finder



Prioritize your work with Smart Priority



Setup your monitor color for different use

*Features blocked(will not show on UI): User Scenario/ Game Highlights/ Mystic Light/ Ambient Link/ Duet Display

*The interface and functionality may differ due to version change. Please download the latest MSI Center APP through Microsoft Store.

USB 3.2 Gen 2 Type C & Type A



With data transfer speeds up to 10Gbps, one USB 3.2 Gen 2 Type-C and two Type-A ports in the front I/O offer twice the bandwidth of the older USB 3.1 Gen 1 ports, effectively halving any data delay or waiting time.

Type C offers a universal solution for connecting devices with high-speed data transfer, display capabilities, and charging functionality.

Easy Maintenance

Users can easily upgrade SO-DIMM, one M.2 SSD or one 2.5" HDD/SSD by disassembling the cover. Made Cubi N an even flexible desktop and also reduce the time wasting on upgrading.



SPEC varies by model.

VESA Mount Support

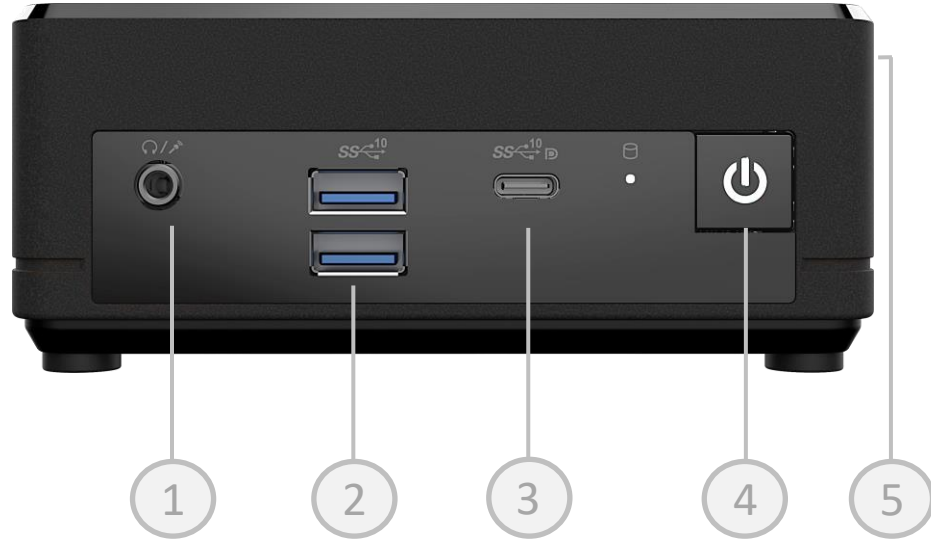
msi



VESA Mountable design allows users to hook Cubi N up anywhere you like. Not only improve the flexibility of using Cubi N, but also let users make good use of their space at home or at office.

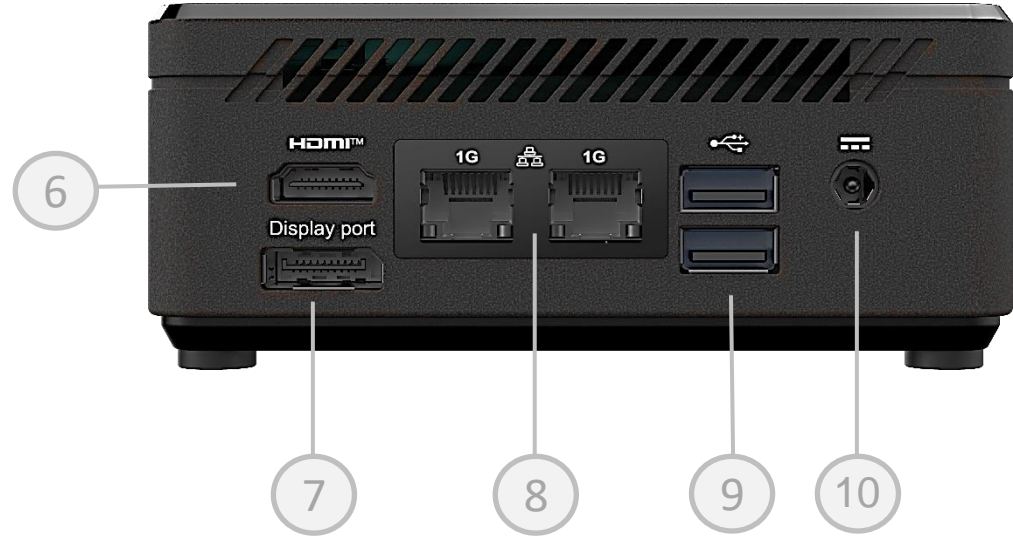


I/O Connection



Front:

1. 1x Mic-in / Headphone-out combo
2. 2x USB 3.2 Gen 2 Type A
3. 1x USB 3.2 Gen 2 Type-C (DP Alt.)
4. Power Button
5. Kensington Lock



Rear:

6. 1x HDMI-out (2.1)
7. 1x DP-out (1.4)
8. 2x RJ45 (LAN)
9. 2x USB 2.0 Type A
10. DC Jack



Specification

msi

Processor	Intel® Processor N200 / Intel® Processor N100
Operating System	Windows 11 Pro
Chip Set	Intel SoC
Graphic	Intel UHD Graphics
Memory	1x 16GB DDR4 3200MHz SO-DIMMs
SSD / HDD	1x 128GB M.2 SSD Optional 1x 2.5" HDD/SSD
Wireless	Intel Wireless AC 3168 or Intel Wireless AC 9462
Bluetooth	4.2 (for AC 3168) / 5.1 (for AC 9462)
I/O	Front: 2x USB 3.2 Gen 2 Type A, 1x USB 3.2 Gen 2 (USB Type-C), 1x Mic-in / Headphone-out combo Rear: 2x USB 2.0 Type A, 2x RJ45, 1x DP out(1.4), 1x HDMI out (2.1)
Wall Mount	Support standard 75x75 & 100x100 VESA Wall Mount
External Power Switch	Optional
Dimension (W x D x H)	124 x 124 x 53.7 mm / 4.88 x 4.88 x 2.11 inch
Weight (N.W./ G.W.)	0.55 kg / 1.4 kg ; 1.21 lbs / 3.09 lbs
Volume	0.66 liters / 1.39 pints
Power	65W



Industry



Retail



Hospitality



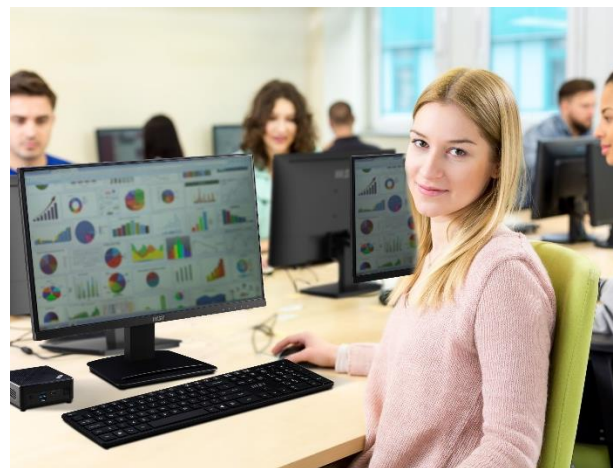
Transportation



Enterprise



Education



Factory



Successful & Stylish B2B projects

Over the past years, MSI has successfully supported Countless of commercial projects, including government tenders, restaurant & hotel facilitation, shopping mall navigation projects, school & university developments and professional office projects.

Find more details about many of these projects on:

<https://www.msi.com/pro-projects/global>

