



Test Report

Applicant's name: Shenzhen Yongjiu Precision Electronics Co.,Ltd.
Address.....: 7/F, Sunjet Industrial Park, No.5 - 1,Dawangshan Industrial Rd 2nd, Shajing, Bao'an, Shenzhen, 518104, China
Manufacturer: Shenzhen Yongjiu Precision Electronics Co.,Ltd.
Address.....: 7/F, Sunjet Industrial Park, No.5 - 1,Dawangshan Industrial Rd 2nd, Shajing, Bao'an, Shenzhen, 518104, China
Trade Mark.....: N/A
Test item description: Wall Charger
Model/Type reference.....: YJ-N33, OPP142, OPP152, OPP062
Date of receipt of test item.....: Feb. 21, 2023
Date(s) of performance of tests.....: Feb. 21, 2023 - Feb. 27, 2023
Date of report.....: Feb. 27, 2023

Test Requested:

1. As specified by client ,to screen Lead(Pb),Cadmium(Cd),Mercury(Hg), Chromium(Cr)and Bromine(Br)in the submitted sample(s)by XRF.
2. As specified by client ,when screening results exceed the XRF screening limit in IEC62321:2013 Edition 1.0,further use of wet chemical methods are required to test Lead(Pb),Cadmium(Cd),Mercury(Hg),Hexavalent Chromium(Cr(VI)),Polybrominated Biphenyls(PBBs),Polybrominated Diphenyl Ethers(PBDEs),Polybrominated diphenyl ethers (PBDEs) and Phthalates such as Bis(2-ethylhexyl) phthalate (DEHP) ,Butyl benzyl phthalate (BBP), Dibutylphthalate (DBP) ,and Diisobutyl phthalate (DIBP) in the submitted sample(s).

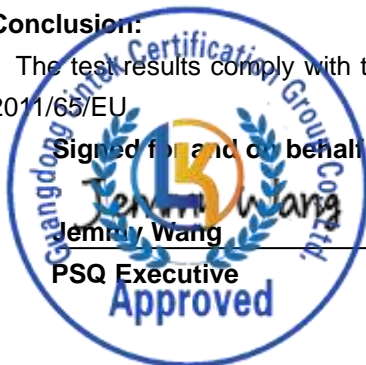
Test Results: Pass

Conclusion:

The test results comply with the limits of RoHS 2.0 Directive (EU) 2015/863 amending Annex II to Directive 2011/65/EU

Signed for and on behalf of Lintek.

Jemmy Wang
 Jemmy Wang
 PSQ Executive
 Approved





Test Report

No.	Sample Description	Test item	XRF Result	ChemicalTest (mg/kg)	Conclusion
1	Plastic enclosure	Pb	BL	--	Pass
		Cd	BL	--	
		Hg	BL	--	
		Cr(Cr(VI))	BL	--	
		Br(PBBs&PBDEs)	BL	--	
		Phthalate(DBP\BBP\DEHP\DIBP)	--	N.D.	
2	Plastic on plug	Pb	BL	--	Pass
		Cd	BL	--	
		Hg	BL	--	
		Cr(Cr(VI))	BL	--	
		Br(PBBs&PBDEs)	BL	--	
		Phthalate(DBP\BBP\DEHP\DIBP)	--	N.D.	
3	Metal of plug	Pb	BL	--	Pass
		Cd	BL	--	
		Hg	BL	--	
		Cr(Cr(VI))	BL	--	
		Br(PBBs&PBDEs)	N.D.	--	
		Phthalate(DBP\BBP\DEHP\DIBP)	--	N.D.	
4	Metal of wire	Pb	BL	--	Pass
		Cd	BL	--	
		Hg	BL	--	
		Cr(Cr(VI))	BL	--	
		Br(PBBs&PBDEs)	N.D.	--	
		Phthalate(DBP\BBP\DEHP\DIBP)	--	N.D.	

This Test Report is issued by the Company subject to its General Conditions of Service printed overleaf. Attention is drawn to the limitations of liability, indemnification and jurisdictional policies defined therein. The results shown in this test report refer only to the sample(s) tested unless otherwise stated and the sample(s) are retained for 30 days only. This Test Report cannot be reproduced, except in full, without prior written permission of the Company.



Test Report

5	Plastic of wire	Pb	BL	--	Pass
		Cd	BL	--	
		Hg	BL	--	
		Cr(Cr(VI))	BL	--	
		Br(PBBs&PBDEs)	BL	--	
		Phthalate(DBP\BBP \DEHP\DIBP)	--	N.D.	
6	Tape of transformer	Pb	BL	--	Pass
		Cd	BL	--	
		Hg	BL	--	
		Cr(Cr(VI))	BL	--	
		Br(PBBs&PBDEs)	BL	--	
		Phthalate(DBP\BBP \DEHP\DIBP)	--	N.D.	
7	Wire of transformer	Pb	BL	--	Pass
		Cd	BL	--	
		Hg	BL	--	
		Cr(Cr(VI))	BL	--	
		Br(PBBs&PBDEs)	BL	--	
		Phthalate(DBP\BBP \DEHP\DIBP)	--	N.D.	
8	Core of transformer	Pb	BL	--	Pass
		Cd	BL	--	
		Hg	BL	--	
		Cr(Cr(VI))	BL	--	
		Br(PBBs&PBDEs)	BL	--	
		Phthalate(DBP\BBP \DEHP\DIBP)	--	N.D.	

This Test Report is issued by the Company subject to its General Conditions of Service printed overleaf. Attention is drawn to the limitations of liability, indemnification and jurisdictional policies defined therein. The results shown in this test report refer only to the sample(s) tested unless otherwise stated and the sample(s) are retained for 30 days only. This Test Report cannot be reproduced, except in full, without prior written permission of the Company.



Test Report

9	Metal pin of transformer	Pb	BL	--	Pass
		Cd	BL	--	
		Hg	BL	--	
		Cr(Cr(VI))	BL	--	
		Br(PBBs&PBDEs)	BL	--	
		Phthalate(DBP\BBP \DEHP\DIBP)	--	N.D.	
10	Metal wire of transformer	Pb	BL	--	Pass
		Cd	BL	--	
		Hg	BL	--	
		Cr(Cr(VI))	BL	--	
		Br(PBBs&PBDEs)	N.D.	--	
		Phthalate(DBP\BBP \DEHP\DIBP)	--	N.D.	
11	Bobbin of transformer	Pb	BL	--	Pass
		Cd	BL	--	
		Hg	BL	--	
		Cr(Cr(VI))	BL	--	
		Br(PBBs&PBDEs)	BL	--	
		Phthalate(DBP\BBP \DEHP\DIBP)	--	N.D.	
12	Capacitance	Pb	BL	--	Pass
		Cd	BL	--	
		Hg	BL	--	
		Cr(Cr(VI))	BL	--	
		Br(PBBs&PBDEs)	BL	--	
		Phthalate(DBP\BBP \DEHP\DIBP)	--	N.D.	

This Test Report is issued by the Company subject to its General Conditions of Service printed overleaf. Attention is drawn to the limitations of liability, indemnification and jurisdictional policies defined therein. The results shown in this test report refer only to the sample(s) tested unless otherwise stated and the sample(s) are retained for 30 days only. This Test Report cannot be reproduced, except in full, without prior written permission of the Company.



Test Report

13	PCB	Pb	BL	--	Pass
		Cd	BL	--	
		Hg	BL	--	
		Cr(Cr(VI))	BL	--	
		Br(PBBs&PBDEs)	BL	--	
		Phthalate(DBP\BBP \DEHP\DIBP)	--	N.D.	
14	Fuse	Pb	BL	--	Pass
		Cd	BL	--	
		Hg	BL	--	
		Cr(Cr(VI))	BL	--	
		Br(PBBs&PBDEs)	BL	--	
		Phthalate(DBP\BBP \DEHP\DIBP)	--	N.D.	
15	Metal of terminal	Pb	BL	--	Pass
		Cd	BL	--	
		Hg	BL	--	
		Cr(Cr(VI))	BL	--	
		Br(PBBs&PBDEs)	N.D.	--	
		Phthalate(DBP\BBP \DEHP\DIBP)	--	N.D.	
16	Plastic of terminal	Pb	BL	--	Pass
		Cd	BL	--	
		Hg	BL	--	
		Cr(Cr(VI))	BL	--	
		Br(PBBs&PBDEs)	BL	--	
		Phthalate(DBP\BBP \DEHP\DIBP)	--	N.D.	

This Test Report is issued by the Company subject to its General Conditions of Service printed overleaf. Attention is drawn to the limitations of liability, indemnification and jurisdictional policies defined therein. The results shown in this test report refer only to the sample(s) tested unless otherwise stated and the sample(s) are retained for 30 days only. This Test Report cannot be reproduced, except in full, without prior written permission of the Company.



Test Report

17	Solder tin	Pb	BL	--	Pass
		Cd	BL	--	
		Hg	BL	--	
		Cr(Cr(VI))	BL	--	
		Br(PBBs&PBDEs)	BL	--	
		Phthalate(DBP\BBP \DEHP\DIBP)	--	N.D.	
18	Chip	Pb	BL	--	Pass
		Cd	BL	--	
		Hg	BL	--	
		Cr(Cr(VI))	BL	--	
		Br(PBBs&PBDEs)	BL	--	
		Phthalate(DBP\BBP \DEHP\DIBP)	--	N.D.	
19	Wire of Inductance	Pb	BL	--	Pass
		Cd	BL	--	
		Hg	BL	--	
		Cr(Cr(VI))	BL	--	
		Br(PBBs&PBDEs)	BL	--	
		Phthalate(DBP\BBP \DEHP\DIBP)	--	N.D.	
20	Core of Inductance	Pb	BL	--	Pass
		Cd	BL	--	
		Hg	BL	--	
		Cr(Cr(VI))	BL	--	
		Br(PBBs&PBDEs)	BL	--	
		Phthalate(DBP\BBP \DEHP\DIBP)	--	N.D.	

This Test Report is issued by the Company subject to its General Conditions of Service printed overleaf. Attention is drawn to the limitations of liability, indemnification and jurisdictional policies defined therein. The results shown in this test report refer only to the sample(s) tested unless otherwise stated and the sample(s) are retained for 30 days only. This Test Report cannot be reproduced, except in full, without prior written permission of the Company.



Test Report

21	Internal plastic	Pb	BL	--	Pass
		Cd	BL	--	
		Hg	BL	--	
		Cr(Cr(VI))	BL	--	
		Br(PBBs&PBDEs)	BL	--	
		Phthalate(DBP\BBP \DEHP\DIBP)	--	N.D.	

1. It is the result on total Br while test item on restricted substances in PBBs/PBDEs. It is the result on total Cr while test item on restricted substances is Cr(VI).
2. Screening test by XRF spectroscopy XRF screening limits in mg/kg for regulated elements according to IEC62321:2013 Ed.1 Sec.6 & Annex D.

Element	Polymer Material	Metallic Material	Composite Material
Pb	$BL \leq 700 - 3\sigma \leq X < 1300 + 3\sigma$ $\leq OL$	$BL \leq 700 - 3\sigma \leq X < 1300 + 3\sigma$ $\leq OL$	$BL \leq 500 - 3\sigma \leq X < 1500 + 3\sigma$ $\leq OL$
Cd	$BL \leq 70 - 3\sigma \leq X < 130 + 3\sigma$ $\leq OL$	$BL \leq 70 - 3\sigma \leq X < 130 + 3\sigma$ $\leq OL$	$LOD < X < 150 + 3\sigma \leq OL$
Hg	$BL \leq 700 - 3\sigma \leq X < 1300 + 3\sigma$ $\leq OL$	$BL \leq 700 - 3\sigma \leq X < 1300 + 3\sigma$ $\leq OL$	$BL \leq 500 - 3\sigma \leq X < 1500 + 3\sigma$ $\leq OL$
Cr	$BL \leq 700 - 3\sigma < X$	$BL \leq 700 - 3\sigma < X$	$BL \leq 500 - 3\sigma < X$
Br	$BL \leq 300 - 3\sigma < X$	--	$BL \leq 250 - 3\sigma < X$

XRF detection limits in mg/kg for regulated elements in various material

Element	Polymer Material	Metallic Material	Composite Material
Pb	10	50	50
Cd	10	50	50
Hg	10	50	50
Cr	10	50	50
Br	10	50	50

This Test Report is issued by the Company subject to its General Conditions of Service printed overleaf. Attention is drawn to the limitations of liability, indemnification and jurisdictional policies defined therein. The results shown in this test report refer only to the sample(s) tested unless otherwise stated and the sample(s) are retained for 30 days only. This Test Report cannot be reproduced, except in full, without prior written permission of the Company.



Test Report

- Note :**
- BL = Under the XRF screening limit
 - OL = Future chemical test will be conducted while result is above the screening limit
 - X =The symbol"X"marks the region where further investigation in necessary
 - 3 σ =The reproducibility of analytical instruments
 - LOD=Detection limit

3. Wet chemical test

Test Item(s)	Test Method	Test Equipment	MDL
Pb	IEC62321-5:2013	ICP-AES	2
Cd	IEC62321-5:2013	ICP-AES	2
Hg	IEC62321-4:2013	ICP-AES	2
Cr(VI)	IEC62321-7-1:2015 IEC62321-7-2:2017	UV-Vis	2
PBB	IEC62321-6:2015	GC-MS	5
PBDE	IEC62321-6:2015	GC-MS	5
Dibutyl Phthalate(DBP)	IEC62321-8:2017	GC-MS	30
Benzylbutyl Phthalate (BBP)	IEC62321-8:2017	GC-MS	30
Di-(2-ethylhexyl) Phthalate(DEHP)	IEC62321-8:2017	GC-MS	30
Diisobutylhthalate (DIBP)	IEC62321-8:2017	GC-MS	30

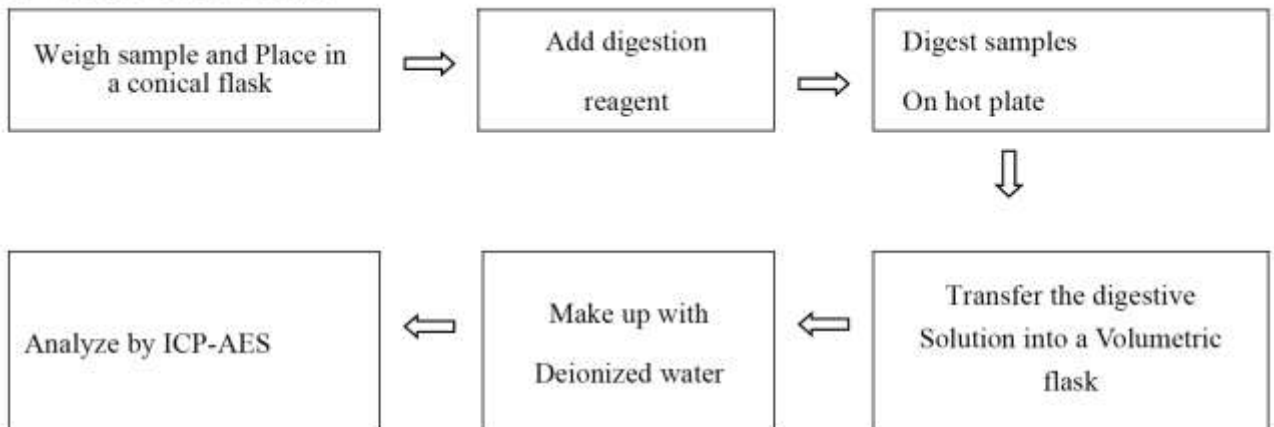
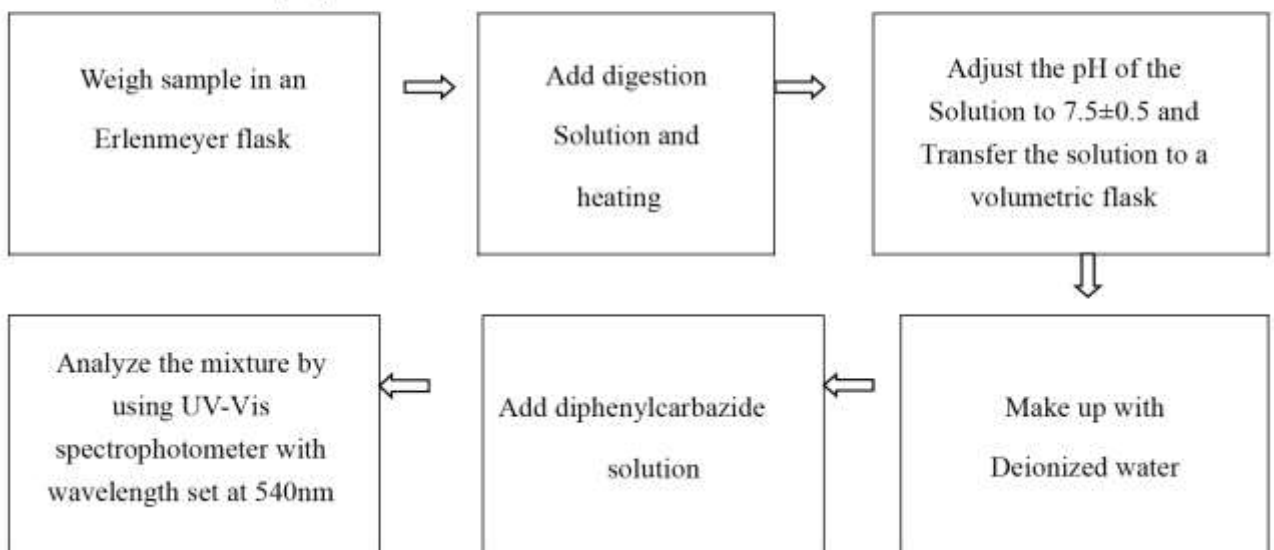
- Note :**
- mg/kg= ppm=0.0001%
 - ND=Not Detected(<MDL)
 - MDL = Method Detection Limit
 - = No Testing
 - Negative = Absence of Cr(VI), the detected Cr(VI) concentration in the boiling water extraction solution is less than 0.02 mg/kg with 50cm² sample surface
 - *=According to 2011/65/EU Annex,point 6-Lead as an alloying element is steel

This Test Report is issued by the Company subject to its General Conditions of Service printed overleaf. Attention is drawn to the limitations of liability, indemnification and jurisdictional policies defined therein. The results shown in this test report refer only to the sample(s) tested unless otherwise stated and the sample(s) are retained for 30 days only. This Test Report cannot be reproduced, except in full, without prior written permission of the Company.



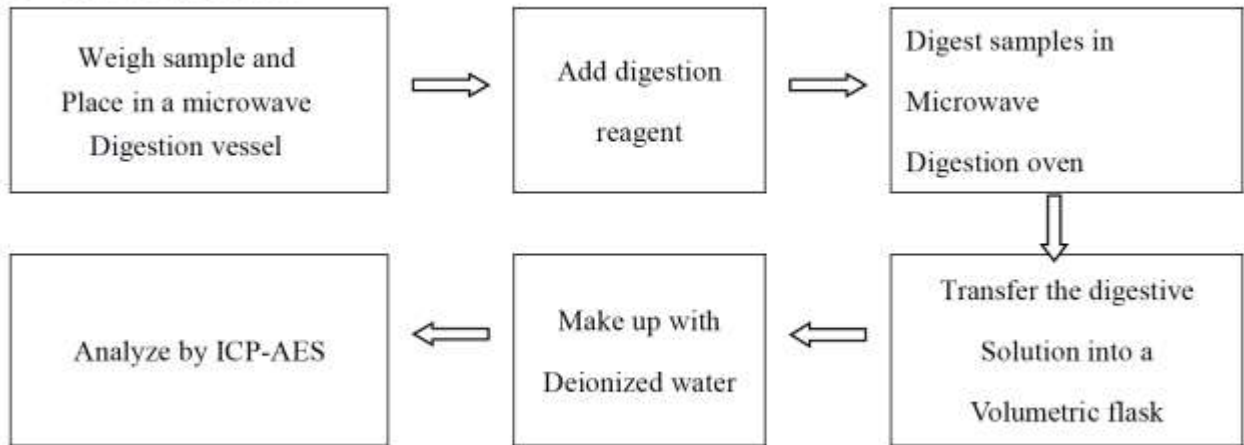
Test Report

containing up to 0.35% lead by weight, aluminum containing up to 0.4% lead by weight and as a copper alloy, containing up to 4% lead by weight can be exempted.

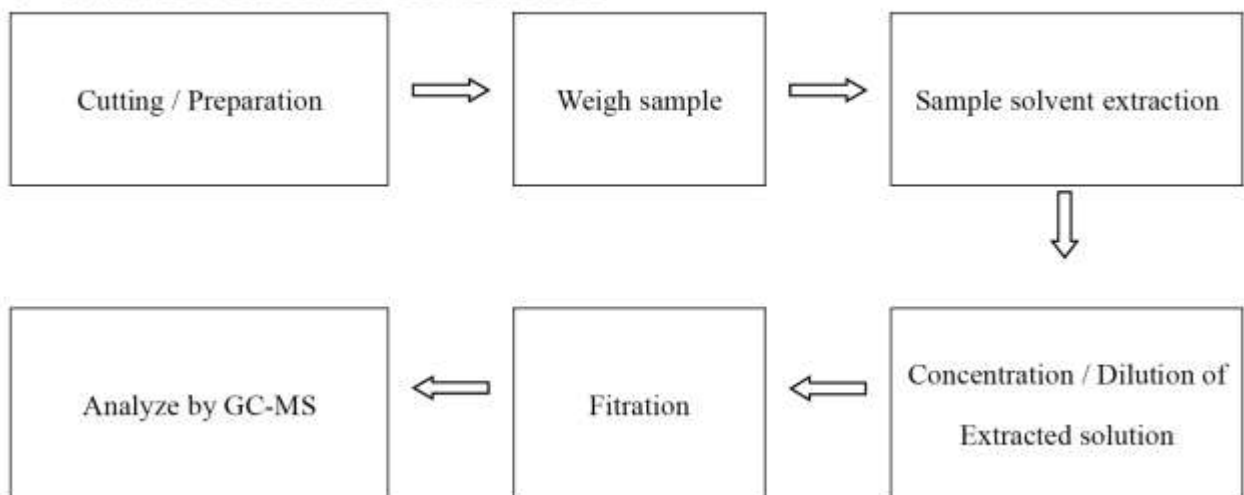
**Test Process:****1. Test for Cd/Pb Content****2. Test for Chromium(VI)Content**



3. Test for Hg Contents



4. Test for PBBs/PBDES/DBP/BBP/DEHP/DIBP





Photograph of Sample:



Fig.1

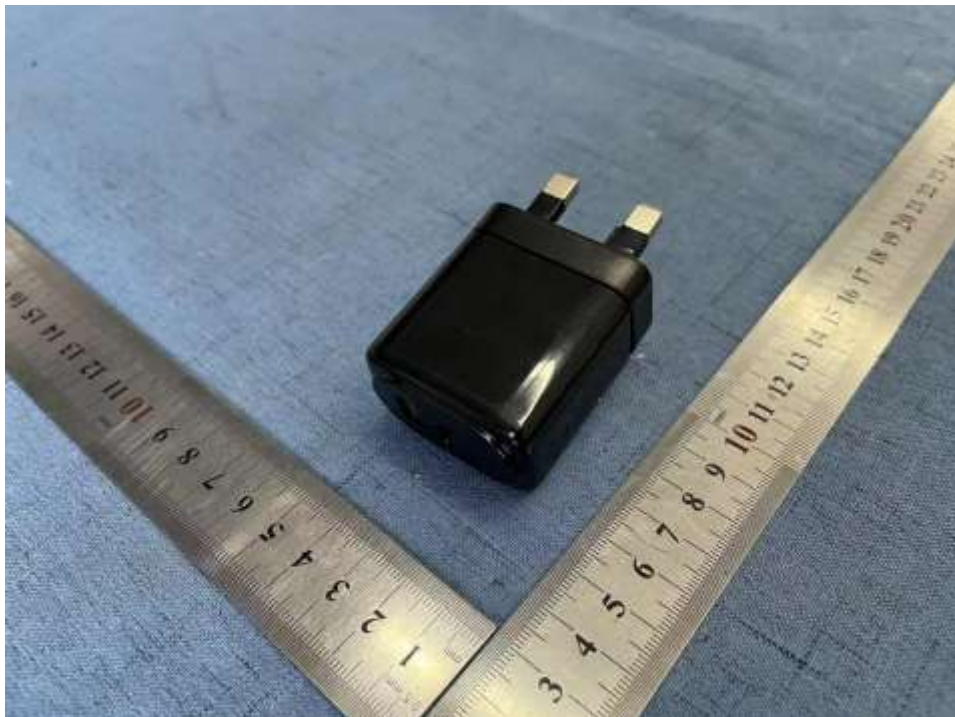


Fig.2

This Test Report is issued by the Company subject to its General Conditions of Service printed overleaf. Attention is drawn to the limitations of liability, indemnification and jurisdictional policies defined therein. The results shown in this test report refer only to the sample(s) tested unless otherwise stated and the sample(s) are retained for 30 days only. This Test Report cannot be reproduced, except in full, without prior written permission of the Company.

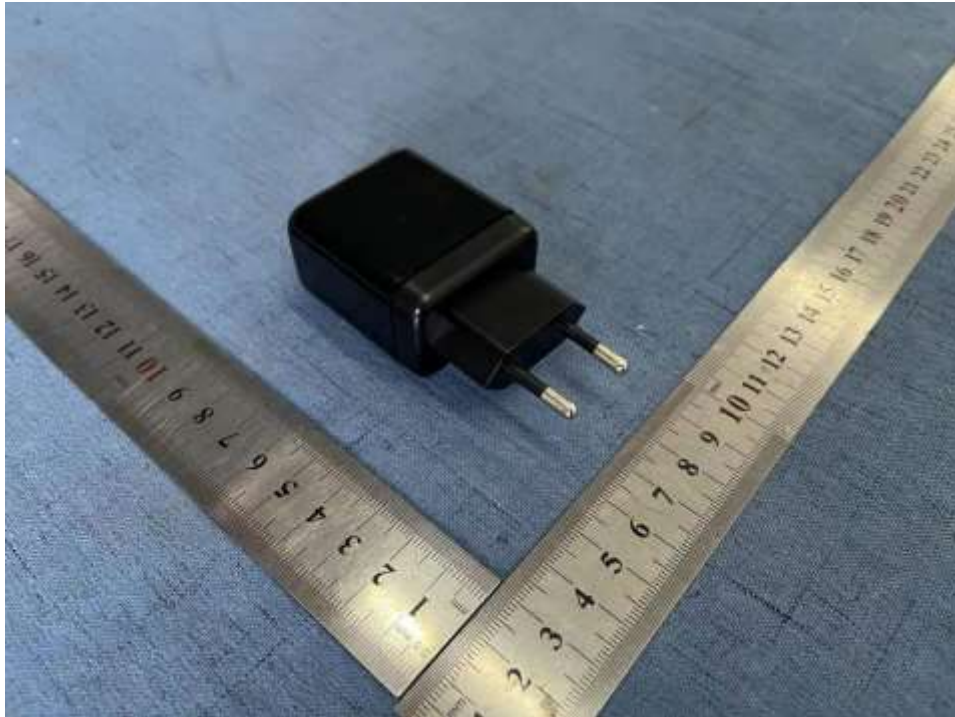


Fig.3

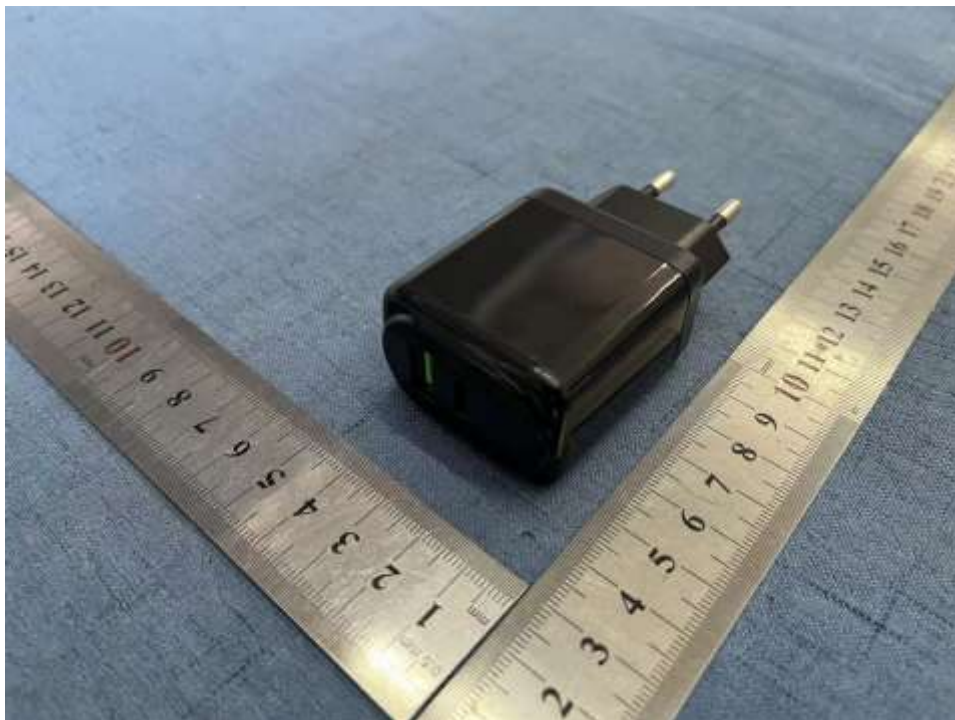


Fig.4

This Test Report is issued by the Company subject to its General Conditions of Service printed overleaf. Attention is drawn to the limitations of liability, indemnification and jurisdictional policies defined therein. The results shown in this test report refer only to the sample(s) tested unless otherwise stated and the sample(s) are retained for 30 days only. This Test Report cannot be reproduced, except in full, without prior written permission of the Company.



Fig.5

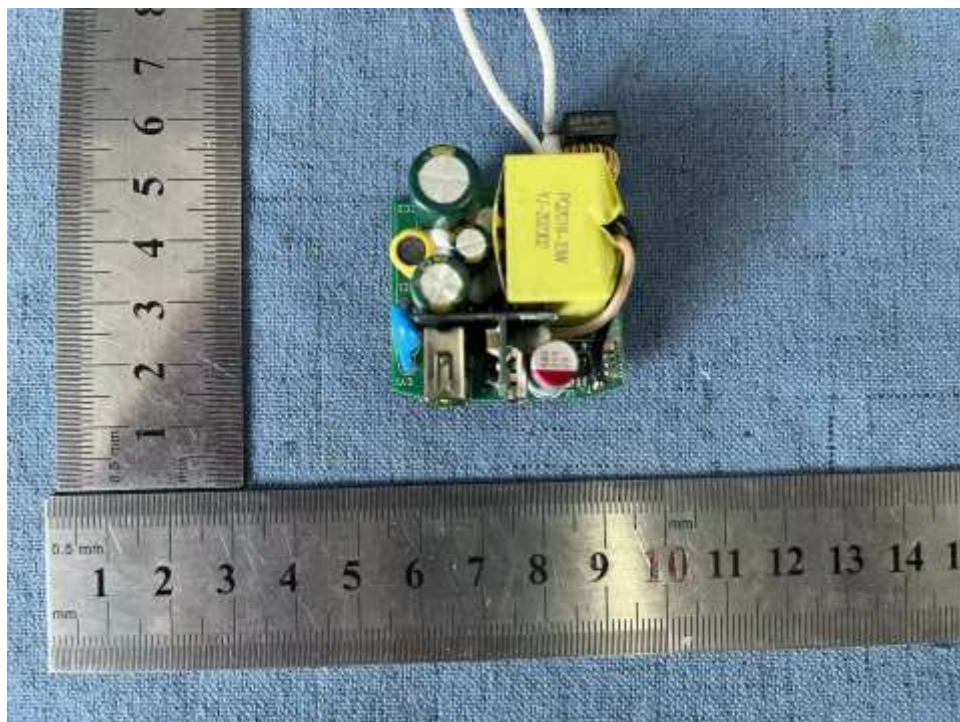


Fig.6

This Test Report is issued by the Company subject to its General Conditions of Service printed overleaf. Attention is drawn to the limitations of liability, indemnification and jurisdictional policies defined therein. The results shown in this test report refer only to the sample(s) tested unless otherwise stated and the sample(s) are retained for 30 days only. This Test Report cannot be reproduced, except in full, without prior written permission of the Company.

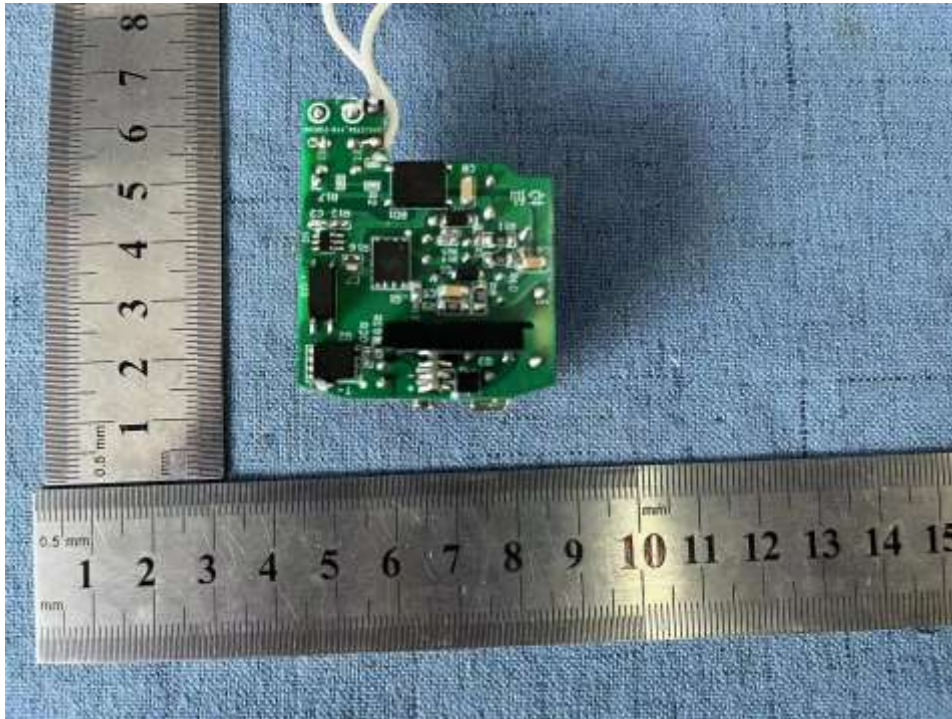


Fig.7

*****End of Report *****