

Zhongshan LCS Compliance Testing Laboratory Ltd.

Add:Y1403, 14th floor, one of the 15 east xinxing avenue, guzhen town, zhongshan city,  
guangdong province

Tel: (86) 0760-85323817 Fax: (86) 0760-85282906

Report No.: LCSD063022002R

# TEST REPORT

Applicant : Shenzhen Yale Electronics Co., Ltd  
Address : 4th Floor, Building No.2, Yujingtai Industrial Park, Huaxing Road, Dalang,  
Longhua New District, Shenzhen, China

## Report on the submitted samples said to be:

Sample Name : Bluetooth headset  
Trade Mark : AWEI  
Style/ Item No. : T1 Pro, T50, T51, T52, T52 Pro, T53, T58, T60, T66, T65, T67, T68, T69,  
T70, T26 Pro, T13 Pro, T13, T15, T15P, T16, T28 Pro, T29 Pro, T29 ANC,  
T28, T28P, T29, T29P, T12, T12P, T12S, T11, T11P, T23, T35, T36, T55, T25  
Manufacturer : Shenzhen Yale Electronics Co., Ltd  
Address : 4th Floor, Building No.2, Yujingtai Industrial Park, Huaxing Road, Dalang,  
Longhua New District, Shenzhen, China  
Sample Receiving Date : July 21, 2022  
Testing Period : July 21, 2022 ~ July 28, 2022  
Results : Please refer to next page(s).  
Based on the performed tests on submitted sample(s), the results of Lead,  
Mercury, Cadmium, Hexavalent chromium, Polybrominated biphenyls(PBBS),  
Polybrominated diphenyl ethers(PBDEs) and phthalates such as bis  
Conclusion : (2-ethylhexyl) phthalate(DEHP), Butyl benzyl phthalate(BBP),  
(3-Dibutyl phthalate(DBP), and diisobutyl phthalate(DIBP) comply with the  
limits as set by ROHS Directive (EU)2015/863 amending Annex II to Directive  
2011/65/EU.

Signed for and on behalf of LCS

Written By: Tenny.Wang  
Tenny.Wang

Approved by: Cat Zhang  
Cat Zhang

The Test Report is issued by the Company subject to its General Conditions of Service printed overleaf. Attention is drawn to the limitations of liability, indemnification and jurisdictional issues defined therein. The results shown in this test report refer only to the sample(s) tested unless otherwise stated. This Test Report cannot be reproduced, except in full, without prior written permission of the Company.

## 1. LISTS

No.	Part Name	Report No.
1	Black plastic shell	LCS211212030AR
2	Silver metal shell	LCS211212060AR
3	Silver metal screw	LCS211212061AR
4	Red line skin	LCS211212041AR
5	Black line skin	LCS211212043AR
6	Silver metal wire	LCS211212069AR
7	Black plastic (Speaker)	LCS211212048AR
8	Copper line(Speaker)	LCS211212073AR
9	Silvery metal(Speaker)	LCS211212072AR
10	Transparent plastic(Speaker)	LCS211212049AR
11	PCB(Speaker)	LCS211212031AR
12	Solder(Speaker)	LCS211212074AR
13	Silvery metal(USB)	LCS211212071AR
14	Black plastic(USB)	LCS211212058AR
15	Golden metal(USB)	LCS211212070AR
16	Black plastic case(Capacitance)	LCS211212037AR
17	Silvery metal case(Capacitance)	LCS211212067AR
18	Black plastic(Capacitance)	LCS211212039AR

## 2. TEST DATA SUMMAR

Test items	Lead (Pb)	Cadmium (Cd)	Mercury (Hg)	Hexavalent Chromium Cr(VI)	PBBs	PBDEs	BBP	DBP	DEHP	DIBP
Unit	ppm	ppm	ppm	ppm	ppm	ppm	ppm	ppm	ppm	ppm
1	N.D.	N.D.	N.D.	N.D.	N.D.	N.D.	N.D.	N.D.	N.D.	N.D.
2	N.D.	N.D.	N.D.	N.D.	N.D.	N.D.	N.D.	N.D.	N.D.	N.D.

3	N.D.	N.D.	N.D.	N.D.	N.D.	N.D.	N.D.	N.D.	N.D.	N.D.
4	N.D.	N.D.	N.D.	N.D.	N.D.	N.D.	N.D.	N.D.	N.D.	N.D.
5	N.D.	N.D.	N.D.	N.D.	N.D.	N.D.	N.D.	N.D.	N.D.	N.D.
6	N.D.	N.D.	N.D.	N.D.	N.D.	N.D.	N.D.	N.D.	N.D.	N.D.
7	N.D.	N.D.	N.D.	N.D.	N.D.	N.D.	N.D.	N.D.	N.D.	N.D.
8	N.D.	N.D.	N.D.	N.D.	N.D.	N.D.	N.D.	N.D.	N.D.	N.D.
9	N.D.	N.D.	N.D.	N.D.	N.D.	N.D.	N.D.	N.D.	N.D.	N.D.
10	N.D.	N.D.	N.D.	N.D.	N.D.	N.D.	N.D.	N.D.	N.D.	N.D.
11	N.D.	N.D.	N.D.	N.D.	N.D.	N.D.	N.D.	N.D.	N.D.	N.D.
12	N.D.	N.D.	N.D.	N.D.	N.D.	N.D.	N.D.	N.D.	N.D.	N.D.
13	N.D.	N.D.	N.D.	N.D.	N.D.	N.D.	N.D.	N.D.	N.D.	N.D.
14	N.D.	N.D.	N.D.	N.D.	N.D.	N.D.	N.D.	N.D.	N.D.	N.D.
15	N.D.	N.D.	N.D.	N.D.	N.D.	N.D.	N.D.	N.D.	N.D.	N.D.
16	N.D.	N.D.	N.D.	N.D.	N.D.	N.D.	N.D.	N.D.	N.D.	N.D.
17	N.D.	N.D.	N.D.	N.D.	N.D.	N.D.	N.D.	N.D.	N.D.	N.D.
18	N.D.	N.D.	N.D.	N.D.	N.D.	N.D.	N.D.	N.D.	N.D.	N.D.

Note:

- (1) N.D. = Not detected (<MDL)
- (2) ppm = mg/kg
- (3) N.A. = Not Analyzed
- (4) Negative = the concentration of Hexavalent Chromium extracted from 50cm<sup>2</sup> sample is less than the detection limit.

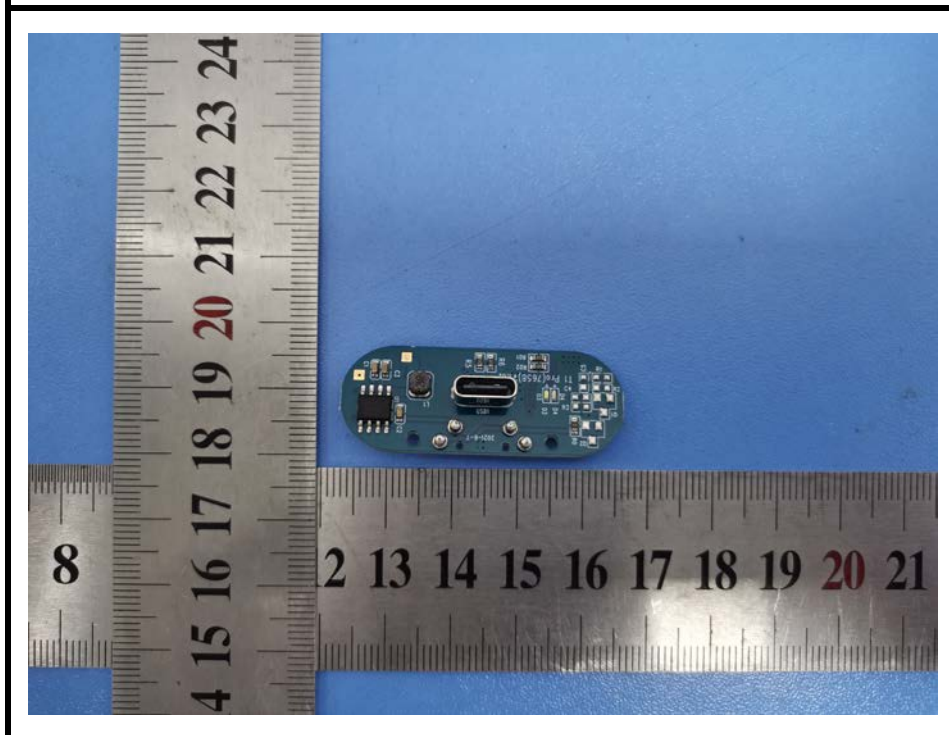
Remark: Lead in electronic components, which are exempted from (RoHS) the requirements.

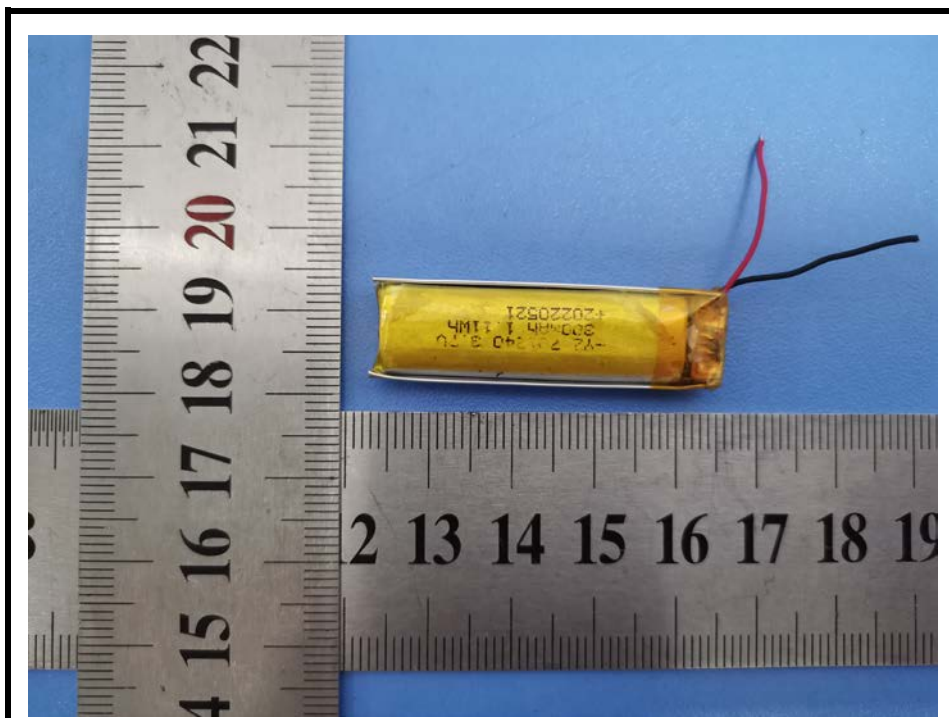
Disclaimer:

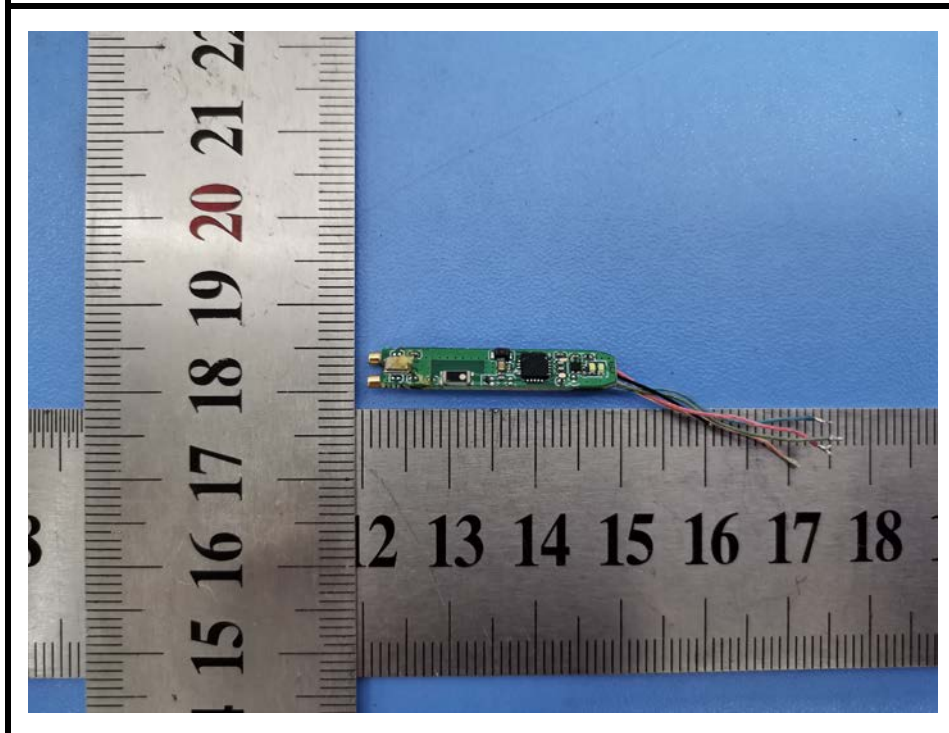
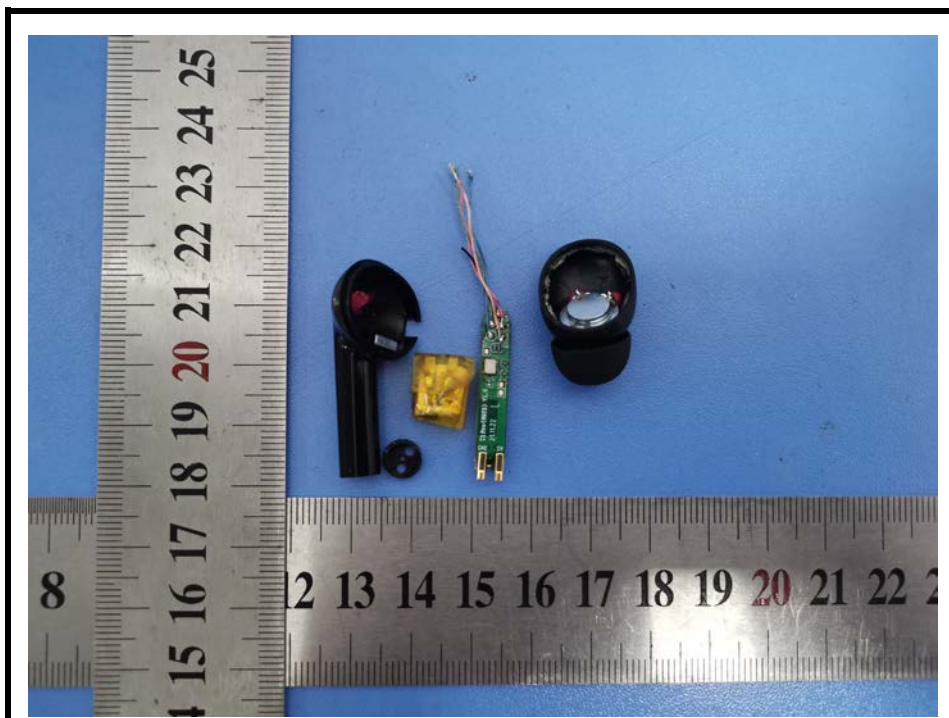
- The integration report is not equivalent to the test report.
- LCS does not shoulder responsibility for the authenticity of all the test data listed in integration report, which are submitted by the applicants.
- The applicants are responsible for all legal obligation caused by the inaccuracy and invalidity of the original report.
- If this disclaimer contradicts any other terms and conditions of LCS, this disclaimer will prevail.
- The above data are from customers.

### 3. PHOTOGRAPHS OF TEST SAMPLE







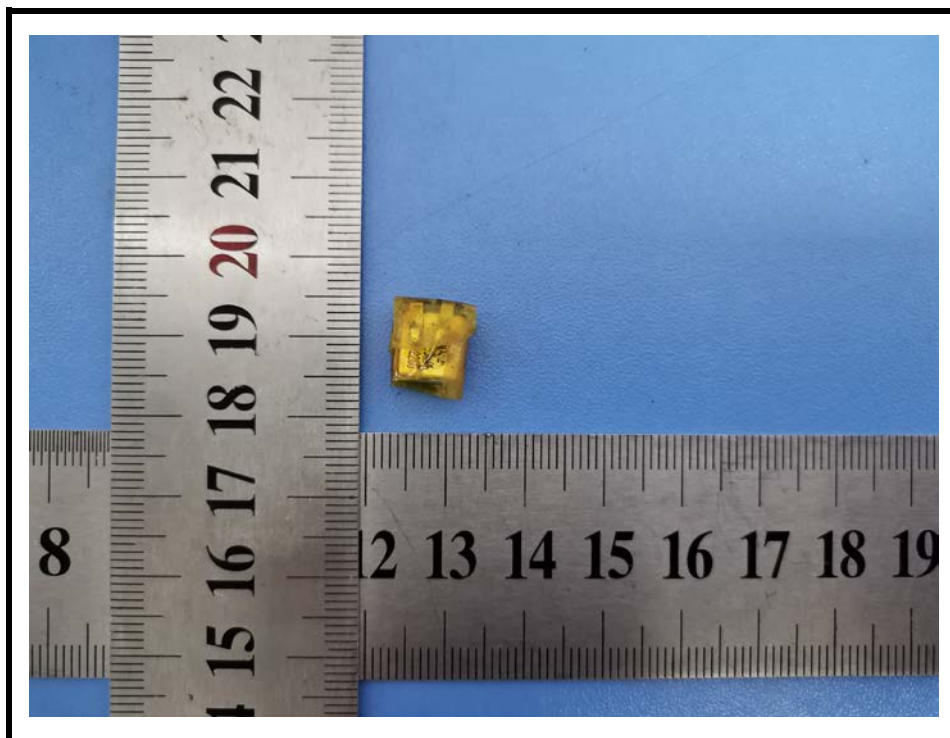


Zhongshan LCS Compliance Testing Laboratory Ltd.

Add: Y1403, 14th floor, one of the 15 east xinxing avenue, guzhen town, zhongshan city, guangdong province

Tel: (86) 0760-85323817 Fax: (86) 0760-85282906

Report No.: LCSD063022002R



LCS authenticate the photo on original report only  
End of Report

